

# GO TO CHURCH SERVICES SOMEWHERE EVERY SUNDAY

## Barberville Baptist Church

Rev. Paul Mull, Pastor  
**SUNDAY**—  
 9:45 a.m.—Sunday School. John Ruff, Superintendent.  
 11:00 a.m.—Morning Worship. Message by the pastor.  
 7:00 p.m.—Training Union. Jake Schulhofer, Director.  
 8:00 p.m.—Evening Worship. Message by the pastor.  
**Announcements and Activities**  
**FRIDAY**—Choir Practice at the church at 7:30 p.m.  
**TUESDAY**—Bible Study at the home of John Ruff on Boyd Avenue at 7:30 p.m.  
 YWA meets in Guylene Ledford's home at Hazelwood at 7:30 p.m.  
**WEDNESDAY**—  
 Mid-week prayer meeting at 7:00 p.m. at the church.  
 The Nursery is open each Sunday morning at 9:45 o'clock and for all other services of the church.

## Bethel Methodist

Dr. L. B. Hayes, Minister  
 "Bethel on the Pigeon"  
**GOD IS OUR STRENGTH**  
 ATTEND CHURCH EVERY WEEK  
 PRAY EVERY DAY

Church School at 10 o'clock. M. C. Nix is the general supt. There are classes for all age groups. You are invited to the group of your interest.  
 11:00—Morning worship. Layman's Day. J. H. Moore will be featured speaker. Mrs. James Reeves and J. Letcher Worley will be on morning program. Special music by choir directed by Miss Maud Worley.  
 7:00—Combined program of WSCS and MYF. Film on Indian Missions, 15 minute lecture by pastor.

## Clyde Church of God

THOMPSON COVE  
 The Rev. John Owens, Pastor  
**SUNDAY**—  
 Sunday School 10 a.m.  
 Morning Worship 11 a.m.  
 Evangelistic Service 7:30 p.m.  
 Young People's Service Friday, 7:30 p.m.

## Teachings on Stewardship

## ILLUSTRATED SUNDAY SCHOOL LESSON

By Alfred J. Buescher

Scripture—Luke 16:1-31; 19:11-27.



After listening to a parable of a steward who cheated his master, the Pharisees, who were covetous, mocked Him. Jesus told them that they might justify their evil deeds to men, but that God knew what was in their hearts.



A certain rich man was "clothed in purple and fine linen" and was fed sumptuously. At his gate lay a poor beggar whose body was full of sores. He waited to be fed from food left from the rich man's table.



A certain nobleman, said Jesus, went to a far country to receive a kingdom. Before leaving he called his ten servants to him and gave each of them one pound, telling them to use it for his benefit until he came again.



When he returned he asked the servants what each had done with the money. The first now had ten pounds, the second five, but the third gave back the pound which he had feared to lose.  
 MEMORY VERSE—Luke 16:10.

## Waynesville Presbyterian Church

The Rev. Calvin Thielman, Pastor  
 Robert Gibson, Jr., Supt. of Sunday School.  
 "Honor and Majesty are before the Lord; Strength and beauty are in His sanctuary."  
**SUNDAY**—  
 9:45 a.m.—Sunday School.  
 11:00 a.m.—Morning Worship. Sermon by Mr. C. M. Berry.  
 6:15 p.m.—Youth Fellowship.  
 7:30 p.m.—Evening Worship. Sermon by Mr. C. M. Berry.  
**WEDNESDAY**—  
 7:30 p.m.—Prayer Meeting. Continuing Bible study in Philipians. Bring your Bible and study with us.  
 Visitors are cordially welcome to attend these services.

## Red Bank Baptist Church

Rev. Joe Williams, Pastor  
**SUNDAY**—  
 10:00 a.m.—Sunday School. Garrett Hill, Supt.  
 11:00 a.m.—Morning Worship. Message by the pastor every 2nd and 4th Sunday.  
 7:00 p.m.—Training Union. John Trull, Director.  
 7:30 p.m.—Evening Worship. Message by the pastor every 2nd and 4th Sunday.  
 7:00 p.m.—The regular monthly singing the first Sunday in each month. Frank Smathers is in charge.  
 Visitors are welcome to worship with us in any of the services.

## First Baptist Church

WAYNESVILLE  
 The Rev. T. E. Robinson, Pastor  
**Come WORSHIP WITH US**  
 You will like the reverent spirit of the services... the friendly attitude of the people.  
**VISITORS ARE ALWAYS WELCOME**  
**SUNDAY**—  
 9:45—Sunday School, The Teaching Ministry. There is a place and a welcome here for those of all ages. Bring your family to Sunday School and join us in the study of God's Word. Mr. Glenn W. Brown is superintendent.  
 9:45 to 12:00—The Nursery is open.  
 11:00 to 12:00—Sunbeams meet.  
 11:00—Morning worship. Sermon, "Is Thy Heart Right?" by the pastor.  
 Music under the direction of Charles Isley.  
 6:15—The Training Union.  
 7:30—Evening worship. There will be a joint worship service of the First Baptist Church of Hazelwood and Waynesville. The Ordinance of baptism will be observed. Rev. John Kizer will bring the message.  
**MONDAY**—  
 2:45—Sunbeams meet at the church.  
 7:30—Intermediate G.A.'s meet at the parsonage.  
 7:30—Intermediate R.A.'s meet at the parsonage.  
**WEDNESDAY**—  
 7:30—Midweek Prayer Service. We will continue our studies in Ephesians using Ephesians 1:3-14. The message Wednesday evening will be "In Christ".  
 8:15—Youth and Senior Choir rehearsal.  
 8:15—Finance Committee meet in the pastor's study.

## First Baptist Church

HAZELWOOD, N. C.  
 The Rev. John Ivan Kizer, Pastor  
 "A Growing Church in a Progressive Community"  
**SUNDAY**—  
 Sunday School—9:45 a.m., Talmadge Woodard, Superintendent. There is a welcome here for all ages.  
 Morning Worship—11:00 a.m. Sermon by the pastor. Subject: "Andrew, the Introducer".  
 Training Union—6:30 p.m., Frank Saunders, Director.  
 Evening Worship—7:30 p.m. Sermon by the pastor.  
**Announcements and Activities**  
 The nursery will be open during all services Sunday. We are equipped to care for children of all ages.  
**MONDAY**—  
 7:30 p.m.—The YWA will meet in the home of Miss Barbara Chase.  
**MONDAY**—  
 7:30 p.m.—The Board of Deacons will meet in the home of Dr. W. H. Kitts.  
**WEDNESDAY**—  
 7:00 p.m.—Weekly Bible Hour. Topic: "Teachings of Jesus".  
**THURSDAY**—  
 7:30 p.m.—Monthly Workers Council meeting at the church.  
 Visitors are always welcome to worship with us—our church is small enough to appreciate you; large enough to serve you.

## Richland Baptist Church

The Rev. Edgar Willis, Pastor  
**SUNDAY**—  
 10:00 a.m.—Sunday School. Wayne Caldwell, Supt.  
 11:00 a.m.—Morning Worship. Sermon by the pastor.  
 6:45 p.m.—Training Union. Everett Cutshaw, Director, and Roy Parton, Associate Director.  
 7:30 p.m.—Evening Worship.  
**WEDNESDAY**—  
 7:00 p.m.—Prayer meeting and Bible Study.

## The Haywood Charge Methodist Church

V. N. Allen, Pastor  
 REAVERDAM  
 1st Sunday, 11 a.m.—Sermon.  
 2nd Sunday, 7 p.m.—Sermon.  
 4th Sunday, 11 a.m.—Sermon.  
**LOUISA CHAPEL**  
 1st Sunday, 7 p.m.—Sermon.  
 3rd Sunday, 11 a.m.—Sermon.  
**PINEY GROVE**  
 2nd Sunday, 11 a.m.—Sermon.  
 3rd Sunday, 7 p.m.—Sermon.  
 4th Sunday, 7 p.m.—Sermon.

## The Christian And Missionary Alliance Church Of Canton

"A Bible Church With A Christ Centered Message"  
 The Rev. David Richardson, Pastor  
**SUNDAY**—  
 2:15 p.m.—Bible Study.  
 3:00 p.m.—Afternoon Service.  
 7:30 p.m.—Evangelistic Service.

## North Hazelwood Baptist Church

The Rev. Avery Peck, Pastor  
 Sulphur Springs Road and Fairview Road  
**SUNDAY**—  
 10:00—Sunday School.  
 11:00—Morning Worship. Sermon by the pastor.  
 7:00—Training Union.  
 Cottage Prayer Meeting each Saturday night.  
 Bible Study and Prayer Meeting led by the pastor every Wednesday night.

## Fairview Baptist Church

PLOTS CREEK  
 The Rev. Lee Smith, Pastor  
**SUNDAY**—  
 Sunday School—10 a.m. Claude McLean, Superintendent.  
 Sermon by the pastor—2nd and 4th Sunday mornings and 1st and 3rd Sunday nights.

## Fines Creek Methodist Charge

M. B. Lee Pastor  
**Fines Creek Methodist Church**—  
 Church School, 10 a.m. Frank Rathbone, Superintendent.  
 Worship Service, 11 a.m. 2nd and 3rd Sundays.  
 Fellowship in music and meditation 7 p.m. 1st Sunday.  
**Pine Grove Methodist Church**—  
 Church School, 10 a.m. Charles Duckett, Superintendent.  
 Worship Service, 11 a.m. 4th Sunday.  
 Worship Service, 7 p.m. 2nd Sunday.

## Cove Creek Baptist Church

The Rev. Carl Cook, Pastor  
 10 a.m.—Sunday School. Mrs. D. C. Davis, Superintendent.  
 Sermon by the pastor 1st and 3rd Sunday mornings and 2nd and 4th Sunday nights.

## The Golden Text



The student Christian.  
 "He that is faithful in that which is least is faithful also in much; and he that is unjust in the least is unjust also in much."—Luke 16:10.

## Fines Creek Memorial Baptist Church

The Rev. Harold Townsend, Pastor  
**SUNDAY**—  
 Sunday School—10 o'clock every Sunday. Reeves Ferguson, Supt.  
 Morning Worship—11 o'clock every 2nd and 4th Sundays.  
 Evening Worship—7:30 every 1st and 3rd Sundays.

## Free Methodist Church

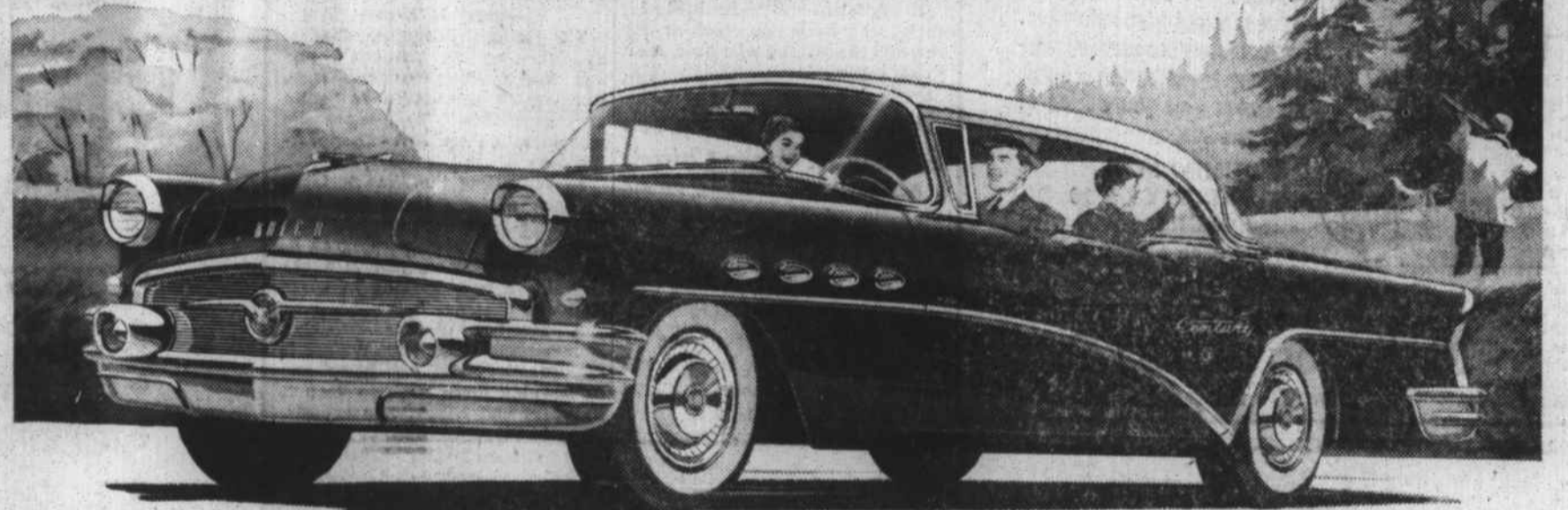
The Rev. Russell M. Elder, Pastor  
 Telephone GL 6-3597  
 Assembly and Oak Streets, Waynesville  
**SUNDAY**—  
 Sunday School, 10:00 a.m.  
 Morning Worship, 11:00 a.m.  
 Young People's service, 7:00 p.m.  
 Evening Evangelistic Service, 7:45 o'clock.  
**WEDNESDAY**—  
 7:45 p.m.—Bible Study.

## BARGAINS IN GOOD USED APPLIANCES

- 1—21 in. Motorola table model TV. Good as new ..... \$130.00
- 1—17 in. Motorola Table model TV. A real buy — Only ..... \$ 70.00
- 1—17 in. Emerson table model TV. A bargain ..... \$ 95.00
- 1—17 in. General Electric table model TV. Only ..... \$ 95.00
- 1—17 in. Admiral table model TV. An excellent set ..... \$100.00
- 1—14 in. Halcraft table model TV. Yours for only ..... \$ 60.00
- 1—RCA radio-record player combination. Plays all three speeds. Was \$269.95 — Now only \$100.00
- 9—Good used electric Ranges. Unusual bargains — Priced from ..... \$ 30.00
- 1—Combination wood and electric Range. Only ..... \$100.00
- 1—Good Tappan Gas Range. Yours for ..... \$ 40.00
- 1—Used Caloric Gas Range. A real buy ..... \$ 50.00
- 1—6 cu. ft. Frigidaire refrigerator. Extra clean ..... \$ 60.00
- 1—12 cu. ft. Leonard refrigerator. Same as new ..... \$125.00
- 1—10 cu. ft. Kelvinator refrigerator, New freezing unit ..... \$140.00
- 1—6 cu. ft. Coldspot refrigerator. Buy it for only ..... \$ 35.00
- 1—9 cu. ft. Kelvinator refrigerator. It's only ..... \$ 60.00
- 1—30-gallon Hotpoint electric water heater. Only ..... \$ 70.00
- 1—30 gallon gas water heater. Make us an offer.
- 8—Good used washing machines. Priced from \$ 15.00

**ROGERS ELECTRIC COMPANY**  
 Dial GL 6-6351 Main Street

# TWIN-TRIGGERED for double-action take-off



(Have you tried the new Variable Pitch Dynaflo?\*)

There is something you'll find only in a 1956 Buick. And we think this action is so exciting, you ought to come in for a sampling before another sun sets. For Buick's new Variable Pitch Dynaflo is more than just the smoothest, the sweetest, the most responsive transmission yet developed. It's quick and it's nimble—it's a gas-saver and a great safety factor—the most thrilling safety measure on the American scene today. When we say twin-triggered, we mean just that. You move the first trigger the moment you press the gas pedal no more than an inch. That nudge taps a fraction of the mighty

power in Buick's big 322-cubic-inch V8 engine. That nudge gives you quick new getaway response. That nudge brings you all the power and snap and performance you need for normal driving and cruising. And since all this is at only part throttle, your gas mileage goes up substantially. Then comes the next trigger—when you need all-out acceleration for an emergency safety-surge. You just floor the pedal—and that switches the pitch of this airplane-principled transmission. Instantly, you're at full-power take-off—and it's like a second getaway cutting in—a thrill and a safety sweep like nothing you've ever experienced before in an earthbound vehicle.

Surely you owe yourself the treat, the twin thrills, the deep satisfaction and just the sheer fun hours that go with driving the best Buick yet. Why not come in tomorrow and match up the words with the action?

\*New Advanced Variable Pitch Dynaflo is the only Dynaflo Buick builds today. It is standard on Roadmaster, Super and Century—optional at modest extra cost on the Special.

**Best Buick yet**

AT A NEW LOW PRICE—4-Season Comfort  
 In your new Buick with FRIGIDAIRE CONDITIONING

## TAYLOR MOTOR COMPANY

Haywood Street

FRANCHISED DEALER — LICENSE NO. 982

Waynesville