

Riverside Baptist Church

The Rev. Paul Grogan, Pastor
FRIDAY—
 7:30 p.m.—Lesson Study for teachers taught by Lynn Chambers at homes to be announced.
SUNDAY—
 10:00 a.m.—Sunday School, Paul Erwin, Superintendent, in charge.
 10:45 a.m.—Junior Choir sings, Edgar Burnette, director.
 11:00 a.m.—Sermon by the pastor 2nd and 4th Sundays. Observance of the Lord's Supper the second Sunday of each quarter.
 7:00 p.m.—Training Union, Edgar Burnette, director, in charge. Invitation to everyone is extended. Training groups for all ages are available. Also a Bible Class.
 7:45 p.m.—Evening Worship 1st and 3rd Sundays.
 7:45 p.m.—General Assembly Program 2nd and 4th Sundays by various groups.

TUESDAY—
 7:00 p.m.—Cottage prayer meeting at various homes.

WEDNESDAY—
 7:00 p.m.—Midweek prayer meeting at the church, Pastor in charge.
 7:30 p.m.—Choir practice, Junior Sorrells, Chorister.

THURSDAY—
 9:00 a.m.—W.M.U. Quilting. Mrs. J. H. Reece, hostess. Covered dish luncheon at the noon hour will be served.

St. John's Church

WAYNESVILLE
 The Rev. Lawrence Newman, Pastor.
 Schedule of Catholic Masses for Western North Carolina
 Waynesville—8:00 and 11:00 — St. John's Church.
 Canton—9:15—Immaculate Conception Chapel.
 Cherokee — 10:00 — Artist Craft Bldg. (Summer only).
 Bryson City—8:00—St. Joseph's Church.
 Murphy—8:00 — St. William's Church.
 Fontana—11:00 — Our Lady of the Lake.
 Franklin — 10:00 — St. Francis Church.

Christian Science Service

The Christian Science lesson-
 sermon will be read Sunday morning at 11 o'clock in room number 17 on the second floor of the Masonic Temple.
 Public is invited.

Fairview Baptist Church

PLOTS CREEK
 The Rev. Lee Smith, Pastor
SUNDAY—
 Sunday School—10 a.m. Claude McLean, Superintendent.
 Sermon by the pastor—2nd and 4th Sunday mornings and 1st and 3rd Sunday nights.

Salvation Army

MOUNTAIN MISSION DISTRICT
 Max Patch Road
 Drawer 629 Tel GL 6-6718
 Major Cecil Brown, District Officer.
 Lieut. Glenn West, Assistant.
 Lela Frennell, Assistant.
 Blanche Lowe, Secretary.
 Jean Fresse, Children's Worker.
ACTIVITIES: Preaching services, Sunday Schools, Y. P. Legion, Bible Classes, Ladies' Home League, Home visitation in all Centers.
CHURCHES: Max Patch — Headquarters, Shelton Laurel, Little Creek, Bonnie Hill, Sleggy Valley, and Timber Ridge.

The Church Of The Nazarene

Opposite The Court House
 118 Depot Street
 The Rev. Don E. Conrad, Pastor
 Phone GL 6-6310

SUNDAY—
 9:45 a.m.—Sunday School, H. A. Jeffries, superintendent.
 This Sunday will be Class Sunday. We will be honoring the class that has the largest in attendance. You are invited to be present with us to study the Word, Remember, there is a class for everyone.

11:00 a.m.—Morning Worship. Pastor will deliver the message.
 6:45 p.m.—Junior Service. Mrs. Dorothy Conrad, Director.
 6:45 p.m.—Young People's Service, Mrs. Juanita Godwin, president.

7:30 p.m.—Evangelistic Service.
WEDNESDAY—
 7:30 p.m.—Prayer Meeting. Prayer! Praise! and Missionary Service.

Grace Church in the Mountains

EPISCOPAL
 The Rev. James Y. Perry, Rector
 Telephone GL 6-5936

SUNDAY—
 9:30 a.m.—Church School and family worship, All departments.
 10:45—Nursery through church service.
 11:00 a.m.—Litany and sermon.
 12:00 Noon—Coffee Hour. Visitors welcome, Parish House.
 7:00 p.m.—Youth League meeting, Parish House.

TUESDAY—
 6:00 p.m.— Vestry meeting — Towne House.
 7:30 p.m.—Church School Teachers' Meeting—Rectory.

WEDNESDAY—
 3:15 p.m.—Junior Choir practice.
 6:00 p.m.—Lenten service and supper.
 8:00 p.m.—Choir practice.

THURSDAY—
 8:00 p.m.—Local AA Chapter meeting, Parish House.

FRIDAY—
 9:00 a.m.—Service of Holy Communion.

Sunday School Lesson

Jesus Interprets History

CHRIST PROPHESES THE COURSE AND END OF AN AGE

Scripture—Luke 17:20-21; 21:5-36.

By NEWMAN CAMPBELL.

IN A RECENT lesson we studied the prophetic statement about the coming of the kingdom of God in answer to the demand of the Pharisees, ending with the statement that "the kingdom of God is within you." That was a burning question of the day. When would the Messiah come, bringing with him the kingdom of God on earth? However, the Pharisees had already renounced the Messiah sent to them, and would shortly put an end to His life on earth.

The disciples must have known that Jesus' enemies would put Him to death as soon as possible, but, looking at the temple in Jerusalem, they spoke to Him of its beauty—the decorations of precious stones and the gifts it contained. Jesus replied "the days will come in the which there shall not be left one stone upon another, that shall not be thrown down."

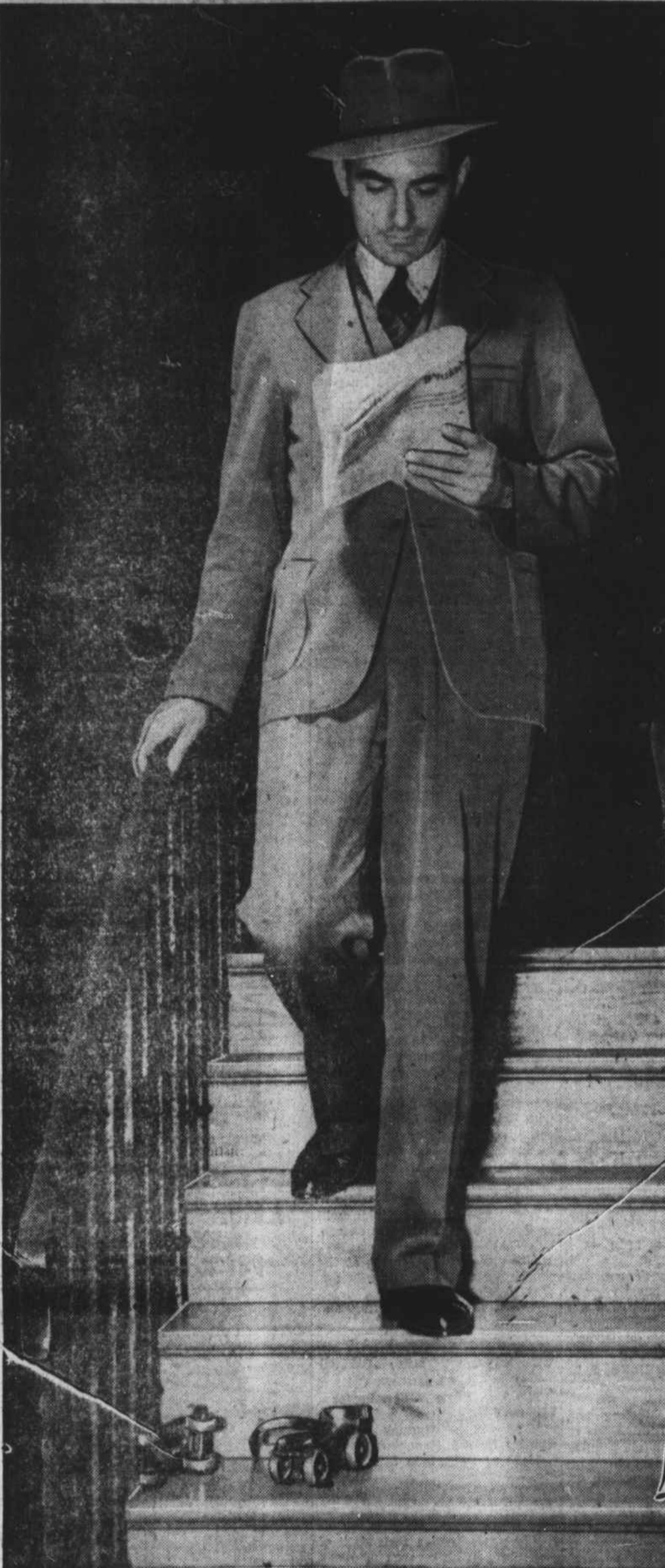
When they asked Christ when

MEMORY VERSE
 "Heaven and earth shall pass away; but My words shall not pass away."—Luke 21:33.

His coming:
 "And take heed to yourselves, lest at any time your hearts be overcharged with surfeiting, and drunkenness, and cares of this life, and so that day come upon you unawares."
 "Watch ye therefore, and pray always, that ye may be accounted worthy to escape all these things that shall come to pass and to stand before the Son of man."

In the parable of the fig tree, Christ points out how with the bursting of the leaves of the fig and all other trees, men know that summer is near. We all know that when the leaves and buds come on the fruit trees, summer is on the way, and we hope that no killing frost will blight the harvest. Let us so live that we need not fear whatever comes, but can be serene knowing that we can never live "beyond God's love and care."

Based on copyrighted outlines produced by the Division of Christian Education, National Council of Churches of Christ in the U.S.A., and used by permission. Distributed by King Features Syndicate



ACCIDENTS WILL HAPPEN!

A child's roller skates left on the stairs . . . a man deeply engrossed in his paper . . . one more step . . . fate closes in!

But it isn't fate. Just the careless, thoughtless preoccupation of humanity.

No religion can guarantee our safety from accidents like this one.

But the Christian Church offers man safety from greater perils. It teaches him the dangers inherent in his own impulses . . . it shows him his responsibility for the lives and faith of others . . . it stimulates his soul-deep yearning to know God . . . it assures him that life has eternal meaning through Jesus Christ.

Accidents will happen—but spiritual tragedy need not! For the eternal safety of all men, the careless, the thoughtless, the preoccupied: Christ died.

THE CHURCH FOR ALL . . . ALL FOR THE CHURCH

The Church is the greatest factor on earth for the building of character and good citizenship. It is a storehouse of spiritual values. Without a strong Church, neither democracy nor civilization can survive. There are four sound reasons why every person should attend services regularly and support the Church. They are: (1) For his own sake. (2) For his children's sake. (3) For the sake of his community and nation. (4) For the sake of the Church itself, which needs his moral and material support. Plan to go to church regularly and read your Bible daily.

Day	Book	Chapter	Verses
Sunday	Exodus	20	1-17
Monday	Psalm	51	1-15
Tuesday	John	8	12-25
Wednesday	John	8	23-32
Thursday	John	11	18-29
Friday	Thessalonians	5	11-28
Saturday	James	4	1-17

Copyright 1954, Keltner Adv. Service, Strasburg, Va.

<p>Allison Construction Co., Inc. — Asphalt Paving — Balsam Rd. Dial GL 6-5621</p>	<p>W. B. Dillard's Builder's Supply & Hardware Co. "Complete Line of Building Materials" Main at Academy Dial GL 6-5443</p>	<p>Haywood County Farmers Cooperative — Feeds, Seeds, Fertilizer — 216 Depot Street Dial GL 6-8621</p>	<p>Rogers Electric Company Sales and Service of All Electrical Appliances 437 Main St. Dial GL 6-6351</p>
<p>Allison & Duncan Oil Co. Distributors of Phillips 66 Dial GL 6-3921 Hazelwood</p>	<p>Farmers Exchange "Dealers in Quality Seeds" Feeds - Fertilizers - Insecticides Asheville Rd. Dial GL 6-5335</p>	<p>Haywood Electric Membership Corporation Asheville Road GL 6-4666</p>	<p>Smoky Mtn. Self-Service Grocery Free Delivery Balsam Road Dial GL 6-6565</p>
<p>Belk-Hudson "Home of Better Values"</p>	<p>Farmers Hardware and Supply Co. "Quality and Service At Reasonable Prices" Depot Street Dial GL 6-8169</p>	<p>Haywood Esso Distributor, Inc. — Heating Oils — Day Phone GL 6-5056 Night Phone GL 6-8273</p>	<p>Turner's Store "Never Buy Before You Try Turner's"</p>
<p>The Book Store and Haywood Typewriter Co. Dial GL 6-3691 or GL 6-6830</p>	<p>Firestone Home & Auto Supply Store Bill Cobb Dial GL 6-3671</p>	<p>R. R. Kibbe, Jr., Consignee Texas Petroleum Products Furnace Oil, Crystallite, Gasoline, Motor Oils Railroad St. Dial GL 6-4591</p>	<p>The Waynesville Mountaineer A Complete Newspaper</p>
<p>Central Cleaners "Superior Cleaning and Pressing" Church & Montgomery Sts. Dial GL 6-3471</p>	<p>Kurt Gans JEWELER "Something from the Jeweler's is Always Something Special"</p>	<p>Moody Rulane Gas Service "For Dependable Gas Service" 902 N. Main Dial GL 6-5971</p>	<p>Waynesville Auto Parts Wholesalers of Standard Parts & Accessories 208 Haywood St. Dial GL 6-5321</p>
<p>Charles Shell Service Dayton Thorobred Tires Dial GL 6-4053 Hazelwood, N. C.</p>	<p>Garrett Furniture Co., Inc. Dial GL 6-5325</p>	<p>Penland Brothers Refrigerator Co. Sales and Service "Everything in Commercial Refrigeration" Dial GL 6-5223 Wall Street</p>	<p>Waynesville Radio Service Waynesville's Leading Radio and TV Service 136 Miller Street Dial GL 6-4321</p>
<p>Charlie's Drive-In Owners — Charlie Woodard and Jimmie Williams Complete 24-Hour Service</p>	<p>Haywood Builders Supply Co. "Where There is a Material Difference" Depot Street Dial GL 6-6051</p>	<p>Red Wing Gift Shop Gift and Decorative Accessories Costume Jewelry - Greeting Cards 283 N. Main St.</p>	