

PUBLISHED EVERY MONDAY

The Mountaineer's

PUBLISHED EVERY MONDAY

# Farm Review and Forecast

## Haywood County Aiming At No. 1 Spot In State ASC Assistance Program

### LET US FILL YOUR A.S.C. ORDERS

- We Have A Complete Line of Field Seeds — Also Blue Ridge Plant Food . . . And
- BAGGED OR BULK LIME
- 2-12-12 FERTILIZER
- SUPERPHOSPHATE
- POTASH

REMEMBER YOU SAVE TWICE AT YOUR

Haywood County Farmers Co-op, Inc. H. M. DULIN, MGR. Depot Street Dial GL 6-8621

### SPECIALS AT YOUR FARMERS FEDERATION

- LAWN SEEDS
- SHEEP MANURE 50 LB. BAG — \$1.95
- COW MANURE 50 LB. BAG — \$1.95
- POULTRY LITTER 50 LB. BAG — \$1.50
- PEAT MOSS 7 1/2 CU. BALE — 5.00

FARMERS FEDERATION GL 6-5361 250 Depot St. Waynesville

### 80 Per Cent Participation Sought Here

The Haywood County ASC organization has set its sights on the No. 1 spot in the state in ASC participation, county manager A. W. Ferguson said today.

Last year, with 56 per cent of all farmers participating in the ASC program, Haywood County ranked third in North Carolina. This year, Mr. Ferguson said, the goal is for 80 per cent participation.

At any rate, he added, considerable improvement probably will be made this year because almost daily farmers who have not been in the program for several years



You can't beat...



### SPARTAN SPECIAL Dairy Feed

- ✓ Chock-full of big, crimped oats!
- ✓ Fines are pelleted, can't sift out!
- ✓ Molasses flavored—extra palatable!

PARTON FEED STORE 428 Depot St., Waynesville Your SQ Feeds Dealer

### 10 4-H Members Will Get Chicks, For Pullet Chain

A total of 1,350 pullets will be distributed at the Farmers Federation warehouse here this afternoon to 10 members of county 4-H Clubs as a part of the annual 4-H pullet chain program.

Each of the 10 4-H'ers will receive 100 pullets free of charge from the Farmers Federation. In approximately six months, when the pullets start to come into production, an auction will be held here to sell 120 of the best birds raised by the 4-H members. All proceeds from the sale goes back into the 4-H pullet chain fund.

Members of the 4-H who will get pullets Monday are Jennings Plummons and Tom Garrett of Saunook, Richard Holland of Canton, Kenneth Farmer, Neal Allison, Steve Henson, and Powell McE'oy, all of Bethel, Bobby Case of Maggie, and Wayne Stahl of Lake Junaluska. One more club member is still to be selected.

In addition to the 100 he will receive from the pullet chain, Jennings Plummons is purchasing an additional 350 chicks in order to have a large laying flock this summer.

Last year, Jennings and his sis-

are applying for 1956 assistance. Mr. Ferguson pointed out that Haywood farmers have already made application for \$60,000 in assistance of the total of \$77,000 allocated to the county for the ASC program.

He said that assistance is now being approved at an average of \$2,000 a day, and added that the county's funds for spring planting practices will be exhausted by the end of this month or sooner.

The fall seeding program will start between June 15 and July 1 when approximately \$8,000 will be made available to county farmers. The 1957 program will get under way some time after September 1.

Mr. Ferguson said that in recent years the ASC allocation for Haywood County has ranged between \$75,000 and \$80,000. The amount of funds allocated, he said, depends on participation by a county's farmers.

He disclosed that the national appropriation for ASC assistance in 1957 will be \$250,000,000 and that North Carolina will get about \$4,000,000 of the amount.

The ASC program has been in effect in the U. S. since 1936. Mr. Ferguson pointed out.



ONE OF THE FEW natural-rock silos in Haywood County is this one on the farm of J. Edgar Burnette of Cecil Community, situated near the intersection of the Lake Logan and McClure

Creek roads. County Agent Virgil L. Holloway said rock silos are effective if well built and lined properly. (Mountaineer Photo.)

### Don't Fight Over Trees, There Are Some For All

Don't fight over those trees, men! There's some for everyone in the lumber game—as long as folks are satisfied with some rather than all, says Jim Andersen, State College extension forestry specialist.

Andersen says that there's a squabble going on between sawmillers and pulpwood people. And the only way to resolve the argument is for the two factions to cooperate a little more.

Here's how the argument goes, according to Andersen:

Pulpwood dealer: "Getting so you can't find a two-inch green, living thing in the piney woods no

more with them 'blankety' sawmillers butchering everything clean down to the size of half a toothpick."

Sawmiller: "Ain't goin' to be a stick left after them pulp 'pecker-wooders' finish their slaughter. Won't be in business next year if I got to put up with their mess."

The forestry specialist says there's more than a grain of truth on both sides.

As an answer to the problem, he quoted an authority in "Forestry Digest" urging lumbermen to sell small trees to pulpwood people rather than lose money trying to make lumber out of them. On the other hand, the article asked that small trees of promising quality and vigor be grown to sawtimber size for maximum profit.

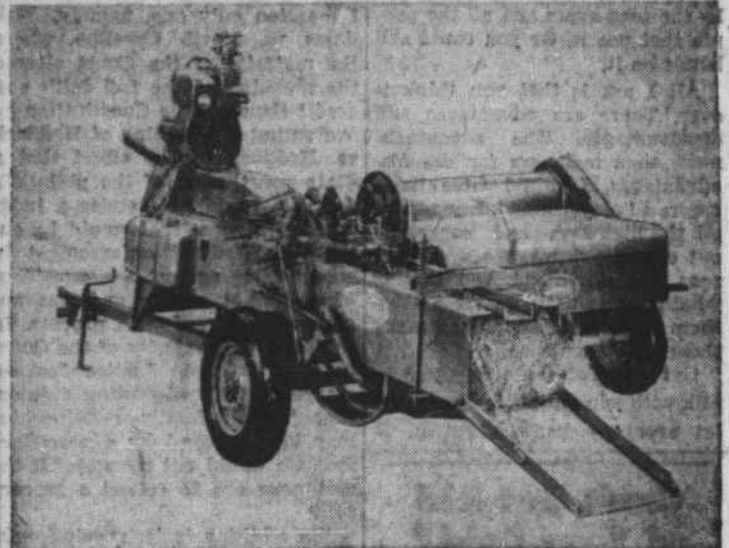
Use Mountaineer Want Ads

Reports of damage to pines by bark beetles are becoming more frequent in the northeastern section of North Carolina—especially in the lower-Piedmont area.

The number of cows to be milked in 1956 in this country is estimated at 22,200,000, an increase of slightly less than one per cent over 1955.

The highest cotton support prices in America are available to North Carolina farmers because they are close to the mills. If all the hogs in the United States were distributed evenly across the country there would be 18 for each square mile of land.

## BIG NEWS FROM ROGERS TRACTOR Co.



Ford Motor Company announces a new automatic twine tie hay baler, designed for one-man operation and employing sweep fork feed, unique in the lowest-priced baler field. The new four-bales-a-minute machine is the Ford 250, available in three models, engine driven with starter or without starter, and power take-off.

Pay Only 1/3 Down (Cash or Trade) Balance Up to 3 Crop Payments or 34 Monthly Payments.

## ROGERS TRACTOR Co.

Specialists In Farm Equipment Financing Phone Canton 3944 Clyde, N. C.

## NOW IS THE TIME TO FEED YOUR PASTURES

— assure strong, healthy plants to resist hot, dry weather . . . particularly if you did not fertilize in the fall. NOW a heavy application is advisable.

### BLUE RIDGE ALFALFA and PASTURE PLANT FOOD IN THE RECOMMENDED GRADES

2-12-12 0-9-27 0-14-14 0-10-20

(with or without Borax)

— these will provide just what your pastures need in a properly balanced, well-cured plant food:

The County Agent's office reports a high percent of deficiency in phosphorus in soils of Haywood county. The only phosphates produced in Western North Carolina are right here . . . manufactured in the most efficient and economical form as normal 20% Superphosphate. So why let your crops suffer for what is in your own backyard?

CALL YOUR FRIENDLY DEALER NOW AND ORDER

## Blue Ridge Super Phosphate 20%

Made By

## Smoky Mountains Fertilizer Co.

WAYNESVILLE, NORTH CAROLINA

### BEE SUPPLIES

- Standard Hives Comp.
- Hive Bodies Empty
- IV Ventilated Cover
- Metal & Inner Covers
- Inner Covers
- Supers
- NTB Brood Frames
- Wired Brood Foundations
- Alexander Veils
- Super Foundations
- Brood Frames
- Super Frames
- W & W Excluders
- Boardman Feeders
- Bee Escapes
- Bee Brushes
- Queen & Drone Traps
- Bee Gloves
- Smoke Engine Smoker
- Doctor Smokers

All Items Are For Standard 10-Frame Hives Queens or 2, 3 or 4-lb. packets plus Queens also available

We Sell Only Lewis-Dadant Quality Beeware

### Farmers Federation

Dial GL 6-5361

250 Depot St.

Waynesville

### PAINTING GUIDE



For toys, kitchen, porch furniture, everywhere you want a permanent high-gloss finish, use Moore's Impervo Enamel. Quick drying colors—easy to apply—Weatherproof.

\$2.10 Quart

Benjamin Moore paints

### CLINE - BRADLEY CO.

Joe Cline - Dick Bradley

GL 6-3181

Hazelwood



## FREE CHICK DAY SATURDAY, MARCH 24th

10 FREE CHICKS TO EACH CUSTOMER WITH THE PURCHASE OF 25 POUNDS OF PURINA CHICK STARTENA AS LONG AS CHICKS LAST

These Are Heavy Cockerels and Will Make Fine Eating In 7 to 8 Weeks — BRING YOUR OWN BOX

## CLINE - BRADLEY CO.

Joe Cline — Dick Bradley

Phone GL 6-3181

5 Points, Hazelwood