

Formal Dedication Of New Crabtree Methodist Church Is Set For Sunday



REV. A. R. DAVIS
—present pastor



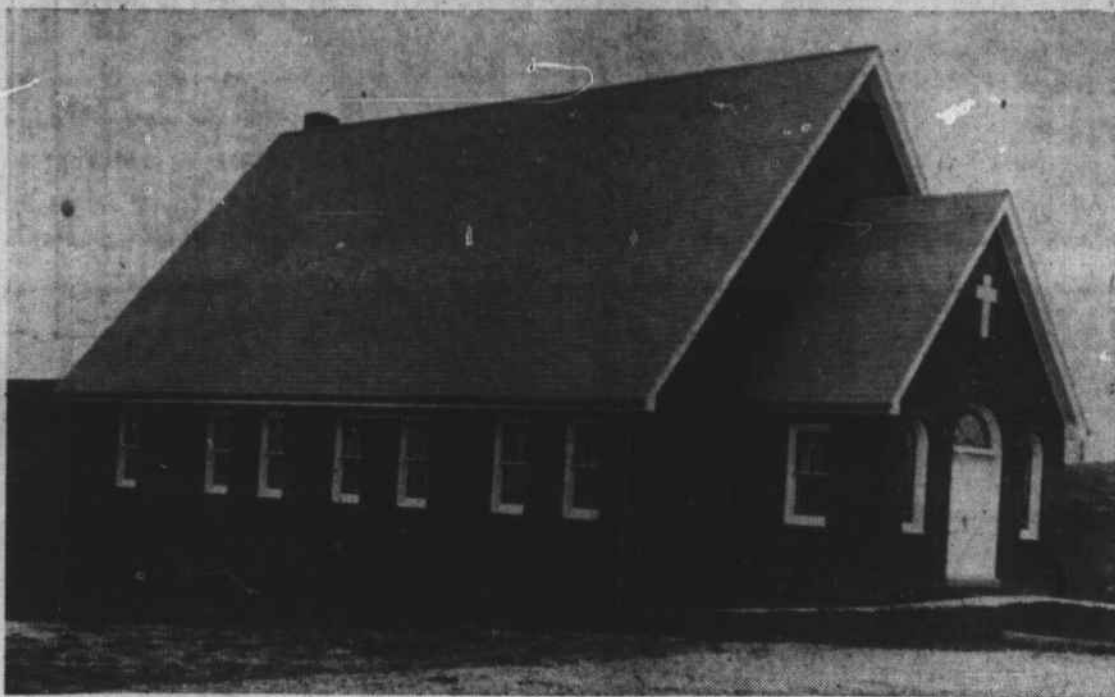
MRS. C. O. NEWELL
—morning speaker



REV. FRANK C. SMATHERS
—district superintendent



REV. C. O. NEWELL
—former pastor



THE NEW CRABTREE METHODIST CHURCH will be formally dedicated at services Sunday. The \$25,000 building was constructed in 1951, and its dedication represents the completion of all

payments on the cost. The church was built during the pastorate of the Rev. Mrs. C. O. Newell. Present pastor is the Rev. A. R. Davis. (Mountaineer Photo).



THE PARSONAGE of the Crabtree Methodist Church is in the limelight today because of the dedication Sunday of the Crabtree Church. It is hoped that the parsonage can be dedicated this

year, as payments on its cost are within a few hundred dollars of its estimated \$12,000 cost. (Mountaineer Photo).

Program Will Begin At 10:30 Services

Dedication services will be held Sunday at the \$25,000 Crabtree Methodist Church which was completed in 1951. District Superintendent Frank Smathers of Lake Junaluska will dedicate the edifice.

The Rev. A. R. Davis, pastor, will officiate, assisted by two former pastors, the Rev. C. O. Newell and the Rev. Mrs. Newell, and by Mr. Davis's father, the Rev. F. R. Davis of Mooresville.

The laying of the cornerstone, donated by the Haywood Monument Company, will take place at 2 p.m.

The day's schedule opens with Sunday school at 10 a.m., with Superintendent B. F. Nesbitt in charge. Mrs. M. B. Reeves, Jr., will have the devotional. Taylor W. Hawkins of Canton First Meth-

odist Church will teach the adult class and Mr. Newell, now living in Creston, will teach the young adult class. Special music will be

presented, with Miss Sue Medford at the piano. At 11 a.m. Mrs. Newell will bring the morning message, the theme

of which will be "The Church of my Dreams." A fellowship lunch will be served at the noon hour in the dining

room of the church. The church is of red brick, with the sanctuary seating about 150 persons and a choir of 30. An

assembly room accommodates some 100 persons for meals, and by means of plastic curtain partitions (Continued on Page 6)

Crabtree Methodist History Spans Ninety-One Years

By MRS. MILLARD FERGUSON

The present Crabtree Methodist Church, to be dedicated Sunday, was built in 1951 during the pastorate of the Rev. Mrs. C. O. Newell on ground purchased by

members. The first service was held November 4, 1951.

This new church supersedes the old Crabtree Methodist Church known as Parkers Chapel, which in turn had superseded the origi-

SPEAK YOUR LOVE
in words of imperishable granite or marble



A monument of granite or marble is a symbol of devotion that will forever remain beautiful, visible. Reverently and eloquently, it will record for posterity the warmth of your family love.

If you have not already spoken your sentiment, do it now as a family. Don't leave it for someone to do alone. Choose your family plot in a cemetery that allows you the privilege of erecting the traditionally American type of memorial—a distinctive upright monument.

As local dealer-members of the Monument Institute of America, we are qualified to assist you in selecting a stone that meets both your desires and your budget. Come in and see us now.

Please send free booklet to:

NAME _____
ADDRESS _____
CITY _____
STATE _____

HAYWOOD MONUMENT CO.

H. B. "Herb" Angel

Asheville Road

Dial GL 6-5191

nal one-room log house which had been erected some time before the Civil War on land given by David McCracken and used as a school.

In the spring of 1865 a group of citizens, among whom were the families of Tommie and William Ferguson, Nathan Gibson and Enos McCracken, and perhaps others of whom there is no record, organized the first Methodist Episcopal Church in this end of the county.

At that time two itinerant Methodist preachers, one a Northern and one a Southern Methodist, were in the area and both contended for the membership. It was decided that these two preachers should hold a debate on their respective disciplines.

The debate was won by the Southern Methodist preacher, whose name was Parker, (the Northern preacher's name is unknown) and this same log school house was dedicated as Parkers Chapel with Mr. Parker its first pastor.

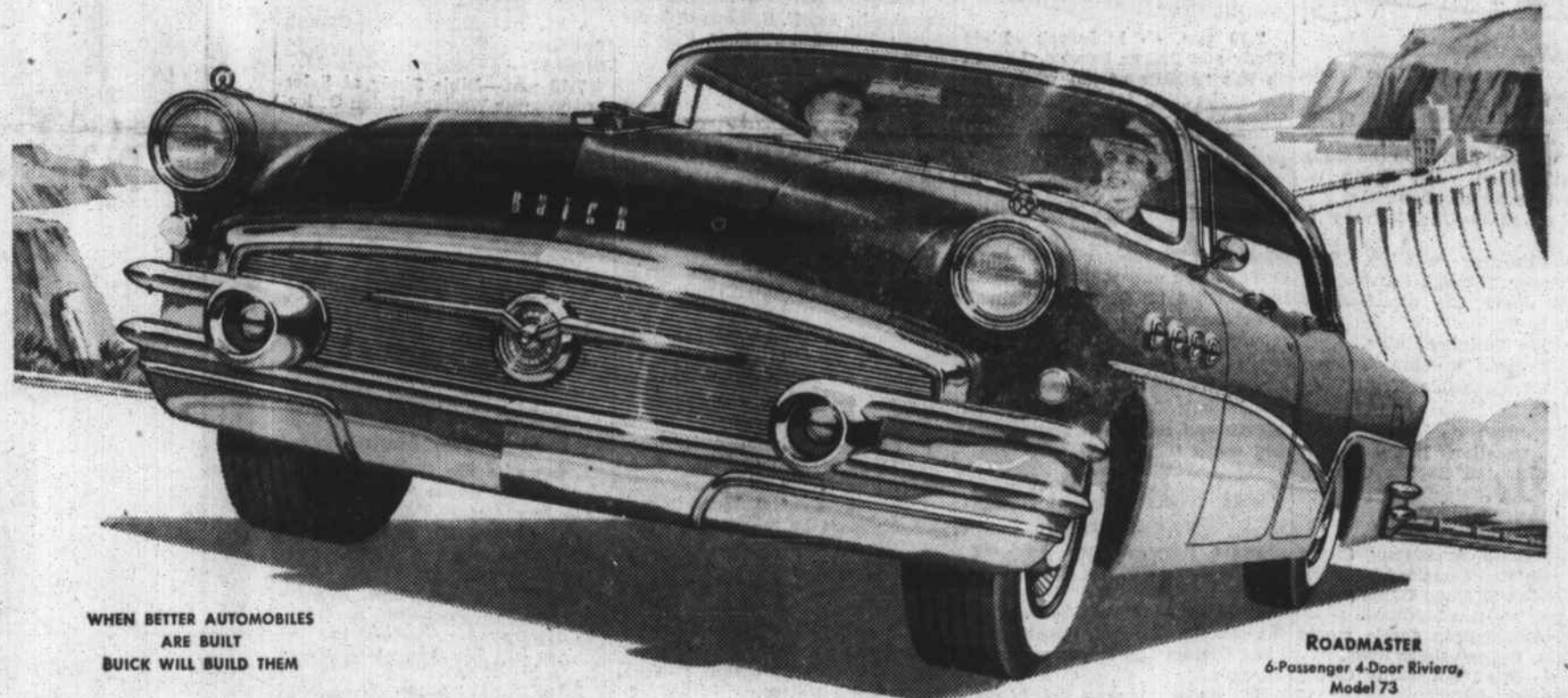
In 1870 more ground was given by David McCracken, who was himself a devout member of the Crabtree Baptist Church, but whose son Enos was one of the Methodist founders. On this ground, on the site of the log house, a new—and at that time modern—one-room frame church was erected, which continued under the name of Parkers Chapel. Joel L. Terrell built this church, with his son "Pink" as apprentice. Many years later the son returned to Crabtree as pastor and will be remembered as the Rev. T. L. Terrell.

In 1909, during the pastorate of Rev. R. G. Kirk, the church was renovated, being almost completely rebuilt; and again in 1925, during the pastorate of the Rev. Van C. Harrison, major repairs were made.

When the present church was built in 1951 the name was changed to Crabtree Methodist Church.

Several years after Parkers Chapel was built, David McCracken gave more land for a parsonage. This was sold in 1954 to Mr. and Mrs. Sam Noland, who continue to make their home there. The purchase price was applied on the present brick parsonage, which was erected in 1954 on a lot adjoining the church.

TWO-TON LIFT at a Feather Touch



WHEN BETTER AUTOMOBILES ARE BUILT BUICK WILL BUILD THEM

ROADMASTER 6-Passenger 4-Door Riviera, Model 73

Now here's a brawny beauty. Heavy and hefty. But the biggest story is not the size—it's the sizzle.

Just take this two tons of steel and glass and fabric and foam rubber out on the road—and we predict you'll be overwhelmed by its hair-trigger response to your every wish or whim.

You'll find new eagerness in the Buick getaway. Not just from higher compression in that 322-cubic-inch brute of an engine—they've found a better way to trigger all that torque.

It's a new step-up in Variable Pitch Dynaflo.* Just a puny bit of pressure on the pedal, and you're off and away.

And when you do tromp the treadle, you switch the pitch—and get an awesome

safety-surge of top-torque power instantly.

You whoosh right up to legal speed limits in just a few heartbeats' time.

And even then the thrills are just beginning.

You'll find new buoyancy in the Buick ride. New floating comfort. Because new deep-oil-cushioned shock absorbers and deep-coil springs do battle with the bumps, and take all the beating for you.

You'll find new steadiness on curves and corners. Because now Buick has a new torque-tube, new stabilizers, and a whole new front-end geometry. You take corners

at normal driving speeds—as level as if you were crawling.

You'll find new lift and lilt, new jiffy response built into every pound of this massive beauty. And just a few ounces of pressure sets it off.

Best of all, perhaps, is the ease with which you can own it. All this is yours, in whatever model or color combination you want—at a price you can afford to pay.

May we prove it?

*New Advanced Variable Pitch Dynaflo is the only Dynaflo Buick builds today. It is standard on Roadmaster, Super and Century—optional at modest extra cost on the Special.

BEST BUICK YET

AT A NEW LOW PRICE—4-Season Comfort in your new Buick with FRIGIDAIRE CONDITIONING

TAYLOR MOTOR COMPANY

DIAL GL 6-3591

FRANCHISED DEALER LICENSE NO. 982

HAYWOOD STREET

FREE DOOR PRIZES EVERY DAY at BELK-HUDSON'S FOUNDER'S DAYS SALE — — HURRY! HURRY!