

PUBLISHED EVERY  
MONDAY

The Mountaineer's

PUBLISHED EVERY  
MONDAY

# Farm Review and Forecast

## Milk Called 'Good Buy' At Twice Present Price

Milk would be a good buy at almost twice the price it now costs, says D. W. Hennessee, State College dairy marketing specialist.

He explains that, based on the current commercial prices of 23 of its principal components, a quart of 4 per cent milk is actually worth 42 cents a quart.

Hennessee says that an Oregon State College scientist reports that protein is the biggest single value

item in milk, calculated at prices paid for proteins in other foods. The amount of protein alone in a quart of milk is worth 26½ cents. Lecithin and cephalin constitute the next biggest value—about 488 milligrams per quart, which at going prices, amounts to about four cents.

Other high values in milk include about 3.2 cents worth of calcium; 2.6 cents worth of fat; and a penny's worth of milk sugar. Probably the most expensive component of milk—on a weight basis—is vitamin B12. It figures out a 1.7 cents per quart of milk.

The other elements in a quart of milk add another three cents to its value, the scientist claims.

## State College Answers Timely Farm Questions

QUESTION: How can I keep my dairy cows cooler in summer?

ANSWER: Try to provide some sort of shade. If trees aren't handy, some type of cheap open air shelter will do. Other important tips in combating hot weather include keeping plenty of fresh, cool water available and putting the cows on a green pasture rather than a bare paddock.

Rising world population and improved levels of foreign economic activity, accompanied by rising incomes abroad and better diets, indicate a favorable outlook for export of U. S. farm products, according to USDA.

The average prices paid by North Carolina farmers for clothing on March 15, 1956, was generally above those a year ago.

Commercial hatcheries in North Carolina produced an estimated 11,641,000 chicks during March—an increase of 26 per cent over the number produced during the same month last year.

Potatoes were the only food in a list of 18 commonly used foods in the daily diet which showed less cost increase than milk during the period of 1939 to 1955.



BARE, ERODED ROADBANKS like this one in Haywood County are the target of a long-range campaign being planned by the Soil Conservation Service and the Community Development Program. In addition to being unsightly, such

roadbanks are also blamed by the ASC with being the source of much of the silt that is filling up Lake Junaluska and Waterville Lake.

(Soil Conservation Service Photo).

## County Agents' Column

### Haywood Burley Growers Off To A Good Start

Haywood County burley tobacco growers are off to a good start with their crops this season. An abundance of early, healthy plants in all sections of the county has enabled farmers to transplant their entire allotments without delay. Farmers have done an excellent job of disease prevention, and the control of insects in plant beds, and with a favorable season another high quality and high yielding crop should be produced.

W. J. McCrary of the Big Branch community is off to a good start with his Turkish tobacco demonstration.

Mr. McCrary is planning to grow one and a half acres of romatic tobacco this year, and he has been very successful in producing an abundant supply of healthy, disease-free plants.

In growing these plants, Mr. McCrary followed the same practices used in producing burley plants, and he states that the aromatic plants grow faster and will be ready to set several days before burley plants that were seeded at the same time.

Tommy Woody of the Iron Duff community is conducting a burley tobacco demonstration that should provide some valuable information as to the value of soil fumigation for nematode control.

Soil samples from this field showed a high nematode count, and the field was divided into equal plots with recommended soil fumigants used on three plots, and the other was left as a check plot without treatment. Tobacco on all plots will receive the same treatments otherwise, and will be kept separate until marketed.

Several farmers who have had trouble from nematodes will be observing this demonstration throughout the season.

## Glass Planes Expected

SAN DIEGO, Calif. (AP)—Plane designers are counting heavily on fibrous glass to enable planes to break through the heat barrier, the speed range in which plane surfaces are subject to temperatures exceeding 500 degrees, a glass company engineer says.

I. N. Smith, development engineer for a glass company, told a metals conference that the military is experimenting with a porous-skinned fibrous glass fighter plane as a means of air-cooling the skin of the plane at very high temperatures.

Already, he says, military planes are using glass for wing sections and tail pieces.

## Not So High

MUSKEGON, Mich. (AP)—Roger Sloan, 15, was pretty high on his dad's business until he tried it. Now he's not so sure.

His father, Jack, 47, is a steeplejack. He sent Roger up a 60-foot flagpole to paint the top and everything was fine until the wind started to whip the pole," says Roger.

After sliding down the pole in a hurry, Roger said: "I think I'll wait a few years."

Reports from U.S. sweet potato growers indicate that 322,800 acres will be planted in this crop in 1956.

## MR. FARMER—

WE HAVE JUST RECEIVED  
A CARLOAD OF

## Ammonium Nitrate

IT'S TIME TO BE THINKING  
ABOUT BIGGER AND BETTER

## CORN CROPS

... THE BEST WAY IS TO APPLY 100 LBS.  
OF AMMONIUM NITRATE FOR AN INCREASE  
OF 15 BUSHELS OF CORN PER ACRE.

Haywood County  
Farmers Co-op, Inc.

H. M. Dulin, Mgr.

Depot Street

Dial GL 6-8621

Hunters and fishermen have contributed to the nation's business turnover by more than five billion dollars annually, according to the U. S. Fish and Wildlife Service.

Production of milk during March for the United States amounted to over 11 million pounds—5 per cent above March 1955 and 13 per cent above the 1945-54 average for the month.

Chick production during the first two months of this year totalled over 17½ million, about 30 per cent above the number produced in the first two months of 1955.



## With BULKY-LAS and CORN-OATS

To Southern farmers, Purina offers a cost-lowering plan to make milk with average cows. That plan is "build the body... get the milk" by feeding low-cost Purina Bulky-Las with corn and oats.

Cows like corn and oats with Bulky-Las.

It's a combination that builds cow condition, helps keep cows producing steadily. For low-cost milk production and well-kept cows, feed Bulky-Las with corn and oats to your milking herd. Add Purina Cow Chow Concentrate to rations for high producers.

HEAR AND SEE PURINA'S GRAND OLE OPRY ON TV!  
(SEE US FOR TIME AND STATION)

## CLINE-BRADLEY CO.

Joe Cline — Dick Bradley

5 Points

Hazelwood

## Life is a Dream...



## in a Well-Telephoned Home

The Right Phones... In The Right Places...  
In The Right Colors

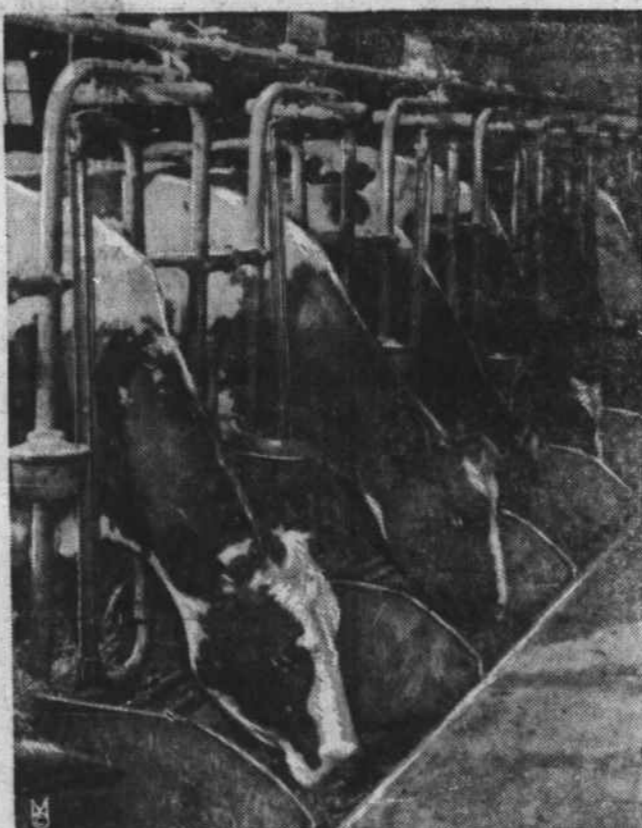
What teenager wouldn't love her very own phone! In color, too, to blend or contrast with her pretty room.

Matter of fact, the whole family lives better with telephones in rooms where they live, work, play and sleep. Phones with dials that light up in the dark... spring cords... even a volume-control phone Grandpop can turn up or down like a radio.

For suggestions to make yours a well-telephoned home—at moderate cost—call our Business Office. Or better still, come by and see our colorful display.

\*And her own separate listing in the directory, too.

Southern Bell Telephone  
AND TELEGRAPH COMPANY



MANY OF THE BEST  
MILK PRODUCING DAIRY  
HERDS OF THE COUNTY  
ARE FED

## SECURITY FEEDS

THESE DAIRYMEN HAVE FOUND THAT  
GOOD FEED PAYS OFF IN GREATER PRO-  
DUCTION AND HIGHER QUALITY MILK—  
AND IT'S ECONOMICAL, TOO!

— IT PAYS TO FEED  
SECURITY FEEDS —

WE ARE PROUD OF THE DAIRY PROGRAM HERE  
IN HAYWOOD COUNTY AND THE EXCELLENT  
MILKING RECORDS ESTABLISHED BY MANY NA-  
TIVE HAYWOOD COWS... AND WE ARE HAPPY TO  
JOIN OUR FRIENDS IN THE DAIRY BUSINESS IN  
URGING YOU, NOT ONLY TO DRINK MORE MILK  
DURING JUNE DAIRY MONTH, BUT TO...

## DRINK MORE MILK EVERY DAY!

HAYWOOD COUNTY  
FARMERS CO-OP, Inc.

DEPOT STREET

H. M. DULIN, MGR.

WAYNESVILLE

Your Headquarters For  
WHITMOYERS,  
LEDERLE,  
DR. LE GEAR'S,  
And DR. HESS,  
Laboratory Tested  
PRESCRIPTIONS  
For Livestock