

MONDAY PUBLISHED EVERY

The Mountaineer's

PUBLISHED EVERY MONDAY

Farm Review and Forecast

State College Playing Host To U.S. Co-op Convention

Rural North Carolina will become a tourist's playground for 3,000 farm cooperative members this week. The tourists, from every state, will be en route to Raleigh and the national meeting of the American Institute of Cooperation.

State College Answers Timely Farm Questions

QUESTION: What's the cheapest way to harvest corn for silage?

ANSWER: If you have enough corn, a forage harvester. In the Piedmont, with labor at \$1 an hour, a power take-off harvester is economical if you have as much as 100 tons of corn.

QUESTION: How long does it take to cool eggs to 60 degrees?

ANSWER: If you put them in a wire basket, and place in a room with a temperature of 60 degrees, it will take six to seven hours. Eggs should be at this temperature before packing into cases or cartons.

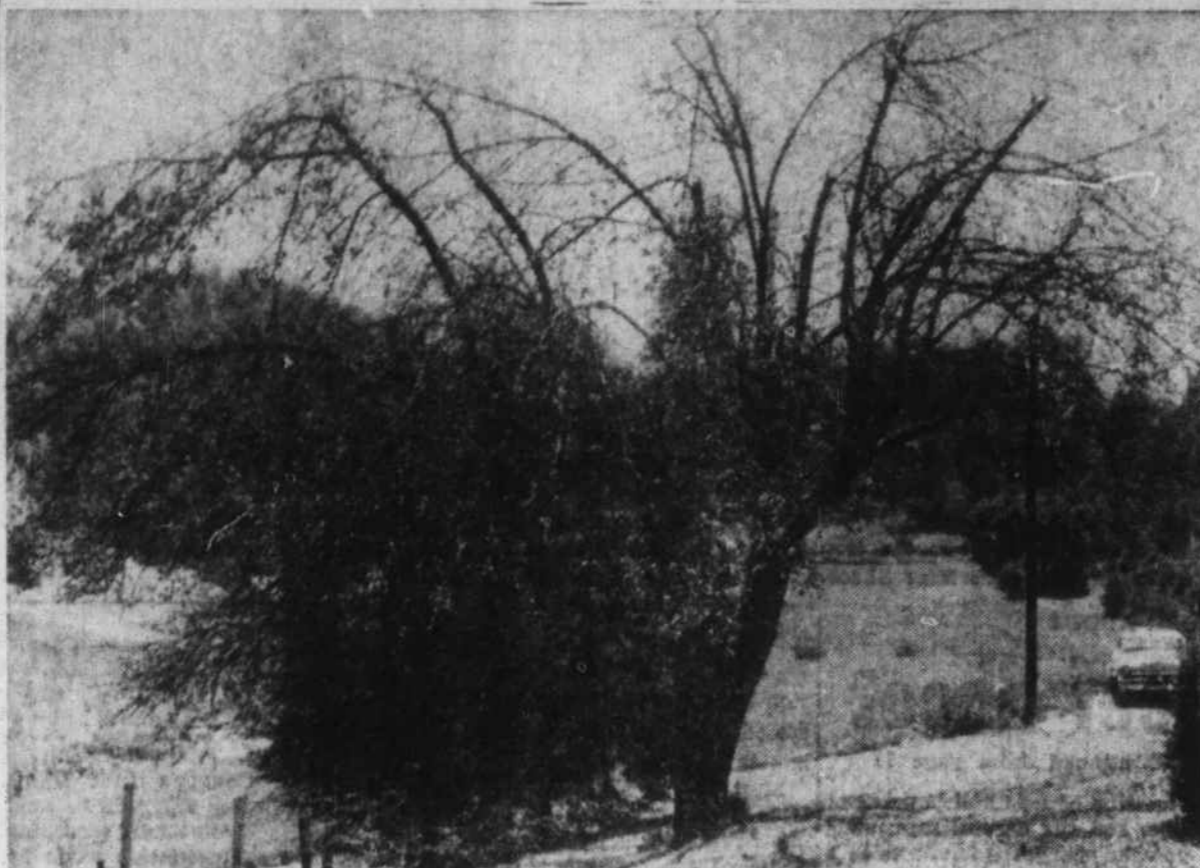
QUESTION: How important is it to top and sucker tobacco?

ANSWER: North Carolina farmers lose \$30 million a year by failing to top and sucker, says Roy Bennett, extension tobacco specialist. Topped and suckered tobacco yields 2700 pounds an acre more than tobacco not topped and suckered, tests show.

On the basis of past records, the National Safety Council says that accidents are killing an average of about 40 farm residents each day and injuring one farm person about every half-minute.

Improved grasses, better knowledge of soils, and more efficient methods for controlling insects, diseases, and weeds, make it possible for almost everyone to have a good lawn, according to USDA.

Thirty-four states grow cabbage commercially.



A ONE-TWO PUNCH of cedar rust and scab has "knocked out" this apple tree on the farm of W. J. McCarty on the Big Branch road in Crabtree community. In this instance, there's no doubt where the cedar rust came from: Mr. McCarty has red cedars in his yard—just a few feet from the apple tree.

(Mountaineer Photo).

Extremes In Weather Cause Blossom - End Tomato Rot

At this time of the year we usually have a lot of complaints that tomatoes are rotting on the lower side or blossom end of the fruit.

This condition occurs on small green fruits as well as on fruits almost ripe. This is not an organic disease but rather a physiological condition known as blossom-end rot. It appears to be caused or at least aggravated by extremes in weather conditions.

In the mountain area it will be necessary to control late blight if you wish to be successful with tomatoes. This is the same disease that attacks Irish potatoes. Use a copper spray such as tribasic copper sulphate or copper A compound and keep the plants well covered.

Don't forget to prepare for a good fall garden. If you have not already done so, sow seed as soon as possible for broccoli, cauliflower, collard and cabbage plants.

Three good fall garden crops are Chinese cabbage, kohlrabi and leaf lettuce. These crops are not found commonly enough in our fall gardens. Head lettuce does not do as well in the fall as leaf lettuce.

There is still time to plant bush snapbeans and small butterbean for a fall crop. Try Wade, Tender green, Seminol or Topcrop varieties of snapbeans and Henderson Bush or White Butterpea of the small butterbeans.

Red cherry growers receive \$20 million a year for the crop.

Canned Peaches Offer Enjoyment The Year Around

During the summer season each year, the homemaker's thoughts turn to ways she can conserve summer surplus foods for enjoyment during the non-productive months.

Fruits and vegetables always find welcome space on the pantry shelves. With the peach season well under way, Iola Pritchard, extension economist in food conservation and marketing, recommends the hot and cold pack canning method.

First of all, peaches should be ripe, but firm, and have a good flavor. In the hot pack method, they should be washed thoroughly and sorted as to color, ripeness, and size.

For easy peeling, put the peaches in a wire basket or cheese cloth and dip for a minute or two in boiling water. They should then be dipped quickly into cold water.

If the fruit is juicy, add one-half cup sugar to each quart of raw fruit and heat to boiling. For less juicy fruit, drop halves into thin to medium syrup, boiling hot, and heat through.

The hot peaches should then be packed into hot jars and covered with boiling syrup. Adjust lids and process pint and quart jars 20 minutes in boiling water bath.

In the cold pack method, the peaches are prepared the same way as hot pack up to the point of cooking. The raw fruit is packed to one-half inch of the jar top and covered with boiling liquid (thin syrup or juice), leaving one-half inch head space. Adjust lids and process pint jars 25 minutes and quart jars 35 minutes.

Tenderness In Meat May Be Inherited

There is some evidence from research with rabbits and in studies of sheep and beef cattle that tenderness in meat is an inherited quality, according to the U. S. Department of Agriculture.

To produce more lean meat of good quality and tenderness, farmers need a better understanding of what makes tenderness and desirable flavor, says USDA research scientists.

Enough research has been done to show there is no direct relation between tenderness in the meat and outside fat. But tenderness and flavor may be influenced by the particles of fat within the meat cells. It is also possible that there may be a relationship between tenderness and the size and elasticity of different muscle fibers.

Once the chemical nature of tenderness and good flavor are clearly understood, it may become possible to add these qualities to any meat.

Degree By Degrees

TOLEDO, Ohio, (AP) — Philip John Mazzotti isn't a slow learner, despite the fact he required 24 full semesters and one summer school to win his bachelor of science degree in mechanical engineering.

He had almost a straight-A average during the 15 1/2 years since he enrolled. Except for one semester in 1941 and a three-year tour of active duty with the Army Air Force during World War II, Mazzotti has been in class every semester. He's held a job, moving from draftsman to chief engineer while a student in one or two courses per semester in night school.

Be careful in using frozen foods that have accidentally thawed. If ice crystals are still in the food, refreeze it immediately. If it is completely thawed, use it immediately, or throw it away.

It has been estimated that there are more than 10,000 species of destructive insects in the United States. And the average farmer probably feels he has some of all of them.

peaches are prepared the same way as hot pack up to the point of cooking. The raw fruit is packed to one-half inch of the jar top and covered with boiling liquid (thin syrup or juice), leaving one-half inch head space. Adjust lids and process pint jars 25 minutes and quart jars 35 minutes.

N. C. State Warns Of Gyps In Field Of Pest Control

Back From Russia



PREMIER Otto Grotewohl of East Germany is shown as he returned to East Berlin after conferences with Kremlin leaders in Moscow. He immediately inspected an honor guard composed of a unit of the National People's Army. (International)

A move to take "gyps" out of the pest control business has been underway for the past year by the Structural Pest Control Commission, according to Dr. Clyde F. Smith, head of the entomology department of N. C. State College.

Smith, recently elected chairman of the commission, says that the commission has been busy setting up the framework for licensing the pest control operators in North Carolina and also in preparing rules, regulations, and minimum standards for them to follow.

Here are a few tips which will help make sure you are dealing with a reliable pest control operator:

If possible, deal with "home-folks" whom you know. Be sure he has an established headquarters and a dependable local reputation. Insist on knowing what he is going to do and obtain an estimate of the cost. If not satisfied, obtain estimates from other operators. There's no secret formula for controlling termites.

Ask him to show you the damage or the pest. If you are troubled with termites and the colony is active, soldier and worker termites will be present when you break into the damaged timbers. Also, if the damage is caused by termites and not decay, there will be mud in the damaged timbers where the termites have eaten wood away.

Beware if he wants to charge by the number of gallons of materials used. This does not give a true picture of the work that is needed to control the termites.

A recent study in the Piedmont area of North Carolina shows that on low income farms, family income could be increased only \$3.60 by adding another acre of land.

North Carolina farmers were paying slightly more for most furniture items on March 15, 1956, than they were on the same date a year earlier.

Haywood County CHECKERBOARD NEWS By Joe Cline and Dick Bradley CLINE-BRADLEY COMPANY

WHAT ABOUT SAFETY HABITS ON YOUR FARM? Just thought we'd mention in passing that July 22-28 was National Farm Safety Week. Are you planning and working to keep your farm "accident free"? Millions of dollars are lost, farmers are handicapped and lives are lost through carelessness around animals and machinery every year.

Nobody Gains By the Roosters Seems to us that many farm flocks could stand a good culling about now. Roosters are strictly a liability in flocks of growing pullets and in the laying house. And they'll eat a man's share of feed, so let's cut them. They'll help buy feed for the "working girls."

Prepare House And Sow Now For Farrowing Expecting pigs? It's high time you cleaned the farrowing house and the sow. Good hogmen don't need to be told how important it is to have clean, dry farrowing quarters. They rake out all dirt and litter, scrub and disinfect waterers and feeding equipment, then sprinkle disinfecting solution over the floors, walls and all.

CLINE-BRADLEY CO. Joe Cline - Dick Bradley 5 Points Hazelwood

Bookmobile Schedule

Table with 2 columns: Location and Time. Tuesday, July 31 MORNING STAR-WEST CANTON

Table with 2 columns: Location and Time. Friday, Aug. 3 FINES CREEK-PANTHER CREEK

The number of dairy cows in the United States declined approximately 300,000 head, or a little more than 1 per cent, in 1955.

Around 1,194,497 girls and 961,455 boys belong to 4-H Clubs across the nation, according to latest tabulations in Washington.

Farmers who have adequate storage can obtain price supports on grain and soybeans this year.

Red cherry growers receive \$20 million a year for the crop.

Noah Numskull advertisement featuring a cartoon character and text about bathing suits and soap.

Haywood Home Building & Loan Association advertisement with illustrations of people and a mailbox, and text about dividends and services.