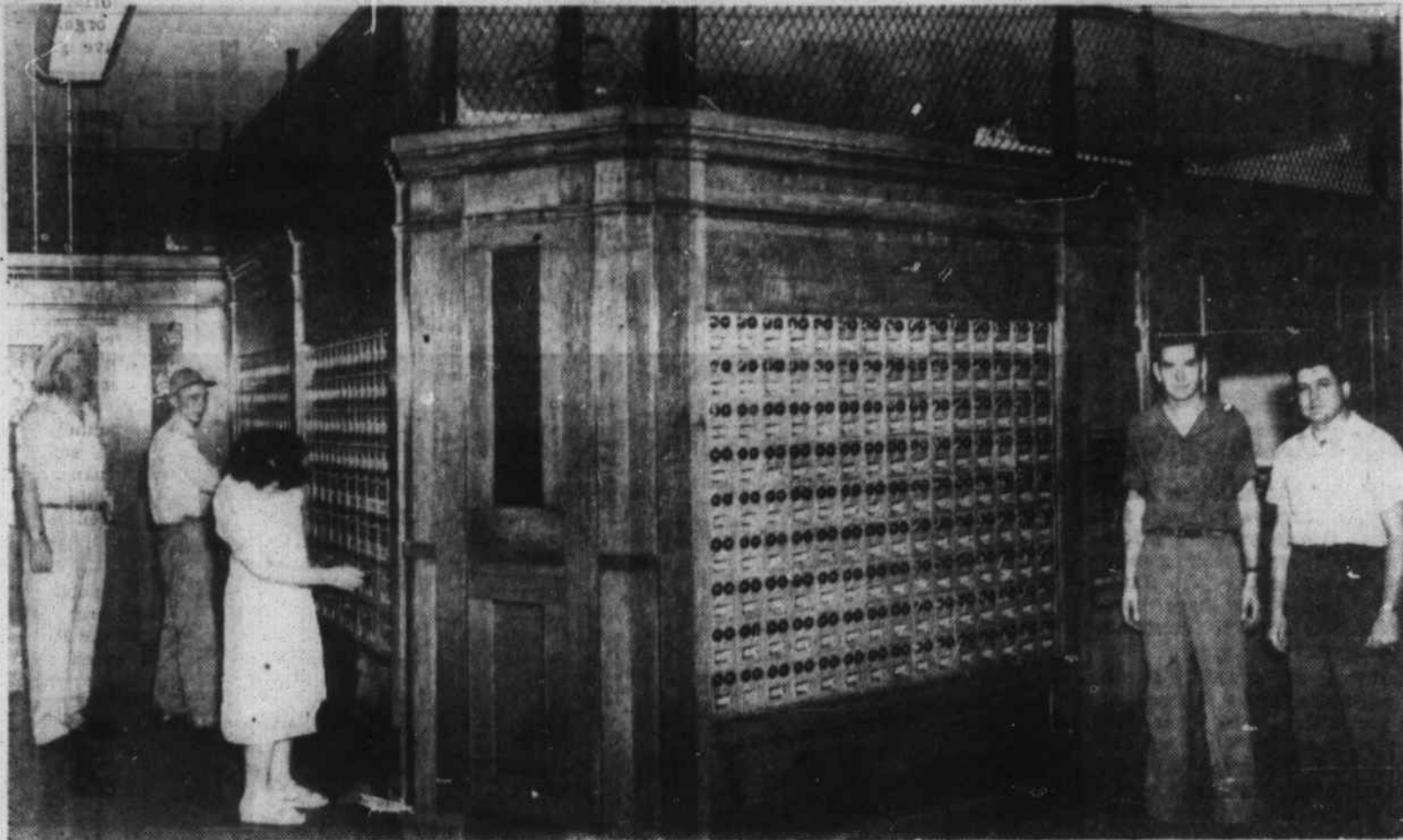


Hazelwood Post Office Has Grown Steadily



INSTALLATION of the modern Hazelwood Post Office, which now enjoys a new home, brought about by civic interest of the community as a town improvement. Shown here are the several sections of boxes for patrons of the office.

ity as a town improvement. Shown here are the several sections of boxes for patrons of the office.

In 30 years, customers of Carolina Power and Light Company's Hazelwood office have increased from 200 to 3600.

Church Of God Makes Additions To Buildings

The Church of God in Hazelwood recently purchased new living room furniture for the church parsonage, plans to install a new hardwood floor in the auditorium and to purchase new interior decorations.

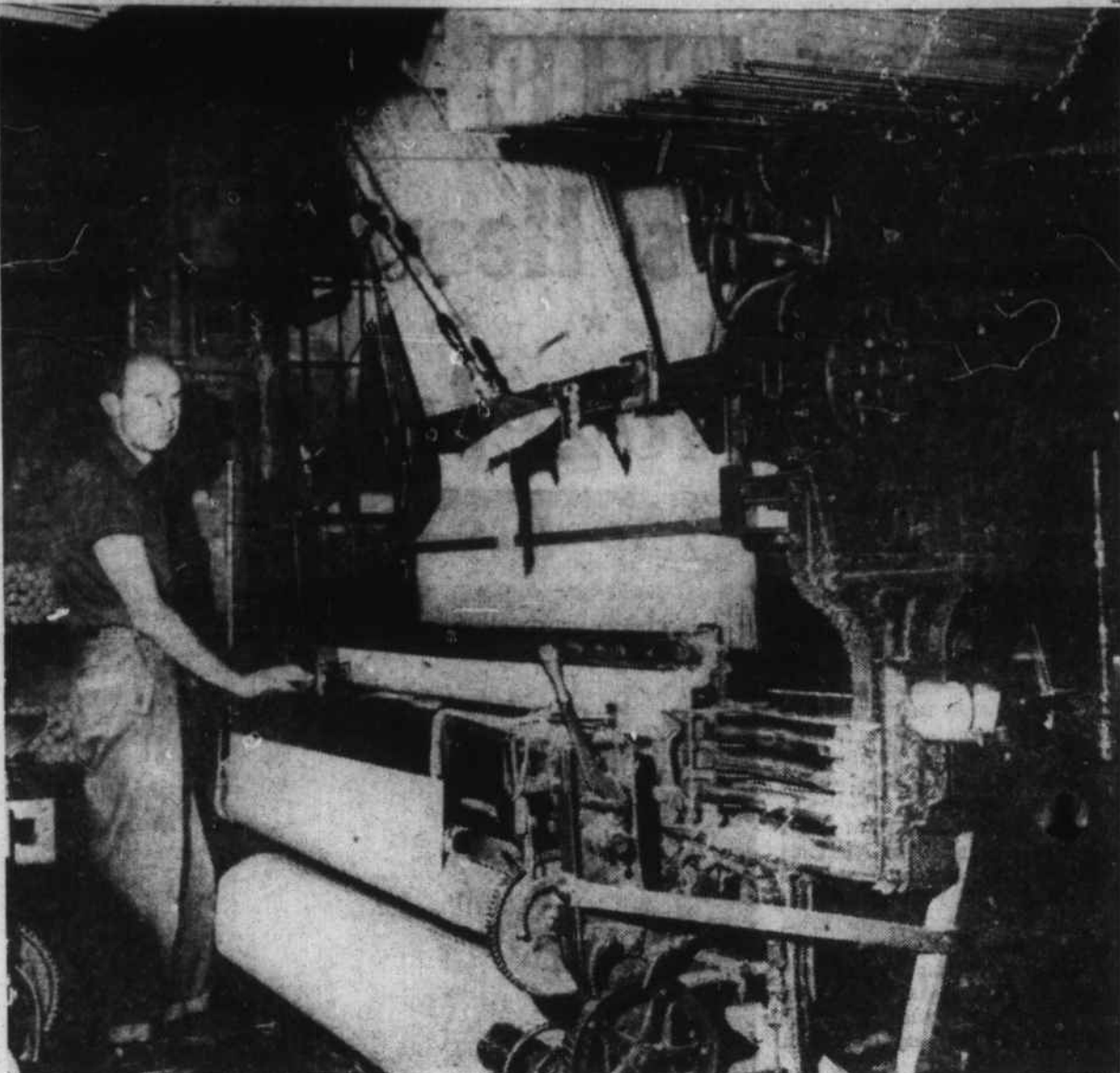
Remodeling work on the Youth Center also is scheduled.

A revival meeting will be conducted by the Rev. A. L. Leonhardt, Jr. of Canton, beginning the first week in November.

Other evangelists slated to come to the Hazelwood Church of God are: the Rev. George D. Voorhis of Brooklyn, N. Y., the Rev. L. J. Stone of Walterboro, S. C., and the Rev. Alex Dunn of Laurinburg, N. C.

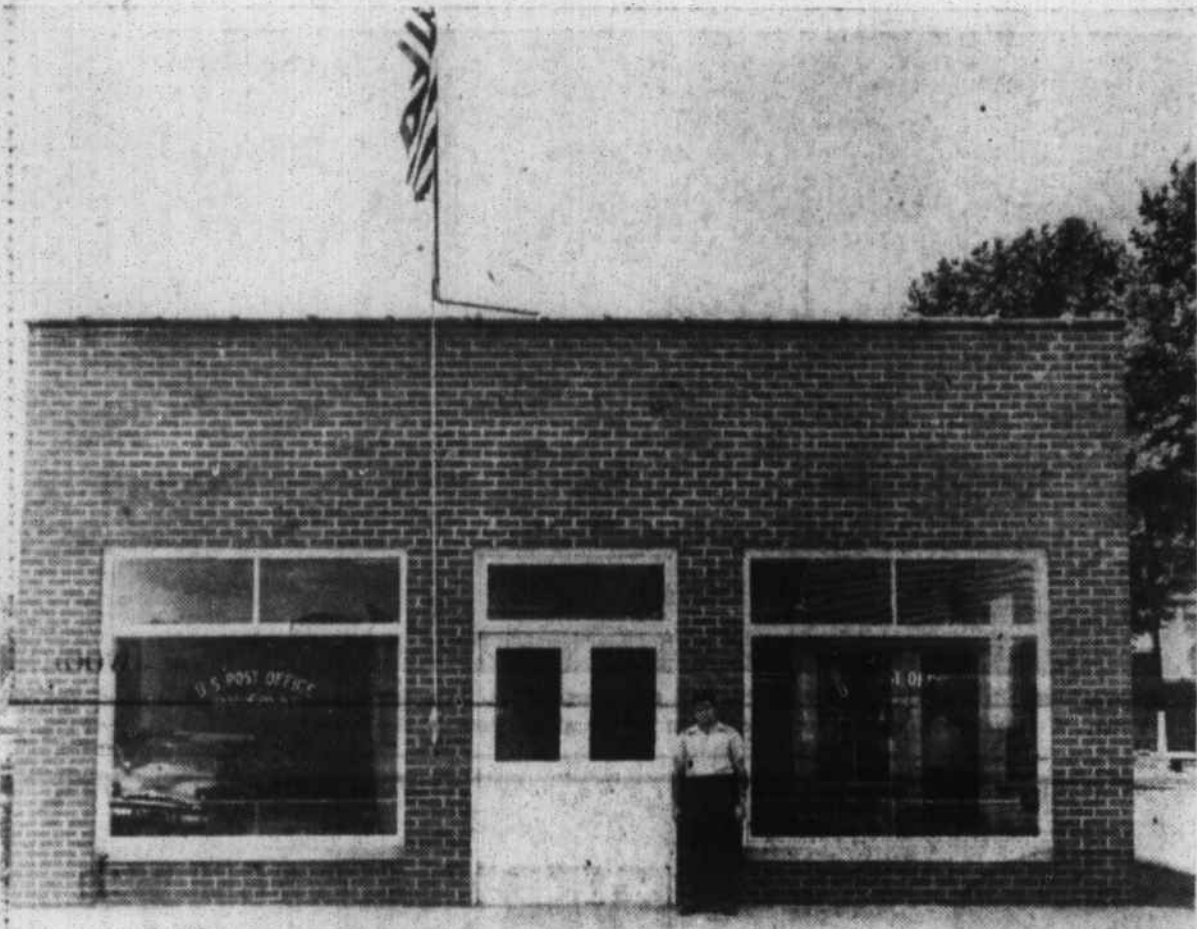
The Rev. W. P. Gosnell, Jr., is pastor of the Church of God.

Unagusta Manufacturing Company's labor turnover averages less than one per cent a year—roughly, two people.



BREAKING NO SPEED LAWS is this loom at Royle and Pilkington Co., Inc., as it weaves this upholstery material at about two yards an hour. The design is controlled by a punched cardboard

pattern, much like the old player piano rolls. Some fabrics have as many as 10,240 threads to a 54-inch width.



THE HAZELWOOD Post Office on Main Street is a first-class office, handling a large volume of mail daily. Postmaster Thurman Smith is shown in front of the modern brick building.

The Hazelwood Post Office was made an independent Post Office in April of 1945.

During the past 11 years, there has been a tremendous growth in all the departments in this office. The first Postmaster serving the office was Mrs. Wilma Hoyle Lucas. The present Postmaster, Thurman R. Smith took office in July 1947.

At the present time, there is one full time clerk and two part time clerks. The present personnel of the office is John C. Sum-

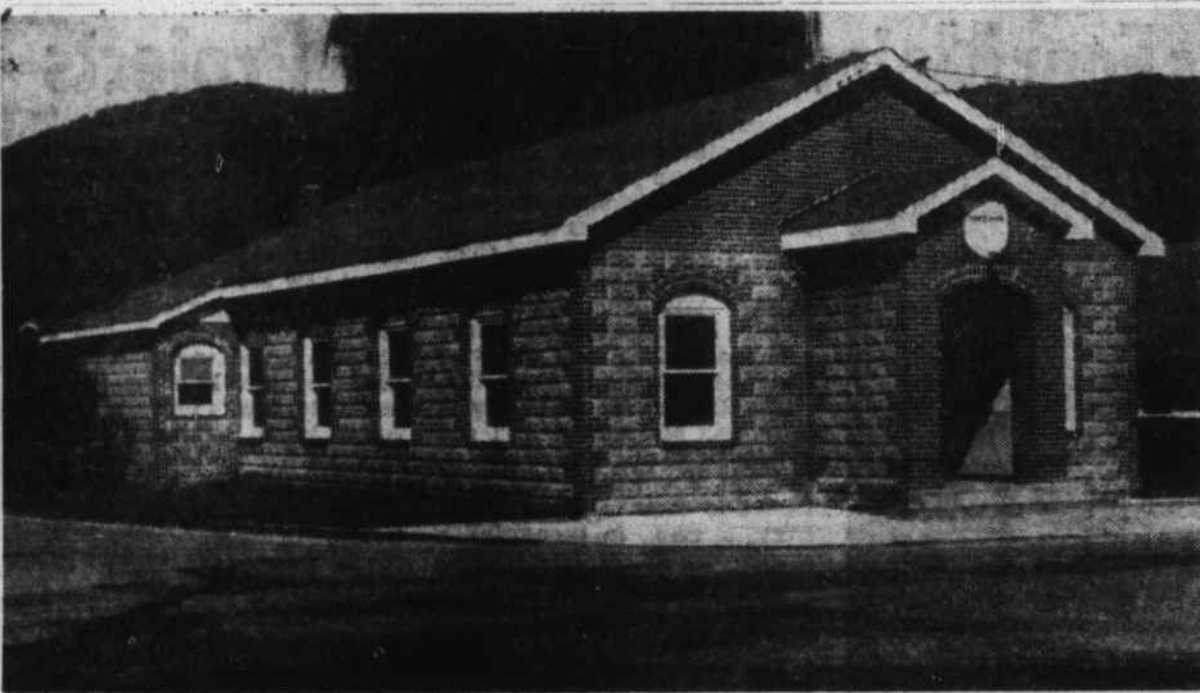
merrow, Thomas H. Davis and Mrs. Carroll Whitner. The major revenue is derived from the industrial plants namely: Walco Shoe Corp., Unagusta, Mfg. Corp., Royle & Pilkington Co., and the A. C. Lawrence Leather Co.

It is estimated that at present the office is handling approximately 30,000 pieces of first class mail per month. This office has held the rating of first class since 1951.

Receipts for the first six months of 1956 were \$20,592.57. This

was a decrease from \$28,587.14 for the same period of 1955. It represents a decrease, which is due mainly from the law which restricts the size and weight of parcel post mailed at one First Class Office to another First Class Office.

It is interesting to note that while the office showed only an 11.7% decrease in sale of stamps and other miscellaneous items, it showed a 41.2% decrease in metered mail which is used primarily for parcel post. The re-



THE CHURCH OF GOD IN HAZELWOOD installed new pews during the year. Its new pastor, the Rev. W. R. Gosnell, plans a series of revivals as his first project.



THE REV. W. P. GOSNELL, pastor of the Hazelwood Church of God.

ceipts for the first six months of 1946, which was 10 years ago were \$2,378.38. This amounts to a substantial increase over the 10 year period.

In the money order department the increase has been gradual over the past 10 years. In 1946 the money order business amounted to \$30,295.68 with fees of \$282.52. This was for the first 6 months of the year. In the period of January to June 1956 money orders issued totaled \$115,502.58 with fees of \$1,256.95.

There has been a general decrease in the work hours allotted to the office by the Post Office Department in the past two years. The office had an 8.1% decrease in work hours for the first six months of this year over the same period of last year. At the present figures the office is averaging \$11.00 in receipts for each man hour used. While actual work hours have been curtailed, no service to the public has been curtailed.

The Post Office is opened at 8 a.m. six days per week and closes at 5:30 p.m. daily except Saturday. On Saturday it closes at 12:30 p.m.

The money order window opens at 9:00 a.m. and closes at 5:30 p.m. daily.

There is no window service on Sunday, though the mail is put into the boxes at 11 a.m.

It is anticipated that the office will continue to hold the first class rating for the coming year.

The 30-member Hazelwood Seventh-day Adventist Church has given over \$1000 in offerings this year.

Royle & Pilkington Is A Leader In Tapestry Field

Enough upholstery fabric is woven every year at Royle & Pilkington Company, Inc., to pave the highway from Hazelwood to Charlotte. The firm manufactures approximately 350,000 yards annually.

The finished product is distributed all over the United States, up into Canada and down all the way to South America. There is little difference in taste of the buyers in such far-apart regions, according to executives of the plant. What appeals to the Latin American eye may be just as popular in the remote north of Canada.

Most used yarns are nylon, Bemberg, viscose rayon and a mixture of fine and coarse combed cotton. The company's 85 employees work amid a decora-

tor's dream of colors, as literally hundreds of different shades must be kept on hand to fill current orders.

A company executive noted that the present trend in the East is for subdued colors, pastel shades going into the heavier tones, with a smattering of metal. In pattern, fabric with texture interest leads, with such variations as embossed designs, tone-on-tone and thick-and-thin.

Weaving a 54-inch upholstery fabric is a time-consuming business, even though a loom can pick up 105 threads a minute. Average speed is three yards an hour, although a few fabrics can be woven at six.

Royle & Pilkington's employees receive paid vacations and holidays, as well as hospitalization.

We've Got A Good Town...
But, Let's Make It Better!

By Working Together

We Can Win The

FINER CAROLINA CONTEST

And The

\$1000⁰⁰ CASH PRIZE

HAZELWOOD SERVICE STATION

Main Street

Hazelwood



LET'S ALL
SUPPORT
THE
COMMITTEE
IN THE

FINER CAROLINA
PROGRAM
AND
WIN FIRST PLACE

WE KNOW THAT HAZELWOOD
IS A GOOD TOWN, BUT
LET'S MAKE IT EVEN BETTER!

ROYLE & PILKINGTON CO., Inc.

B. E. COLKITT, MGR.