

MORE ABOUT Vacation

(Continued from page 1)

den Monument Works in her hometown of 18,000 population. Other industries in Camden, county seat of Ouachita County, are a paper mill and a naval ordnance plant.

"Pine trees," she added, "are our major product."

In addition to winning a week's free vacation, Miss Gordon also won 40 gallons of gas from a Camden service station.

For the Gordons, their trip to the Great Smokies and Blue Ridge of North Carolina represents a return trip, but it was the first visit here for Miss Lide.

Miss Gordon said she and her mother came to this region six years ago, but explained that she has seen many things on this trip she never saw before.

While in the Waynesville area, her group visited the Haywood courthouse, the Highlanders office, Lake Junaluska, the Mountain Experiment Station, and the Waynesville Country Club. She also had plans for trips to Fontana Village, Asheville and Hendersonville before returning home this Tuesday.

If possible, Miss Gordon said, she will return here for another visit next summer.

At a stop at The Mountaineer office Thursday, the contest winner said: "People here have been treating us wonderfully, and I feel like the Queen of the Smokies."

Accompanying the Arkansas residents to Waynesville were Barney Rentz and Miss Margie Estes of the Cherokee Historical Society. During their brief stay in this area, the group was escorted by Mrs. Edith Alley Empson, secretary of the WNC Highlanders.

Mrs. Noland To Conduct Craft Classes For Adults

An adult class on Pastel Painting of Pictures and Copper Enameling of Jewelry will be conducted by Mrs. Glenn Noland for women in the Crabtree-Iron Duff Communities. The class will be held two afternoons each week.

Those interested in enrolling are requested to meet in the Home Economics Department of the Crabtree-Iron Duff school Tuesday, October 23, at 2:45 p.m. Definite dates and hours for the class will be decided at this time.



BILLY HEATHERLY took top place in the flag race Saturday at the All-Western Horse Show. Here Billy is shown riding his horse Flicker around one of the flags while he carries the other in his hand. Make no doubt out of it—Billy and

Flicker were covering ground. This picture was made at 250th part of a second and that is pretty fast, yet the horse is shown moving fast.

(Mountaineer Photo.)

Girl Scouts Plan Hike To Alum Cave

All Girl Scouts, their mothers, and leaders are invited to go on a special hike which has been arranged by Mrs. Tania Rollman and Mrs. Joe Liner for Saturday, October 27.

The hike, which will be led by a Park Ranger, will be two miles into Alum Cave from the parking area on the Newfound Highway.

The hikers will meet at the Waynesville High School at 7:30 a.m., and transportation will be furnished. Nosebag lunches will be taken.

The first commercial television station in Australia is scheduled to begin regular transmission in September.

Lots Of Action Seen In All-Western Horse Show

MORE ABOUT Burley

(Continued from Page 1)

the grading and sorting of your crop, or if you would like to see a part of your crop stripped and sorted, please bring along four or five stalks to the demonstration and the government grader will be glad to assist you.

General Franco, ruler of Spain, is a fisherman. He once took a 710-pound tuna off the coast of Galicia.

Those attending the All-Western Horse show here Saturday afternoon saw lots of action, as horses and riders staged an unusual 10-event performance.

George Evans was manager and judge of the show, which was sponsored by the Smoky Mountain Trail Riders Association.

The winners were announced as follows:

Western Parade—1st place, Golden Sunshine, owned and ridden by Kenneth Treadway.

Pony Lead Line—1st place, Little Lady, owned by Joe Reinertson, ridden by Daryl Gibson.

Western Pleasure (Ladies)—1st place, Lanta, owned by Kenneth Treadway, ridden by Nina Duncan.

Flag Race — 1st place, Flicker, owned and ridden by Billy Heatherly.

Musical Chairs—1st place, Lanta, owned and ridden by Kenneth Treadway.

Pony Parade—1st place, Sunstar, owned by George E. Evans, ridden by Johnny Rogers.

Mule Race — 1st place, Clara, owned by Thomas L. Moody, ridden by Mike Gribble.

Pet Pony—1st place, Little Lady, owned by Joe Reinertson, ridden by Glenda Morgan.

Pole Bending—1st place, Lanta, owned and ridden by Kenneth Treadway.

Fanny Seat — 1st place, Flicker, owned and ridden by Billy Heatherly.

"We want to thank all the people in helping to make this All Western Show a success," Evans said.

MORE ABOUT CDP

(Continued from page 1)

5. Community with largest percentage of families covered by hospital insurance.

6. Community with largest percentage of families producing one or more acres of corn with a yield of 100 bushels or more (including silage corn).

7. Community with largest percentage of families showing an increase in income from new sources.

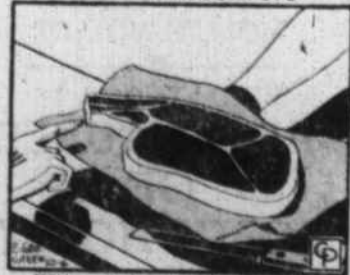
8. Community with largest percentage of families making home improvements.

Once again this year, the communities will be judged on the Danish system, with each of the competing areas receiving blue, red, or white ribbons. Each community in a ribbon class will get the same amount of money except for the top winners in the blue ribbon group, which will win \$25 more than others in the class.

Drawer Reflex

SAN DIEGO, Calif. (AP) — A burglar used a physician's reflex hammer — the little one he taps your knee with to make your leg bounce — at the office of Dr. Jacob Wenig. The thief tapped the desk drawer. It bounced open and he took the \$200 inside.

Wife Preservers



When you buy a portershouse steaks, note the meat tenderizer to grind the full meat as it is less tender than the rest of the meat.

MORE ABOUT REA

(Continued from page 1)

construction and conversion of these lines, which will cost approximately \$20,000,000, will be performed by the cooperative, and is not included in the contract awarded to Skyline Construction Co., the REA manager pointed out.

The contract between the cooperative and Skyline is subject to approval by the Rural Electrification Administration, and this approval is expected within two or three weeks. The contractor will start immediately upon approval of the contract by REA, and the work is scheduled for completion within 60 working days from that date, Mr. Sheffield said.

The cooperative has 20 men engaged in clearing the right of way, and this work will be completed within about five weeks, he added.

Other work included in the \$600,000 expansion program, according to Mr. Sheffield, is the construction of 4 miles of 66 kv transmission line between Clyde and Bethel, the erection of a 1500 kw substation at Bethel, and the conversion of existing distribution lines from single phase to three phase in Buncombe and Haywood Counties. This work, is not included in the above contract, but will be built later when the load on the lines necessitates the additional facilities.

Mr. Sheffield said that the cooperative now serves 4,900 members along 925 miles of line in parts of seven counties: Buncombe, Haywood, Jackson, Transylvania, and Macon in North Carolina, Rabun County, Ga., and Oconee County, S. C. Usage of electricity by the members of the cooperative is increasing at a rapid pace as additional equipment and appliances are being added daily. Monthly average kilowatt hours per member of the Cooperative has now reached 215 kilowatt hours. Usage is expected to be around 450 kilowatt hours per member per month within the next 10 years, which is more than double the present usage.

MORE ABOUT Polio

(Continued from Page 1)

said, but only 1,049 persons have had the complete series of three.

Ranking lowest in participation in the polio-inoculation program are teenagers from 15 through 19 years of age, the health officer disclosed.

Polio shots are given free each Wednesday at the Health Center on the Asheville road.

Miss Dorothy Whisenhunt, custodian of records at the Health Department, said that 4,503 persons have had the first Saik polio shot, 3,669 have had two, and 1,049 have had three.

Of this total of 9,221, she explained, 2,269 have been in the under five years of age group; 2,153 have been in the 5-9 group; 2,770 have been in the 10-14 age group, 1,738 have been in the 15-19 group, and 291 have been given to expectant mothers.

Miss Whisenhunt said that Haywood County has had two polio cases this year — both occurring in August. The victims were Debra Lynn Smith, eight months old, of Route 4, Waynesville, who is still confined to the Asheville Orthopedic Home at Biltmore with partial paralysis, and Mrs. Maude Hannah, 20, of Waynesville, who has suffered no paralysis and is now at home.

MORE ABOUT 4-H Club

(Continued from page 1)

stock team was Ashby Cathey of Bethel.

Also at the State Fair last week were three 4-H Club burley tobacco judging teams—from Fines Creek, Waynesville, and Clyde.

On the Fines Creek team were Barbara Ferguson, Gail Bradshaw, Arnold Phillips, and Freddy Rathbone. On the WTHS team were Virgil Ford, Gene McGaha, and James Hannah. Making up the Clyde team were John McCracken, Clifford Underwood, and Keith Cathey.

Accompanying the 4-H members to Raleigh were Cecil Brown and Fred Boss, assistant county farm agents.

Mr. Brown explained that the results of the tobacco judging contest will not be announced for two weeks.

LAFF-A-DAY



"You have just answered a question that will get you 32 years. Would you like to try for 64?"



KENNETH TREADWAY, riding Golden Sunshine, took first place in the Western Parade Class of the All-Western Horse Show staged here Saturday. (Mountaineer Photo.)

GETTING OUT THE VOTE!



S. K. Waters, President of Crown Central Petroleum Corporation, pins Republican Elephant lapel button on Republican President Dwight D. Eisenhower.



DITTO OF ABOVE... but it's a Democratic Donkey lapel button S. K. Waters has pinned on Democratic Presidential Candidate Adlai E. Stevenson.

Crown Service Stations are distributing FREE lapel pins for both parties in a special drive to get out the vote!

VOTE AS YOU PLEASE—BUT VOTE!



WHAT

Industry Brings

MOST communities, in their own way, have attractions for some kind of industry. When a new industry employing 135 people begins operating in a community, according to The United States Chamber of Commerce, it can mean:

\$787,000 more personal income per year, \$480,000 more retail sales, \$360,000 more bank deposits, 395 more people, 232 more workers employed, 146 more households, 68 more school children.

It can also mean job opportunities at home for graduates of our colleges and high schools who are now leaving the State. What kind of industry is best suited to your own community at this time? It might be a large, highly technical operation. It might be a supplier to other industry. It could be a handicraft operation, or tourist attraction.

Ask for the free booklet on Community Organization for Industrial Development. It lists scores of ideas for products which may be manufactured to advantage in various communities of the State.

STATE OF NORTH CAROLINA DEPARTMENT OF CONSERVATION AND DEVELOPMENT



This is another in the series of advertisements published by this newspaper, a member of the North Carolina Press Association, as a public service in the interest of the State's industrial development program.