

Belts Tell The Story Of New Styles

By DOROTHY ROE
Associated Press Women's Editor

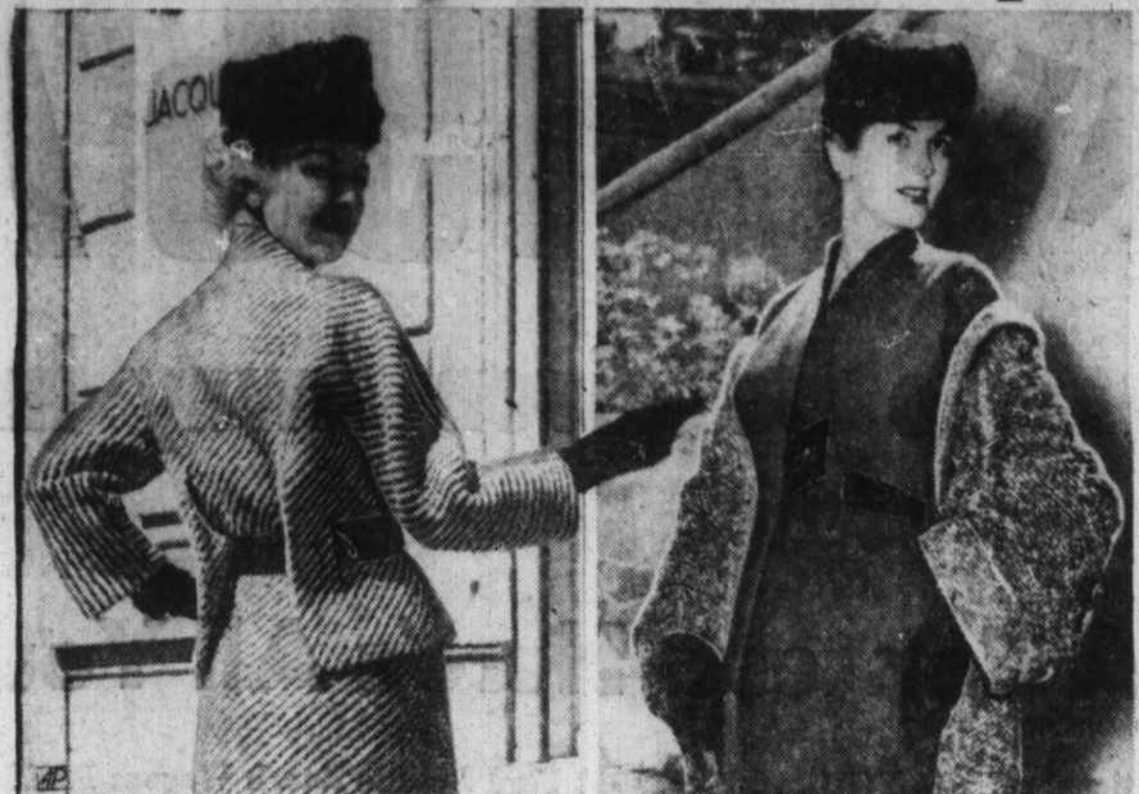
Belts are back in the fashion picture, after several beltless years. And now that they're back, they are the accents of the various new silhouettes. Their placement defines the fashion. Worn just under the bust, a belt proclaims an Empire silhouette. Worn around the hips, it may suggest the bygone flapper look. Worn at the waistline, where it started, it defines a shirtwaist dress or a two-piece dress or a blouse and skirt.

Designers on both sides of the Atlantic are using belts in many ways this season. There are wide, dramatic belts with jeweled buckles used on some of the newest dinner gowns. These accent the midriff, reaching from normal waistline almost to the bustline, giving an Empire effect.

Contoured belts narrow in front, wide and dipped in back, give a new line to sheath dresses. Narrow belts sometimes are used just beneath the bust of a slim dress, for a new effect.

With the popular bloused silhouette, the belt is worn at the natural waistline, and it may be wide, narrow, in leather or satin, its color matching or contrasting with the dress.

Belted suits are important this year, with the belts worn every-



NEW TRICKS WITH BELTS . . . The bulky tweed dress at left achieves the look of a suit with pleum panels and a black calf belt anchored through slots in the back panels. At right is an ensemble of gray tweed coat and green wool sheath dress with leather belt slotted through the dress.

where from just below the shoulder blades to just above the hips. Belts may be of fur or jewels, leather or silk, in every width and ever color—but whatever their style, belts are back with a bang.

The Shape Of Things To Come?



PROPHETIC NOTE . . . This is the new skirt length aired in recent Paris fall collections on a trial-balloon basis. The late-day costume pictured is by Jacques Heim, made of a soft flanne lusing of orlon and wool in deep aqua. Its slim, tapered skirt is strictly in the mood of 1912, while the short, wide-collared jacket also reflects the soft femininity typical of the "second decade."

Purchase Plants Or Seeds Only From Reliable Firm

By M. E. GARDNER
N. C. State College

Be careful what you buy and where you buy it. This is the time of the year when you may be visited by someone selling nursery stock, fruit trees and grape vines, shrubbery and trees for landscaping your home. Some of these people are honestly ignorant of what they are doing, while others may make offers which they know they cannot carry out.

In either case, you are left holding the bag and faced with keen disappointment after it is too late to do anything about it. I could tell you some stories in this connection which you would hardly believe.

Buy only from a reliable nurseryman or seedsman, and he will

back up any claims made by his representatives. It has been my privilege to work with the nurserymen of North Carolina for many years, and I have found the members of the North Carolina Association to be reputable and anxious to serve their customers honestly and well. In almost every case, cheap nursery stock is, in the long run, the most expensive you can buy.

What I have said about the nurserymen is also true for the members of the North Carolina Seedsmen's Association. So many things can happen in the production, cleaning, classification and seed that he must be always on the alert to see that you get varieties which are true to name and of good germinating quality.

State College Answers Timely Farm Questions

QUESTION: Are there important differences in dairy feeds?

ANSWER: Yes. Look at the feed tag when buying feed and compare it with others. Although all feeds will not have the total energy value listed as total digestible nutrients (TDN) or terms of net energy, you will find the chemical analysis valuable for comparison of feed values. Give particular attention first to the fiber content of the feed, for the higher it is the lower the amount of available energy for milk production. The better feeds have six to eight per cent fiber content, whereas the cheaper mixtures may run as high as 12 to 15 per cent fiber. For every additional one per cent of fiber in the feed, the available energy drops

Woodmen Circle Sets Meeting For Tonight

The Supreme Forest Woodmen Circle, Applegate No. 279, will meet tonight at 7:30 o'clock in the WOW hall.

Plans for a Christmas party and projects for needy families will be discussed.

Since this will be the last meeting before the Christmas season, Mrs. George Milner, president, requests that all members be present.

Births

New arrivals at the Haywood County Hospital include:

A daughter to Mr. and Mrs. D. W. Griffin of Candler, Route 3, on November 15.

A son to Mr. and Mrs. Sam Gentry of Waynesville on November 17.

A son to Mr. and Mrs. Paul Soesbee of Canton on November 17.

A son to Mr. and Mrs. Howard Cook of Canton on November 18.

A son to Mr. and Mrs. M. R. Whisenbunt of Waynesville on November 19.

MORE ROOM

If you're planning to build a utility closet or cabinet to hold household cleaning equipment, consider peg-board. Walls constructed of it have a maze of little holes to hold many things in limited space.

Check your camellias and other evergreens for scale insects. If found, spray with oil being sure that you cover the insects thoroughly. Watch out for red spiders on azalea and Japanese holly. Spray thoroughly with malathion for control, giving special attention to the underside of the leaves.

QUESTION: Should house plants be given fresh air?

ANSWER: Yes, but keep the plants out of drafts. Don't place them in front of fans or over radiators.

Just a reminder that it is bulb planting time. If you live in the mountains this job should be done without delay. Tulips, hyacinths, daffodils, narcissus, and crocus will make spring more pleasant and colorful in your garden. Tulips should be planted six inches deep and spaced six inches apart; hyacinth, daffodil and narcissus five inches deep and six inches apart; and crocus three inches deep and four inches apart. Prepare your soil well before planting.

KURT GANS — "The Store of Birthstone Rings"



Happy Birthday to You

A DELICIOUS WHITMAN BAKERY BIRTHDAY CAKE

FREE WITH THE PURCHASE OF ANY

BIRTHSTONE RING

REGARDLESS OF PRICE



Between now and Christmas, we will give a certificate for a birthday cake from Whitman's Bakery. The certificate is good for one year. A complete selection of birthstone rings for men, women and children.



Register Now For The \$1,000.00 In Diamonds We Are Giving FREE

Your Complete Christmas Gift Store

Kurt Gans

PAY A LITTLE AT A TIME

Western North Carolina's Leading Jeweler



YOUR CHOICE-ANY TOY!

88¢

USUALLY \$1 to \$2

Check These TOYS At These Low Prices — Wonderful Collection

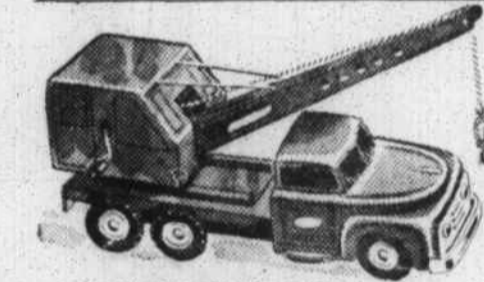
Another lucky purchase! Action-filled toys to delight the hearts of the most fun-loving boys and girls you know! Here's your chance to stock up for rainy-day playtime, for special-occasion gifts! Imagine, any toy — just 88¢!



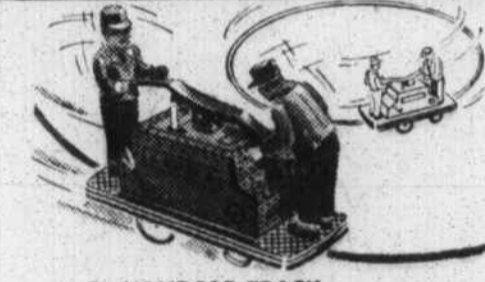
A. 13-PC. CHINA TEA SET
Everything she'll need to have a tea party for 4! Includes teapot, sugar, creamer, cups, saucers. Bluebird-design ton lustreware. **88¢**



B. WASHING MACHINE
Just like Mommy's! Wind spring at side, turn switch — agitator swishes water back and forth! Rubber drain pipe really works! **88¢**



C. HEAVY DUTY CRANE
It works! Nothing to wind — just push along floor. Hand-wind boom and lift, removable crane. Thick rubber tires like the real trucks! **88¢**



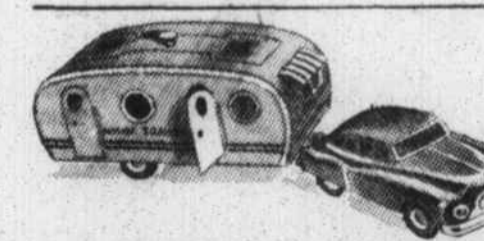
D. HANDCAR TRACK
Wind the key, place on rubber track — hand car goes round and round! Plenty of motion that should please any little boy you know! **88¢**



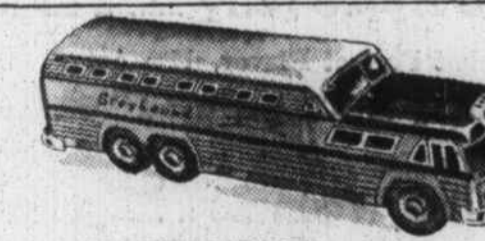
E. FRICTION-MOTOR TRUCKS
Cattle carrier, sand and gravel truck, auto with towing truck, gasoline carrier. Nothing to wind — push along floor. It goes! **88¢**



F. 8-KEY CONCERT PIANO
Has pleasing chime-tone, numbered keys to make it easy to learn. Bright red enamel finish. Great fun for any little boy or girl! **88¢**



G. FRICTION CAR, TRAILER
Two toys in one! Silvery streamlined trailer has doors that open, awnings that raise. Drawn by bright red sedan. Nothing to wind! **88¢**



H. SCENIC CRUISER
Greyhound's newest double-decker bus! Authentic colors. Powerful friction motor — no winding needed. And big size too — 11" long! **88¢**



J. DOUBLE VAN EXPRESS
11" long from the bright red cab to the big loading van in the back! Lots to do — doors open in both vans! Powerful friction motor. **88¢**



K. NEW CAR CARRIER
Has its own loading ramp! Comes complete with 2 scale-model new cars! Shining enamel finish steel! Nothing to wind — push on floor. **88¢**



L. BATTERY OPERATED CAR
Scale model of the popular Mercedes Benz foreign car! Long, low — and speedy! Runs forward and backward. Flashlight battery. **88¢**



M. STREAMLINED MG RACER
Overland racer has "7" on the side, big rubber tires. Double plastic windshields protect 'drivers.' Bright paint job, plenty of 'chrome.' **88¢**

SHOP BELK'S for better selections, better buys! BUY BELK'S for certified better values!

BE WISE — BUY WISE — ECONOMIZE

STOP AND SAVE AT SMOKY MTN. SELF SERVICE GROCERY

- Ocean Spray 16 Oz. Can **CRANBERRY SAUCE 2 for 35¢**
- Swansdown **CAKE MIXES 2 Pkgs 49¢**
- No. 1 Golden **SWEET POTATOES 4 lbs 29¢**
- Large Juicy Florida **ORANGES Doz 38¢**
- Old Hickory Pure Pork **SAUSAGE lb 29¢**
- Stokely's No. 2 1/2 Can **PUMPKIN 25¢**

- | | |
|--|--|
| Italian CHESTNUTS 19¢ lb | Baby Emerald WALNUTS 49¢ lb |
| Fancy Washed BRAZIL NUTS 49¢ lb | Get The Ingredients For FRUIT CAKES HERE! |
| J.F.G. Special COFFEE 99¢ lb | Snowdrift SHORTENING 3 lbs 87¢ |

OUR PRODUCE IS THE BEST TO BE HAD!
IT'S STRAIGHT FROM THE ATLANTA STATE MARKET

The Management And Staff Of The Smoky Mtn. Self-Service Grocery Wish To Take This Opportunity To Express To All A **HAPPY THANKSGIVING**

THE SMOKY MTN. SELF SERVICE GROCERY

Balsam Rd. Dial GL 6-6565
Elmer Hendrix, Owner