

4 W.N.C. Counties Give Stevenson Majority Vote, Haywood Is One Of Them

Haywood was one of four counties west of Greensboro and Charlotte to remain in the "white" when Ed Rankin, private secretary to Governor Hodges had a map of North Carolina colored to show how voting went in the presidential election.

The 57 counties which went to Adlai Stevenson on November 6 were left in white. The 43 which cast a majority of their votes for President Eisenhower were colored red.

When the map was completed, it was solid red from Alamance County westward, with the exception of Jackson, Haywood, Yancey and Cleveland counties and, along southern border, Union, Anson and Richmond. At the border, the color changed to red at Mecklenburg.

From Alamance (which was red) eastward, there was a solid block of white counties with two exceptions. Way up in the northeast, Dare County showed red. Way down in the southeast, Brunswick was in red, too, although Ike's margin there was only two votes—3,299 to 3,297.

The mapping was done after the official vote canvass of the State Board of Elections had been announced. The official figures gave

Howard Hicks Promoted By Army To Sergeant

AUGSBURG, Germany—Howard K. Hicks, 21, Route 1, recently was promoted to sergeant in Germany, where he is assigned to the 11th Airborne Division.

Sergeant Hicks, son of Mr. and Mrs. Hawley Hicks, Route 1, Marion, is an operations specialist in Company K of the division's 188th Infantry Regiment. He has been overseas since last March.

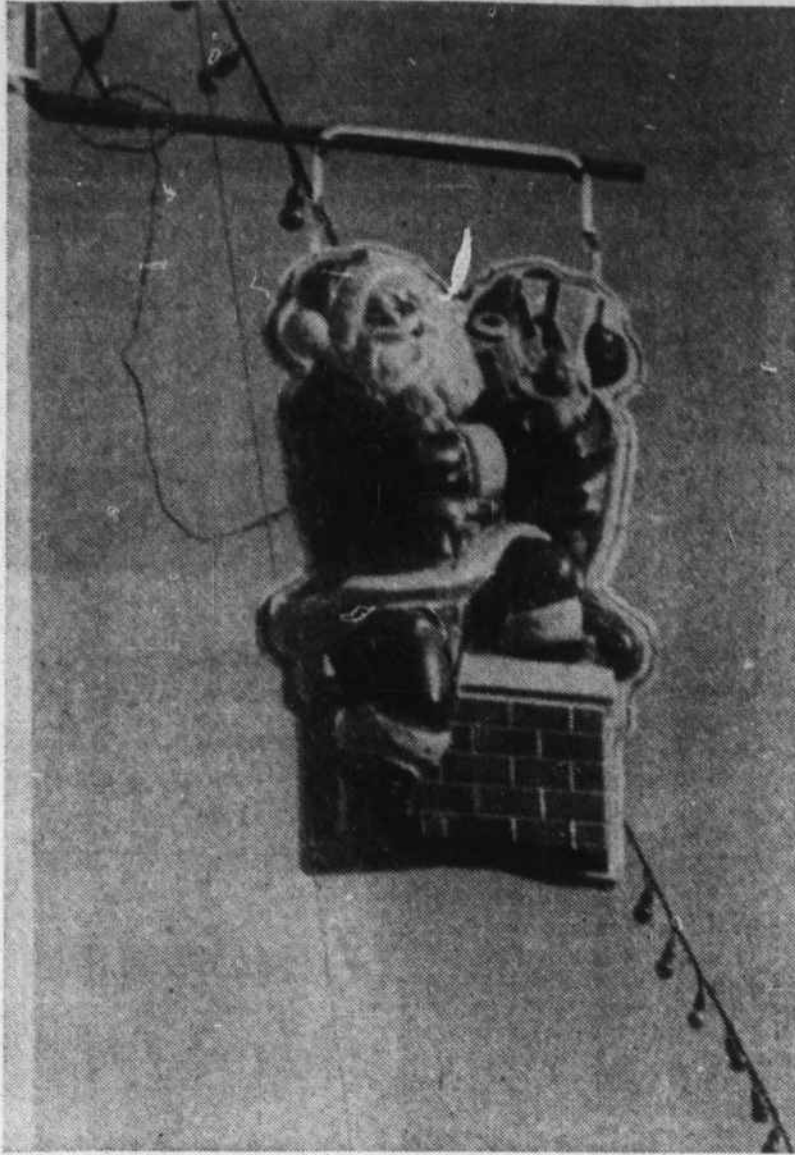
Hicks attended Berea (Ky.) College before entering the Army in January 1955.

Stevenson 590,530, and Eisenhower 575,062, while Governor Hodges polled 760,480 against Haynes 375,379. In the senatorial race Ervin received 731,433 against Johnson's 367,475.

The official tabulation in the 12th District Congressional race shows Shuford with 55,927 against Clark's 46,760. The voting by counties was as follows:

	George A. Shuford (D)	Richard C. Clarke Jr. (R)
Buncombe	22,018	16,095
Cherokee	3,030	3,462
Clay	1,352	1,354
Graham	1,591	1,618
Haywood	8,779	5,503
Henderson	5,269	7,859
Jackson	4,242	3,045
Macon	3,457	2,853
Swain	2,108	1,600
Transylvania	4,081	3,275
Totals	55,927	46,760

Some 10 million persons in the United States are employed in the manufacture, sale, servicing and commercial use of motor vehicles.



NOW ON DUTY helping to light up Waynesville's Main St. for the Christmas holidays is this electrical "portrait" of Santa Claus, mounted on a white-way pole in front of the courthouse. Other poles on Main St. display red bells, reindeer, and striped candy canes. (Mountaineer Photo).

Robert Round Is Now Pastor Of N. Canton Baptist

Rev. Robert Round of Morganton has accepted the call to become pastor of the North Canton Baptist Church, and he and his wife moved into the parsonage last week.

The Rev. Mr. Round is a native of Louisiana. He received his A. B. degree from Louisiana State University and his B. D. degree from the New Orleans Baptist Seminary.

He was ordained by the Springfield Baptist Church, Springfield, La., in April 1950. He has held pastorates at Grangeville, Pine Grove and Springfield in Louisiana, before coming to North Carolina.

While at Morganton he was engaged in evangelistic work, and supplied a number of pulpits.

Mrs. Round is the former Miss Verlene Mabe of Morganton.

Hall Given C&P Job On Coast

James M. Hall, Jr., former Cantor manager of Carolina Power & Light Company, has been transferred to Wilmington as assistant district manager, effective December 26.

The change was announced today by Raymond A. Snow, Raleigh district manager. Mr. Hall has been stationed in Raleigh during the past month. He will replace Crom Lennan, who has been transferred to Dillon, S. C.

A native of Asheville, Hall attended the University of North Carolina and first joined CP&L in 1944. In addition to six years' in Asheville, he served as local manager at Hazelwood and at Canton.

He is married to the former Eleanor Brown of Asheville. They have one daughter, Leina Eleanor Hall.

Mass Meeting For Baptist B.T.U. Set Monday Night

The Haywood Baptist Training Union will hold a mass meeting at the First Baptist church here, Monday, Dec. 3, at 7:30, it was announced today by Robert L. Clark, associational training union director.

Rev. Rommie Pierce, of the Plaza Baptist church, Charlotte, will be the speaker.

Director Clark said he expected all pastors of the Association to attend, and to bring a large percentage of their members.

Jerry Galvin, approaching his 100th birthday in Estherville, Iowa in August, 1956, boasted that "I'm growing a whole new head of hair."

Pittsburgh Press Columnist Writes On Park, Maggie

Western North Carolina in general and Maggie Valley in particular are the subject of several items in a column, "Gilbert Love's Notebook" in the Pittsburgh Press, Pittsburgh, Pa.

The items read: "Before starting out on a trip to the Great Smoky Mountains of Western North Carolina, this reporter though would combine it with a few days' stay at Nags Head, on the coast of the same state. That was before he discovered that he was closer to Nags Head in Pittsburgh than in the Great Smokies."

"North Carolina is a long state. Bill Sharpe, who edits a magazine down there, maintains that the westernmost town in North Carolina is closer to Little Rock, Ark., than to the coast of its own state. "End Geography lesson."

"A North Carolina village near Maggie on U. S. Route 19 near the south entrance to Great Smoky Mountains National Park is fixing to be a tourist center."

"Most of its scattered business buildings have been painted up to look 'new old fashioned' like the business houses of Scottsdale, Ariz. Most of them are decorated with placards featuring a bustling old woman, who apparently is Maggie herself."

"The so-called General Store—which is pretty general—is freckled with clever placards. One advertises 'Barlow Knives, Jelly Beans and Snuff'."

"A placard near the entrance asserts that 'There's no place like this place anywhere near this place, so this must be the place.'"

Maggie on U. S. Route 19 near the south entrance to Great Smoky Mountains National Park is fixing to be a tourist center.

"Most of its scattered business buildings have been painted up to look 'new old fashioned' like the business houses of Scottsdale, Ariz. Most of them are decorated with placards featuring a bustling old woman, who apparently is Maggie herself."

"The so-called General Store—which is pretty general—is freckled with clever placards. One advertises 'Barlow Knives, Jelly Beans and Snuff'."

"A placard near the entrance asserts that 'There's no place like this place anywhere near this place, so this must be the place.'"

Parking Pays

MADISON, Wis. (AP)—When Eral E. Wheeler of Madison dropped a penny in a downtown parking meter it paid off like a slot machine. After his penny rang up 12 minutes of parking, the front dropped to the ground and 59 pennies rolled out.



NORTH CAROLINA STATE AIR ROTC COLOR GUARD—Pictured here is the Color Guard of the North Carolina State College Air Force ROTC detachment. Left to right: Donald R. Fountain, Wilmington; James W. Edwards, Whiteville; William O. Caldwell, Jr., Clyde; and George R. Ehler, Fayetteville.

Car Damaged At Riverside Church

Officers are investigating the vandalism done to a Dodge car of Mrs. Shipman at the Riverside church Thursday night. Mrs. Shipman parked her car there as she took a bus to Enka where she works. Upon her return she found the four tires flat, handles to the doors sprung, and the radio antenna broken off.

Members of the Sheriff's office are investigating, and have some clues which they are following up.

The North Carolina wheat allotment for this year has been cut by about 850 acres.

Santos, Brazil, the world's largest coffee port, is situated on an island which is protected by a higher island from Atlantic storms.

Nurses' Meeting Set In Asheville Dec. 12

District One of the North Carolina State Nurses' Association will meet Wednesday, December 12, at 4:00 p.m. at the Buncombe County Court House, Asheville.

The business of the meeting will be election of officers for 1957 and entertainment will be furnished by the Allen High School Chorus.

Schoolmasters To Meet Monday At Fines Creek

The Schoolmaster's Club will hold a supper meeting Monday at 6:30 p.m. at the Fines Creek School.

The program on "Our School Legislative Program," will be presented by the men of the faculty of Fines Creek.

Carl Ratcliffe will preside.

New 1957 License Tags Will Go On Sale January 2

Motorists will have to wait until after Christmas this year to buy their new 1957 license plates, and if they are in no special hurry to be "first" they may even wait until the last of January.

The new tags will not go on sale until January 2, it was learned from the Chamber of Commerce and branch office of the Carolina Motor Club this week. In previous years they have gone on sale December 1st.

The plates, produced at the state prison in Raleigh, are being turned out "like a cook turning flapjacks", a spokesman for the Motor Vehicle Department said, and thousands of them will be distributed throughout the state in time for the opening date on January 2.

The colors will be reversed, orange numerals on black, instead of black on orange.

Nothing Sells Like Newspapers



PATSY SAYS:

Coal is Economical!

Patsy Coal gives you more heat per dollar, because it's over 97% pure. Has little ash—is long-burning, gives clean, steady heat. Quick response to controls, too!

Order PATSY COAL Today

RICHLAND SUPPLY CO.

Phone GL 6-3271

Commerce St., Waynesville

666

FIGHTS ALL COLDS
SYMPTOMS AT ONE TIME...
IN LESS TIME! IT'S THE
PROVEN COLDS MEDICINE

NOW OPEN

MUSE'S

Sinclair Service

North Main Street Waynesville

CLARENCE MUSE, OWNER

- WASHING • WAXING
- POLISHING
- PICK UP AND DELIVERY SERVICE

OPEN 7 DAYS A WEEK

Phone GL 6-9195

HELP YOURSELF
TO THE BEST

MONEY

SERVICE IN TOWN

SIGNATURE — HOUSEHOLD — EMERGENCY

LOANS

TO CONSOLIDATE DEBTS

\$10⁰⁰ TO \$100⁰⁰

ECONOMY LOANS

INCORPORATED

143 Main Street Phone GL 6-8574

KURT GANS

FOR HER GIFT
Only The
Finest Will Do!

LE COULTRE
Centuries Watch
IN 14K GOLD

For that gift which offers boundless prestige in exclusive, fashionable beauty—in years of dependable timekeeping—choose a LeCoultre Couturier Watch from our wide assortment of "The Most Exceptional Watches in All the World".

LE COULTRE PETITE, \$110. FTI

Your Complete Christmas Gift Store

Kurt Gans

W.N.C.'s Leading Jeweler

MOTOROLA TV

21-INCH
OVER-ALL DIAGONAL
263 SQ. IN.
VIEWABLE AREA

BEAUTY OF A BARGAIN IN TABLE TV... SUPERBLY DESIGNED AND ENGINEERED MOTOROLA DELUXE TV

Here's solid worth! Super-power and picture from Super 5-Star Power Chassis. Push-button On-Off, Built-in-Tenna, noise-free performance. Mahogany or Blond grain finish. Model 21T36.

BE SURE TO REGISTER FOR
FREE TV FLOOR MODEL CONSOLE
TO BE GIVEN AWAY

DECEMBER 20th

IN THE

MOTOROLA OTTO GRAHAM GUESSING CONTEST

NOTHING TO BUY — JUST COME IN AND MAKE A GUESS!

NELSON'S

RADIO & TV SERVICE

MILLER STREET DIAL GL 6-6581

IMPORTANT FACTS TO REMEMBER—

- 1—WHEN YOU INVEST YOUR MONEY IN THE HAYWOOD SAVINGS AND LOAN ASSOCIATION, YOU DON'T HAVE TO WORRY ABOUT MARKET FLUCTUATIONS. IT IS ALWAYS WORTH ONE HUNDRED CENTS FOR EVERY DOLLAR
- 2—YOUR MONEY AVAILABLE WHEN NEEDED — WITHOUT RED TAPE OR DELAY
- 3—WHEN YOU SAVE YOUR MONEY HERE, YOU NOT ONLY HELP YOURSELF, BUT ALSO ADD TO THE GROWTH AND EXPANSION OF YOUR COMMUNITY.

DEPOSITS MADE, TO THE TENTH OF DECEMBER EARN FROM THE FIRST.

OUR CURRENT INTEREST IS 3½%

HAYWOOD SAVINGS & LOAN ASSOCIATION

149 MAIN STREET
WAYNESVILLE

EACH ACCOUNT IS INSURED UP TO \$10,000 BY THE FEDERAL SAVINGS AND LOAN INSURANCE CORPORATION