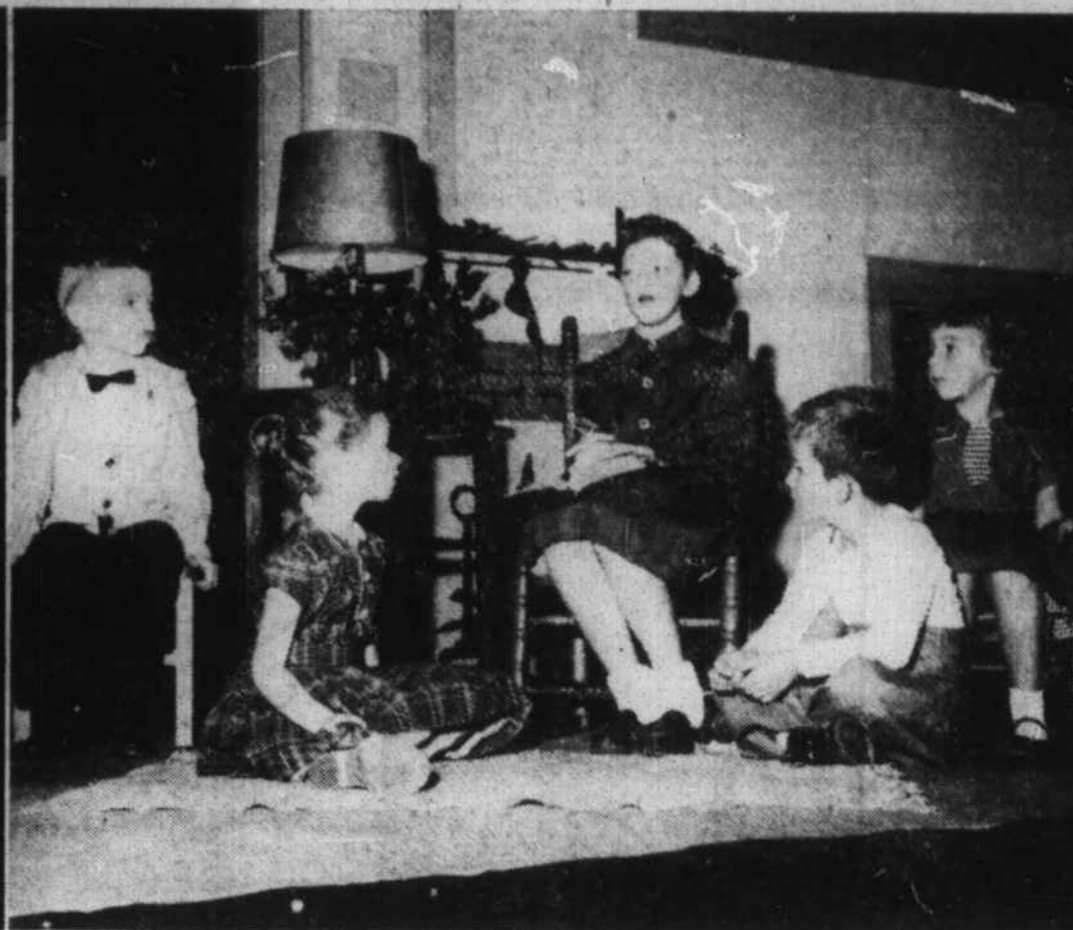




LITTLE ANGELS who will appear in Hazelwood School's Christmas pageant tonight are (front row, from left) Maxine Rogers, Kathy Isley, and Mary Frances Hicks; (second row) Elaine Hunnicutt, Deborah Mock, Diane Smith, and Barbara Blalock; (third row) Caroline Moore, Reba Ann Kelly, Linda Duncan, Sharon Ray, and Kathy Price. The shepherds are Freddie Moody and Edward Marshall.



THE CHRISTMAS STORY is told here at the Hazelwood pageant by Betty Finney, as a mother, to her "children" (from left): Bobby Taylor, Debbie Welch, H. C. Cable, and Brenda McGaha.



SINGING ANGELS in the Hazelwood pageant are (kneeling, from left) Brenda Tate, Camilla Taylor, Barbara Mills, and Kathy Collins; (standing) Dora Ann Holloway, Jo Prevost, Radie Creasman, and Kay Franklin. (Mountaineer Photos)

Hazelwood Pupils To Give Christmas Pageant Tonight

A Christmas pageant, "The Little Shepherd," with a cast of 38, will be presented by Hazelwood School pupils at 7:30 p.m. tonight in the school auditorium.

The pageant opens with the appearance of the little angels, strumming harps and blowing trumpets, who sing of the little shepherd, David, who longed to see the new-born king in Bethlehem, but would not leave the tending of the fire and the care of a wounded lamb to satisfy his own desire.

The scene then shifts to a fireplace tableau, where a mother tells her four children the Christmas story.

Later, David's angel comes to help him see the Baby King, and

to learn the lesson that "all who forget self in kindly service will serve Jesus, for that is what he came to teach."

The last scene in the pageant is the Nativity Scene with angels, wise men, and shepherds gathered around Mary and Joseph and the Christ Child lying in a manger.

Little angels in the cast are Barbara Blalock, Linda Duncan, Elaine Honeycutt, Kathy Isley, Mary Frances Hicks, Reba Ann Kelly, Deborah Mock, Caroline Moore, Kathy Price, Sharon Ray, Maxine Rogers, and Diane Smith.

Betty Finney plays the role of mother, and Brenda McGaha, Bobby Taylor, Debbie Welch, and H. C. Cable portray her children. The

narrator is Tim Rothermel.

Appearing as shepherds are Eddie Grooms, Eddie Haddock, Dick Kimball, Freddie Moody, Tommy Carswell, Randy Hinkley, Edward Marshall, and Jackie Parton.

Ross Prevost plays the part of the little shepherd, and the angels are Kathy Collins, Radie Creasman, Dora A. Holloway, Kay Franklin, Barbara Mills, Jo Prevost, Brenda Tate, Marlene Webb, and Camilla Taylor.

In the Nativity Scene, Monica Leslie plays the part of Mary, Ronnie Dean is Joseph, and Lynn Milner is David's angel.

Several choral numbers during the pageant will be sung by the Hazelwood Sixth-Grade Glee Club. Faculty committees in charge of the pageant are:

Mrs. Perry Plemmons and Miss Janice Smathers, music; Miss Lois

(Continued on page 5)

KURT GANS — "The Home of Quality Diamonds"

Another New Service at Kurt Gans

RESET YOUR OWN ORIGINAL DIAMOND

in glamorous new 1956 fashion!

PAY A LITTLE AT A TIME

For as little as **\$17.50**

Feature Lock
INTERLOCKING DIAMOND RINGS
WITH THE FABULOUS, NEW
Feature-glo
SETTING

MAKES CENTER DIAMOND
LOOK ALMOST
**TWICE THE SIZE!
TWICE AS BRILLIANT!**

*Certified and Proven by American Testing Laboratories Inc.
Many beautiful styles to choose!
Come in today!

We Save You From 30 to 40% On Diamonds - - - We Buy Direct.
Open Each Evening Until 9 P. M.

Your Complete
Christmas Gift
Store

Kurt Gans

Register Now For
The \$1,000 In
Diamonds We Are
Giving FREE

Western North Carolina's Leading Jeweler



ALLISON & DUNCAN TIRE CO., INC.

Telephone GL 6-8606

P. O. Box 116

HAZELWOOD, N. C.

ON OUR SIXTH ANNIVERSARY

Six years ago this month we opened the Allison & Duncan Tire Company, bringing to Western North Carolina the finest quality retreading and tire service the market affords. Since that time we have enlarged our plant to accommodate additional recapping machines and other equipment of the latest design, including electronic drying equipment, to improve the quality of our product. We are now equipped to supply most all your motoring needs with nationally advertised products . . . guaranteed by the manufacturer and backed by the reputation of Allison & Duncan Tire Company.

As we observe our sixth anniversary, we want to express our sincere appreciation to our many friends for their loyal patronage. It has been a pleasure to serve you. And we hope that both we and our associate dealers from Canton to Murphy may have the opportunity of serving you often in the future.

ALLISON & DUNCAN TIRE CO.

Bob Allison

Manager.