

County Agent McLendon Makes Semi-Annual Report; New Agent Added Much Accomplished

During the period between January 1, 1935 to July 1, 1935 the Assistant County Agent was placed in the county by the state and federal departments, and his entire salary is paid from these departments. His duty will be to carry on extension work. Mr. P. D. May was appointed Assistant Agent the first of April and since that time he has worked, principally with strawberry growers and truck growers, giving numerous demonstrations in grading and packing strawberries and vegetables. In collaboration with E. B. Morrow, State Extension Horticulturist, he has begun strawberry cultural and fertilization demonstration with twenty-four growers in the county.

Since January the County Agent and Assistant Agent have attended one conference of the Extension Agents held at Wilmington during the month of May. Three instruction meetings have been attended by the County Agent, Assistant in cotton, and others of the office force, to receive instructions in various activities of the office in the AAA program.

Two meetings of the North Carolina Irish Potato Advisory Committee on four different occasions. Each time suggestions as to the Irish potato contracts were made

and discussed to be relayed to Washington to the Adjustment Administration. Numerous meetings have been held in the control committee of tobacco, cotton, and corn-hog during this period for the purpose of adjusting the contracts, acceptance of contracts, and approval of contracts to be forwarded to the Raleigh office for the various boards of review. Other activities of the extension office have been; the writing and completing of 171, 1935 tobacco adjustment contracts; the writing and completing of 128 special base tobacco contracts; the writing and completing of 657 new cotton contracts; the writing and completing of 670 forms in connection with the 1934-35 cotton contracts; the writing and completing of 225 upward and downward adjustment forms on 1934-35 cotton contracts; the filling out and delivering 40 supervisors 3,222 tobacco contract compliance sheets; the writing, completing, and delivering to supervisors, 1,489 compliance forms for the 1934-35 cotton contracts; completed 365 tobacco transfers; addition of land and split contracts completed transfers changes of legal status, etc., on 80, 1934-35 cotton contracts held one meeting

for the instruction of 42 supervisors who would measure all of the land on the tobacco and cotton contracts in force in the year 1935. Prepared and mailed out 12,000 copies of four circular letters to cotton and tobacco contract signers; mailed out 9,000 postal cards to contract signers during this period, notices of checks, etc.; delivered 3,500 tobacco and cotton parity and rental checks; have written and completed 105 corn-hog contracts; completed a summary of all tobacco contracts for the years 1934-35 as follows: Base acres, 21, 192.7; 85 per cent of base acres, 17,919.4; 90 per cent of base acres, 18,618.2; Base production, 16,187,881; Initial production allotment under ruling 37, 15,328,212; for 1935, 15,629,519; Permitted as this summary covered 3222 tobacco contracts.

Have at this time in the field measuring land, 42 supervisors, headed by a County Supervisor, these men turning in an average of four contract measurements a day, which is considerable increase over the work accomplished in 1934. An average of ten employees have been in the Agent's office during this period. 447 applications for Emergency

Crop Loans were made out in the office during this period, the majority of which were approved and loans made. Agent has given assistance to the Production Credit Association and farmers making loans from this association, the association making 400 loans for a total of \$115,000.

A committee was appointed by the Agent for the approval of loans of clients of the Rural Rehabilitation Corporation and further assistance has been given to the personnel connected with this work in Duplin County.

Calls have been made on Agents and heads of the different departments in Agent's office during this period, by ten thousand farmers and others. Referendum was conducted on June 22 until June 29 on the continuance of the tobacco program for three more years. 4,500 ballots were mailed out to contract signers for themselves and their tenants. A total vote of 4607 ballots were cast, 4535 of which were for the continuance of the program, and 72 against continuance of the program. (More on back page)

Columbia, S. C., July 4th—Federal intermediate credit bank debentures have been approved as security for deposits of postal savings funds in banks, according to a statement by J. E. Cagle, president of the Federal Intermediate Credit Bank of Columbia, who said that this action broadens the field of investors to whom these debentures may be sold.

"The recently-enacted Farm Credit Act of 1935," said Mr. Cagle, "provides that Federal intermediate credit bank debentures shall be lawful investment for all fiduciary and trust funds under the jurisdiction of the United States Government and may be accepted as security for all deposits of public funds, thus increasing the desirability of the debentures as an investment."

Cedar Fork Items

Mr. and Mrs. D. H. Sloan and son, D. H., Jr., of Smithboro, S. C. spent the week-end with relatives and friends at Cedar Fork.

Mrs. Martha Sloan is spending a few days with Mrs. J. O. Pickett.

Mrs. Joe Williams and children of Tin City spent the week end with Mr. F. N. Brinson.

Miss Virginia Bradshaw spent Saturday night with Mr. and Mrs. Johnnie Jones.

Mrs. Ruby Bostic spent Saturday night with Mrs. Inez Wilson.

Miss Josephine Thigpin spent Sunday afternoon with Miss Lois Lanier.

Miss Mira Southerland spent Saturday night with Miss Froy Southerland.

Mr. and Mrs. Edmond Brinson spent Sunday afternoon with Mr. and Mrs. A. R. Ward.

Mrs. Martha Sloan spent Monday with Mrs. Lola Raynor.

Mr. and Mrs. A. R. Wood and Miss Ruth Pickett made a business trip to Kingston Friday.

Miss Margaret Hayes Wood spent Friday with Miss Letha Brinson.

Mr. and Mrs. Edgar Brinson spent Sunday with Mrs. Brinson's sister Mrs. Ann Jenkins of Tin City.

Bank Debentures Approves Security



FOOD Economy

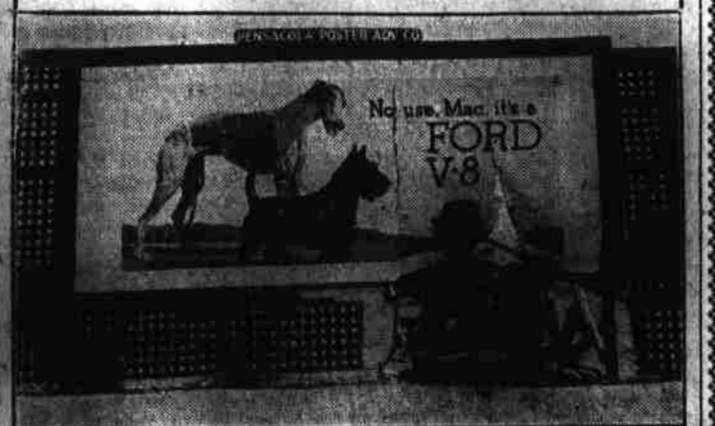
All over the world thousands of housewives are saving food, time and money with the Superfex Oil Burning Refrigerator. And while they're saving, their meals are better too, with less work and fewer hours in the kitchen. It costs less than \$10 a year to achieve these gratifying results, because Superfex derives its power from kerosene, the cheap fuel that is conveniently available everywhere. Constant food preservation... ice cubes when needed... the means to make delightful meals from "leftovers"... your choice of many delicious desserts, ice cream, cooling drinks... all these things are yours with a Superfex. Superfex is made in five different models. There is one to suit your requirements. Just call us and we'll arrange a free demonstration.

LEON J. SIMMONS
MT. OLIVE, N. C.
A Product of Perfection Home Company
SUPERFEX
Oil Burning REFRIGERATOR

KING'S COURT SERVICE STATION

A Full Line of
TEXACO Products
Firestone Tires,
Batteries,
Accessories,
PHONE 183
Opposite Court
House
W. S. NUNN
Kinston, N. C.

Stolen Auto Halts Parley of Pooches on Signboard



Pennacola—The conversation between a greyhound and a Scotch terrier on a signboard at the Prisco crossing in West Pennacola was interrupted when the automobile about which they were talking suddenly tore down the signboard. The greyhound had just repeated for the 1,269,936,437th time: "It's no use, Mac, it's a Ford V-8" when the car, to which he referred at that particular time, suddenly left the highway and plunged straight at them.

The particular portion of the signboard on which they rested tumbled to the ground while four negroes, who had taken the automobile without permission a few minutes before, piled out of it and ran away.

The car, a 1935 model Ford V-8 sedan, de luxe, was already the object of a hunt by officers at the time it plunged through the signboard. While the automobile was being sought all over the city, reports were received it had interrupted the conversation between the greyhound and the Scotch terrier on the West Pennacola signboard.

BEGINNING MONDAY MORNING

L. Harvey and Son Co.

Offer You
After Inventory Specials

100 COTTON DRESSES
Styles for Women and Misses.
Many New Materials. Regular \$1.98 Values
\$1.28

78 SILK DRESSES
Plain and Print. Light and Dark Colors. Values to \$8.95—
\$2.98

97 STRAW AND FABRIC HATS
The Season's Favorite Styles, Black, Navy, Brown, Tan, Pink, Beige, Light Blues, few White.
Value to \$4.98
99c

COOL COMBINATIONS
Made of fine mesh. Sizes 34 to 46.
HARVEY SPECIAL
\$1.00

For your selection, every type Brassiere is in our stock.
Priced from —
29c to \$1.00

Group of —
KEYSER "MARVELRAY"
PANTIES, BLOOMERS, BRIEFS
at — 2 all sizes
59c
All Sizes Tea Rose Only

TWO-WAY SCRETCH GIRDLES
Excellent Quality
Made especially for us —
89c
Small Medium Large

L. Harvey and Son Co.

KINSTON, N. C.

The Refrigeration Sensation of 1935... the New

CROSLEY Shelvador

ELECTRIC REFRIGERATOR

See The **NEW** \$79.50 And Up

Reasonable Carrying Charge On Liberal Terms

Check These Four Revolutionary Features

- 1 THE SHELVATRAY**—Many items from the refrigerator can be placed on the Shelvatray and carried... to cabinet, table or stove in a single trip. No need to place things on floor or chair as you gather them together.
- 2 THE SHELVABASKET**—A handy basket for carrots, cabbages, canned goods and the like. Swings with the door and takes no room. Provides a place for things ordinarily allowed to stand around in paper bags. It is not refrigerated.
- 3 THE STORABIN**—Potatoes and onions are bulky. Here's a place for them, and it's not refrigerated. The Storabin represents the scientific use of space that ordinarily is wasted and hard to keep clean.
- 4 THE SHELVADOR**—The greatest advance in refrigeration since the electric refrigerator was invented... increases the "usable" space by about 50 percent. In addition it provides a place for small items that take up a lot of shelf-room and are usually hard to find.

Save TIME HEALTH... MONEY
Select YOUR CROSLEY Shelvador NOW! Immediate Delivery

STEED'S CAFE

WARSAW, N. C.