

NOTICE OF SALE

By virtue of the authority contained in a certain mortgage deed executed by Rufus Allen and wife, Louise Allen to Margie A. Wilson, intestate of J. S. Wilson, Administrator, on July 2, 1933 and recorded in Duplin County Registry in book 304, page 330, default having been made in the payment of the note thereby secured in accordance with the terms thereof the undersigned will on Wednesday, April 21, 1937, offer for public sale to the highest bidder for cash at the court house door of Duplin County in Kenansville, N. C. at about the hour of 1:00 o'clock, p. m., the following described real estate, situate and being in Warsaw Township, County of Duplin, State of North Carolina, to-wit:

Being on the west side of the A.C.L. Railroad Company and near the town of Warsaw, Lot No. 2, beginning at College Street at the corner of Lot No. 1 and runs N. 14 W. 100 ft. to a stake, thence S. 76 W. 50 ft. to a stake; thence S. 14 E. 100 ft. to College Street; thence with said Street No. 76 W. 60 ft. to the beginning.

The above property being lot No. 2 of the sub-division made by L. Middleton, surveyor, on the 13th day of September, 1921. This land being the same that was purchased by Dick Williams from W. H. Williams, Jr., and being a portion of lots 45 and 46 in the W. H. Williams, Jr. sub-division for a plat of the same reference is hereby made to book 157, page

Records of Duplin County, reference is further made to plat recorded in book 235, page 60, Duplin County Registry.

This March 18th, 1937.
J. S. WILSON,

Presbyterian Meets April 6-7

Wilmington Presbyterian will meet in its annual session in the

Church of the Holy Spirit in Wilmington on Tuesday, April 6th at 10:30. The business board will meet at 9:30 and the registration will begin at 10:00. Various reports and the session of the Bible Hall. Study for next will take up the morning session. The afternoon session will feature an address by Dr. J. O. Mann. Wednesday morning session will begin at 9:30 and the Synodical Conference will be held at 10:30. A special memorial service for Dr. Worth, directed by Miss Sue parts and the session of the Bible Hall. The evening program will be given over to religious education with an address by Dr. J. O. Mann. Wednesday morning session will feature an address by Dr. A. D. D.

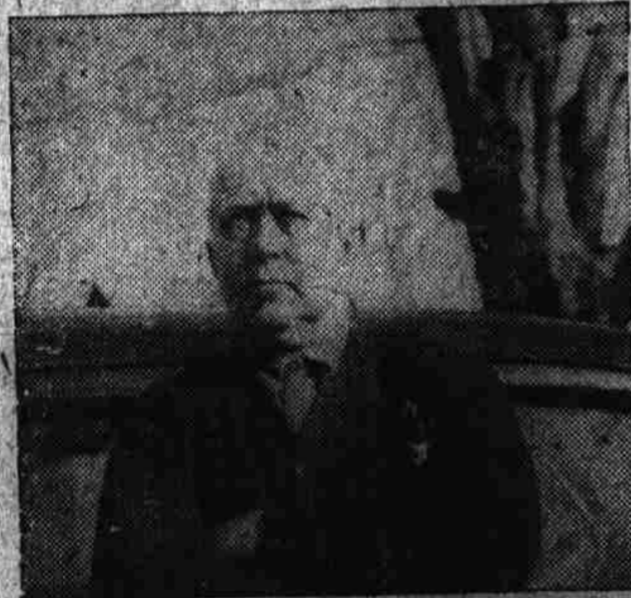
and new officers will be installed. The Wednesday afternoon session will complete the reports and hear messages from educational institutions. The Presbyterian Memorial service will be conducted by Miss Sue Hall.



Costs LITTLE - Pays BIG!

"Extra Potash Pays More On the Warehouse Floor"
—says Mr. MOSELEY

"I use extra NV SULPHATE OF POTASH around my tobacco," says L. O. MOSELEY, of Kinston, N. C. "This gives me a total of about 9% potash in my tobacco fertilizer. This produces a smoother, brighter leaf that holds on the plant long enough to acquire a silky texture which means extra dollars on the warehouse floor. I am sold on extra potash. When I can get a friend to give it a fair trial, I feel that I have done him a favor, the results of which he can see.



"Cotton Bolls Open Wide With White, Fluffy Lint"

"I had a six-acre cotton field which had been abandoned because of Rust," continues Mr. Moseley. "Three years ago I gave each acre 100 pounds of top-dresser made with soda and kainit in equal parts. I made 9 bales on the six acres, but some of the top bolls were rusty and the leaves looked rusty. The second year I changed my top-dresser to equal parts of nitrate of soda and muriate of potash to get more potash. All the bolls opened wide and turned out a fluffy, white lint that brought a premium of \$7.50 per bale. My return per acre was 976 pounds of lint, which brought \$146.40 and 49 bushels of planting seed which sold for \$73.50. Think of growing fancy planting seed on old rusty abandoned cotton land."

THERE IS A BIG BARGAIN in every fertilizer price list this year. Figure it out for yourself. Compare the cost of 1,000 pounds of 3-8-8 with the cost of 1,000 pounds of 3-8-5. Usually six pounds of tobacco will pay the difference. The 13% more actual plant food that 3-8-8 contains is probably the cheapest fertilizer you can buy.

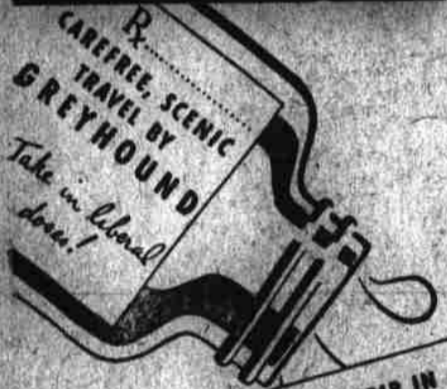
But don't buy 3-8-8 simply because it is a bargain, buy it because it is a better-balanced tobacco fertilizer. Remember, tobacco removes from the soil more potash than both nitrogen and phosphoric acid combined. Farmers, who have been using low-potash fertilizer, discover that the extra potash in 3-8-8 is just the thing their tobacco needs to produce extra yields and extra quality.

You too have something to look forward to when you change to 3-8-8. Full-grained, high-quality tobacco gives more pounds than thin, tissue-paper leaf or light, trashy leaf. When you produce 1,000 pounds of tobacco per acre, an extra cent per pound due to extra quality will pay the extra cost of 3-8-8 many times over. And 3-8-8 not only improves the quality of your tobacco, it also greatly increases yields.

Your fertilizer man knows the importance of plenty of potash in tobacco fertilizer. That's why he has 3-8-8 on sale. Tell him you want to try using more NV POTASH this year. Tell him you want 3-8-8 TOBACCO FERTILIZER MADE WITH NV POTASH—the mixture that so many successful growers swear by. Your tobacco will thank you with YIELDS+QUALITY.

FOR COTTON: NV POTASH PREVENTS COTTON RUST, helps control Wilt and produces vigorous, healthy plants with less shedding, larger bolls that are easier to pick and better yields of uniform, high-quality lint. Use fertilizer containing 8 to 10% at planting; or top-dress with 200 pounds of NV KAINIT per acre, or 100 pounds of NV MURIATE, or a nitrogen-potash, mixed-goods top-dresser containing plenty of genuine NV POTASH. It Pays!

A SPRING TRAVEL TONIC
Good for what ails you!



ENJOY THE BEAUTY OF SPRING HIGHWAYS

VISIT A FRIEND OR TWO

SEE NEW PLACES AND FACES

RETURN HOME FRESH AND RESTED

Prescription filled to individual order at
KENANSVILLE DRUG STORE
Kenansville, N. C.



Ask for **NVPOTASH**

N. V. POTASH EXPORT CO., Inc., Royster Building, NORFOLK, VA.