

SELL YOUR TOBACCO AND BANK AT FIRST NATIONAL

IN WALLACE

LOANS FOR ANY WORTH WHILE PURPOSE

Member Federal Reserve System



FIRST NATIONAL BANK

-Located Across From A & P WALLACE, N. C.

Use Our Drive-In Teller Window Installed For Your Convenience

Complete Banking Service

New Rig To Aid Power Lineman

The first of a dozen new trucks equipped to make power line work

Wheat 15-Acre Exemption Is Eliminated In '62

Due to the elimination of the 15.0 acre wheat exemption for 1962, farmers that have not planted any wheat on their farms in 1939, 1960 or 1961 can not plant any wheat for harvest on their farm for 1962. If a farmer plants wheat for harvest on his farm for 1962 and has not planted any wheat for the past three years, he will have to pay a penalty for all the wheat produced on his farm which will be not less than approximately \$1.54 per bushel.

Every farmer in the county has been notified about his wheat allotment or the amount of wheat he can plant. If a farmer is in doubt as to whether he is eligible to produce wheat, he should get in touch with his local County ASCS Office,

safer, speedier and easier, rolled into Raleigh this week for pre-assignment trials by Carolina Power & Light Company.

One feature of the new rig-an insulated fiberglass bucket that permits the lineman to work "hot" lines with a greater degree of safety is one of the latest developments in the electric industry, according to J. B. Bourne, superintendent of lines and motor vehicles for CP&L.

The bucket, mounted at the end of a fiberglass boom, all but makes obsolete the lineman's spurs and safety belt. It lifts him 41 feet into a working position and its insulating material isolates him from the dangerous "ground" which causes the most injuries in hot line work.

The truck is also equipped with a hydraulic auger that can dig a pole hole in the time it used to take a "grunt" (lineman's helper) to unlimber his hand sovel.

A pole claw does hydraulically the job that several men used to do with long pole pikes.

The hydraulic boom telescopes to nearly 41 feet, shifts from the horizontal to 75 degrees up and rotates 375 degrees.

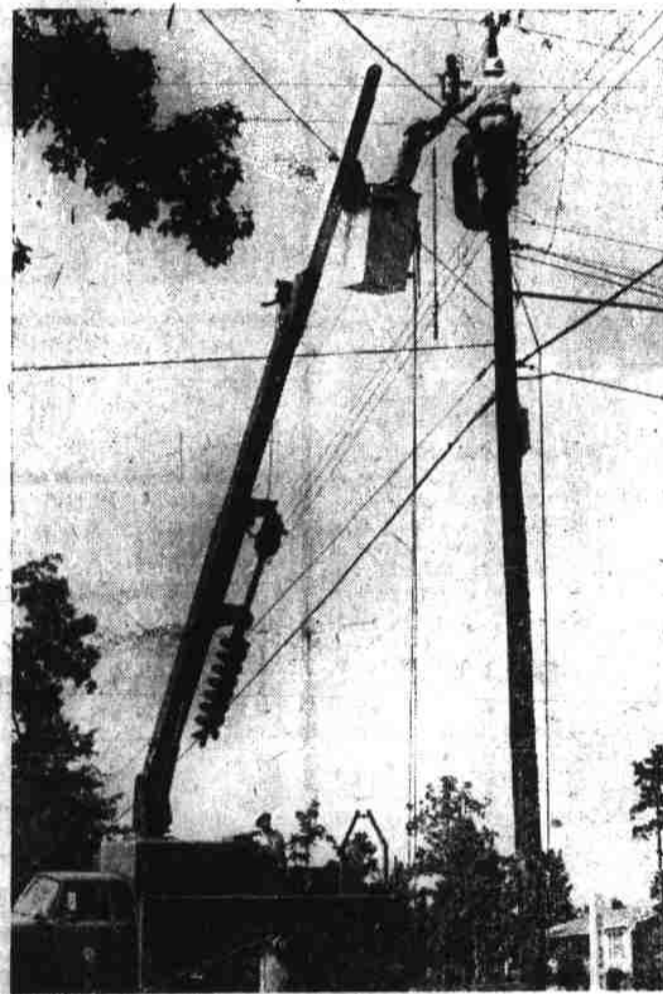
An air compressor powers pole-tampers and an impact tool that serves as a wrench or drill.

With the new rig, a three-man crew can do the work formerly done by five men, Bourne said. He added that this is another step by CP&L to speed service and hold down the cost of delivering electric

power to its customers.

Two trucks in the first consignment are due to remain in Raleigh. Another will go to Oxford and a

third to Roxboro. Six more will go to Wilmington for use in the coastal and tidewater areas, and two more will be stationed in Dunn.



NEW CP&L LINE RIG—A power lineman, sans spurs, reaches from an insulated bucket to help a companion install a pole transformer. This new truck with insulated bucket and boom has been introduced by Carolina Power & Light Company to make line work safer, speedier and easier. The rig all but makes obsolete the lineman's spurs and safety belt, and its power equipment helps three men do the work of five.



WASHINGTON REPORT
from
Your Congressman
DAVID N. HENDERSON

Because of the current interest in the possibility of deferment of members of Ready Reserves, etc., being called to active duty, I am sending you copy of a letter which I received today from the Department of Defense in reply to my requests for a comprehensive statement on the policy of the Department of Defense on such deferments.

David N. Henderson
Letter Follows

Dear Mr. Henderson:
The Secretary of Defense has asked that I reply to your letter of August 28, 1961, which requested that a comprehensive statement on the Department of Defense deferment policy for the involuntary call of Ready Reservists be issued at the earliest possible date.

For your information, there has been in effect since 1956 a Department of Defense screening of Ready Reserve under the provisions of the Armed Forces Reserve Act of 1952, as amended in 1955. Under this screening program each service continually screens the Ready Reserve so that those personnel in the Ready Reserve are immediately available for military service in the event of a national emergency. Those Ready Reserve personnel who are determined to be in a critical occupation, hardship or student category are transferred to the Standby Reserve.

When a Ready Reservist enters into a critical occupation or student category, he informs his unit commander of this change of status or this change is noted during the annual screening process. If the Ready Reservist qualifies for one of the above two categories, he is transferred to the Standby Reserve. This situation existed prior to the involuntary call of Ready Reservist on August 25, 1961. Only the Ready Reservist who encounters a personal hardship since the date of the involuntary call for ready Reservists should have an immediate problem of a deferment provided the Reservist has kept his unit commander informed of his current status. A Reservist request for deferment for reasons of personal hardship is considered under the same administrative procedures effective for personal or

active duty. Such a request for deferment is submitted by the individual concerned through his unit commander to the military command having cognizance for issuing orders to active duty.

If an individual Ready Reservist is in doubt as to his status, he should be directed to contact the unit commander of the organization to which he is assigned and request clarification of his status.

All deferment requests for hardship are to be submitted via the chain of command for Service concerned as indicated below.

ARMY

a. United States Army Reserve. Individual Reservist submits his request in accordance with AR 140-173 via his commanding officer to the Commanding General of the Army command to which unit is attached.

b. National Guard. Individual Reservist submits his request in accordance with NGR 25-3, via his commanding officer to the State Adjutant General if unit is not in Federal status. If unit is in Federal status then request is submitted in accordance with a. above.

NAVY

Individual Reservist submits his

request in accordance with Article H3704, Bureau of Naval Personnel Manual to the Chief of Naval Personnel via his commanding officer and District Commandant.

MARINE CORPS

Individual Reservist submits his request in accordance with the Marine Corps Manual Article 10 373 via his commanding officer to his immediate general officer in command.

AIR FORCE

A Reservist will submit his request in accordance with AFR 45-17 via his commanding officer to the commander authorized to order Ready Reservists to active duty.

Your interest in this subject is understood and sincerely appreciated. It has been a pleasure to provide you this information.

Sincerely yours,
Calisle P. Runge

Dr. Thomas W. Alley
Optometrist
Warsaw, N. C.
Rear of Warsaw Drug Company
Tues. & Sat. from 8:30 to 5:00
Eyes Examined - Glasses Fitted

We Have Just Been Appointed A Dealer In Famous

Botany 500

Mens Clothing - We Are Anxious To Show You

This Famous

Botany 500

Selection Soon.

How About Today?

It's a GRAND OLD NAME that of gentleman!

It has been WELL SAID by poets and dramatists that "The King can make a nobleman, but he cannot make a gentleman."

Neither, we submit, can a price tag of KINGLY PROPORTIONS authenticate a gentleman's NATURAL SHOULDER CLOTHING. The character of the clothing will soon declare itself.

We are, therefore, in accord with DAROFF OF PHILADELPHIA who make natural shoulder clothing for gentlemen of TASTE, and offer said clothing to you at its NATURAL PRICE. To further acknowledge our endorsement of these garments, we proudly affix our name to the MOST WORTHY 'BOTANY' 500 tailored by Daroff LABEL sewn in every article.

Natural shoulder sportcoats \$50, suits \$50, sport coats \$50, slacks \$50

'BOTANY' 500[®] tailored by DAROFF

Katz Dept. Store

Wallace, N. C.

Attention ...

COTTON GROWERS

You can get more DOLLARS for your cotton when you have it ginned at my gin with the best pre-ginning cleaning equipment in this section, and one of the best lint cleaners. There is little waste in cotton ginned. Both grade and turnout are important.

I am using the very heaviest grade of cotton bagging and new cotton ties which will give you more weight.

My gin is located 1 mile south of Clinton on Highway 421 near Highway 701.

I will operate the gin and give service each night at long as necessary.

E. L. Peterson Cotton Gin

Tel. LY 2-3575

Clinton, N. C.

SELL THE REMAINDER OF YOUR CROP WITH ...



Blanchard & Farrior Whse.

WE HAVE LED THE WALLACE AVERAGE

For 25 YEARS ...

DRIVE IN AND SELL ANY TIME



Call AT 5-2183 Wallace, N. C.