

33 varieties offered in  
**Big parade of 1963 Chevrolet models**



Chevrolet's parade of new products for 1963 includes four lines. Heading the list, which will be announced on September 28, is the luxurious Impala Sport Coupe (bottom), Chevy II 4-Door Sedan (left center), Corvair Monza Club Coupe (right center), and the new and startling Corvair Sting Ray Sport Coupe, the epitome of advanced styling. Chevrolet's wide choice of passenger cars includes 33 models in addition to 6 variations with special optional power-train combinations.

**SENATOR ERVIN SAYS**

WASHINGTON — Congress is prepared to conclude its work for this session. Senate action on the much-talked-about Trade Bill, and House action on the Farm and Foreign Aid Bills have paved the way for adjournment. As this week began, the Senate and House had yet to act on a number of conference reports and legislative bills, but action could come on most of them. These included Senate consideration of the Farm, Foreign Aid, and Postal Revision-Employee's Pay Bills.

**TRADE BILL** — Last week the Senate passed the Trade Bill by a 78 to 8 vote. I voted for a number of amendments to the bill which were defeated. I regarded these provisions as necessary protections for American workers and industries. On final passage I voted for the bill, because I am convinced that trade is the lifeblood of commerce between nations.

Under the bill the President receives authority to cut our tariffs as much as 50 percent over the next five years. It allows the President to cut tariffs further on products which the United States and Western Europe account for

practically all of the world market. It empowers tariff negotiators to bargain on groups of commodities whereas heretofore they have bargained on an item-by-item basis. The bill grants certain loans to eligible import affected industries, and unemployment benefits to workers who lose their jobs by reason of import competition. This provision was highly controversial because it could prove extremely difficult to determine when an industry has unemployment by reason of imports and when the unemployment arises for other reasons.

The success or failure of the Trade Act of 1962 will depend upon how it is administered. If the administrators are unrealistic in their approach, if they do not fight for American trade outlets, if they do not drive good bargains for American industries, the bill could create more problems than it solves. Properly administered the Act can help American trade.

The Trade Act of 1962 like any trade bill has many limitations. It cannot take the place of wise tax policies, nor prudent governmental operation within federal

budgets, nor cooperation by labor and management to allow American products to compete with foreign goods. The attitude that develops in these related policies certainly will affect American trade also in the years to come.

**HIGHER EDUCATION BILL** — On September 20, the House voted to recommit the Higher Education Bill to a Senate-House conference. This probably means that no further action will be taken on this bill at this session of Congress. House debate indicates that the House took this action because its members are convinced that the bill violates "the establishment of religion clause" of the First Amendment in that it authorizes loans and grants to church-owned and church-controlled institutions of higher learning.

When this bill was before the Senate some months ago, I anticipated that it would probably meet this fate if its proponents insisted on keeping in the bill the provisions extending the benefit of federal tax monies to church-owned and church-controlled institutions of higher learning. It was for this reason that I sought in vain at that time to persuade the Senate to adopt an amendment which would have restricted aid of this character to public

**A New Approach to Concert Hall Design**



Add instant people to modern wonders. Silent, fiber-glass folk, they literally packed the house at the recent "tuning" of Lincoln Center's Philharmonic Hall in New York, to provide the acoustical absorption of a live audience.

Dr. Leo L. Beranek, acoustical consultant and world renowned designer, describes with humorous touches this acoustical "dry run" in his new book, "Music, Acoustics, and Architecture." While an orchestra played to this fiber-glass audience, trained musicians roamed the hall in search of dead spots, echoes, and other acoustical pitfalls. The utmost fidelity in sound was achieved by adjusting mobile ceiling panels—a mobility that makes possible future changes to accommodate other listening needs.

Scholar, lecturer, author, musician and world traveler, Dr. Beranek has produced a book, which, like Philharmonic Hall, is a music lover's dream. Years in the writing, it comes alive through magnificent photographs and descriptions of 84 concert halls, through Dr. Beranek's interviews with musical greats, through Dr. Eugene Ormandy's eloquent foreword.

Published by John Wiley & Sons, "Music, Acoustics, and Architecture" describes how the cooperative efforts of musicians, architects and acousticians culminated in Lincoln Center's Philharmonic Hall. A publishing chef-d'oeuvre, it is likewise a manual for the architects and acousticians of the future.

**Tree Farms Base Woodpile To Fill Needs Of Nation**

RALEIGH — If all the wood used in the U. S. in one year were stacked to cover an average city block, the pile would reach 4.63 miles into the sky. Yet, even with this heavy use, the well-managed forests of North Carolina and other states are growing more wood each year than is being harvested and lost to natural causes.

Americans last year used about 12 billion cubic feet of wood in the manufacture of useful products, such as houses, paper and more than 5,000 other items, according to American Forest Products Industries, Inc., which sponsors nationally the voluntary American Tree Farm System of growing trees as a crop on taxpaying lands.

Credited with playing a big part in maintaining the favorable balance of tree growth over removal, city-owned and publicly-controlled universities and colleges.

The Tree Farm program is active in North Carolina and 47 other states. Nationwide, the system now has more than 59 million acres of well-managed timberlands enrolled.

The same forest lands that provide the nation with a mountain of wood are also providing many other benefits - recreation, food and cover for wildlife, and protection to valuable watersheds. This "multiple use" means the nation's woodlands are working to meet the many needs of the public, according to AFPI.

**IRS Intensified Tax Collections**

The Internal Revenue Service announced today that it has intensified its delinquent collections activity. The stepped-up enforcement measures are directed mainly at taxpayers who are liable for Social Security and Withholding Taxes and Excise Taxes on sales at retail and by the manufacturer. These are often referred to as "trust fund" taxpayers because they collect taxes from the general public which are required to be paid over to the

Government.

As evidence of the Service's intention to "crack down" on such delinquent payors and filers, Mr. J. E. Wall of the Greensboro IRS office said that during the past three months over 100 seizures of property have been made to satisfy delinquent tax liabilities. In addition, 474 levies have been served on third persons to seize salaries, wages, bank accounts and receivables in a massive further effort to enforce the Internal Revenue laws. Also, there were 897 tax liens filed.

Mr. Wall said that the number of "trust fund" taxpayers who are delinquent is small in relation to the total but his office intends to pursue its rigid collection enforce-

ment policy until the delinquent general taxpayer or his business is closed through seizure and sale of his assets.

The soil, like freedom, is not appreciated until it's gone.

We can offer up much in the large, but to make sacrifices in little things is what we are seldom equal to.

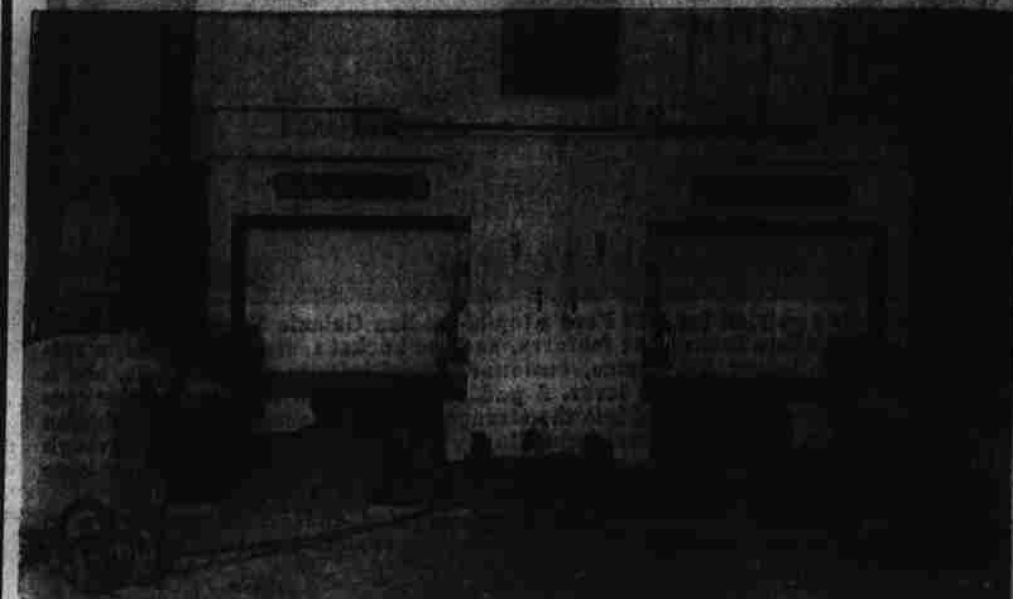
A livestock "snack bar" - the Cycle Timed Feeder - handles multiple feedings automatically. The new feeder was developed by New Holland to help farmers feed their animals more often with less labor.

**Stays Healthy Without Surgery**

**Stops Itch - Relieves Pain**

For the first time science has found a new healing substance with the amazing ability to shrink hemorrhoids and to relieve pain - without surgery. In case after case, with gently relieving pain, actual reduction (shrinkage) took place. Most amazing of all - results were those cases that suffered made astonishing statements like "Piles have ceased to be a problem!" The secret is a new healing substance (Bio-Dyne) - discovery of a world-famous research institute. This substance is now available in suppository or ointment form called Preparation 270. At all drug counters.

**Protect You And Your Family**  
**By Having The Front End Of Your Car**  
**Inspected For Safe Driving**



**8 Years Experience In Wheel Alignment**  
**All Work Guaranteed or Money Refunded**      **24 Hour Wrecker Service**  
**Tires At Wholesale Prices**  
**Equipment For Aligning TRUCKS and AUTOS In**  
**Warsaw and Also Baker and Evans in Wallace.**

**Evans Esso Station**

Highway 117      Phone 29 3-6551      Warsaw, N. C.

**Leder's INCORPORATED**

**FALL fabrics**

**New colors . . . new textures!**

It's exciting to create your very own styles, to fit your particular figure problems, to stretch your fashion dollars! Here are some rich quality fabrics that we highly recommend for your best sewing results.

**BOUCLE WEAVE**  
Textured Acetate and Rayon by American Silk Mills for the really smart "designer look". Black, red, blue. 45".

**\$1.98 yd.**  
**SCHLANG WOOLENS**  
"Twist Tweeds" are significant in new weaves as well as classics. 54".

**\$3.98 yd.**  
**"MOHAIR"**  
Mohair offers further excitement in checks, plaids durable knit jersey, printed jersey, and solids. All from 54" to 60" wide.

**\$1.98 to \$3.49 yd.**  
**TRIMMINGS**  
Browse through our newly arrived shipment of trimmings. A fine selection of fur trimmings in this group.

**PIN WALE CORDUROY**  
A superior quality that's washable and still beautiful after much wear and washing! Our large selection includes Black, White, Pastels and deep-tone fall colors. 36".

**\$1.00 yd.**  
**IMPORTED VELVETEEN & VELVET**  
From Italy to you . . . in Black and Autumn hues . . . an exquisite fabric for those occasions when you want to look your very best! Water spot resistant. 36".

**\$2.49 & \$2.98 yd.**

**GOLDEN '60's**  
Golden Threads highlight the Golden 60's. Choose from these, for evening or daytime wear: "Lame", "Brocade", "Spotlite Satin", "Faux D'Fran", "Matisse", "Silk Orpandy", "Chiffon", "Velvet" & "Velveteen".

**\$1.29 to \$2.98 yd.**

**Leder's**  
INCORPORATED  
GOLDSBORO, N. C.

**MR. FARMER:**

**Now Is The Time**  
**To Sell Your**  
**GOOD Tobacco**  
**And**  
**GOLDSBORO**  
**Is The Place**

**Thursday's Entire Sale**

**Avg. \$63.57 Per 100 Lbs.**

**Individual Farmers**  
**Averaging Up To**  
**\$75. For Entire Load**

**Bring The Remainder**  
**Of Your Tobacco To**  
**GOLDSBORO**  
**Where You Can Be Assured**  
**Of Top Prices And Service**

**GOLDSBORO**  
**TOBACCO BOARD OF TRADE**

**School Calls For Energy!**

Wayne Dairy Homogenized Milk with Vitamin D added is tops as an energy builder. Make sure your children get the lift they need with Farm Fresh Wayne Dairy Milk. Our milk is produced on local farms, processed in our modern plant and rushed direct to you. Try Wayne Dairy milk . . . in shining glass or new wax-free plastic cartons.

**WAYNE DAIRY**  
GOLDSBORO, NORTH CAROLINA