

N. C. To Feel Heavy Impact Of New "Medicare" Program

RALEIGH —(Special)—North Carolina must brace itself for a heavier impact than most other states when the government's new "medicare" program becomes effective next year, according to figures released here today.

"There are only 72 advanced nursing homes in the entire state, while the rest of the nation has an average of 200 per state," it was revealed by D. K. Appleton, who heads a newly-formed organization called Medicare Nursing Centers of America with headquarters in Raleigh.

In addition to the handicap of starting with only 6 per cent of the national average, government figures show the nation's total must be increased more than 400 per cent within the next four years in order to meet the needs created by medicare.

"This means North Carolina actually will need about 10 times as many nursing homes as now are available," Appleton noted.

The North Carolina Board of Health furnished the figure of 72 nursing homes in the state—but Appleton noted that only 43 are listed as full nursing homes while the other 29 are listed as combined nursing homes and rest homes.

Tar Heel Needs

Official figures of the U. S. Department of Health, Education and Welfare show there were only 2,832 "acceptable" nursing home beds in North Carolina last year, and that an additional 20,353 beds were needed.

By comparison, Florida was listed with 10,467 acceptable beds and was said to be in need of an additional 11,441 beds.

And Pa., credited with 12,863 acceptable beds, was reported to be in need of 43,990 additional beds. "Nationally, the shortage in nursing home beds will be more than twice as acute as the shortage in hospital beds when the medicare program is under way," Appleton said. Some 150,000 additional hospital beds will be needed, but the shortage in nursing home beds will be more than 320,000.

He explained that the flood of medicare patients into hospitals will create a critical need to move as many patients as possible out of high-cost hospitals and into low-cost nursing homes where they can still receive professional care during their recovery.

Also contributing to the impact on North Carolina facilities will be the high percentage of retired people who have been attracted to the state, he noted.

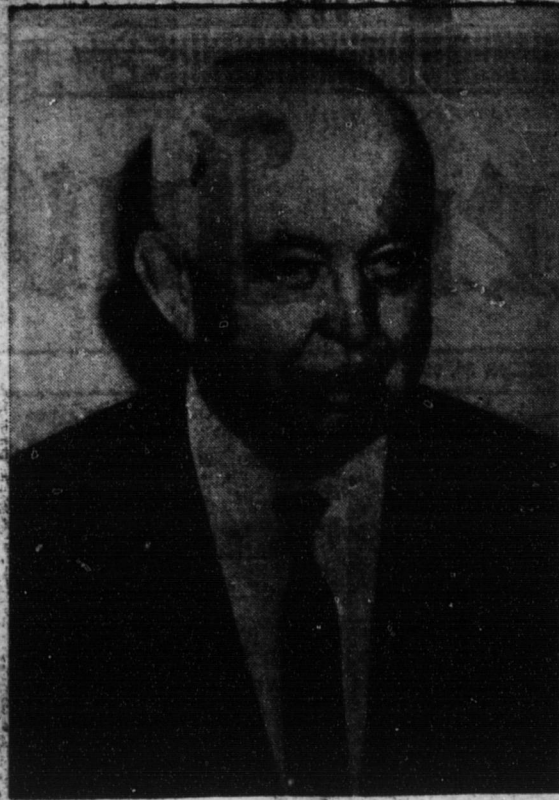
"This will cause North Carolina to have an even larger percentage of senior citizens than the present national average of 10 per cent."

MNCA's ROLE
Appleton's organization, announced several weeks ago,

Coolemees Journal

J. C. Sell, Jr. Owner
Mrs. J. C. Sell Editor
J. C. SELL, 1906-1940

Subscription Price
Three Months .50
Six Months .75
One Year \$1.50



Newly-elected NCMCA President D. W. Royster, Royster Transport, Inc., Shelby, takes oath during the 36th anniversary convention of the North Carolina Motor Carriers Association in Pinehurst at The Carolina.

is establishing a nationwide network of nursing centers to help ease shortages created by the medicare program.

Facilities already are underway at Raleigh and Charlotte, and options on other nursing center operations have been acquired. Financing will be through a public stock issue.

The board of directors announced several weeks ago includes former Gov. Terry Sanford and the North Carolina Medical Society's president, Dr. George W. Paschal, plus other widely-recognized authorities in the health and education field.

Memo to motorists: Drive carefully -- don't insist on your rights.

Heart Fund Has Gain Over '64 Of 19% - Record

Greensboro — Receipts of the 1965 Heart Fund campaign in North Carolina totaled more than \$651,000, Mrs. J. Spencer Love, of Greensboro, state chairman of drive, reports.

These returns, which do not include bequest income, represent a 19 percent increase over the 1964 campaign totaling more than \$547,000. Receipts of the annual fund-raising effort of the North Carolina Heart Association and its local chapters and divisions were less than \$200,000 in 1955 but have climbed steadily each year since that time.

Heart Fund receipts this year exceeded receipts of any other voluntary health agency in North Carolina. This year's Heart Fund gain represents the second largest campaign in the United States, with only California Heart Association showing a larger increase over 1964.

Final national receipts of the American Heart Association, of which the state organizations are affiliates, are expected to top \$34-million this year.

The American steel industry during 1964 used enough electricity to supply the total power needs of New York City plus eight other cities the size of Denver.

Use of steel by American railroads rose 35 per cent from 1963 to 1964, as they underwent a technological revolution to improve service and profitability.

Races At Charlotte

Charlotte, N. C.—Race drivers Buddy Baker and Dick Hutcherson, who will be competing in the sixth annual National 400 race on October 17 at Charlotte Motor Speedway have both made additions to their personal biographies.

For the professional football sized Buddy it is a 9 lb. baby boy born to him and his wife, Coleen, on September 10.

Buddy, who is currently enjoying his best season since he began racing on the NASCAR late model stock car circuit in 1958, will be behind the wheel of his father's 1965 Plymouth powered by the renowned hemi-head engine. This is the same car he drove to second place finishes in the Firecracker 400 at Daytona, Fla., and Darlington, S. C. on Labor Day.

The 6'5", 230 pounder drove as relief pilot for his father, Buck, who had started his sixteenth Southern 500 in the car. Buck has filed his entry for the National 400 fall classic in a 1965 Chevrolet.

Buddy, currently in the top 10 in the national point standings, will be shooting for a place in the first five positions in the championship standings by virtue of a high finish in the \$54,400 Charlotte race.

Dick Hutcherson, second only to Ned Jarrett in the National Championship battle, has announced his entry for the 400 mile, 267 lap speed fest and his move from Keokuk, Iowa to Charlotte as a home town.

The National 400 will be Hutcherson's second start on the mile and a half Charlotte track. His introduction to the 24 degree banks and fast straight aways came in the World 600 race last May when the father of three finished

third behind Fred Lorenzen and Earl Balmor.

Hutcherson will drive a gold and white 1965 Ford prepared by the famous Charlotte racing firm of Holman and Moody. It was the Charlotte location of Holman-Moody that prompted Hutcherson's move.

"When you run the full NASCAR schedule, you need a central location to minimize travel time," commented the nine year veteran of racing. "Living in Charlotte I'm close to the shop and I can get to see the family more."

preceded on Saturday, September 26, by a 250 mile race for the late model modified and late model sportsman NASCAR competitors in 1955 through 1962 model cars.

Sunday dinner guests of Mr. and Mrs. Walter Miller of Center Street were Mr. and Mrs. Walter Miller, Jr. and children, Timmy, Mark and Ashley Ann of Kannapolis, and Mr. and Mrs. Jimmy Jordan and children, Gary and Steven and Debbie, Miss Helen Grant and Miss Amelia Marklin of Mocksville, and also Johnny Hodges.

See Us For Your Insurance Needs Mocksville Ins. Agency, Inc.

J. E. DURHAM
For Real Estate Needs
RUFUS BROCK
Box 514 Mocksville, N. C.
Telephone Office — 634-5017
Night — 493-6767 — 998-8410
Davie Freezer Locker Building

For Good Fresh Sea Food VISIT THE ROWAN FISH CO.



We have all seafoods in season 6 days in the week
Wholesale and Retail
ROWAN FISH CO.
J. B. HARRISON, Prop.
Phone ME 3-9688
111 E. Council St. Salisbury, N. C.

Heating Oil Dependable Serv. Printed Metered Tickets Burner Service S & H Green Stamps
HORN OIL CO., INC.
Phone 634-2380
41 N. Main St. Mocksville



SIX INCH Air Drilled Wells —MODERN AIR DRILL— AIR WELL DRILLING CO.
Rt. 1, Advance, N. C.
Phone 998-4141

DO YOU EVER NEED
ESTERBROOK
SHEAFFER
PARKER
PENS
SOLD BY Earle's Office Supplies
Everything for Office
W. Innes Street
SALISBURY, N. C.

FRIDAY, SATURDAY & SUNDAY
"ZEBRA IN THE KITCHEN"
with Andy Devine
REBEL THEATRE
Route 4 Mocksville

DON'T LEAVE 'EM— MOVE 'EM!

ACCUMULATIONS OF DRY LEAVES NEAR HOUSE AND ON ROOF INVITE FIRE. CLEAR THEM AWAY!

INSURANCE INFORMATION INSTITUTE
JERUSALEM FIRE DEPARTMENT

GE FILTER-FLO® WASHER

- UP TO 14-POUND CAPACITY for heavy fabric loads
- EXCLUSIVE FILTER-FLO® WASHING SYSTEM removes lint fuzz
- NEW V-14 SPIRAL ACTIVATOR® 3-zone washing action
- PRE-SET WATER LEVEL SELECTION saves water and detergent too

• Variable Cycle Control • Automatic Detergent Dispenser • Cold Water Wash & Rinse • Soak Cycle • Unbalance Load Control • Safety Lid Switch • All Porcelain Top, Basket and Tub

\$4.00 PER WEEK

GE HIGH SPEED DRYER

Big Features at a Budget Price!

High Air Flow Drying automatically fluffs clothes through fast moving currents of properly warmed air, drying them naturally and quickly. Clothes come out so soft and smooth that many require little or no ironing.

- Up to 14-Pound Clothes Capacity • Variable Time Dry Control
- Four Heat Selection • Synthetic De-Wrinkler • Fluff Cycle • Safety Start Switch • Economy Heat Selection • Convenient Metal Lint Trap • Porcelain Enamel Drum and Top

\$4.00 PER WEEK

TIME TO TRADE!

Get a **P7 Range with Self-Cleaning Oven**

NOW AT A NEW LOW PRICE!
only **\$5.00 PER WEEK**

CLEANS ITSELF ELECTRICALLY

ASK FOR DEMONSTRATION

GENERAL ELECTRIC MOBILE MAID® PORTABLE DISHWASHER

THORO WASH

Given Spotlessly Clean Dishes Without Hand Rinsing, Scrubbing or Drying... Just Tilt Off Large or Hard Food Scraps.

- LIFT TOP RACK
- 3 CYCLE PUSHBUTTON CONTROLS
- NEEDS NO INSTALLATION

\$3.00 PER WEEK

MODEL SM-300A

BEAUTIFUL CONOLITE WORK SURFACE COUNTERTOP

Hendricks & Merrell Furniture Co.

701 Wilkesboro St. Phone 634-5131 Mocksville, N. C.