

Patronize Our Advertisers, For They Are Constantly Inviting You To Trade With Them.

The Farmville Enterprise

SELL — BUY and BANK — IN — FARMVILLE

VOLUME TWENTY-NINE

FARMVILLE, PITT COUNTY, NORTH CAROLINA, FRIDAY, NOVEMBER 11, 1938

NUMBER TWENTY-SEVEN

Audit Shows County To Be in Good Shape

Statement Sets Forth Affairs Are Ably Administered; Audit Was Made By D. R. Hollowell.

Greenville, Nov. 9. — The financial affairs of Pitt county, in all major particulars, were ably administered during the year ended June 30, according to a statement accompanying the balance sheet and comments on the condition and operation of the government, just completed by D. R. Hollowell and company, certified public accountants.

Comments on the budget follow: To the Honorable, the Board of Commissioners, of Pitt County, North Carolina, Gentlemen:

We have prepared from our detailed report of audit of the accounts and records of Pitt County, North Carolina, for the year ended June 30, 1938, the attached Consolidated Balance Sheet which gives as at June 30, 1938, a statement of the assets and liabilities of all County funds.

The Balance Sheet shows that as at the close of the year, June 30, 1938, the County had a net surplus of \$1,000,100.31.

The operations of the County during the year ended on June 30, 1938, were financed wholly from funds in hand at the beginning of the year and from funds made available through realizations from revenue and other sources within the confines of the various County funds without resort to borrowing, temporary or otherwise.

The cash position of the operating funds was materially improved during the year. The revenue collected for operating purposes — including only the revenue applicable to the year ended June 30, 1938 — exceeded the disbursements for operating expenses by \$10,269.87.

The Debt Service Fund was financed from tax collections and from funds transferred from the Sinking Fund to meet an issue of sinking fund bonds. The bonds and bond interest coupons, which matured during the year were promptly paid in amounts of \$136,000 and \$108,292.50 respectively.

The above remarks deal only with the cash transactions and show conclusively that the cash provided was more than adequate to meet the requirements for the year. The net increase in the cash transactions of all funds during the year was \$21,755.67.

Revenue and Expenses. In the above paragraphs and statements we have referred to the available and unavailable surplus of the County and to the relation of cash income to cash disbursements during the year was \$21,755.67.

The revenue levied in the form of taxes and the revenue for the year from other sources, realized and un-realized, are combined and compared with the total expenses in the operating funds.

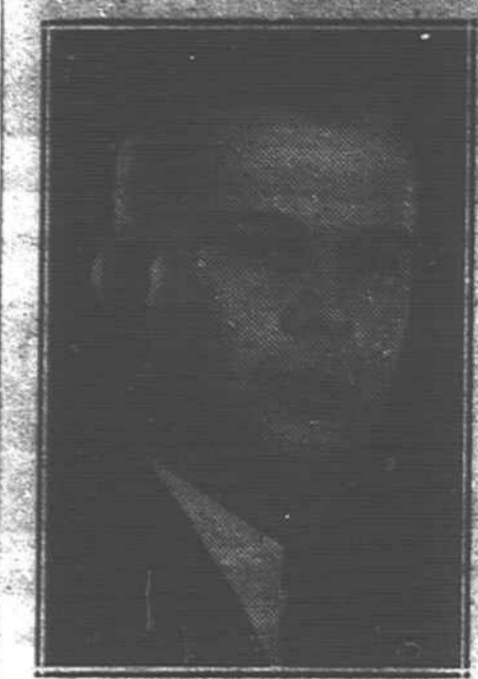
The net difference of \$13,289.88 in the above statement represents that amount of revenue in excess of expense and shows that due consideration was given to the matter of providing for adequate revenue as at the beginning of the year. The differences show no hardy more than normal variations and as such furnish a basis for future planning and adjustment in subsequent budgets.

The revenue provided for the Debt Service Fund was more than adequate to meet the requirements for the year. In this fund the large variation in the size of bond maturities from year to year make necessary an average yearly tax rate and with an adequate rate such as this effect in the County, variations in yearly differences between revenue and expense have little or no bearing on yearly results.

The expenses incurred during the year in excess of receipts over appropriations for the General Fund resulted from costs of litigation not provided for in the original estimate. This excess of expense as compared to the appropriations was more than offset, however, by the total revenue provided in excess of expense.

The budgeted appropriations for the year as a whole were not exceeded with the exception of the general cash position which was exceeded as explained in above paragraphs.

General. We consider the financial condition of the County in all major respects to be satisfactory and commendable.



J. H. MOORE, Chairman Red Cross Roll Call For Farmville.

LETTER RECEIVED BY J. H. MOORE

The following letter was received this week by J. H. Moore, president of the Farmville Rotary Club, from Mr. Bridges, guest speaker at the recent Ladies Night Meeting of the local club:

My Dear John:— You will never know how much I did really enjoy being with you and the members of your Club on Tuesday night and again with your School on Wednesday morning, it was a treat worth while.

I was thrilled to see so many young faces in your Club and they were all so very kind to express themselves as pleased with my feeble efforts Tuesday night.

As I stated to the Club and their guests, I had no apology to offer, I was tired and somewhat worried at the trials of the day and especially the day before leaving but as I stated to George Davis, I did my best under the circumstances and that is all to expect of any one.

I thoroughly enjoyed the Wednesday's school meeting, they were most kind and appreciative and as fine an audience as I have had. I thought of them on my return home and every time we flew over a school building I tried to see the kids but the faces of your pupils shined up to greet me.

John, kindly express my deep appreciation to the Club as a group and the lovely ladies who were also very kind and I want you to know how much I do appreciate your kindness to me.

I would be delighted to see any of you fellows when you are in our section and I am now making plans to have your fine District Governor with us before I retire from the Council of our own Governor.

With kind personal regards to you and your Rotary Ann, I am, Your friend, WEAVER BRIDGES.

THANKSGIVING PROGRAM TO BE GIVEN

Next Thursday, November 17, at 7:30 p. m., in the high school auditorium the third monthly meeting of the Parent Teachers Association of Farmville will be featured by a Thanksgiving program to be presented by Miss Lewis of the faculty. The main speaker of the evening will be Mrs. Claude P. Deady, who is Superintendent of Schools in Raleigh. A large crowd is expected to attend because of the high quality of the programs and plays which Miss Lewis has presented in the past.

Pitt Officers Wreck Still, Take One Man

Greenville, Nov. 9. — A 50-gallon copper still was destroyed and one man arrested after the meeting in Fountain township. It was the second still found in that area since the two special A. B. C. law enforcement officers, J. M. Taylor and A. L. Ward, were here in action.

Aiding the A. B. C. officers were Deputies R. W. King and R. W. Tyner and City Officer E. C. McMillan. Ward and Taylor "busted" the still yesterday afternoon, but it was not in operation and no one was in the plant. The officers returned about 1:30 o'clock this morning and found the still in operation, with about 30 gallons already being produced.

The man taken in custody in Helix, Fayette, 25, originally of Edgecombe County. He is being held in county jail in connection with a case of bootlegging.

Red Cross Roll Call For Farmville Nov. 12th to 14th

Chairman J. H. Moore Names Four Groups to Canvass for Membership.

"The Honor Certificate for the distinguished Roll Call achievement has been awarded your Chapter for its splendid success in the twenty-first Roll Call."

Signed: CARY T. GRAYSON, Chairman.

This tribute to the Pitt County Chapter was among the last acts of the late Chairman of the American Red Cross, and it was made possible by the splendid cooperation of you, and other workers in this worthy cause.

Again, we are being called upon to make the annual Red Cross Roll Call which will begin Saturday, November 12 and run through Monday, November 14, if necessary. OUR GOAL IS TWO HUNDRED MEMBERS.

The following young ladies have been selected to assist in the campaign this year: Group No. 1—Mrs. Mary Frier Rouse, chairman, assisted by Miss Hazel Monk, Mrs. W. A. Allen, Jr., and Mrs. Irvin Morgan, Jr.

Group No. 2—Mrs. James Whelless, chairman, assisted by Miss Vernice Lang Jones and Mrs. John D. Holmes.

Group No. 3—Mrs. R. S. Scott, chairman, assisted by Mrs. M. V. Jones.

Group No. 4—Mrs. David Harris, chairman, assisted by Mrs. Jesse Moye and Mrs. Will Moore.

Colored Section — H. B. Suggs, Group chairman will please organize your team for the campaign and I will furnish you with all the necessary supplies.

Last year's record was comparable to none—let's make this year's Roll Call—Nov. 12 and 14 a better one.

Cordially yours, J. H. MOORE, Roll Call Chairman.

One Per Cent

Out of nearly 5,000 tobacco allotments made in Columbus County only 190 growers have felt that they had cause for appeal. This is less than one-half of one per cent. Of the appeals heard, 67 were reviewed and changes made in 18 cases.

Japanese to Tell World That They Control Asia

Tokyo, Wednesday, Nov. 9. — Foreign Minister Hachiro Arida soon will issue an informal declaration warning the world that it must choose between Japan and Generalissimo Chiang Kai-Shek's nationalist government in shaping future relations with China, diplomats here said today.

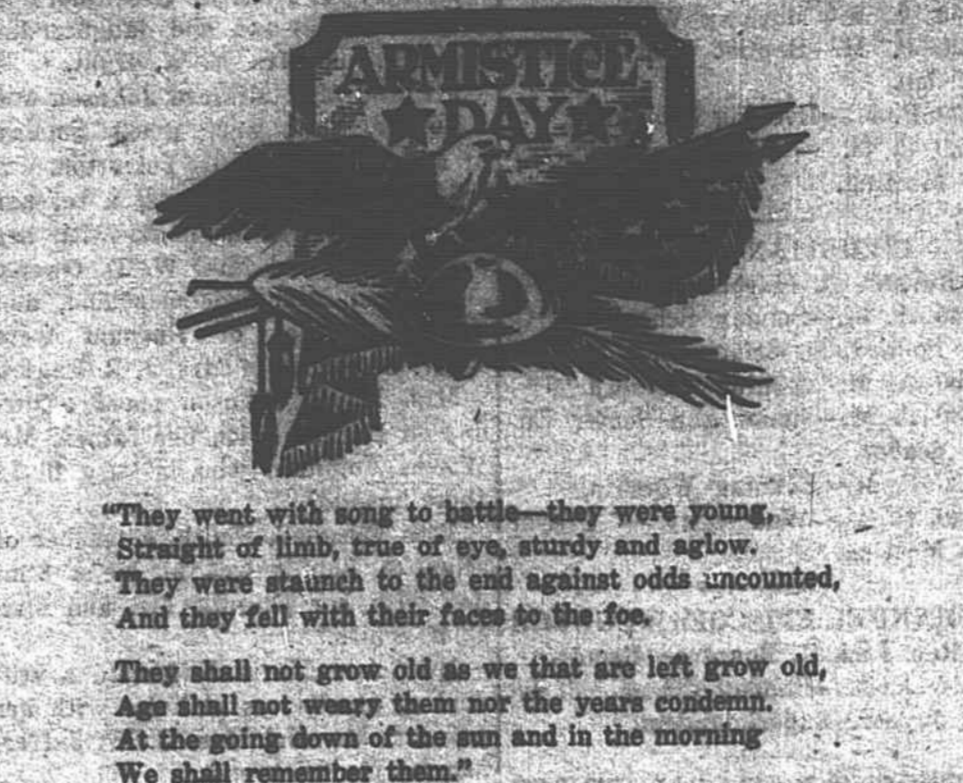
The statement, aimed primarily at Great Britain and the United States, may be made today following the foreign minister's return from the Grand Shogun of the island of Hawaii.

The assumption of office to the shogun of the imperial ancestors. Diplomats here said predictions on a statement released by the Dome news agency and their own investigations, said that the foreign minister will make these points:

1. Japan supports the American-announced doctrine of the "open doors" and equal opportunity for all nations in China providing the power still remains in Chinese hands and is the dominant power in Eastern Asia and the dominant power in this part of the world.

2. In the interest of world peace and prosperity, Japan expects the powers to cooperate with the proposed "Japan-China Manchuria" political and economic bloc which will bring about economic stability and prosperity in the region.

3. Japan supports that the United States, especially, take a realistic view of the present East Asia situation and recognize the necessity for close cooperation among Japan, China and Manchuria in building a new East Asia.



Highly Esteemed Woman Laid To Rest Friday

Final rites for Mrs. Lydia Newton Fountain, 60, wife of Robert A. Fountain, Sr., prominent in the State and one of the most highly esteemed women of Pitt County, were held from the Fountain Presbyterian Church Friday afternoon at 3:30 o'clock, by the pastor, Rev. H. M. Wilson, assisted by the Rev. C. B. Mashburn, pastor of the Farmville Christian Church, the Rev. Mr. Johnson, of the Fountain Baptist Church, and the Rev. Norman Johnson of the Presbyterian Church, of Rocky Mount.

The funeral was attended by a throng of friends, estimated at more than a thousand, and the floral offering was the largest and most beautiful of any seen in that community. The Presbyterian choir and members of other choirs of the town sang favorite hymns, including "How Firm A Foundation," "Beautiful Isle of Somewhere," "It is Well With My Soul" and "Whispering Hope."

In his tribute to Mrs. Fountain, the Rev. Mr. Wilson, Mrs. Fountain's pastor for ten years, read portions of the thirty first chapter of Proverbs: "Who can find a virtuous woman for her price is far above rubies. She stretcheth forth her hand to the poor; she she reacheth forth her hands to the needy. Strength and honor are her clothing and she shall rejoice in time to come. Her children arise up and call her blessed; her husband also, and he praiseth her. . . . a woman that feareth the Lord, she shall be praised. Give her of the fruit of her hands; and let her own works praise her in the gates." and have personal testimony to Mrs. Fountain's strength of character, cheerful spirit, courage of conviction, diligence in her home and her abiding love for God, the Church and humanity; characteristic of a Christian woman, whose life inspired emulation.

Interment was made in the Fountain cemetery. She is survived by her husband, two daughters, Mrs. W. R. Harris, and Mrs. E. W. Hunt; two sons, R. A. Fountain, Jr., and J. N. Fountain, all of Fountain; two brothers, Walter Newton of near Fountain, and John Newton of Enfield, and six grand-children, Betty White and B. A. Fountain, the third, John N. Fountain, Jr., Ann Fountain Harris, James Barker Fountain, and E. W. Hunt, Jr.

The death of Mrs. Fountain occurred early Thursday morning in Pitt General Hospital, and terminated a critical illness of six weeks duration.

She was the daughter of the late Walter and Mrs. Alle King Newton, thirty years of active service to the Fountain F. F. A. Women's Club and movements tending towards the betterment of her community, her chief interest lay in the Presbyterian Church, and the erection of the present granite building was due largely to her efforts and influence.

Active ballbearers were nephews: Dr. William K. and Walter Newton of Wilkesboro; John Newton, of Enfield; George H. Fountain, of Enfield; Dr. Tracy Fountain, of Leggett; A. Frank and Edward Newton of Fountain.

No scoring was done in the third period. During the last quarter Farmville advanced the ball sixty yards towards their opponents goal and it seemed as if nothing could stop them when a near pass from center gave the other team the ball. Two minutes later they again came into possession of the ball and again took it all the way to their opponents ten yard line. Here the dispirited play took place. Farmville threw a forward pass which was intercepted by a South Edgecombe player in back of his own goal line. A Farmville man tackled by mistake a South Edgecombe man who didn't have the ball. As this point the South Edgecombe man who did have the ball threw it to the ground, making a free ball, and Nichols, a Farmville player, recovered it thus scoring a touchdown. However, because of darkness, the referee couldn't completely see the play and when the Farmville man tackled the man without the ball the referee declared a safety. At this point the game ended although there was still some playing left to be done.

The Thursday game will play its last game at home on their home field this year when they meet the strong Wilkesboro High School team. The starting time of the game has been moved up to three o'clock so that it can be over before the sun goes down.

The score by quarter follows: Farmville . . . 0 0 0 0 Total . . . 0 0 0 0 Touchdown: W. Phillips, B. Webb, Brock, Nichols, Robert Taylor, Dupree, Parker.

More Cattle Points Record

MARKET TO CLOSE NOVEMBER 10

At a meeting of the Farmville Board of Trade on Wednesday morning, it was decided to close the Farmville market for the 1938 season on Friday, November 11.

State Democrats Roll Up Large Majorities As Light Vote is Cast

Contests Close In Middle West

Democrats and Republicans Running Neck and Neck In Important Races.

Chicago, Nov. 8. — Republicans and Democrats ran close races for the Mid-West's top political posts tonight. Early returns in the key contests — waged about the New Deal issues in most states and watched for indications of farmers' reaction to the crop control programs — showed the rival candidates were virtually neck-and-neck.

Senator Robert J. Bulkley, New Deal Democrat, was locked in a close quarter fight with Republican Robert A. Taft in Ohio's senatorial battle. The clear-cut issue there was the New Deal. Taft, son of the 27th President of the United States and considered a likely prospect for a high place on the Republican ticket in 1940, criticized the policies of the Roosevelt administration.

Another close struggle developed in Ohio's gubernatorial election, pitting Democrat Charles Sawyer against Republican John W. Bricker. First reports from Indiana's Senatorial dual found Senator Frederick van Nuys, Democratic incumbent, pressed by his Republican opponent, Raymond E. Willis, Angola editor.

Initial returns in Michigan's gubernatorial contest — termed "vitally important" by President Roosevelt — favored Frank D. Fitzgerald, Republican, seeking to unseat Governor Frank Murphy, Democrat, who was endorsed by President Roosevelt. Fitzgerald urged the defeat of his opponent to end "industrial strife." Mr. Roosevelt intervened in the election with a statement describing Murphy's handling of the 1937 sit-down strikes as a "great achievement of a great American."

Lucas Ahead. A margin compiled in Chicago put Scott W. Lucas, Democratic entry, ahead of Richard J. Lyons, Republican, in the Senatorial contest in Illinois. Lyons, forthright foe of the state and national Democratic administrations, took an advantage downstate, the stronghold of his party. The bulk of the reports were from the metropolitan area, a Democratic citadel.

Farmville Battles South Edgecombe In Rough Game

Last Friday's high school football game was the most thrilling game that has yet been played on the new field this year despite the fact that it ended in darkness and in a disputed score.

The first touchdown was scored on the kick-off when W. Phillips received the ball for South Edgecombe and after fumbling around for a few seconds ran ninety yards for a touchdown. B. Webb's attempt to convert the extra point was unsuccessful and this left South Edgecombe with a 6-0 lead. This advantage was short lived, however, because within five minutes, Billy Oglesby threw a pass from the 40-yard line to Linwood Brock and he ran across the goal line with the ball to tie the score. Robert Teale's attempt to place kick the extra point went wide of the mark and the first quarter ended in a 6-6 tie.

During the second quarter the two teams battled up and down the field, neither seeming able to score, until the last ten seconds of the half when South Edgecombe tried a lateral pass play which sent E. Webb across the goal line for a touchdown. B. Steadman's attempt for the extra point failed and this left the score at the end of the first half, 12-6 in favor of South Edgecombe.

No scoring was done in the third period. During the last quarter Farmville advanced the ball sixty yards towards their opponents goal and it seemed as if nothing could stop them when a near pass from center gave the other team the ball. Two minutes later they again came into possession of the ball and again took it all the way to their opponents ten yard line. Here the dispirited play took place. Farmville threw a forward pass which was intercepted by a South Edgecombe player in back of his own goal line. A Farmville man tackled by mistake a South Edgecombe man who didn't have the ball. As this point the South Edgecombe man who did have the ball threw it to the ground, making a free ball, and Nichols, a Farmville player, recovered it thus scoring a touchdown. However, because of darkness, the referee couldn't completely see the play and when the Farmville man tackled the man without the ball the referee declared a safety. At this point the game ended although there was still some playing left to be done.

The Thursday game will play its last game at home on their home field this year when they meet the strong Wilkesboro High School team. The starting time of the game has been moved up to three o'clock so that it can be over before the sun goes down.

The score by quarter follows: Farmville . . . 0 0 0 0 Total . . . 0 0 0 0 Touchdown: W. Phillips, B. Webb, Brock, Nichols, Robert Taylor, Dupree, Parker.

Two Pitt Men Lose Lives As Auto Overturns

Vanceboro, Nov. 9. — Elmer M. Venters, 37, of near Grimesland and Johnny Haddock, 33, of near Vanceboro, were killed instantly and two companions were injured about 6 o'clock tonight when the Hudson sedan in which they were riding toward home failed to take a sharp curve on the highway about ten miles south of Greenville.

Andrew Haddock, 24, and his brother, J. C. Haddock, 23, both of near Vanceboro, were taken to the Pitt General Hospital at Greenville to receive treatment for their injuries. Extent of their injuries had not been determined tonight.

No inquest was deemed necessary by Coroner A. A. Ellwanger of Pitt County. Venters was the driver and driver of the death car. The accident was investigated by Corporal L. J. Jackson of the State Highway patrol, who said that so far as he had been able to ascertain no other car was involved.

The four occupants had been sleeping in woods of the region during the afternoon, it was reported, and were hurrying home around dusk. Corporal Jackson estimated the car must have been traveling 70 miles an hour. Just after passing the curve, Haddock's car turned over several times before it settled in a ditch.

When the car rolled over, the four occupants were thrown clear of the car. The car was crushed and there was no evidence of a fire.

The men killed lived in the Shell Camp community of Pitt County. The car was a 1937 Hudson sedan.

The four occupants had been sleeping in woods of the region during the afternoon, it was reported, and were hurrying home around dusk. Corporal Jackson estimated the car must have been traveling 70 miles an hour. Just after passing the curve, Haddock's car turned over several times before it settled in a ditch.

When the car rolled over, the four occupants were thrown clear of the car. The car was crushed and there was no evidence of a fire.

The men killed lived in the Shell Camp community of Pitt County. The car was a 1937 Hudson sedan.

The four occupants had been sleeping in woods of the region during the afternoon, it was reported, and were hurrying home around dusk. Corporal Jackson estimated the car must have been traveling 70 miles an hour. Just after passing the curve, Haddock's car turned over several times before it settled in a ditch.

When the car rolled over, the four occupants were thrown clear of the car. The car was crushed and there was no evidence of a fire.

The men killed lived in the Shell Camp community of Pitt County. The car was a 1937 Hudson sedan.

The four occupants had been sleeping in woods of the region during the afternoon, it was reported, and were hurrying home around dusk. Corporal Jackson estimated the car must have been traveling 70 miles an hour. Just after passing the curve, Haddock's car turned over several times before it settled in a ditch.

When the car rolled over, the four occupants were thrown clear of the car. The car was crushed and there was no evidence of a fire.

The men killed lived in the Shell Camp community of Pitt County. The car was a 1937 Hudson sedan.

The four occupants had been sleeping in woods of the region during the afternoon, it was reported, and were hurrying home around dusk. Corporal Jackson estimated the car must have been traveling 70 miles an hour. Just after passing the curve, Haddock's car turned over several times before it settled in a ditch.

When the car rolled over, the four occupants were thrown clear of the car. The car was crushed and there was no evidence of a fire.

The men killed lived in the Shell Camp community of Pitt County. The car was a 1937 Hudson sedan.

The four occupants had been sleeping in woods of the region during the afternoon, it was reported, and were hurrying home around dusk. Corporal Jackson estimated the car must have been traveling 70 miles an hour. Just after passing the curve, Haddock's car turned over several times before it settled in a ditch.

When the car rolled over, the four occupants were thrown clear of the car. The car was crushed and there was no evidence of a fire.

The men killed lived in the Shell Camp community of Pitt County. The car was a 1937 Hudson sedan.

The four occupants had been sleeping in woods of the region during the afternoon, it was reported, and were hurrying home around dusk. Corporal Jackson estimated the car must have been traveling 70 miles an hour. Just after passing the curve, Haddock's car turned over several times before it settled in a ditch.

When the car rolled over, the four occupants were thrown clear of the car. The car was crushed and there was no evidence of a fire.

The men killed lived in the Shell Camp community of Pitt County. The car was a 1937 Hudson sedan.

The four occupants had been sleeping in woods of the region during the afternoon, it was reported, and were hurrying home around dusk. Corporal Jackson estimated the car must have been traveling 70 miles an hour. Just after passing the curve, Haddock's car turned over several times before it settled in a ditch.

When the car rolled over, the four occupants were thrown clear of the car. The car was crushed and there was no evidence of a fire.

The men killed lived in the Shell Camp community of Pitt County. The car was a 1937 Hudson sedan.

The four occupants had been sleeping in woods of the region during the afternoon, it was reported, and were hurrying home around dusk. Corporal Jackson estimated the car must have been traveling 70 miles an hour. Just after passing the curve, Haddock's car turned over several times before it settled in a ditch.

When the car rolled over, the four occupants were thrown clear of the car. The car was crushed and there was no evidence of a fire.

The men killed lived in the Shell Camp community of Pitt County. The car was a 1937 Hudson sedan.

The four occupants had been sleeping in woods of the region during the afternoon, it was reported, and were hurrying home around dusk. Corporal Jackson estimated the car must have been traveling 70 miles an hour. Just after passing the curve, Haddock's car turned over several times before it settled in a ditch.

When the car rolled over, the four occupants were thrown clear of the car. The car was crushed and there was no evidence of a fire.

The men killed lived in the Shell Camp community of Pitt County. The car was a 1937 Hudson sedan.

The four occupants had been sleeping in woods of the region during the afternoon, it was reported, and were hurrying home around dusk. Corporal Jackson estimated the car must have been traveling 70 miles an hour. Just after passing the curve, Haddock's car turned over several times before it settled in a ditch.

When the car rolled over, the four occupants were thrown clear of the car. The car was crushed and there was no evidence of a fire.

The men killed lived in the Shell Camp community of Pitt County. The car was a 1937 Hudson sedan.

The four occupants had been sleeping in woods of the region during the afternoon, it was reported, and were hurrying home around dusk. Corporal Jackson estimated the car must have been traveling 70 miles an hour. Just after passing the curve, Haddock's car turned over several times before it settled in a ditch.

When the car rolled over, the four occupants were thrown clear of the car. The car was crushed and there was no evidence of a fire.

The men killed lived in the Shell Camp community of Pitt County. The car was a 1937 Hudson sedan.

The four occupants had been sleeping in woods of the region during the afternoon, it was reported, and were hurrying home around dusk. Corporal Jackson estimated the car must have been traveling 70 miles an hour. Just after passing the curve, Haddock's car turned over several times before it settled in a ditch.

When the car rolled over, the four occupants were thrown clear of the car. The car was crushed and there was no evidence of a fire.

The men killed lived in the Shell Camp community of Pitt County. The car was a 1937 Hudson sedan.

The four occupants had been sleeping in woods of the region during the afternoon, it was reported, and were hurrying home around dusk. Corporal Jackson estimated the car must have been traveling 70 miles an hour. Just after passing the curve, Haddock's car turned over several times before it settled in a ditch.

When the car rolled over, the four occupants were thrown clear of the car. The car was crushed and there was no evidence of a fire.

The men killed lived in the Shell Camp community of Pitt County. The car was a 1937 Hudson sedan.

The four occupants had been sleeping in woods of the region during the afternoon, it was reported, and were hurrying home around dusk. Corporal Jackson estimated the car must have been traveling 70 miles an hour. Just after passing the curve, Haddock's car turned over several times before it settled in a ditch.

When the car rolled over, the four occupants were thrown clear of the car. The car was crushed and there was no evidence of a fire.

The men killed lived in the Shell Camp community of Pitt County. The car was a 1937 Hudson sedan.

The four occupants had been sleeping in woods of the region during the afternoon, it was reported, and were hurrying home around dusk. Corporal Jackson estimated the car must have been traveling 70 miles an hour. Just after passing the curve, Haddock's car turned over several times before it settled in a ditch.

When the car rolled over, the four occupants were thrown clear of the car. The car was crushed and there was no evidence of a fire.

The men killed lived in the Shell Camp community of Pitt County. The car was a 1937 Hudson sedan.

The four occupants had been sleeping in woods of the region during the afternoon, it was reported, and were hurrying home around dusk. Corporal Jackson estimated the car must have been traveling 70 miles an hour. Just after passing the curve, Haddock's car turned over several times before it settled in a ditch.

When the car rolled over, the four occupants were thrown clear of the car. The car was crushed and there was no evidence of a fire.

The men killed lived in the Shell Camp community of Pitt County. The car was a 1937 Hudson sedan.

The four occupants had been sleeping in woods of the region during the afternoon, it was reported, and were hurrying home around dusk. Corporal Jackson estimated the car must have been traveling 70 miles an hour. Just after passing the curve, Haddock's car turned over several times before it settled in a ditch.

When the car rolled over, the four occupants were thrown clear of the car. The car was crushed and there was no evidence of a fire.

The men killed lived in the Shell Camp community of Pitt County. The car was a 1937 Hudson sedan.

The four occupants had been sleeping in woods of the region during the afternoon, it was reported, and were hurrying home around dusk. Corporal Jackson estimated the car must have been traveling 70 miles an hour. Just after passing the curve, Haddock's car turned over several times before it settled in a ditch.

When the car rolled over, the four occupants were thrown clear of the car. The car was crushed and there was no evidence of a fire.

The men killed lived in the Shell Camp community of Pitt County. The car was a 1937 Hudson sedan.

The four occupants had been sleeping in woods of the region during the afternoon, it was reported, and were hurrying home around dusk. Corporal Jackson estimated the car must have been traveling 70 miles an hour. Just after passing the curve, Haddock's car turned over several times before it settled in a ditch.

When the car rolled over, the four occupants were thrown clear of the car. The car was crushed and there was no evidence of a fire.

The men killed lived in the Shell Camp community of Pitt County. The car was a 1937 Hudson sedan.

The four occupants had been sleeping in woods of the region during the afternoon, it was reported, and were hurrying home around dusk. Corporal Jackson estimated the car must have been traveling 70 miles an hour. Just after passing the curve, Haddock's car turned over several times before it settled in a ditch.

When the car rolled over, the four occupants were thrown clear of the car. The car was crushed and there was no evidence of a fire.