



FARMVILLE HIGH SCHOOL GIRLS BASKETBALL TEAM

Reading from left to right, front row, Joyce Tyson, guard, Betsy Morris, guard, Margaret Williams, forward, Ann Moore, center, Daphne Yelverton, guard, Stacie Mosley, guard, Lois Gray Kemp, guard; middle row, Ailie Walston, guard, Dora Mae Barrett, guard, Beulah Causey, guard, Faye Corbett, guard, Billy Johnson, guard; back row, Jean Baker, forward, Bettie Wainright, forward, Betsy Jones, forward, Jean Bynum, Forward. Several players were absent at the time this picture was taken, including Marjorie Killbrew, high scoring forward.

BASKETBALL NOTES

Farmville girls have won 10 games, lost two and tied one. They lost to Arthur by a score of 14 to 11, and to Chicod by a score of 38 to 28, and tied Arthur 35 to 35.

The Farmville girls have defeated Ayden 18 to 6; Snow Hill 26 to 8, and 58 to 26; Belvoir 37 to 12, and 32 to 13; Grimesland 39 to 22; Bethel 40 to 15; Stantonsburg 26 to 13; Washington 27 to 15; Walstonburg 13 to 9. The two Arthur games and the Walstonburg game were played without the services of Marjorie Killbrew.

Farmville will play three games at home next week; meeting Walstonburg Tuesday night, Chicod Wednesday night and Grifton Friday night.

In spite of the fact that the Farmville girls' team lost so many players by graduation, it has developed into one of the best teams in Eastern Carolina. They always play the game with lots of pep and enthusiasm and are noted for their hard work, cooperation and sportsmanlike conduct.

After losing such outstanding players by graduation last year as Johnnie Moore, Margaret Bynum, Jane Turnage and Mary Leah Thorne, the present sextet is determined to maintain the fine record set by the girls last year. Farmville won the County Championship last year.

Check the Enterprise next week for a record of the boys. They have also won ten games out of 13 played.

In recognition of agriculture's vital interest in the disposition of surplus property, an Agriculture Policy Committee has been appointed by the Surplus Property Administration.

COUNTY HEALTH NOTES

We have been informed by the Pitt County Health Officer, Dr. N. Thomas E. Smith, that Dr. J. K. Barnhill, a dentist in the Negro Division of the State Mouth Health Program, reported for work in the Pitt County colored schools Monday, January 7.

According to Dr. Smith, Dr. Barnhill has served the Pitt County schools over a period of several years most acceptably. He will continue the work in the County for the next six weeks.

We learned that the State Board of Health on account of the shortage of white dentists, is at present unable to furnish a dentist for the white schools, but the Health Officer has been assured by Dr. E. A. Branch, Director of the State Mouth Health Program, that a white dentist will be furnished at the earliest possible date.

The expense of making high crop yields and high livestock production is justified by increased profits to farmers, Dean I. O. Schaub of the State Extension Service, declares.

NOTICE

Ordinance Authorizing Withdrawal of \$10,000 From the Capital Reserve Fund of the Town of Farmville For the Purchase of Equipment.

BE IT ORDAINED by the Board of Commissioners of the Town of Farmville, North Carolina:

Section 1. That pursuant to the Municipal Capital Reserve Act of 1943, withdrawal from the capital reserve fund of the Town of Farmville of the amount of \$10,000 for necessary expenses and for the purpose of purchasing street maintenance equipment and sanitary equipment for said Town is hereby authorized.

Sec. 2. That the source of money in said capital reserve fund for said withdrawal is unappropriated surplus revenues and unencumbered balances, as follows, viz:

Receipts from revenues derived from sources other than ad valorem taxes, specifically revenues derived from the operation of the water and electric light systems of the Town, which are not pledged or otherwise applicable by law to the payment of

Advertisement for Southern Bread. It features a cartoon illustration of a man and a woman in a kitchen. The man is holding a loaf of bread and saying, 'SEE? HAVEN'T I TOLD YOU SO? ENRICHED SOUTHERN BREAD GIVES YOU QUICK ENERGY!!'. The woman replies, 'SEE-SEE!'. Below the illustration, it says 'Southern Bread' and 'MADE WITH ENRICHED FLOUR'.

Advertisement for Henry Renfrew Photography. It says 'HENRY RENFREW PORTRAITURE and COMMERCIAL Photography IN YOUR HOME BY APPOINTMENT PHONE 3252 301 EASTERN STREET, GREENVILLE, N.C.'

existing debt. The foregoing ordinance was passed on the 11th day of January, 1946 and was first published on the 18th day of January, 1946. Any action or proceeding questioning the validity of said ordinance must be commenced within thirty days after its first publication. R. A. JOYNER, TOWN CLERK.

March of Dimes Symbol

Advertisement for the March of Dimes. It features a portrait of Franklin D. Roosevelt and the text 'Fight Infantile Paralysis' and 'It did not conquer him'. Below the portrait, it says 'THE NATIONAL FOUNDATION FOR INFANTILE PARALYSIS'.

For millions of Americans, Franklin D. Roosevelt, who refused to accept defeat from infantile paralysis, symbolized the nation's fight against the Great Crippler organized and directed by the National Foundation for Infantile Paralysis, which the late President founded. The above poster was prepared by the National Foundation for its 1946 March of Dimes, January 14-31.

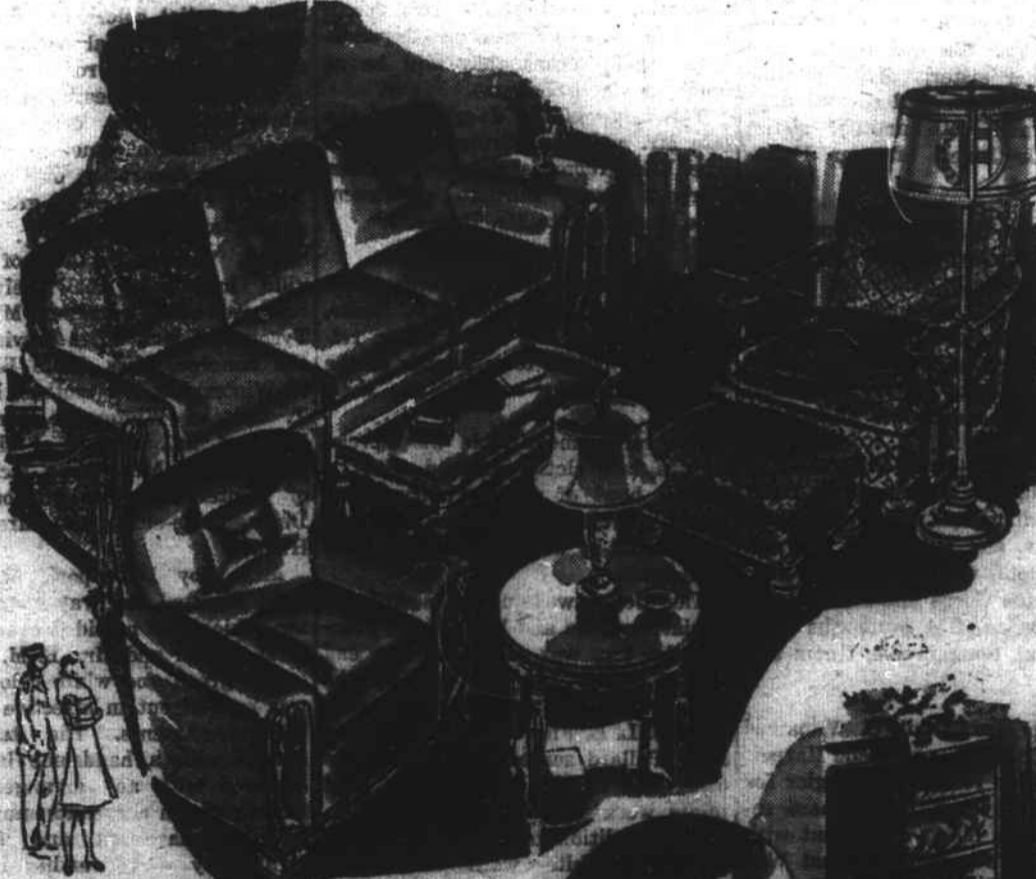
Advertisement for Farmville Furniture Co. It says 'EYES RIGHT... FOR THIS COMPLETE HOME OUTFIT' and shows illustrations of a living room and a bedroom.

3 LUXURIOUS ROOMS EASY TERMS designed to make shopping easier and simpler for returned-service men and their wives. A full line of accessories for each room.

An Inviting LIVING - ROOM

- 3 Pc. Matched Suites from \$89.00
2 Pc. Matched Suites from \$119.00
Sheraton, Lawson, Duncan Phyfe Sofas from \$114.00
Broadfelt Rugs, 9 x 12... blue green, burgundy, red - only \$36.00

A full line Cocktail, End and Lamp Tables, table and Floor Lamps.

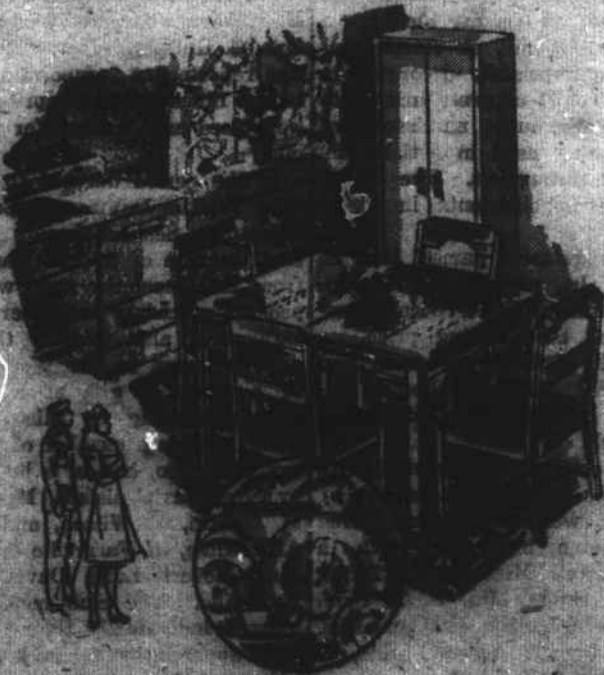


BED - ROOM SUITES

- 4 and 5 Pc. Suites - 4 Pc. Walnut Finish Only \$79.00
Birch Wood, Mahogany finish 5 pc. include Nite Stand \$144.50 and Bench \$205.00
5 Pcs. Solid and Genuine Mahogany Poster Bed, Vanity, Chest on Chest, Nite Stand and Bench - Only \$205.00
Twin Bed Suites, Maple and Mahogany - a large display Boxsprings and Mattresses.

DINETTE SUITES

- 5 Pcs. Padded Leatherette Seats, White Oak finish - red decorated... Only \$49.00
5 Pcs. Plastic Top, withstands heat, acids, water, fruit juices, padded leatherette shield-back chairs \$79.00
Utility Cabinets - Ice Refrigerators.



Farmville Furniture Co. (FASHION SHOP FOR THE HOME)

MAIN STREET FARMVILLE, N. C.

Triple-Fresh Breads

SANDWICH 1 1/2-lb Loaf 11c

OUR PRIDE 2 16-oz Loaves 15c

PENDER QUALITY FOOD STORES

- Armour's Treet 12-oz Can 34c
Spry Shortening 1-lb Jar 24c
Pillsbury's CAKE FLOUR 2 3/4-lb Pkg 28c
Lynnhaven Mustard 1/2 Jar 11c
Tetley Tea Bags 16 to 20 PKG 15c
Rockwood's Cocoa 8-oz Can 10c
Mother's Quick Oats Regular Pkg 12c
Nabisco Ritz Crackers 1-Pound Pkg 24c
Gibb's Brand Spinach No. 2 1/2 Can 20c

- Double-Fresh Gold Label COFFEE 1-lb Bag 24c
Whitehouse Apple Sauce No. 2 Can 18c
Artesian Brand Sweet Peas No. 2 Can 15c

SOUTHERN MANOR

- Tea Bags 16 to Package 11c
Protecto Easy Matches Pkg 10c
Pine Flax Gold Medal 5-lb Bag 36c
Sherrill's Celery Greens No. 2 1/2 Can 14c
Squeezed Romaine 1-lb Cello 37c
Lump's Pickles Quart Bottle 27c
Free Range Cold Mollusks 16-oz Jar 23c

- POTATOES Idaho Baking 5 lbs. 30c
LETTUCE Crisp Western Size 60 to Crato 2 heads 15c
GRAPEFRUIT Texas Pink Meat-6 1/2's 3 for 22c
CELERY Well Bleached Golden Heart-48 to Crato-Stalk 10c
Kilo Dried Sweet Potatoes 3 lbs. 29c
New Crop Florida Green Cabbage 4 lbs. 15c
Albemarle Pippin Apples 2 lbs. 25c
Juice-Sweet Easy To Peel TEMPLE ORANGES 5 lbs. 43c

The Miller's Masterpiece COLONIAL'S BEST PLAIN FLOUR 5-lb Bag 32c 10-lb Bag 61c

- Swan Soap Regular Cdn 6c Large Cdn 10c
Del-Tox Bleach 15c
Book Matches 2 25c
Wesson Salad Oil Pint 29c
Snowdrift Bleaching 1-lb Jar 24c