

# The News - Journal

The Hoke County News- Established 1928

The Hoke County Journal - Established 1905

VOLUME LXIV NUMBER 15

RAEFORD, HOKE COUNTY, NORTH CAROLINA

\$4 PER YEAR 10¢ PER COPY

THURSDAY, AUGUST 22, 1968



**FUNNY STUFF**—Republican gubernatorial candidate Jim Gardner and Mrs. Ed Manning of Raeford have a big laugh over uncomplimentary remarks about him attributed by the press to his opponent, Democrat Bob Scott. Mrs. Manning was chief hostess at a social hour held here for Gardner last Wednesday.

## GOP's Jim Gardner Campaigns In Area

During a two-day visit in this area, Republican gubernatorial candidate Jim Gardner stopped off in Raeford, visited with people in and around the courthouse and he and his traveling companions greeted guests at a cola hour held for him Thursday at Hoke Civic Center by some local female supporters.

Gardner said he is receiving support from "thousands of Democrats." He introduced one of his co-workers as a man "who has switched from a Democrat to a Republican."

The Republican Congressman from the

fourth district expects GOP presidential candidate Richard Nixon to carry North Carolina, with George Wallace coming in second and Hubert Humphrey third.

Touching on the highway situation in the area, he said there has been a "tremendous lack of planning and our people were asleep when the federal highway program was started."

Gardner also visited Lumberton and returned to Fayetteville for a couple of appointments there late Thursday afternoon and night.

## Mrs. C.P. Kinlaw Dies At Age 50

Funeral services for Mrs. Clara Stroud Kinlaw, 50, wife of Raeford jeweler C.P. Kinlaw, were conducted at First Baptist Church Saturday at 4 p.m. by the Rev. Jack Mansfield and the Rev. John Glenn.

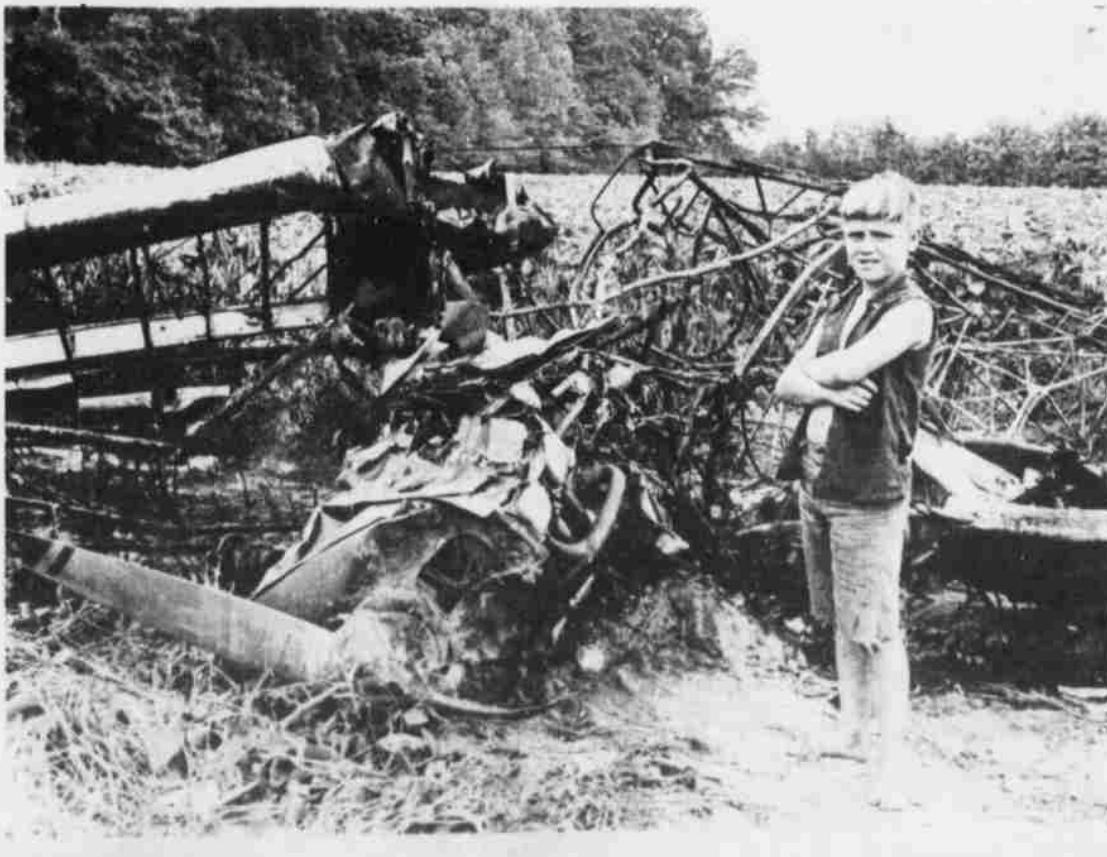
Mrs. Kinlaw died Friday in Moore Memorial Hospital after an extended illness.

A native of South Carolina, she was a daughter of G.W. and Mary Hinson Stroud. She was a member of First Baptist Church and a Sunday School teacher for the past 27 years. Her current class of juniors attended the funeral

service in a body.

She was active in the Woman's Missionary Union and was a member of the American Home Department of the Woman's Club.

She is survived by her husband; two daughters, Mrs. Peggy Lewis of Southern Pines and Mrs. Betty Simmons of Louisville, Ky.; one brother, Clarence Stroud of Bladenboro; four sisters, Mrs. E.G. Smith, Mrs. Elizabeth Poulos and Mrs. Ellen Britt, all of Lumberton, and Mrs. Ann Mullroy of Washington and one grandchild.



**PILOT KILLED**—This is the remains of a crop dusting airplane owned by Roy Wood of Raeford following a crash near Parkton Monday afternoon. Indications were that the plane probably stalled during a low-level turn and plunged nose-first

into a soybean field near the Robeson-Cumberland line. The pilot, Paul Lundberg of Fayetteville, apparently died instantly. His body was burned beyond recognition.

## Minimum Confusion Hoped

# Hoke School Problems Ironed Out For Opening

## Firefighters To Compete Wednesday

Five local volunteer fire departments will compete here Wednesday afternoon, August 28, in Raeford-Hoke Chamber of Commerce's second annual firemen's day.

The competition was inaugurated last year to pay tribute to volunteer firemen and to display their proficiency.

This year, firemen will compete in five contests, including a ladder rescue, a barrel fill, a pit fire putout, a barrel roll, and a bucket slide.

Competing departments will include Raeford, North Raeford, Hillcrest, Puppy Creek and Rockfish.

The contests will be staged on Stewart Street in the block between Edinborough and Donaldson Avenues. The first contest will begin at 2 p.m.

Plaques will be awarded to winning departments in each of the contests, plus an engraved plaque for the overall winner. Here's the way each of the contests will be conducted.

**LADDER RESCUE**—A "victim" will be "trapped" atop J. W. McLaughlin School. A rescue team from each department will in turn "rescue" the trapped citizen. Beginning at a starting point, firemen will unload and hoist a ladder. Firemen will ascend the ladder, recover the victim, and bring the person down the ladder. Judging is on the basis of time.

**BARREL FILL**—A team from each department will in turn begin from a standing start, drive their fire truck a specified distance, stop, connect their pumper hose to a fire hydrant, and fill a 55-gallon barrel with water. This, too, is a timed event.

**PIT FIRE**—Each team will start, drive, and stop their fire truck, connect to a hydrant, and extinguish an oil fire burning atop water in a pit. Again, the quickest performance wins.

**BARREL ROLL**—Two teams will direct a stream of water, from opposite directions, trying to roll against the opposing force and across a finish line.

**BUCKET SLIDE**—This contest is similar to the barrel roll, except the target is a bucket mounted on a clothesline and movable in both directions.



Town Manager John D. Gaddy

## Town Manager Assumes Post

John D. Gaddy, Raeford's new town manager, arrived here last Wednesday with his family of five. They are making their home at 507 East Donaldson Avenue.

"It was a hot day for moving," the former Bessemer City mayor said, "but the man who came to turn on the water (William Sellers) upon seeing our plight, went home and brought back a big pitcher of iced tea which saved the day."

In his office for the first day on Thursday, he commented that people had been nice in "making us feel welcome and in offering their help." He indicated, as he dived into a stack of mail which has been accumulating for the past 45 days, that he was likely to need some.

Gaddy succeeds Ed Williams, who vacated the job June 30. The new man was selected after a list of 12 applicants had been sifted down to 3, Mayor H. R. McLean said, as he introduced the newcomer Thursday.

Mr. and Mrs. Gaddy have three children with them, Chris 13, Lynn 11, and Sara 9. Another daughter, Mrs. Keith Calhoun, remained in Bessemer City.

A minimum of confusion when seven grades of Hoke County schools open on a fully integrated basis two weeks hence is the fond hope of school officials here.

Donald D. Abernethy, superintendent of schools, said it probably will take several days to refine new bus routes, but otherwise, no great difficulty is expected.

All classes in grades six through 12 will be totally integrated this year, with the first five grades scheduled for integration at the beginning of the 1969-70 school year.

Abernethy revealed that assignment, perhaps temporary, has been made for grades one through five at Upchurch School, which this year will house all elementary students in grades six through eight.

"Grades one and two from Upchurch will attend classes at Scurlock," Abernethy said. "Grades three and four will go to West Hoke, and grade five will go to Raeford Elementary."

Since freedom of choice in assignment has been nullified, all other students in grades one through five will be assigned according to the school they attended last year.

First graders who have had no previous school assignment will be housed at the schools where they attended pre-school registration last spring, Abernethy said.

He revealed that a transportation specialist from N. C. Board of Education spent four days here last week re-routing all buses, which also will be totally integrated this year. In previous years, separate buses were provided for white,

Negro and Indian children.

"For the first several days of school, we expect some crowded conditions on buses," Abernethy said. "We will work out these difficulties as fast as possible."

Abernethy said Raeford children attending Upchurch School are eligible for bus transportation, provided they live at least one and a half miles from the school.

"Pickup stations will be established at various points in town, where students will congregate to await buses," Abernethy said. "Obviously, we won't be able to establish bus routes down every street in town."

Raeford students attending Hoke High School, except those who live in areas annexed since 1957, are not eligible for bus transportation, Abernethy said, regardless of the distance from their homes to the school.

Hoke High students who live in the suburban areas outside the town will qualify for bus transportation only if they live a mile and one-half from town.

Abernethy said adequate classroom space will be available, although several classrooms were lost when Burlington School closed last spring.

Two mobile classrooms have been built at the new W. T. Gibson School, which now is a part of Hoke High School. The classrooms were erected by local school maintenance men, Abernethy said. Instead of \$6,000 apiece, which would have been the price tag had they been bought, the classrooms were built for about \$2,000 each, Abernethy said.

## Trio Convicted Of Armed Theft

Three young men accused of robbing a minister in distress whom they stopped to "help" were convicted in Hoke Superior Court this week and received sentences of five to seven years apiece.

Judge E. Maurice Braswell handed down that judgment against Ernest Lee Locklear, 19, of the Buie section of Robeson County, Ervin Dean Oxendine, 20, Red Springs Rt. 4, and Charles Willard Dial, 20, Red Springs Rt. 4.

Testimony indicated the trio used force and arms to take \$110 from the Rev. Quincy Harvey of Southern Pines last December 17 on N.C. 211 near the Robeson County line.

Evidence was that the Rev. Mr. Harvey

was stranded with a flat tire on his automobile when the trio drove up, offered to help, then robbed the preacher.

Judge Braswell recessed court Wednesday because he had to be away from the county. The one-week criminal term was scheduled to be resumed this morning.

Meanwhile, Judge Braswell added sentences to three inmates who escaped from the prison unit at McCain, the added time to begin at the expiration of the sentences they are now serving.

The escapes were Craig Shupling, Perry

(See CONVICTED, Page 7)

## Lowly Soybean Is Gaining Ground As Hoke's Biggest Crop, By Acres

Soybeans, once a minor crop in the Southland, has emerged as the number one crop in terms of acreage in Hoke County.

Last year, soybeans were harvested here from 20,490 acres, more than twice the acreage devoted to the next largest crop in the county.

That information was contained in the preliminary 1968 farm census summary, compiled by local agricultural agents for county commissioners and reported to the state and national departments of agriculture.

The swing to soybeans has been phenomenal. Farm agents declare it is because soybeans bring a reliable dollar yield with a minimum of labor required to grow and harvest them.

Adding to the soybean dominance during the past two seasons (1966 and 1967) were poor early growing seasons for cotton. A majority of the county's cotton crop those two years was plowed under and replaced by soybeans, a practice which salvaged at least part of the fertilizer applied to the abortive cotton crop.

Average soybean yield in Hoke County is about 25 bushels per acre, with the market price around \$2.50 per bushel.

At that rate, the 1967 crop in Hoke County was valued at some \$1.25 million. Tobacco continued to be the top

money crop. Although dollar yields were not reflected in the report, Hoke County's 2,457 harvested acres of tobacco is known to have yielded more than \$2 million last year.

Corn occupied the number two spot in acreage. The 8,041 acres devoted to corn was less than half the soybean crop, however, and was down 6 per cent from

the previous year.

The 1967 cotton crop was drastically curtailed. Only 3,209 acres of cotton was harvested, compared to 6,514 acres in 1966. The 1966 figure was considerably less than that for 1965.

Wheat for grain showed a marked increase, totaling 1,802 acres, compared

(See SOYBEANS, Page 7)

PERCENT OF TOTAL CROPS HARVESTED



UTILIZATION OF ALL LAND IN FARMS

