

Deaths & Funerals

Edwin Pate

The funeral for Edwin Pate, 84, president of the firm which operates Dundarrach Farms and Dundarrach Trading Co., was conducted June 16 in Laurinburg Presbyterian Church. Burial was in Hillside Cemetery, Laurinburg.

Mr. Pate served in the State Senate 1941-53 and as president pro tem of the Senate in 1953.

His firm, a family corporation, is Z.V. Pate, Inc. It operates stores and farms in several counties of Eastern North Carolina and in South Carolina.

Mr. Pate also was a former chairman of the State Ports Authority, and had served on the State Board of Education and State Board of Conservation and Development. He also was a former president of the North Carolina Bankers Association and was a former director of Southern Bell Telephone and Telegraph Co. and Durham Life Insurance Co. In 1967 he received the Distinguished Citizens Award of the North Carolina Citizens Association.

He was a 1921 graduate of North Carolina State College of Agriculture and Engineering (now N.C. State University) and once served as president of the school's Alumni Association.

Mr. Pate also had served as chairman of the Scotland County Memorial Hospital Board of Trustees and as a director of First Union National Bank of North Carolina.

He is survived by his wife, Mrs. Beverley Pate; and his sisters, Mrs. Sarah Townsend of Laurinburg and Mrs. Mary Currie of Fayetteville.

Pate Funeral Home of Laurel Hill was in charge of the arrangements.

Edith Ashburn Davis

Mrs. Edith Ashburn Davis, 54, died Monday, June 14, 1982, in the N.C. Cancer Institute.

Funeral services were conducted at 4:00 PM, Tuesday, at Raeford United Methodist Church by the Reverend Arthur Winstead and P. Wesley Aitken, Chaplain at Duke Hospital. Burial was in Raeford Cemetery. Pallbearers were nephews Michael Anthony, Randy Ashburn, David Mann, Bruce Mann, Michael Upchurch, David Upchurch.

Surviving are three sons, Jimmy Davis of Forest Lake, Minnesota, Johnny Davis of Raeford, and Steve Davis of Miramar, Florida; her mother Mrs. Arthur Ashburn of Raeford, her brother Randall Ashburn of Raeford; three sisters, Mollie Anthony of Harmony, Margie Mann of Lillington, and Betty Upchurch of Durham; six grandchildren.

The Rev. J.R. McAllister
The Rev. J.R. McAllister of Rt. 1, Raeford, died Saturday.

The funeral was conducted Tuesday afternoon in Piney Grove Baptist Church by the Rev. Sherman Brooks. Burial was in the McAllister family cemetery.

Doby's funeral Home was in charge of the arrangements.



WAGON WHEEL RESTAURANT
THURSDAY & FRIDAY
SHRIMP BASKET
(about 20 shrimp)
with FF, Slaw & Hushpuppies
\$3.99
Take Out Orders Call 875-6762

WANTED - RYE Gurley's Grain Market

Timberland, N.C.
875-4539
1-800-672-8131

Almost Everyone Can Own A New Home!



\$18,600 to \$33,000
ON YOUR LOT

100% FINANCING ON YOUR LOT

This plan is new
The idea is as old as creation
You have the land
Select one of our home plans or furnish your own
We install a continuous brick foundation, brick steps, build the exterior of the house complete with two (2) coats of paint or stain. Energy Efficient. includes insulated glass windows, steel faced doors and insulated side wall subsheathing

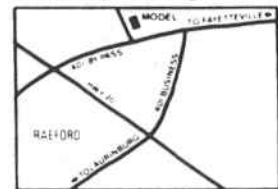
We furnish plans and cost estimates for all interior finish work
You do-it-yourself or subcontract the interior.
You save six (6) to eight (8) dollars per square foot
We offer 100% financing for the finished exterior.
You have the pride of being a do-it-yourselfer and build thousands of dollars of equity in your home

Open House

FRIDAY - Open till dark
SATURDAY - 10 A.M. till dark
SUNDAY - 1 P.M. till dark

REGISTER FOR FREE
DOOR PRIZE

Must be 18 years of age or older



Model and sales office located approximately 2 miles north of Raeford on U.S. 401 by-pass

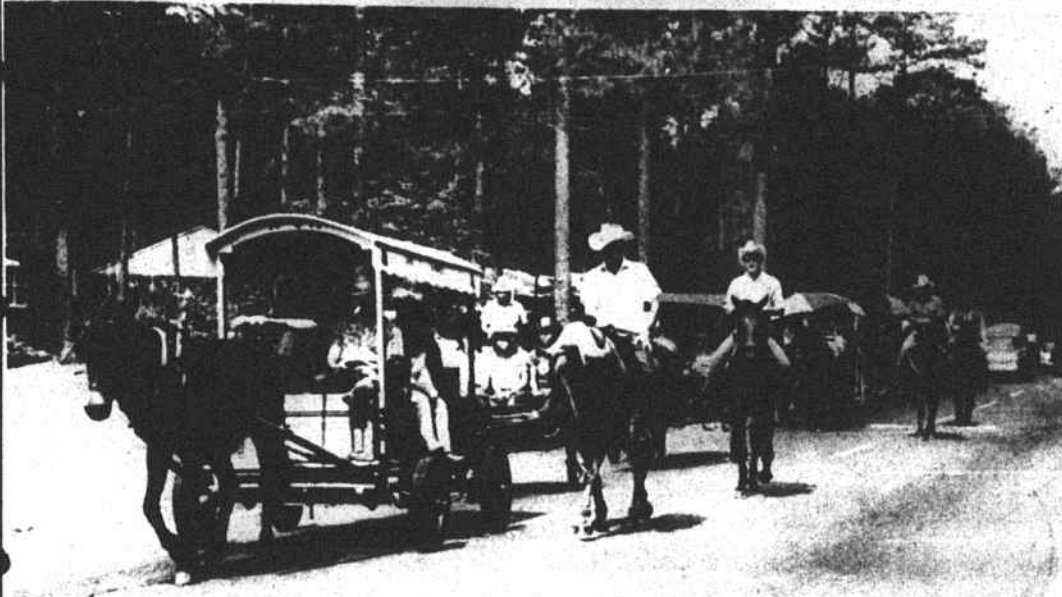
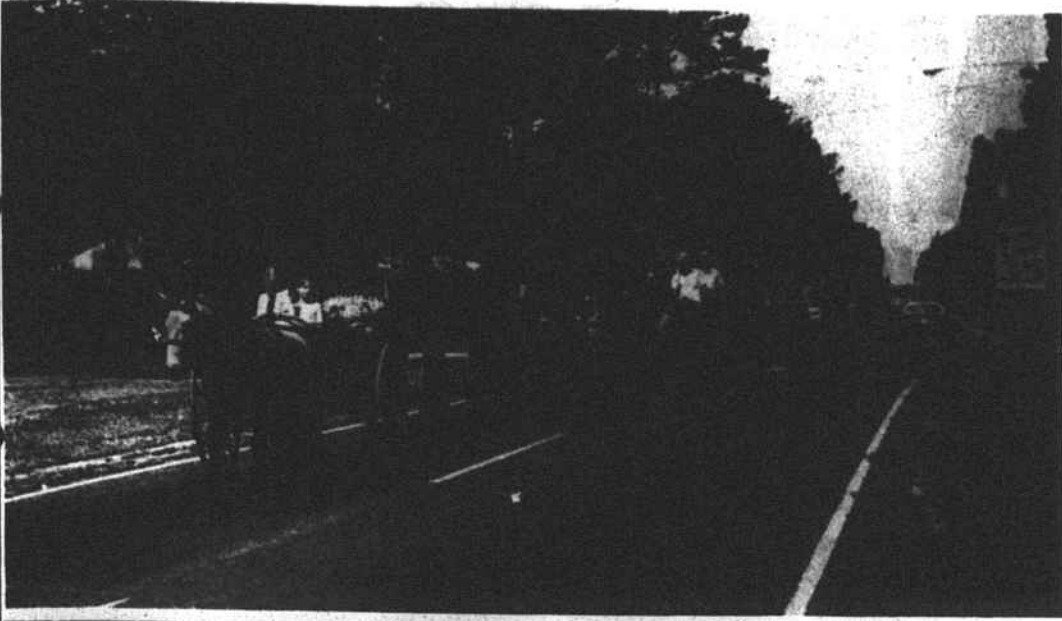
FOR ADDITIONAL INFORMATION AND FLOOR PLAN SHEETS, FILL OUT AND MAIL TO:

ELWOOD CAIN & ASSOCIATES
P.O. Box 1028
Raeford, North Carolina 28376

Please send free home plan sheets
Please have representative contact me
OWN A LOT Yes No

Name _____
Address _____
City _____ State _____ Zip _____
Phone _____ If rural route give directions

ELWOOD CAIN & ASSOC. Raeford Model & Office 875-2173
Fayetteville Office 483-1785



WAGON TRAIN -- The annual Wagon Train trip of men, women, and children of Hoke and Robeson counties passed through Raeford Friday morning from the assembly area at Oakdale Gin heading for the camp ground at the Raeford Airport. These pictures were taken as the train was traveling east on East Prospect Avenue. About 100 people on horseback and in oldtime wagons, buggies and similar vehicles were on the road, but more were due to join them at camp after finishing their day's work on their regular jobs. The camp started Friday and went into Sunday.

Over 25 Years Service

Black Retires From Burlington

Kelly C. Black recently retired from the Dyeing Plant of Burlington Industries after over 25 years of continuous service.

Kelly joined Burlington in October 1956 as a weaver; soon afterward he moved into the Color Control area where he served in

several positions until assuming his last position as Color Control technician, where he worked until his retirement on June 7.

In addition to a retirement luncheon and several gifts from his fellow employees, Kelly received a

Retirement Plaque and a Retirement Bible in recognition of the event.

Participating in the formal presentation to Black were Gib Bernhardt, plant manager; Tommy Summers, Color Control manager; and Bill Burk, technical manager.

SOCIAL NEWS 875-2121

Leslie's Garage & Wrecker Service

107 S. Maint St.

Cooling System Specialists

•AUTOMOTIVE •INDUSTRIAL •TRUCKS

Expert radiator and heater service:

- Cleaning
- Repairing
- Recoring
- Rebuilding
- Air conditioning
- Gas tank repair



Pick up and delivery service

Call us:

875-4078
875-4775



UNITED CAROLINA BANK
ucb

DIRECT DEPOSIT

Why take the chance of mail box theft, losing or simply misplacing your monthly Social Security check?

We are federally insured for up to \$100,000 to safeguard your money. Just let the U.S. Treasury Department make a direct deposit by mail.

All Kinds of Services
For All Kinds of People

Member FDIC
RAEFORD, N.C.