

Lunch Price Policy Cited

The Hoke County Board of Education announced its policy for free and reduced-price meals for children served under the National School Lunch, and School Breakfast Programs.

School officials have adopted the following family size and income standards for determining eligibility:

Family Size	Eligibility Scale For Free Meals		
	Per Year	Per Month	Per Week
1	\$ 6,080	507	117
2	8,090	674	156
3	10,090	841	194
4	12,090	1,008	233
5	14,090	1,174	271
6	16,090	1,341	309
7	18,100	1,508	348
8	20,100	1,675	387

Family Size	Eligibility Scale For Reduced-Price Meals		
	Per Year	Per Month	Per Week
1	\$ 8,660	\$ 722	\$ 167

2	11,510	959	221
3	14,360	1,197	276
4	17,210	1,434	331
5	20,050	1,671	386
6	22,900	1,908	440
7	25,750	2,146	495
8	28,600	2,383	550

Children from families whose income is at or below the levels shown are eligible for free or reduced-price meals. Application forms are being sent in a letter to parents. Additional copies are available at the office in each school. The information provided on the application is confidential and will be used only for the purpose of determining eligibility. Applications may be submitted at any time during the year. A statement of family income size including household member names, social security numbers of all adults or an indication that a household member does not have one, is required, plus a signed certification by the parent, guardian, or other

adult household member that the information provided is correct.

An application which does not contain the above complete information cannot be approved. Parents may request assistance from the school official in filling out the form.

Under the provision of the policy the principal will review application and determine eligibility. If a parent is dissatisfied with the decision of the determining official, he or she may wish to discuss it with the official on an informal basis. If a parent wishes to make a formal appeal, he or she may make a request either orally or in writing to: G.R. Autry, Superintendent, 310 Wooley Street, Raeford, N.C. 28376 for a hearing to appeal the decision. An outline of the hearing procedure is on file at each school.

The information on the application may be checked by the school or other officials at any time during the year.

Children in grades K-9 for the 1982-1983 school year that filled out a lunchroom application and were approved last year will NOT be required to submit a new application this year unless there has been a change in salary or family size.

Families are required to report income increases by more than \$50 per month (or \$600 per year) or when their household size decreases. Benefits may be applied for at any time during the school year.

If, during the year a family member becomes unemployed or if the family's size or income changes, the family should contact the school. Such changes may make the children of the family eligible for additional benefits, if the family income falls at or below the levels shown.

In certain cases foster children are eligible for program benefits. Parents should inform the school official if they have foster children in the household.

In the operation of child feeding programs, all children are treated the same regardless of ability to pay. No child is discriminated against because of race, sex, color, national origin, age or handicap.

Each school and the Hoke County Board of Education have a copy of the complete policy which may be reviewed by any interested party.



FOR PERFECT ATTENDANCE -- These women were honored last week by the management of the Raeford plant of Faberge, Inc., for having been on the job every workday for at least a year. In recognition of their conscientiousness, they were awarded the certificates they are holding. Maggie Galberth (left front) hasn't missed a day's work in three consecutive years. The other employees in the photo have had a year's perfect attendance up to dates in June and July. Front, next to Mrs. Galberth, is Vernella Campbell. Second row, L-R -- Marcia Smith, Jacqueline Duke, and Thelma Dillard. Third, L-R -- Lenora McPhatter, Patricia Galberth, Unellea Rogers, Elizabeth Bundy, and Wanda Hurst. Fourth, L-R -- Betty Luckie, Caroline Daniels, and Sandra Benton. In the rear is August Zitzman, Faberge's corporate vice president for manufacturing and the Raeford plant's general manager. [Staff photo by Pam Frederick].

Moore's

B. C. MOORE & SONS, INC.

EDENBOROUGH SHOPPING CENTER
9-9 DAILY CLOSED SUNDAY

Timely Savings for Back-To-School



long sleeve plaid flannel shirts

Choose from a variety of bold plaids in sizes S-M-L-XL.

SPECIAL PURCHASE **6⁹⁹**

Heritage® striped pull-on shirts

Polyester and cotton knit stripes including red, navy and khaki S-M-L-XL.

18⁹⁹



Juniors' Wrangler® work pants

Select pleated or traditional twill work pants with front belt loops. teal, khaki, lavender, kelly, navy and claret. Sizes 3 to 13 and 5 to 15.

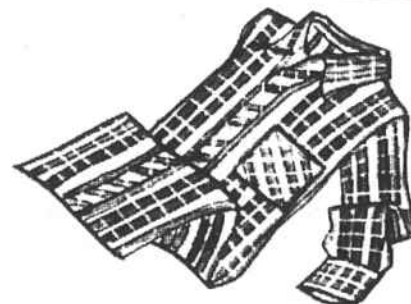
19⁹⁹



children's school jerseys

Polyester and cotton Raglan sleeves. College emblem on front. Sizes 8 to 20.

7⁹⁹



boys' woven plaid shirts

Dacron® polyester and 35% cotton. Assorted plaids in sizes 8 to 18.

8⁹⁹



teens' & girls' leather casuals

Unit sole Navy or mecca brown

girls' sizes 12½-4 **17⁹⁹**
teens' sizes 5-11 **20⁹⁹**



girls' one strap casuals

Leather uppers in navy or mecca brown. Unit sole.

Sizes 8½ to 12 **16⁹⁹**



ladies' smart kiltie casuals

All leather uppers in brown or tan. Sizes 5½ to 11.

20⁹⁹

adidas



Howard Clothiers

Main St.

Raeford, N.C.



Introductory Sale

Friday - Saturday

August 27 - 28



love your body.
flash adidas.

