

Lifestyles

Women's fall fashions have richer look

By Alice L. Pettitt
Home Extension Agent

This year's fall fashions for women will look rich, both in color and in texture. For example, the textures in wool fabrics and wool blends will run the gamut from nubby tweeds to houndstooth, plaids and checks. Even silks will offer a nubby look in day and evening sweaters.

When it comes to color, browns and neutrals are the new basics.

Accent colors include intense brights, such as fuchsia, electric blue and russett orange.

Fashion shapes are reminiscent of the thirties. If pants are your choice, flattering Hepburn pants—made of rich fabrics and full cut—are an important fashion statement. You can complete the look with a slouchy coat or classic jacket.

Skirt lengths go from long and full to mini. Other important

Front Burner

trends are the vest, cardigan dress and the hourglass "Marilyn Monroe" dress.

When it comes to fashion this fall, you men have a lot of choices. For example, you'll find sweaters are a big fashion item, with soft V-necks and crew necks the obvious favorites.

Bulky knits and tweeds will be especially popular — so men's clothes will be cut to fit loosely. Pants are baggy and pleated and jackets will hang straight down from the shoulders. Overcoats will vary from classic trenchcoat styles to bulky, pleated tweeds.

Colors and patterns emphasize the classic character of this year's fashions with argyles, stripes, houndstooth, plaids and checks all playing an important role.

boyant, but because they reflect quality styling.

Federal law requires that certain things appear on labels.

This year men's fashions are eye catching, not because they're flam-

For example, ingredients must be listed in descending order or quantity by weight. This gives you a food idea of what you're getting for your money — especially if water, sugar or salt is high on the ingredients list and meats and

vegetables are low on the same list.

Not every package has a full list of ingredients and there's a reason for this. The government has set standards of identity for some products, such as pasteurized process cheese, vanilla ice cream, mayonnaise and peanut butter. This means the basic contents must be the same, regardless of brand name.

Options, such as salt and flavor-

(Continued on page 5B)

Crape myrtle good choice for Hoke County landscape

By Willie Featherstone, Jr.
County Extension Chairman

Crape Myrtle is a favorite small tree or large shrub for many southern gardeners. The common name crape myrtle was derived from the crinkled petals on the end of the long, narrow stem and the similarity of the leaves to a myrtle. Crape myrtle, also known as "Flower of the South," performs beautifully in all areas of Hoke County. The plant is native of China.

It is somewhat rare for a flowering plant to have several landscape characteristics which can be as interesting as the flower. Crape myrtle possesses several: flowers, bark color and texture, form and shape, fall foliage color, and interesting seed pods which persist in the winter.

Crape myrtle has many landscape uses. One of the most successful is in urban or street tree planters. Because the ultimate height is that of a small tree (below 30'), and the roots can exist in a somewhat restricted area, the

Extension News

crape myrtle is ideal for use under utility lines and in traffic medians. Many homeowners use the crape myrtle as a specimen tree in a garden setting, often underplanting with groundcovers. When located in a shrub bed around the house, as a "foundation planting" the tree should be set at least 10 feet from the walls. Several new introductions of true dwarfs can be used in planters as a small, flowering, deciduous shrub.

Planting Site

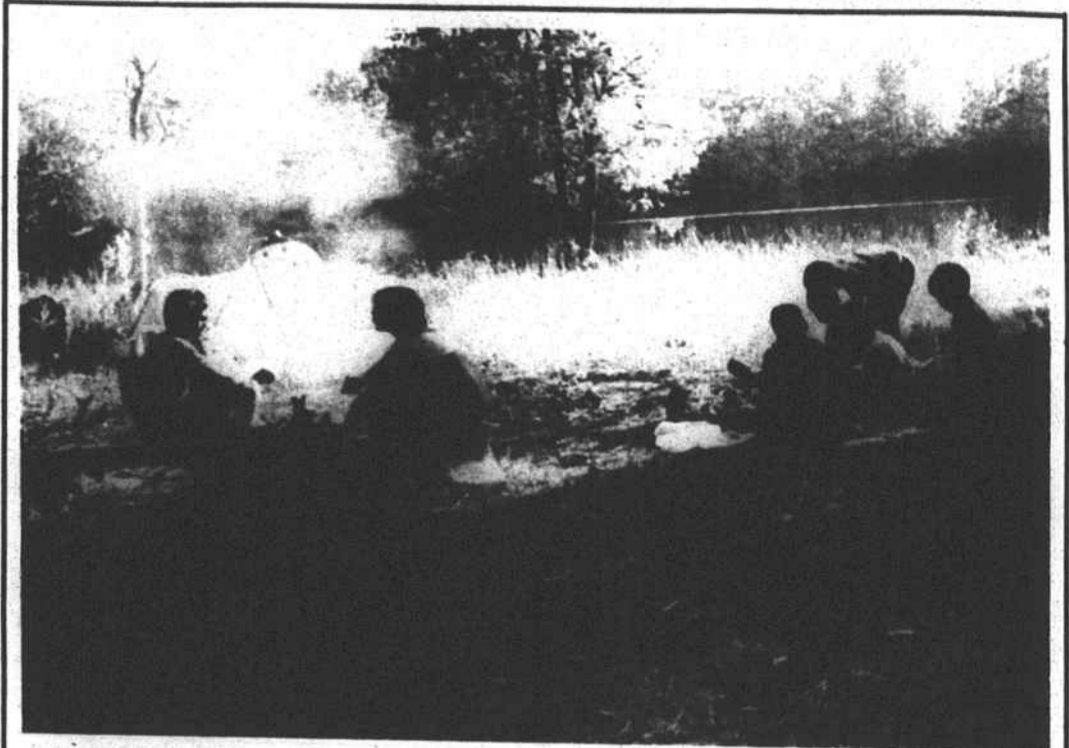
The ideal planting site would be one with well-drained soil, full sunny exposure and good air drainage. Crape myrtles do not flower well in partial shade and not at all in heavy shade. Powdery mildew is a serious disease problem, but this can be minimized by locating in an open area where air movement will not be restricted.

Crape myrtles grow well at a pH range of 5.0-6.5. Nutrient re-

quirements are generally minimum. Two light applications of a complete fertilizer in spring and summer are adequate. With heavy fertilizer applications the plants flower less, produce lush vegetative growth, and are subject to winter injury.

Crape myrtles have a shallow fibrous root system and should be planted in a slightly raised manner. Nursery grown container crape myrtles should have organic matter mixed with the backfill. The best planting times are spring, summer and early fall. Some problems have been experienced when planting late in the year in piedmont and mountain areas of the state. The root system does not become established before freezing temperatures. In these areas it is best to plant before fall.

Transplanting small plants can be done anytime. Early spring or summer when the plant is actively growing is acceptable. Be certain to water during the establishment period. Large specimen tree forms are best transplanted balled-and-burlapped in their dormant period.



Afternoon break
Members of Boy Scout Troop 401 take a brief break in activities during a campout Saturday afternoon. The troop camped on the property of Clyde Upchurch and enjoyed fishing in the pond, swimming, hiking and cooking without utensils.

SALES
RENTALS
PROPERTY
MANAGEMENT
CONSTRUCTION
APPRAISALS

W.E. CARTER REALTY

211 South Main St.

P.O. Box 783
Raeford, N.C.
Ralph Barnhart
Edith Best

Office 875-3724
Home 875-3015
Home 875-2248
Home 875-3582

Gene Carter

PRE-WINTER SERVICE
ON YOUR HEATING SYSTEM

•Cleaning •Servicing •Check Out

DON'T WAIT UNTIL COLD WEATHER

24 HOUR ANSWERING SERVICE

McNeill Appliance & Plumbing
HEATING and AIR CONDITIONING
875-4733

FREE Portrait Stocking
when you make a 95¢ deposit on your 20 portrait package.

2-8x10s, 3-5x7s
15 wallets

ONLY **\$12.95**

Now you can give your child the ultimate personalized Christmas Stocking while you get 20 beautiful remembrances of the season.

95¢ deposit. \$1 sitting fee for each additional subject in same portrait. Poses our selection. One stocking per subject. Not valid with any other offer. Satisfaction always or your money refunded.

THREE DAYS ONLY
October: Fri Sat Sun
18 20 21

DAILY: 10 A.M.-8 P.M. SUNDAY: 1 P.M.-5 P.M.

Skycity

U.S. HIGHWAY 401 BY-PASS, RAEFORD

RE-ELECT

Ruth S. McNair

To the
Board of Education
November 6, 1984

Serving the Citizens of Hoke County

Paid for by Supporters of Ruth S. McNair

YOUR HOME HAS BORROWING POWER.

ASK US ABOUT IT!

2nd MORTGAGE REAL ESTATE LOANS UP TO \$25,000

The equity value in your home or other real estate you have could allow you to make a 2nd Mortgage Real Estate Loan for your larger money needs, home improvements/repairs or bill consolidation. Call on us today.

Safeway FINANCE
Safeway Mortgage Co. — real estate loans.
"Where people and money get together"

236 EDENBOROUGH CENTER
RAEFORD, N.C.
875-4111

Discover Home Satellite TV...

Free Demonstration!

Tomorrow's Technology Available Today!

Come and see for yourself the amazing clarity of TV pictures sent from space.

Experience the incredible variety of television now available via satellite. More movies, more news, more sports, specials, religious and cultural TV, financial and educational TV, plus unique special interest television that's available nowhere else! (Some programs require viewer fees.)

Learn how you can "scan the skies" from the comfort of your own living room!

See Channel Master Satellite Reception Equipment in action—space age performance at a down-to-earth price!

FINANCING AVAILABLE

48 month financing available to qualified buyers. As low as \$40 per month after down payment including installation.

Channel Master
SATELLITE RECEPTION EQUIPMENT

See It At:
Sat Vision Satellite Sales

Hwy. 401 North - Raeford, N.C.
875-5888