

Hot lesson
The first fire training class in Hoke County is being taught at North Raeford Fire Department. Here a student demonstrates the use of a fire extinguisher at a recent class. The class is being taught by objectives, in which student firemen are checked on performance by the instructor. The class is sponsored by Sandhills Community College, the instructor is Charles Davis, a certified Fire Instructor and Assistant chief at PineBluff Fire Department in Moore County. Any fire department in Hoke County can receive fire training by contacting Johnny Baker, area coordinator with Fire Training Services.

Unemployment increases but jobless stay same

Although the total number of unemployed persons in Hoke County did not change during September, the rate of unemployment rose slightly.

According to a state Employment Security Commission report, unemployment rose from 9.5% to 9.6%.

Some of that change is due to a drop in the total work force in the county, according to the report.

In August, there were 8,590 people in the work force in Hoke County.

That number dropped to 8,560 for September.

The 30 person drop in the total work force also reflected in the number of people working in the county.

The number of employed people dropped also by 30 from 7,770 to 7,740, according to the report.

"What we can contribute is (the rise in unemployment) to is that the textile industry is having trouble keeping people working," Linda Gentry of the Hoke County Employment Security Commission said.

There have not been any lasting layoffs in the textile industry, but there have been some short ones, Gentry said.

Also, the number of seasonal layoffs in the construction industry has had an effect on the rate, according to Gentry.

In surrounding counties, the rate of unemployment also went up with the greatest rise being in Robeson County.

In August the rate was 9.8% in Robeson. In September, that rate climbed to 10.6%, according to reports.

The state unemployment rate climbed also during last month from 6.1% to 6.3%.

Unemployment rates for college-trained workers are one-third to one-fourth that of those not college-trained.

WILLIAM C. GOODWIN, JR.
DDS, P.A.

is pleased to announce
the relocation of his
office for the practice of

ORTHODONTICS
to
503 WESTWOOD WAY
LAURINBURG, N.C.
PHONE 276-4140

Howell's Mutual Drugs

Pharmacists Tom & Bill Howell and Ruth Pecora
123 N. Main St., Raeford, N.C., Tel. 875-3365

Over-zealous joggers don't last

There is little question that jogging and running have improved the health of many. I caution you, however start on the right foot with brisk walks to condition your system for more intensive jogging. Never over do it, or you won't last.

Make warm-up exercises a habit before each workout. And get advice from your family doctor before challenging yourself and the roadways.

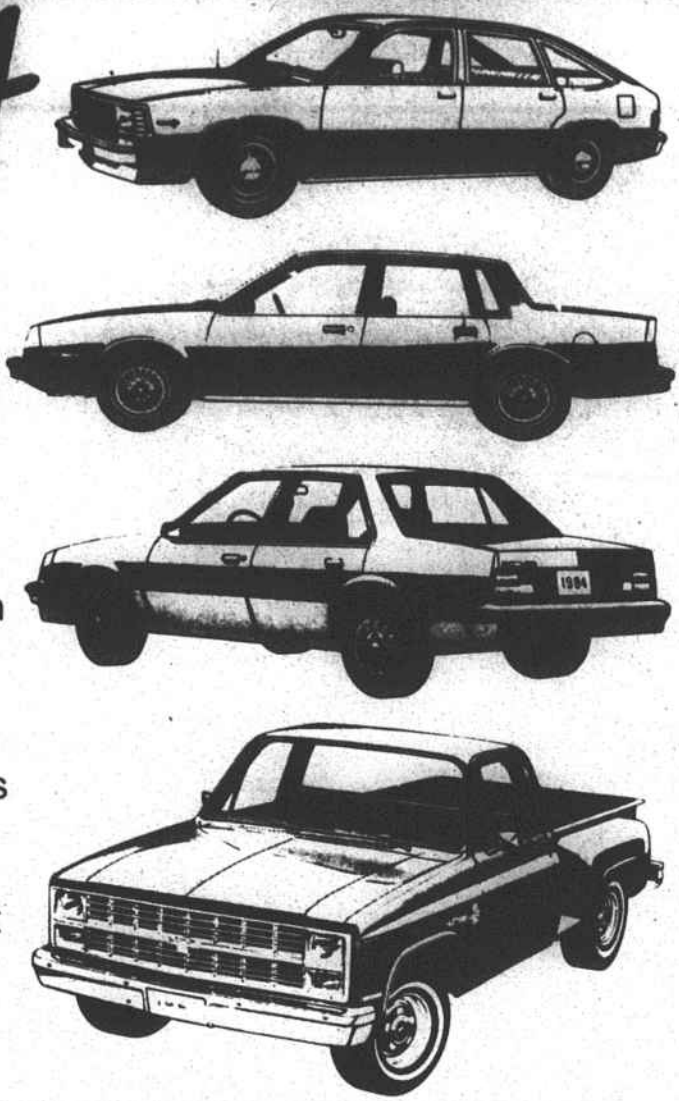
Pharmacists see many needless injuries from over-zealous "athletes." We want you to stay healthy. It's good for you and for us — in the long run!

**COMPARE OUR PRICES ANYWHERE!
NO PURCHASE NECESSARY FOR A SMILE!**

HOWELL MUTUAL DRUG
PHONE 875-3365 - RAEFORD, N.C.

QUALITY + SAVINGS + SERVICE

Pouring it on SALE



That's right, this week we're really pouring it on with hundreds of dollars in discounts on all the new Chevys. C-10's, Cavaliers, Citations, Celebrities. They're all discounted plus many have special option packages at no extra cost. But hurry, the Pouring It On Sale ends November 24th.

<p>'85 Citation 2 Tinted Glass, Floor Mats, Body Side Molding, Air Cond., Remote Control Outside Rearview Mirror, Power Brakes, V-6 Engine, Auto. Trans., Power Steering, Radial Whitewalls, AM/FM Stereo, Custom Cloth Interior, Undercoating, Interior and Exterior Protection Package. Stk. #8513.</p> <p>\$8972⁰⁰</p>	<p>'85 Cavalier 4-Dr. Sedan, Floor Mats, Wheel Opening, Racer Panel Molding, Rear Window Defogger, Air Cond., 5-Speed Man. Trans., Power Steering, Wheel Trim Rings, AM/FM Radio, Bucket Seats, Pin Stripes, Undercoating, Interior And Exterior Protection Package. Stk. #3821.</p> <p>\$7993⁰⁰</p>
<p>'85 Celebrity 4-Door, Tinted Glass, Air Cond., Remote Control, Outside Rear View Mirror, V-6 Engine, Auto. Trans., Radial Whitewall Tires, AM/FM Radio, Pin Stripes, Undercoating, Interior And Exterior Protection Package. Stk. #8554.</p> <p>\$9466⁰⁰</p>	<p>'85 C-10 Fleetside Pickup Tinted Glass, Sliding Rear Windows, Air Cond., Low Eyeline Mirror, Front Stabilizer Bar, Heavy Duty Rear Springs, Power Brakes and Steering, Rally Wheels, AM/FM Stereo, Rear Step Bumper, Radial Whitewalls, 2-Tone Paint, Gauges, Scottsdale Equipment, Pin Stripes, Undercoating, Interior and Exterior Protection Package. Stk. #3390.</p> <p>\$9752⁰⁰</p>

Used Car Special

84 NISSAN KING CAB P/U, 5-Spd., A/C \$8695 ⁰⁰	80 OLDS. CUTLASS 4 Dr., A/T, A/C, AM/FM \$5495 ⁰⁰
84 PEUGEOT 505 GL A/C, A/T, AM/FM Cass. \$11,495 ⁰⁰	80 VOLVO GLE 4 Dr., Loaded \$9495 ⁰⁰
84 CHEV. CAMARO 5-Spd., V6, AM/FM \$8495 ⁰⁰	80 BUICK CENTURY LIMITED V6, A/T, A/C \$3995 ⁰⁰
84 PEUGEOT 604 Loaded \$14,995 ⁰⁰	80 PONTIAC GRAN LEMANS V6, A/C, AM/FM \$4995 ⁰⁰
84 FIAT PINA FARINA CONV. A/C, AM/FM \$12,495 ⁰⁰	80 DODGE OMNI 4 Dr., Automatic \$1995 ⁰⁰
84 RENAULT ENCORE S A/T, A/C, AM/FM \$7995 ⁰⁰	80 CHAMPION MOTOR HOME 23 Ft. \$7995 ⁰⁰
84 MERCEDES BENZ 300CD 2 Dr., Loaded \$29,995 ⁰⁰	80 CHEV. EL CAMINO A/T, A/C, Camper Top \$5995 ⁰⁰
84 CHEVETTE CS 2 Dr. Sport Cpe., 4 Spd., A/C \$5995 ⁰⁰	80 PLYMOUTH VOLARE S/W, A/T, AM/FM, A/C \$3495 ⁰⁰
84 BMW 745i Turbo, V8, Loaded \$ave Thousands!! \$8995 ⁰⁰	80 VOLKS. DASHER 4 Spd., Diesel, A/C \$1895 ⁰⁰
84 CHEV. CAMARO 5 Spd., A/C, Stereo \$8995 ⁰⁰	80 CHRYSLER LEBARON 2 Dr., A/T, A/C \$4995 ⁰⁰
84 DODGE TURBO DAYTONA Loaded \$13,495 ⁰⁰	79 HONDA CIVIC 4 Spd., AM/FM \$2995 ⁰⁰
84 CHEV. C10 P/U A/C, A/T, Sharp \$10,495 ⁰⁰	79 PEUGEOT 504 AM/FM Cass., A/C \$2995 ⁰⁰
84 PONT. SUNBIRD A/T, A/C, Low Miles \$8295 ⁰⁰	79 HONDA ACCORD H/B, AM/FM 5 Spd., A/C \$3995 ⁰⁰
83 CHEV. CAPRICE CLASSIC S/W Loaded \$10,495 ⁰⁰	79 HONDA ACCORD 4 Dr., A/T, AM/FM, A/C \$4995 ⁰⁰
83 PONTIAC 6000 A/T, AM/FM Stereo \$7995 ⁰⁰	79 HONDA ACCORD 2 Dr., 5 Spd., A/C, AM/FM \$3995 ⁰⁰
83 PEUGEOT 505 STI A/T, AM/FM Cass. \$13,995 ⁰⁰	79 VOLKS. RABBIT 4 Dr., A/C, 5 Spd., AM/FM \$3995 ⁰⁰
83 BUICK REGAL 2 Dr., A/T, A/C, V6 \$7995 ⁰⁰	79 BUICK CENTURY S/W, A/T, AM/FM, A/C \$3995 ⁰⁰
83 CHEV. EL CAMINO A/T, A/C, P/W \$8995 ⁰⁰	78 PONTIAC BONNEVILLE A/C, AM/FM, TH \$3495 ⁰⁰
83 AMC EAGLE 4 x 4 S/W, A/C, A/T, AM/FM St. \$8495 ⁰⁰	77 PONTIAC CATALINA 4 Dr., A/C, Cruise, A/T \$2295 ⁰⁰
83 BMW 633CSi, 2 Dr., A/T, Loaded \$29,995 ⁰⁰	77 BUICK REGAL 2 Dr., A/T, A/C \$2495 ⁰⁰
83 CHEV. MONTE CARLO Loaded \$7995 ⁰⁰	77 OLDS. 98 REGENCY 4 Dr., Loaded \$2495 ⁰⁰
83 OLDS CUTLASS CIERRA 4 Dr., A/T, A/C \$7995 ⁰⁰	78 FORD ELITE A/C, AM/FM \$1995 ⁰⁰
83 CHEV. S10 P/U 4 Spd. \$6495 ⁰⁰	76 TRIUMPH SPITFIRE 4 Spd. \$1495 ⁰⁰
83 BUICK ELECTRA 225 A/T, Loaded \$11,495 ⁰⁰	75 MG MIDGET \$2995 ⁰⁰
82 PEUGEOT 604 Loaded \$11,995 ⁰⁰	75 OLDS. CUTLASS A/T, A/C, AM/FM St. \$995 ⁰⁰
82 CHEV. S-10 P/U 4 Spd., Camper Shell, V6 \$5995 ⁰⁰	73 CADILLAC SEDAN DEVILLE A/T, Cruise \$1595 ⁰⁰
82 HONDA ACCORD LX 3 Dr., A/C, AM/FM St. \$7995 ⁰⁰	72 OLDS. S/W VISTA CRUISER Loaded \$1095 ⁰⁰
82 HONDA ACCORD 3 Dr., 5 Spd. \$6295 ⁰⁰	69 CHEV. IMPALA 2 Dr. \$695 ⁰⁰
82 PONTIAC J2000 3 Dr., 4 Spd., A/C, AM/FM \$5695 ⁰⁰	
82 DATSUN MAXIMA Diesel, 5 Spd., Loaded \$7195 ⁰⁰	
82 HONDA ACCORD LX 3 Dr., 5 Spd., A/C \$7295 ⁰⁰	
82 VOLKSWAGON JETTA 5 Spd., Diesel, A/C \$6395 ⁰⁰	
81 HONDA ACCORD AM/FM St. 5 Spd., A/C \$5995 ⁰⁰	
81 CHEV. CONVERSION VAN Loaded \$10,995 ⁰⁰	
81 TOYOTA COROLLA 5 Spd., AM/FM Cass. \$5695 ⁰⁰	
81 CADILLAC ELDORADO Loaded \$8995 ⁰⁰	
81 CADILLAC ELDORADO Loaded \$10,995 ⁰⁰	
81 GMC CONVERSION VAN Loaded \$10,995 ⁰⁰	
81 BUICK LESABRE LIMITED 4 Dr., Loaded \$6995 ⁰⁰	
81 CHEV. C-10 P/U 3 Spd., 5 Cyl., AM/FM \$5995 ⁰⁰	
81 CHEV. CAPRICE S/W, A/C \$4495 ⁰⁰	
81 PEUGEOT 505 A/T, A/C \$7995 ⁰⁰	
80 CHEV. CHEVETTE 2 Dr., 4 Spd., AM/FM \$2995 ⁰⁰	
80 PEUGEOT 505 A/T \$6995 ⁰⁰	

McBRAYER

NATIONAL CAR RENTAL

HWY. 15-201 & 1-N. ABERDEEN, N.C. 28611
Mon.-Fri. 8:30 a.m.-7:00 p.m. - Sat. 8:30 a.m.-4:00 p.m.
TOLL FREE: 1-800-672-2193