

Burlington managers receive promotions

Burlington Menswear Fabrics has announced four promotions on its manufacturing division staff.

Bernard A. Leventhal, division president in New York, announced that George C. Waldrep, former vice president and manufacturing manager for the Menswear Division, has been promoted to executive vice president of manufacturing.

Cecil Alex Neely, former director of planning for the Menswear Division, is promoted to vice president of planning.

Junior V. Waldo, former group manufacturing manager of dyeing/finishing, has been promoted to division vice president for dyeing and finishing.

Buster B. Willis, former group greige manufacturing manager, is promoted to division vice president of greige manufacturing.

All four men have offices in the Division's manufacturing headquarters in Clarksville, Virginia.

Waldrep joined the company in 1962 as a manufacturing trainee at Raeford. He held a number of supervisory positions there and at plants in Halifax and Clarksville, before being named division vice president and group manager for dyeing and finishing in 1977. He was promoted to division vice president and manufacturing manager in 1979. He is a native of Greenville, South Carolina and a graduate of Clemson University. He is married to the former Lynda Boldt of Birmingham, Alabama and they have two children.

Neely is a native of Pearisburg, Virginia and joined the company in 1976. He served first at the

Madison plant as plant industrial engineer and became plant manager of the Robeson plant in 1981. He was promoted to division director of planning in 1983. He is a graduate of VPI and UNC-G. Mrs. Neely is the former Sue McPhatter of Lumberton.

Waldo is a native of Huntington, West Virginia, and received his bachelor's degree from Marshall university in Huntington.

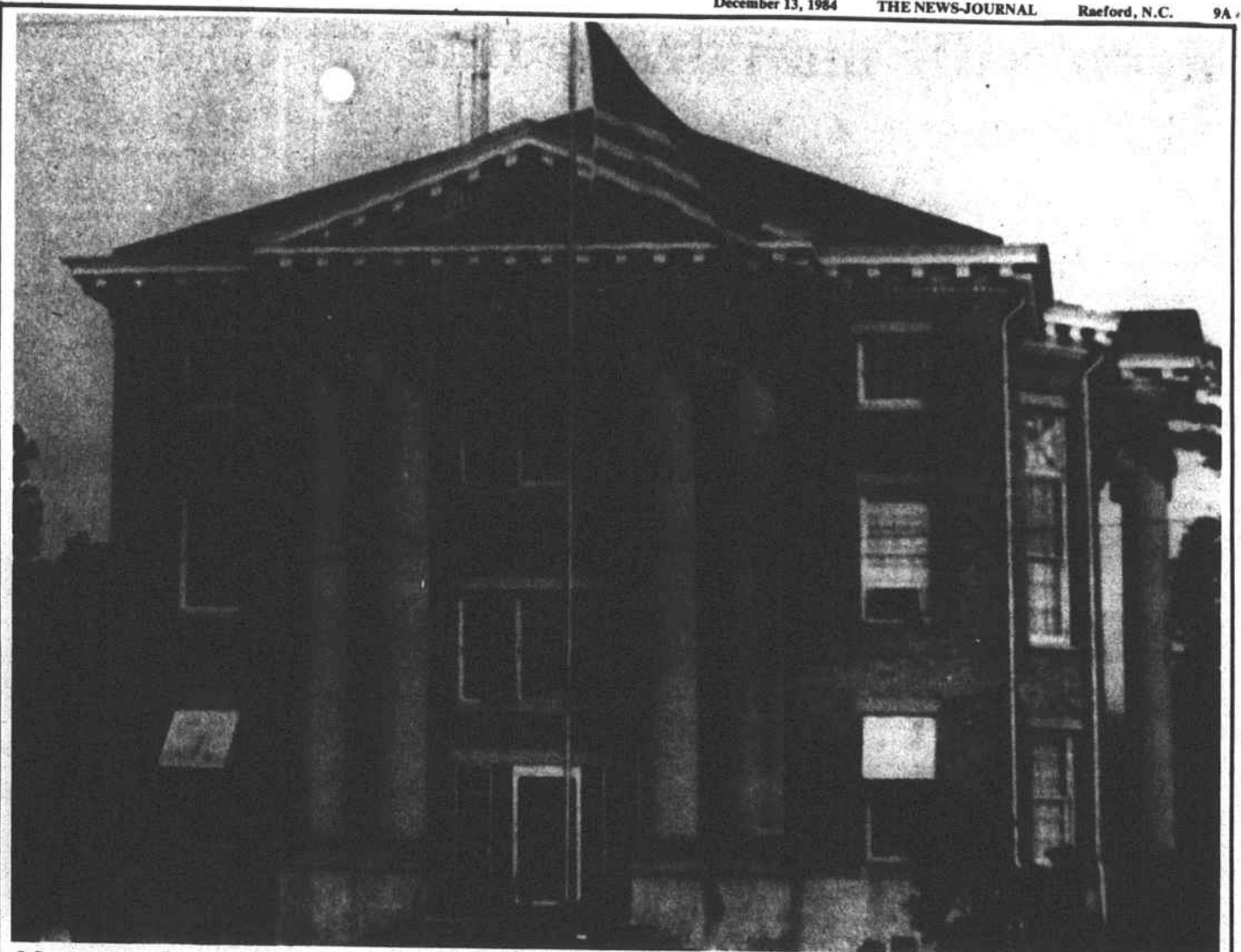
Willis is a native of Cliffside, and is a graduate of N.C. State University. He joined Burlington in 1970 as a manufacturing trainee; he was promoted to plant supervisor in 1970, knitting department manager in 1973, superintendent of knitting in 1973, and plant manager of the Modena Plant in Gastonia in 1974.

The Burlington Menswear Division operates plants in Clarksville and Halifax,; Raeford, Oxford, and Forest City,; and Bishopville, South Carolina. It is the nation's largest manufacturer of worsted and worsted blend fabrics for the apparel and uniform market.

Allen on Papaw

Coast Guard Petty Officer 3rd Class David R. Allen, son of Eddie H. and Margaret C. Allen of Palmer Avenue, Raeford, has reported for duty aboard the Coast Guard Bouy Tender Papaw, homeported in Charleston.

A 1978 graduate of Hoke County High School, and a 1982 graduate of Pembroke State University, Pembroke, with a Bachelor of Arts degree, he joined the Coast Guard in October, 1982.



Moon over the courthouse

The December full moon recently shone brightly over the Hoke County Courthouse adding a new dimension to the 73-year-old structure.

The deteriorating courthouse is expected to undergo restoration during the next year.



FMA
FOOD MERCHANDISERS
OF AMERICA INC.

JACKSON'S
FMA

ROCKFISH RD. RAEFORD, N.C.

WE ACCEPT U.S.D.A. FOOD STAMPS WE RESERVE ALL QUANTITY RIGHTS.

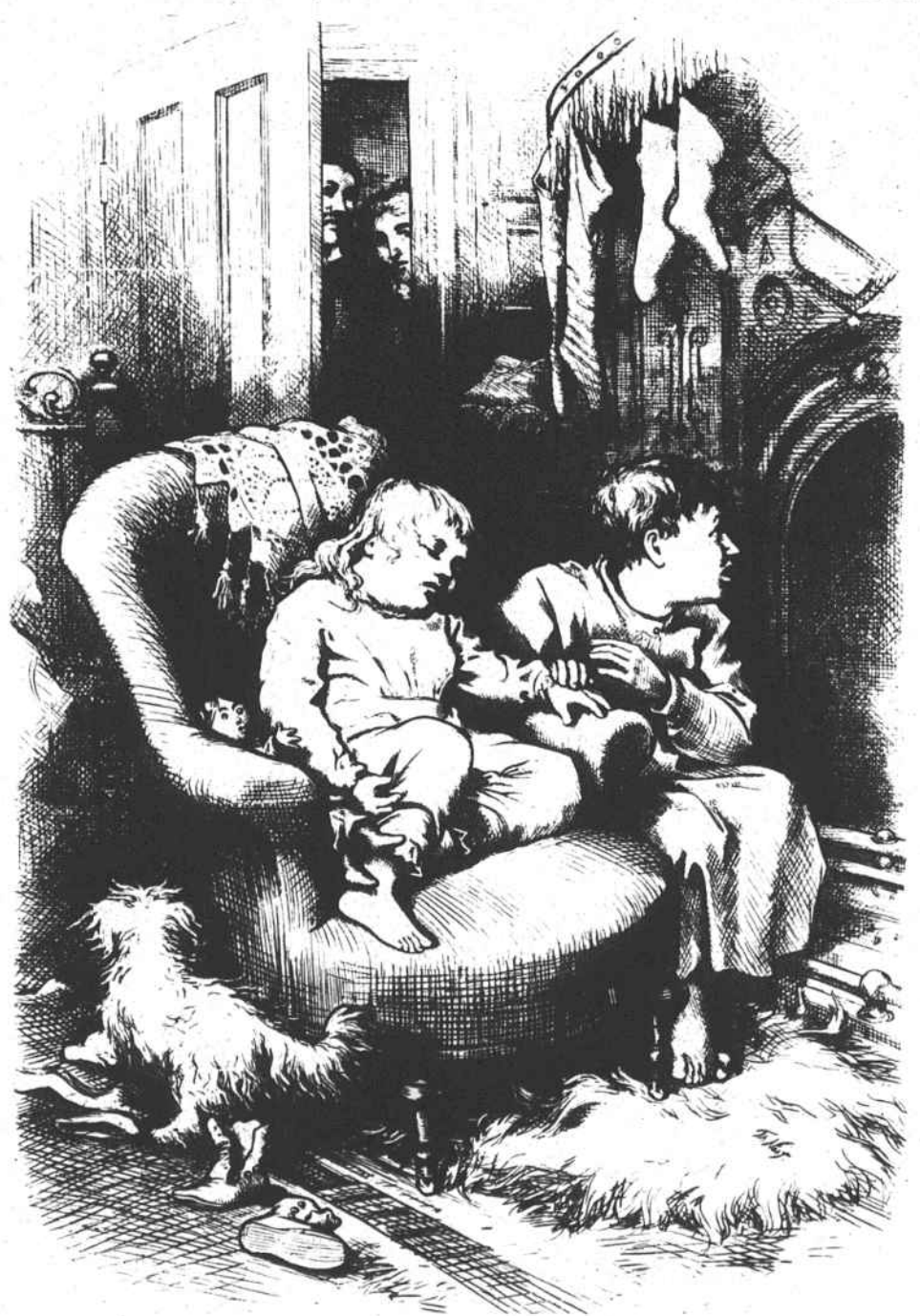
STOCK UP SALE

 <p>FRYER LEG QUARTERS 39¢ lb.</p>	 <p>WHOLE RIB EYES 3.99 v. lb.?</p>	 <p>RIB EYE STEAKS 4.59 v. lb.?</p>	 <p>FRESH LEAN GROUND BEEF 98¢ lb.</p>
--	--	--	---

<p>SOUTHERN BISCUIT SELF-RISING FLOUR 89¢ 5 lb. bag</p>	<p>LIBBY'S CREAM STYLE CORN 2/89¢ 15 oz. can</p>	<p>LIBBY'S CUT GREEN BEANS 2/89¢ 15 oz. can</p>
<p>LIBBY'S WHOLE KERNEL CORN 89¢ 15 oz. can</p>	<p>FMA BREAD 2/99¢ 1 1/2 lb. loaves</p>	<p>DAIRY COBLE MILK 1.99 gal.</p>

<p>FAMILY PACKS 5 lbs. or more</p> <p>Sirloin Cut Pork Chops lb. 99¢</p> <p>Spare Ribs lb. 69¢</p> <p>Pigs Feet lb. 39¢</p> <p>Neck Bones lb. 39¢</p> <p>Smoked Sausage 10 lb. bar 14.90</p> <p>Liver Pudding 10 lb. bar 8.90</p>	<p>PRODUCE</p> <p>FRESH TOMATOES 49¢ lb.</p> <p>RED DELICIOUS APPLES 99¢ 3 lb. bag</p> <p>FROZEN FOODS</p> <p>MORTON'S POT PIES 3/1.09</p> <p>FARMERS' SELECT FRENCH FRIES 1.79 5 lb. bag</p>	
--	---	--

Monday - Saturday 7:00 a.m. - 8:30 p.m. Sunday 8:00 a.m. - 7:00 p.m. PRICES EFFECTIVE THRU DEC. 15



Watch for our special Christmas Issue December 20 The News-Journal