

Ray graduates

Navy Airman Recruit David S. Ray, son of Myrl and Dan Ray Sr. of Route 2, Raeford, was graduated from Basic Aviation Ordnanceman School at the Naval Air Technical Training Center, Millington, Tennessee.

During the 9.1-week course, Ray was provided with the basic knowledge of aviation ordnance publications, records and reports, and procedures on the handling, storage, assembly, and disassembly of air launched munitions.

He received instruction on the operational test of suspension and releasing equipment and procedures for the loading and unloading of air launched munitions.

Additionally, Ray studied electrical and electronic troubleshooting precautions required for the handling of aviation ordnance.

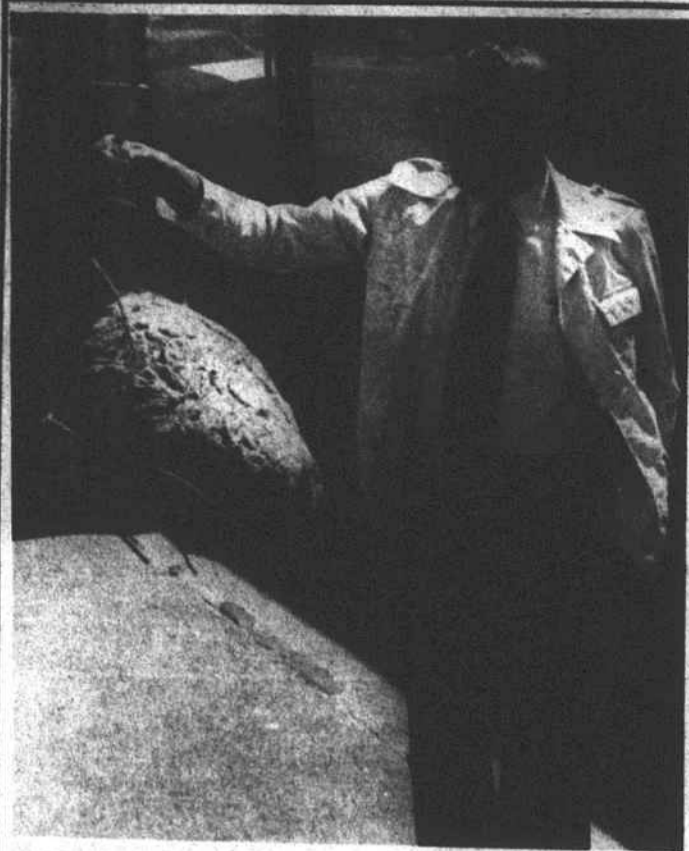
Capps is named to UNC-G honor

Laurie J. Capps of Raeford was among 17 students recently initiated into Golden Chain, an honorary society at the University of North Carolina at Greensboro.

Miss Capps, a senior accounting major, is the daughter of Agnes Dees of Route 2, Box 121, Raeford.

She is a graduate of Hoke County High School.

At UNC-G, Miss Capps is a member of Beta Alpha Psi, the national accounting society.



Economy sized

Jessie McDuffie found this hornet's nest on the Rockfish Creek. "It's the biggest one I've ever seen," said McDuffie, who has been collecting them for some time. Perhaps it is a good thing that the weather was cold when he found it. Hornets are believed to have one of the most poisonous stings of any stinging insect.

Peke-a-Poo sheds like crazy

DEAR DOCTOR: We have never had a dog in the house until this year. Now we have gotten a white, long-haired Peke-a-Poo. She sheds so much, is there anything I can do? We had her spayed and her shots were given. She seems to be in good health otherwise.

ANSWER: I'm glad you mentioned that she is in good general health, so often the dry, shedding hair coat is due to poor health. For instance, when a dog has heartworms, often the first outward sign of the disease is a dry haircoat.

Many dogs that are inside home all winter have shedding problems because of the dry air in the home. This problem can be helped by increasing the fatty acids in the diet. Specific recommendations for your dog can be obtained from your veterinarian as to the type and amount of fatty acid supplement. Be sure to include a vitamin-mineral tablet at the same time.

DEAR DOCTOR: What kind of toys are safe for dogs? My dog likes to eat the squeaker out of the rubber toys and I'm afraid he will inhale the squeaker and be hurt. Are the rawhide toys good for him? He eats the whole thing so

You And Your Pet

quickly.
ANSWER: If your dog likes to destroy the toys that you are giving him, you must either give him a digestible toy or one he can't tear apart so easily. The rawhide toys are alright. They will be digested and passed without harm to the dog.

Don't give your dog a tennis ball, golf ball, or a racquet ball. They can be partially destroyed and swallowed. The golf balls and racquet balls can become lodged in the esophagus and be extremely difficult to remove.

Some dogs will tear up anything but the nylon bone-shaped chew sticks. Try the rawhide or nylon bones until you find what your dog likes best. Any dog that is having that much fun destroying the toys should be kept busy on the toys so that he doesn't start on the items around the house.

DEAR DOCTOR: What is the best way to take my cat to the veterinary office? She hates the car ride and when I get to the office she wants to escape if there are any dogs in the waiting room.

ANSWER: Some cats love to ride in the car and are only a pro-

blem when they arrive at the office of their gentle veterinarian. Others are excited from the time you get your car keys. I think the best solution is to get a carrier to transport the cat from your home to the examining table.

Every veterinarian can relate stories about cats that leap from their owner's arms at the front door of the office, never to be seen again. Others become nervous enough to try to hide under the car seats. When you try to extract them, they either become all fangs and claws to root themselves to the carpet.

Carriers are available from some veterinarians and from all pet shops that will make the necessary trips to the veterinarian's office relatively trauma free for both of you. The carriers come in cardboard, plastic and wire versions. I believe you will find one that suits your needs and will think it was a good investment.

Editor's Note: This column is provided as a public service by the North Carolina Veterinary Medical Association. If you have a question about your pet's health, send it to Ralph H. Lee, Executive Director, NCVMA, P.O. Box, Kinston, N.C. 28501.

NOTICE Hoke County Taxpayers

UNPAID 1984 COUNTY TAXES Will Be Advertised May 9, 1985

Deadline to keep tax from being advertised

FRIDAY, MAY 3, 1985

Tax Liens will be advertised for 2 weeks

Elizabeth D. Livingston
HOKE COUNTY TAX COLLECTOR

Spring Savings

VALU-MART

114 N. MAIN STREET RAEFORD, N.C.

"WE RESERVE THE RIGHT TO LIMIT QUANTITIES"
"PRICES GOOD THROUGH NOON APRIL 24"
"OR UNTIL MERCHANDISE IS SOLD OUT."
"Featuring Low, Low, Every Day Prices"

STORE HOURS:
9 a.m. til 5:30 p.m.
Mon. - Sat.

 <p>LISTERINE MOUTHWASH 18 oz. VM reg. 2.63 BONUS BUY 1.79</p>	 <p>WHITE RAIN HAIR SPRAY 7.5 oz. 50% OFF VM reg. 1.26 BONUS BUY 88¢</p>		
<p>PRIMATINE MIST Refill 1/2 oz. VM reg. 7.13 BONUS BUY 3.97</p>	<p>ALKA-SELTZER PLUS COLD MEDICINE 20's VM reg. 2.90 BONUS BUY 1.90</p>	<p>ALKA-SELTZER PLUS COLD MEDICINE 36's VM reg. 4.43 BONUS BUY 3.43</p>	<p>CLOSE-UP TOOTHPASTE 4.6 oz. 20% OFF LABEL VM reg. 1.38 BONUS BUY 77¢</p>
<p>PANADOL MAX STRENGTH TABLETS 30's PANADOL MAX STRENGTH CAPSULES 24's VM reg. 2.53 BONUS BUY 2/3.00</p>	<p>ANACIN TABLETS 30's VM reg. 2.13 BONUS BUY 1.39</p>	<p>ANACIN ARTHRITIS PAIN FORMULA 40's VM reg. 2.96 BONUS BUY 1.89</p>	<p>ALKA-SELTZER 36's VM reg. 2.76 BONUS BUY 1.88</p>
<p>MAALOX PLUS LIQUID 12 oz. VM reg. 3.19 BONUS BUY 1.99 LIMIT 2 PLEASE</p>	<p>MAALOX PLUS TABLETS 50's VM reg. 2.49 BONUS BUY 1.99</p>	<p>ASCRPTION TABLETS 100's VM reg. 3.43 BONUS BUY 2.59</p>	
<p>ANBESOL LIQUID 31 oz. VM reg. 2.98 BONUS BUY 1.99</p>	<p>SELUN BLUE SHAMPOO 4 oz. VM reg. 3.03 BONUS BUY 2.19</p>	<p>MURINE EYE DROPS .5 oz. VM reg. 2.13 BONUS BUY 1.37</p>	<p>DRY IDEA ROLL-ON Anti-Perspirant 1.5 oz. VM reg. 2.64 BONUS BUY 1.59</p>
<p>ANBESOL GEL .25 oz. VM reg. 2.82 BONUS BUY 1.89</p>		<p>MENNEN SKIN BRACER 6 oz. VM reg. 3.10 BONUS BUY 1.96</p>	<p>MENNEN SKIN BRACER 4 oz. VM reg. 2.47 BONUS BUY 1.47</p>
<p>ROLAIDS 3-PACK 25-count VM reg. 1.17 BONUS BUY 77¢</p>			

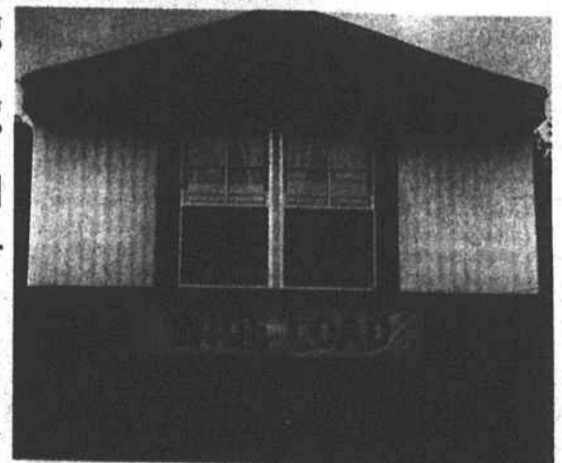
YOUR NEW ENERGY LOAD SAVER.

If you've been looking for a new, manufactured home, you may be looking at a great idea. One that could save you money, and become a great investment.

But be careful. For just as with conventional homes, energy inefficiency can turn your investment into a costly one.

CP&L's Common Sense Program makes sense for all kinds of homes, manufactured homes included. Common Sense Manufactured Homes qualify for a 5% discount from CP&L. And while homes that meet Common Sense standards may cost a bit more, you'll come out ahead with monthly energy savings for years to come.

So call CP&L before you buy. If you're shopping for a manufactured home, we can help you save a load.



CP&L