

# ... Around Town continued

(Continued from page 1A)  
McLauchlin Park Sunday afternoon and it seems that the event was very successful.

Tuesday, April 23, as I was listening to the news on television the report came that Senator Sam Ervin had passed away in Winston-Salem. It left me feeling as if one of my relatives had died. Over the many years that I was involved in the Democratic Party, I crossed paths with Senator Sam many times and each time our paths crossed it seemed that I was more impressed with this great statesman. You can't use the word statesman much anymore because most of them died before Sam Ervin. We now have politicians.

My first close contact with the Senator came after he was appointed to fill the term of Senator at the death of Senator Clyde R. Hoey. I was chairman of the county party and he contacted me about someone from Hoke County who was wanting a job in his office. He

asked me if I knew Mary Black McBryde. Now Mary Black is younger than I am, but I knew her father and mother and was also in school with her older sisters.

The senator wanted to know if they were Democrats? My answer was yes and I gave him a good recommendation for Mary Black by my knowledge of her family. He hired her and she was his personal secretary until his death.

In 1960 when John F. Kennedy was running for president against Richard M. Nixon, the campaign was real close. Having been in Hoke County during the 1920 Al Smith - Herbert Hoover campaign for president, I could remember the talk of a person being a Catholic and being president.

This same talk was being put in the 1960 campaign in the south. As party chairman, I invited Senator Ervin to speak at a political rally here in Hoke County. He accepted and was introduced by Lawrence McNeill and he spent the night at

the home of Mr. and Mrs. T.B. Upchurch, Jr.

The senator was a Presbyterian Elder and he made an old time speech to the crowd at the high school cafeteria.

Kennedy won and carried Hoke County by a large margin.

In 1983 I wrote in this column about a book Senator Sam had written and he in turn wrote me one of the nicest letters thanking me for the comments on the book and also the nice things I had said about him in the column. I know that he was shown the article by Mary Black, who takes *The News-Journal*. Anyway it makes you feel good to receive a letter like that.

Yes, over the years, I have come in contact with this great man many times. The state of North Carolina has lost a great statesman.

Someone called me the other night and wanted to know how many children the senator and his wife had over the years. The number is one son, Judge Sam J.

Ervin III of Charlotte and two daughters: Mrs. William E. Smith and Mrs. Gerald M. Hansler.

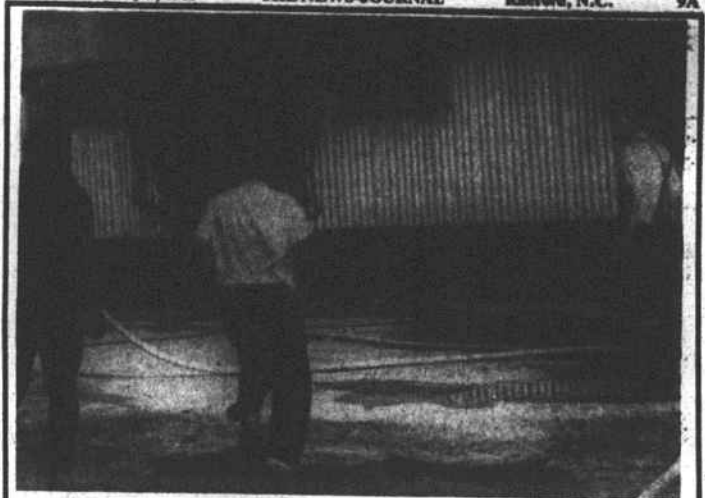
Albert Coates had this to say after the death of Sam Ervin: "Those of you who know of his devotion to the Bill of Rights 'don't know nothing' until you know of his devotion to 'Miss Margaret.' If she should ever come into conflict with the Bill of Rights in Sam Ervin's mind, God help the Bill of Rights!"

He was a family man first and a statesman second.

## Blue joins unit

Pvt. Patrick F. Blue, son of Joseph and Clarie L. Blue of Rural Route 1, Red Springs, has become part of an 82nd Airborne Division's cohesion operational readiness and training (COHORT) unit by parachuting onto Fort Bragg.

Blue, an infantryman, is a 1984 graduate of Hoke High School.



## A morning nightmare

Fireman Mike McNeill (right) and others survey the remains after a fire gutted this house trailer Monday morning and put a family out of a home. Betty McPhaul and her family had been living in the trailer just over a year when the fire destroyed it. "I'm just glad we got out," said McPhaul when the blaze was out. She, her sister and two nephews had been asleep when the fire broke out, she said. As for now, the occupants of the trailer will be staying with McPhaul's mother.

## ... School budget approved

(Continued from page 1A)

There are another three teachers, at the next step up, who are collectively being paid \$54,090.

"When you talk about big money, that's the only place you can go," said the business manager.

In the federal Revenue Sharing portion of the school budget, the Board of Education is asking for a 6.8% increase over last year, said Steed.

Originally, the administration asked for \$188,900, according to Steed.

By the time the budget session was over, the amount was down to \$137,000, representing cuts of \$51,000.

One item cut completely from that portion of the budget would have paid for itself in three years, said Steed, referring to a library detection system.

The school administration had planned to buy two of the systems at costs of \$7,000 apiece, said Steed.

The detection systems would have gone off if students at Upchurch Junior High School or Hoke High had tried to walk out of libraries without checking the books out, said Steed.

The two schools together are losing about \$4,500 per year in stolen library books, he said.

Also cut from the Revenue Sharing budget were some industrial filing cabinets, new lockers for Hoke High, termite control for some schools and blazers for the Hoke

High Chorus and Chorale, Steed said.

The administration had asked for the blazers because questions had arisen on the high school paying for band uniforms but not for required wear for the chorus, said Steed.

Another five budget items were refused, according to Steed.

Funds requested for new furniture for the schools, an activity van for the high school, vocational equipment and math kits were cut some.

One of the only increases in the Revenue Sharing budget was for athletic equipment at Upchurch Junior High School, said Steed, adding that the reason for the increase was because that school has very little equipment anyway and what it has is about worn out.

Steed said all the present equipment was handed down from the high school after it could no longer be used there.

"You can imagine what kind of shape it's in," he said.

Increases in the state and federal budgets amount to \$629,758, according to proposals.

The state budget represents an increase of \$503,757, while the federal budget has been increased \$126,001.

"I believe a lot of thought went into preparing the budget. I'm real pleased with it," said Steed.

"Eddie McNeill and Shirley Gibson, as far as new board members go, contributed a lot," he added.

**Honeycutt Jewelers**  
Larry & Diane Helms

*Anniversary Sale*

**Everything Reduced — Quality For Quality — Our Price Can't Be Beat!**

Hoke County and Moore County On A Scale Of 1 - 10 You're A #10 To Honeycutt Jewelers!

36 Years Serving Moore County & Hoke County

**Diamonds On Wide Bands**  
Reg. 195<sup>00</sup> SALE **119<sup>00</sup>**

1/4 Ct. .... Reg. 495<sup>00</sup> SALE **319<sup>00</sup>**  
1/2 Ct. .... Reg. 795<sup>00</sup> SALE **445<sup>00</sup>**  
1 Ct. .... Reg. 1250<sup>00</sup> SALE **848<sup>00</sup>**

**Heart Pendant**  
Special Price **199<sup>00</sup>**  
14 Kt. Yellow Diamond  
All Rubies **159<sup>00</sup>**

**16 Karat Ad A Beads**

|     |       |      |
|-----|-------|------|
| 3mm | ..... | .35  |
| 4mm | ..... | .65  |
| 5mm | ..... | 1.00 |
| 6mm | ..... | 1.30 |
| 7mm | ..... | 1.40 |

**All Gold Chains Reduced**

2"mm Solid Rope Bracelet **\$49.95**

24"mm Solid Rope Chain **\$160.00**

**All 14 Kt. Earrings Reduced 30% Fashion Earrings 48.00**

**Diamond Solitaires**  
From **95<sup>00</sup>** up  
1/2 Ct.  
Special **795<sup>00</sup>**

**Great Guard Rings**  
Sale **119<sup>00</sup>**  
Ruby, Sapphire or Emeralds  
20<sup>00</sup> More

1 Ct.  
Reg. 1450<sup>00</sup> SALE **875<sup>00</sup>**

**Gents Onyx & Birthstone Ring**  
Solid Back **165<sup>00</sup>**

**Pewter and Giftware 20% Off**

**Diamond Pendants**

|         |   |
|---------|---|
| .04 Pt. | ..... Reg. 99 <sup>00</sup> SALE <b>56<sup>00</sup></b>   |
| .09 Pt. | ..... Reg. 150 <sup>00</sup> SALE <b>100<sup>00</sup></b> |
| 12 Pt.  | ..... Reg. 185 <sup>00</sup> SALE <b>125<sup>00</sup></b> |
| 15 Pt.  | ..... Reg. 240 <sup>00</sup> SALE <b>160<sup>00</sup></b> |
| 20 Pt.  | ..... Reg. 315 <sup>00</sup> SALE <b>200<sup>00</sup></b> |
| 28 Pt.  | ..... Reg. 435 <sup>00</sup> SALE <b>290<sup>00</sup></b> |

**14 Karat #10 Diamond Pendant**  
Come In And Register To Win.  
No Purchase Is Necessary.

**1 Case, All Merchandise 1/2 Price**

**Diamond Earrings**

|           |   |
|-----------|---|
| 6 Pt. TW  | ..... Reg. 99 <sup>00</sup> SALE <b>56<sup>00</sup></b>   |
| 9 Pt. TW  | ..... Reg. 125 <sup>00</sup> SALE <b>85<sup>00</sup></b>  |
| 18 Pt. TW | ..... Reg. 255 <sup>00</sup> SALE <b>165<sup>00</sup></b> |
| 20 Pt. TW | ..... Reg. 275 <sup>00</sup> SALE <b>185<sup>00</sup></b> |
| 36 Pt. TW | ..... Reg. 540 <sup>00</sup> SALE <b>325<sup>00</sup></b> |

**SALE**

|         |       |                   |
|---------|-------|-------------------|
| 1/4 Ct. | ..... | 275 <sup>00</sup> |
| 1/2 Ct. | ..... | 499 <sup>00</sup> |
| 1 Ct.   | ..... | 959 <sup>00</sup> |

**Diamond Ring**  
1/2 Ct. Total Weight  
Reg. 795<sup>00</sup> SALE **597<sup>00</sup>**

**Diamond Channel Set Bands**  
Starting **225<sup>00</sup>**  
Up To 3500<sup>00</sup>

**All 14 Karat Initials 1/2 Price**

**All Cultured Pearls 25% Off**

**Citizen Watches**  
As Low As **43<sup>00</sup>**

**Seiko Watches**  
As Low As **80<sup>00</sup>**

Men's & Women's Styles Available

**Mother's Day - May 12**  
Just 2 Weeks - Buy Now & Save

**Diamond Pendant**

|         |       |                   |
|---------|-------|-------------------|
| 1/2 Ct. | ..... | 325 <sup>00</sup> |
| 1/2 Ct. | ..... | 525 <sup>00</sup> |
| 1 Ct.   | ..... | 749 <sup>00</sup> |

**Men's Diamond Rings 30% Off**

**Lady Diana Ring**  
495<sup>00</sup>  
1 Ct. Sapphire

**Diamond & Emerald**  
Reg. 1250<sup>00</sup>  
SALE **800<sup>00</sup>**  
Super Buy — One Only!!  
**Diamond Ring Square-Cut Diamonds**  
Reg. 2250<sup>00</sup> SALE **1150<sup>00</sup>**

**PITTMAN GROVE BAPTIST CHURCH**  
Rockfish

**FISH FRY**  
Saturday, May 4, 1985  
(Eat In or Carry Out)  
**\$3.00 Donation**

*Proceeds go to Church Building Fund*  
Time: 11 a.m. until 7 p.m.

**MONEY MAKES THINGS HAPPEN.**

IT'S POSSIBLE TO USE THE EQUITY IN YOUR REAL ESTATE FOR THE MONEY YOU NEED WITH A

**2nd MORTGAGE REAL ESTATE LOAN**

★ 2nd MORTGAGE LOANS UP TO \$25,000.

As a homeowner you are entitled to special consideration when you need a large amount of money... because of the borrowing power you have built up in the equity in your home. This borrowing power could allow you to make a 2nd mortgage real estate loan for the money you need to complete home improvements or repairs. Or consolidate and pay off all your bills, making just one convenient monthly payment at one place... many times for 1/3 to 1/2 what you're paying out now. Call on us today.

**Safeway FINANCE**  
Safeway Mortgage Co. — real estate loans.  
"Where people and money get together"

**236 EDENBOROUGH CENTER**  
RAEFORD, N.C.

**Honeycutt Jewelers**

110 N. W. Broad Street      Southern Pines      Phone 682-2388