

In Weeks To Come

Meetings

MUSIC BOOSTER - Hoke Co. Music Booster Association meetings will be first Monday night of every month at Hoke High School band room at 7 p.m. Parents and friends of the music association are urged to attend.

AIRPORT AUTHORITY - The Hoke/Raeford Airport Authority will hold its regular meeting at the Raeford City Hall on the second Thursday of each month at 7:45 p.m.

AMERICAN LEGION - American Legion Post 20 of Hoke County meets the second Tuesday of each month at the Edinborough Restaurant at 8 p.m. Those interested in joining are invited.

COUNTY COMMISSION - Members of the Hoke County Commission meet the first Monday of each month at 9 a.m. and the third Monday at 7:30 p.m. Pratt Building located at 227 N. Main St. in Raeford. The public is invited.

CITY COUNCIL - The Raeford City Council meets the first Monday of each month at 7 p.m. in City Hall. The public is encouraged to attend.

SCHOOL BOARD - The Hoke County Board of Education meets the second Tuesday of each month at 7:30 p.m. at the board offices on Wooley Street. The public is encouraged to attend.

AL ANON - Meetings are held every Wednesday at 8 p.m. at the Library Conference Room.

June 1
DEMOCRATIC OFFICERS - A workshop will be held for newly elected officers in the Hoke County Democratic Party. The meeting will be held at the Hoke County Library on June 1 from 11 a.m. to 2 p.m. All officers and precinct chairpersons are expected to attend.

June 4
FRIENDSHIP CLUB - The Raeford Friendship Club will meet Tuesday, June 4, at 2:30 at the Raeford United Methodist Church.

JAYCEES - Raeford Jaycees meet the 2nd and 4th Monday of each month over Howell's Drug Company on Main Street. Anyone interested is invited to attend.

Continuing Events

thru June 14
PHOTOS EXHIBITED - The Department of Humanities at Sandhills Community College

will exhibit the photographs of Pinehurst photographer Sheridan Maitland. The show is scheduled to run thru June 14 in the lobby of the Audrey K. Kennedy Building on the SCC campus.

thru June 16
RIVER ACTION - The arrival of the Captain J.N. Maffitt riverboat on Thursday, May 23 kicks off River Renaissance II, an annual historical and theatrical celebration on the banks of the Cape Fear River, which will run thru June 16.

June 24
ARTVENTURES - The children's summer art day-camp, will again be co-sponsored this summer by the Fayetteville Museum of Art and the Fayetteville Parks and Recreation Department. A series of five-day workshops will be available for children in age groups from entering first grade to entering sixth. The first session will begin June 24. Further details may be obtained by calling the Museum 485-5121.

Coming Events

June 6-7
RADIO-THON - The Leukemia Society of America, North Carolina Chapter will hold a Radio-Thon on WSMR in Raeford Thursday and Friday, June 6-7 from 7 p.m.-10 p.m. and from 6 a.m.-10 a.m. WSMR will be taking pledges over the phone, promoting the Radio-Thon. Proceeds from the event will be used to support the Leukemia Society of America's programs of research and patient-aid. The North Carolina Chapter presently has \$319,053 in research projects granted to Duke University and UNC-Chapel Hill. The North Carolina Chapter is providing financial assistance to 570 patients in the state. For more information, call the Leukemia Society at (704) 535-8585 or contact Dale Edwards at WSMR at 875-8704.

SUMMER CINEMA - The North Carolina Museum of Art will present a summer-long series of feature films each Friday evening in June, July and August. "Summer Cinema" showings will be at 7 and 9:15 p.m. in the museum auditorium. "Summer Cinema" tickets are \$17 for all 13 films; \$6 each for the June or July series; \$8 for the August series; or \$2 at the door. For information, call the museum education department at 833-1935, ext. 144.

thru June 16
COTTON PATCH GOSPEL - The Fayetteville Little Theatre proudly announces the opening of its final show for the '84-'85 season "Cotton Patch Gospel." As with last season's final production, "Cotton Patch" will be per-

formed at the Riverside Theatre, 1122 Person Street, on the banks of the Cape Fear River. This show is being done in conjunction with the FLT and the Cumberland County 400th Committee's project of "River Renaissance." In addition to the show, a catered barbecue and chicken dinner will be available at the Riverside Amphitheatre for an extra charge of \$7 or \$8. Dinner will be served between 7 and 8:15 p.m. with "Cotton Patch Gospel" beginning at 8:30 p.m. The show will run thru June 16.

May 31-June 3
SUN FUN - Fun and games are the cornerstone of every Sun Fun Festival, and this year the Grand Strand will abound with original, unusual, entertaining games for the entire family during the May 31-June 3 festival. For further festival information and a complete listing of events, contact the Myrtle Beach Area Chamber of Commerce, sponsor of the festival, at 803-626-7444 or visit any of its three Grand Strand offices.

thru Sept. 2
USS NC - North Carolina's internationally recognized Sound and Light Spectacular, "The Immortal Showboat," opens its 1985 season Friday, June 7 at the USS NORTH CAROLINA Battleship Memorial in Wilmington. The outdoor drama will continue nightly at 9 p.m. through Labor Day, September 2. Admission to the outdoor drama is \$2 for adults, \$1 for children 6 through 11 and free for those 5 and under.

July 6-7
HUSOM - The seventh annual Two-Man Better-Ball Golf Tournament sponsored by the Humane Society of Moore County (HUSOM) will be held July 6 & 7 at Mid Pines Resort. Competitors may play either Saturday, July 6 or Sunday, July 7 for a \$25 per person entry fee, which is tax deductible, and includes green fees, cart and prizes donated by area merchants and clubs. Tee times may be made by calling Mid Pines, 692-2114, extension 249. All players must have a certified handicap.

July 27
1980 REUNION - Attention all 1980 graduates of Hoke County High School. We are planning a class get together July 27. If you are interested please contact one of the following persons: Jackie Purcell, Priscilla Beatty, or Dennis Lomack for more information and complete details before June 1.

This Weekend

ART AUCTION - Montessori Children's House of Fayetteville will hold a fund raising art exhibition and auction on Friday, May 31 7 p.m. at Bordeaux Motor Inn, Owen Drive, Fayetteville. Admission is free.

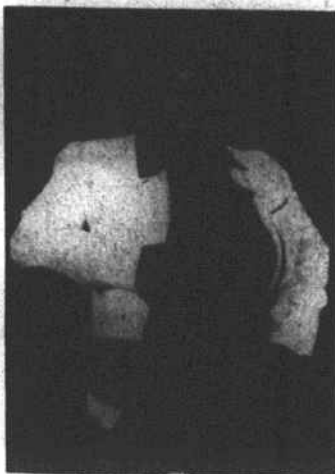
June 1
BAKE SALE - The WMU of Pittman Grove Baptist Church are sponsoring a Yard and Bake sale on Saturday, June 1 from 9 a.m. to 4 p.m. on the church grounds. Clothes, toys, and other miscellaneous items including cookies, cakes and other baked goods will be on sale. All proceeds made at their sale will go to the building fund.

June 1
SPECIAL SINGING - Living Faith Ministries will hold a special singing on Saturday, June 1 at 7 p.m. The Jay Stone Singers from Fayetteville will perform, along with Carla Earls from Pembroke and the Living Faith Singers.

June 1
YOUTH CRUSADE - Daniels Temple Church will be hosting a Youth Crusade on Saturday, June 1 at 7:30 p.m. The crusade will be sponsored by Evangelist Shirley Evans and the youth ensemble of Deliverance Tabernacle Church of Durham. There will be special singing and a message from a youth speaker. The public and young people are invited to attend. The church is located on Airport Road beside the fire station in the Tyertown community of Raeford.

June 1
ELON ALUMNI - A group of Elon College alumni will sponsor a social for alumni and friends of the college and their guests on Saturday evening, June 1 from 8 p.m. until midnight, at the Green Valley Golf & Country Club in Fayetteville. This social is the first local alumni gathering in many years. It will mark the establishment of an official Elon College alumni chapter to serve the Fayetteville area. For more information about the June 1 social, contact: Vernon Morrison - 875-2984.

June 1
GOLF TOURNEY - The Raeford Lions Club will sponsor a one-day golf tournament at Arabia Golf Club on June 1. The event will be played on the Calloway system. Entry fees are \$15 for club members and \$20 for non-members. Proceeds will help Lions Club projects for the blind.



Patricia Ann McFadyen

Engaged

Mr. and Mrs. Norman McFadyen of Raeford announce the engagement of their daughter Patricia Ann to Dennis McLeod of Raeford.

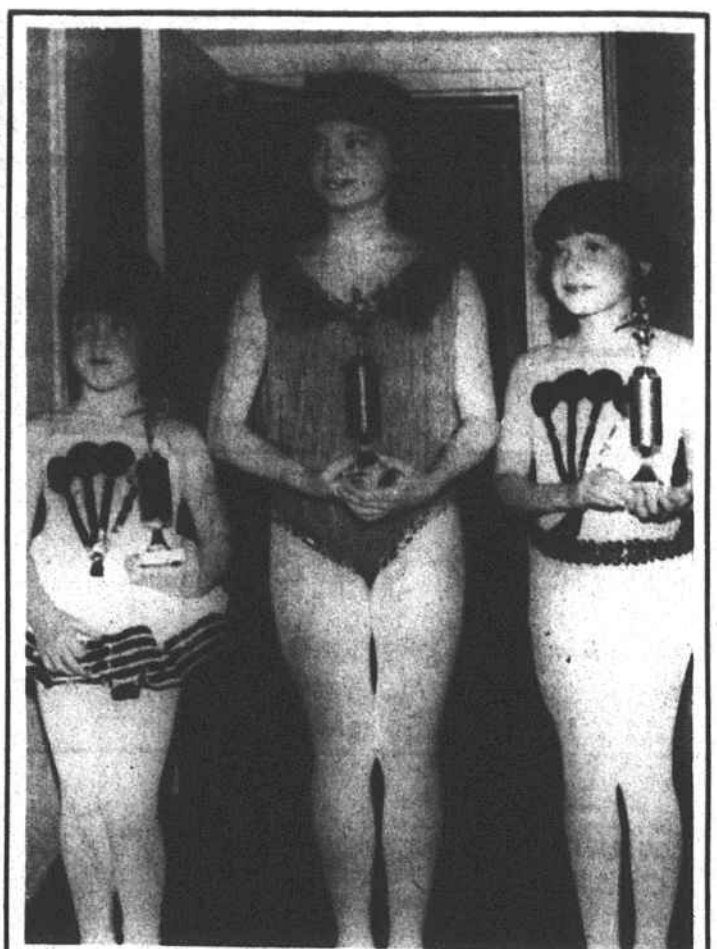
Mr. McLeod is the son of Mrs. Lendora McLeod and the late Richard McLeod.

The wedding is planned for July 6. A reception will follow at the Silver Center at 4 p.m.

Births

Mr. and Mrs. Carlton Brock announce the birth of a daughter, Elizabeth Ashley, on May 18 at Moore Memorial Hospital.

Mrs. Brock is the former Teresa Maxwell. Ashley's grandparents are Mr. and Mrs. Carl Brock and Mr. and Mrs. Jackie Maxwell. Ashley joins a sister, Linda.



Sure can cut a rug

Awards were presented to these three Hoke County girls after a recital held on May 17 by the Raeford Branch of the Ann Clark School of Dance. Tracey Williamson, daughter of Frank and Gayle Williamson, won the ballet award. Laura McNeill, daughter of John K. III and Della McNeill was rewarded for her efforts in tap dancing. For jazz dancing, Cindy Ellis, daughter of Eddie and Kathi Ellis, was awarded. Award included free tuition to the dance school. Sara White is the school's instructor and choreographer.

FMA
FOOD MERCHANDISERS
OF AMERICA INC.

JACKSON'S
FMA

ROCKFISH RD. RAEFORD, N.C.

WE ACCEPT U.S.D.A. FOOD STAMPS WE RESERVE ALL QUANTITY RIGHTS

SUPER FOOD VALUES

1/2 PORK LOIN
Sliced
139 lb.

FRYER LEG QUARTERS
43¢ lb.

FRESH LEAN GROUND BEEF
5 lbs. or more 99¢

BONELESS CHUCK STEAK
149 lb.

FAMILY PACKS
5 Pounds or More

Neck Bones lb. 39¢
Fat Back lb. 59¢
Pigs Feet lb. 39¢
Spare Ribs (LARGE) lb. 79¢
SIRLOIN CUT Pork Chops lb. 99¢

BONELESS CHUCK ROAST
139 lb.

FROZEN FOODS

Morton Pot Pies

- Beef
- Chicken
- Turkey

3/109

PET RITZ
PIE SHELLS
79¢ pkg.

GROCERY

TWIN PET
DOG FOOD
15 oz. cans
4/89¢

WALDORF
TISSUE
4 roll pkg. 89¢

GRADE A LARGE
WHITE EGGS
65¢ doz.

DAIRY PRODUCTS

COBLE MILK 1/2 gal. ctn. 98¢

MERICO BUTTER, ME NOT
BISCUITS
10 ct. 3/100

FMA BROWN & SERVE
ROLLS
2/99¢

Monday - Saturday 7:00 a.m. - 8:30 p.m. Sunday 8:00 a.m. - 7:00 p.m.

PRICES EFFECTIVE THRU JUNE 1

'85 CELEBRITY CLASSIC



(5# 128935)

\$198⁴²*

McBayer



Monday - Saturday 7:00 a.m. - 8:30 p.m.

Sunday 8:00 a.m. - 7:00 p.m.

PRICES EFFECTIVE THRU JUNE 1