

# Trees could bring future rewards for land owners

Many of us remember being told as we grew up, that "Money doesn't grow on trees!" However, times do change, so Hoke County Agricultural Extension Chairman Willie Featherstone suggests that it's a good idea to examine that advice more closely (with all due respect, of course).

Back around 1900, standing southern pine timber brought roughly \$1.85 per 1000 board feet. Eighty years later, it sells for close

to eighty times as much. That increase figures out to be more than 5 percent per year - which is more than inflation has been, Featherstone observes.

It's not easy to see trees grow, but they do increase in size as well as value. A managed stand of southern pines should accumulate an additional thousand board feet of volume each two to four years.

This growth is worth \$35 to \$75 per acre each year. Other species such as white pine

and yellow-poplar can grow as well on appropriate sites.

Not only do prices and volumes increase, but trees generally become usable for higher value products as they grow larger. While small trees might only be suitable for pulpwood, larger ones can be used for chip 'n' saw, and even larger ones for sawtimber, with high quality stems qualifying as veneer logs or poles.

One pine tree, for example, with

a fourteen-inch diameter and three sixteen-foot logs would be worth about \$3.25 as pulpwood or \$7.50 as chip 'n' saw, but \$20.00 for sawtimber, and nearly \$25 as a pole or veneer stock.

Trees are roughly seven to eight times as valuable for solid wood products as for fiber or chip products in most of North Carolina.

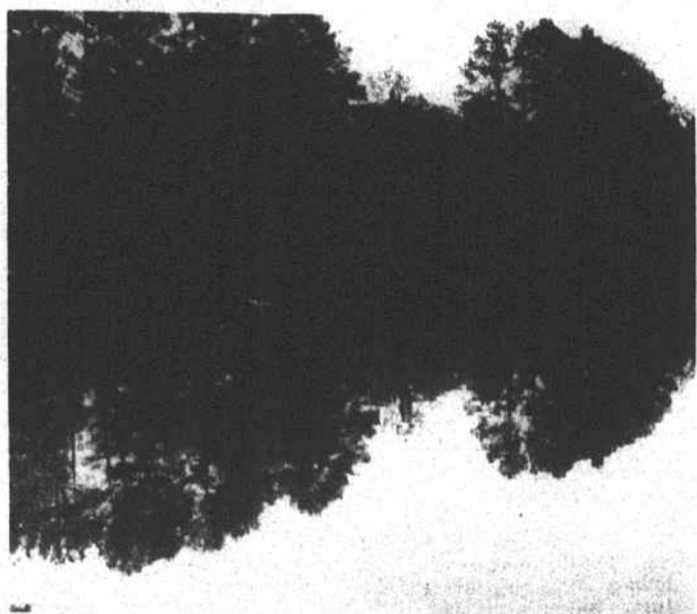
That makes it particularly important to manage for, and merchandise, the highest value product possible, Featherstone notes.

Of course trees have additional benefits as a crop for landowners. To begin with, they do not have to be harvested each year. They may be "stored" on the stump until the owner chooses to harvest. Also, the value growth each year is not taxable until harvest; and properly conducted timber sales qualify for capital gains treatment so that income tax is only paid on 40 percent of the profit.

"In short, I think that landowners managing their forests

have discovered what almost amounts to a secret," Featherstone concludes. "Money really does grow on trees!"

For more information on growing, managing and selling your timber, Featherstone suggests that landowners contact the county agent, N.C. Forest Service County Ranger Robert Jones, or other professional forester for assistance...preferably before selling timber.



**Nice summer spot**  
Fish ponds provide recreation for Hoke County residents. The local office of the USDA Soil and Water Conservation will assist pond owners with management and stocking.

## Soil and water office helps with fish pond maintenance

**By Donnie R. Harris**  
District Conservationist  
The Hoke Soil and Water Conservation District provides assistance to individuals interested in fishpond stocking and management.

Many ponds have been constructed in the county for recreation or water supply and stocked with bass, bream and channel catfish.

Well-managed ponds provide a dependable supply of fish for recreation for the landowner and friends.

Proper species and stocking rates are the most important management tools available to fishpond owners.

By using recommended species, proper stocking rates and correct fertilization procedures, the maximum poundage of harvestable fish can be produced in your pond.

The recommended rates for stocking is: 1,000 bream, 100 largemouth bass and 100 channel catfish per surface acre in fertilized pond, 500 bream, 50 large-mouth bass and 50 channel catfish per surface area in unfertilized pond.

Fertilizer affects the entire food chain in a pond by increasing desirable algae eating insects, water fleas and other small animals.

These small animals are eaten by small fish such as bream which are in turn eaten by bass.

Well fertilized ponds also prevent the growth of submersed waterweeds by preventing the penetration of sunlight to the pond bottom.

Millions of microscopic plants color the water to a depth of 18 inches or more which helps control water weed growth. Ponds should be stocked annually or as needed beginning in the spring of the year.

To determine if your pond needs to be fertilized, nail a white disk on the end of a stick.

Mark the stick at 12" and 18" above the disk. Submerge the disk in the pond water.

If it goes out of sight above 12 inches below the surface, the pond is fertile enough to feed 300 - 400 lbs. of fish per surface acre.

If you can see the disk at a depth of 18" or more, you need to fertilize your pond.

The color of the water may be any shade of green or brown.

To establish a fertilization program in your pond, apply 100 lbs. 8-8-2 per surface acre or 40 lbs. 20-20-5 per surface acre in the months of February or early March.

Most ponds require about 12 applications of fertilizer each year.

When the color of the water satisfies the disk test, your pond is fertile enough.

If you are interested in stocking or managing your pond, contact the Hoke Soil and Water Conservation District office. Call 875-8685.





The average North Carolina home cost \$44,640 to build, excluding land, according to the N.C. Labor Department.

# FAMILY DOLLAR

## 26th Anniversary

### KNOCKOUT PRICES

 <p><b>SPECIAL PURCHASE</b></p> <p><b>1.99</b></p> <p><b>BATH TOWELS</b> Special purchase assorted jacquard print bath towels. ALL 2 1/2 TOWELS... 1.99</p>	 <p><b>IMPROVED FORMULA</b> <b>VALUE PRICE</b></p> <p><b>ARM &amp; HAMMER</b></p> <p><b>HEAVY DUTY DETERGENT</b></p> <p><b>\$1</b></p> <p><b>ARM &amp; HAMMER</b> 32 ounce liquid or 65 oz. powder laundry detergent. Limit 2.</p>	 <p><b>QUAKER STATE</b></p> <p><b>SAVES FUEL</b></p> <p><b>LOW-SUCK MOTOR OIL</b></p> <p><b>FOR GASOLINE &amp; AUTOMOTIVE DIESEL ENGINES</b></p> <p><b>79¢</b></p> <p><b>QUAKER STATE</b> Regularly 1.09. Super Blend 10W30 motor oil. Limit 5 quarts.</p>	 <p><b>Limit 2 With A 7.50 Purchase</b></p> <p><b>PEPSI SPECIAL</b></p> <p><b>99¢</b></p> <p><b>PEPSI SPECIAL</b> 2 liter Mountain Dew, regular and diet Pepsi or Pepsi Free. Limit 2.</p>
--	--	--	---

 <p><b>64 Crayons</b></p> <p><b>1.99</b></p> <p><b>64 CRAYONS</b> Pack of 64 RoseArt assorted brilliant color crayons.</p>	 <p><b>3 FOR \$1</b></p> <p><b>COMPOSITION BOOK</b> 70 count composition book. Fits 2 or 3 ring notebooks.</p>	 <p><b>3 FOR \$1</b></p> <p><b>4.75 OZ. LIFEBOUY</b> Regularly 39¢ Bar. Deodorant bar soap. Limit 6.</p>	 <p><b>3 FOR \$1</b></p> <p><b>WONDERFOIL</b> Reg. 2 For \$1. 12" x 25' aluminum foil. Limit 3 rolls.</p>	 <p><b>39¢</b></p> <p><b>MARCAL TOWELS</b> Reg. 59¢. 100 count Marcal paper towels. Limit 2 rolls.</p>
--	---	---	---	---

**THIS WEEK'S 52 BIG \$100.00 CASH WINNERS!**

P. Summers, River Falls, AL	M. Wright, Selma, AL	K. Summerlin, Birmingham, AL	A. Player, Lancaster, SC
G. Geshwind, Perry, FL	N. Ivey, Jamestown, TN	M. Bed, North Augusta, SC	J. Graver, Oak Hill, WV
D. Day, Slaughter, LA	W. Lancaster, Forest City, NC	T. Silliman, Ayden, NC	C. Taylor, St. Marys, WV
L. M. Kim, Fayetteville, TN	J. Bridgeman, Ashboro, NC	K. Wallace, Clayton, NC	M. Walker, Atlanta, GA
D. Meadows, Lexington, NC	D. English, Prichard, AL	V. Cole, Greenville, AL	S. Davis, Fuquay Varina, NC
R. Prigger, Marion, SC	R. Kennedy, La Grange, NC	S. Johnson, Ruleville, MS	C. Hall, Hariman, TN
P. Paxton, Blount, VA	W. Richardson, Robinwood, AL	C. Hamilton, Natchitoches, LA	J. Styles, Summerton, SC
M. Pizres, Lancaster, SC	F. Herring, Warsaw, NC	P. Henderson, Tallulah, LA	K. Westfall, Dalton, GA
M. Conrad, Irvine, NY	S. Harris, Logan, AL	S. Bowen, Leachville, ARK	R. Mitchell, Berkeley, WV
J. Thomas, Vidalia, LA	B. Lawson, Grayson, KY	E. Dingess, Chapmanville, WV	L. Kay, Honea Path, SC
D. Jackson, Charlotte, NC	D. Bumgardner, Charlotte, NC	M. Tine, Kannapolis, NC	A. Head, Fort Walton Beach, FLA
S. Helton, Valdese, NC	N. Dixon, McDonald, PA	A. Jarrell, Dallas, NC	A. Knight, Cassett, SC
E. Livingston, Longs, SC	J. Smith, Harrisonburg, VA	R. Jones, Natchez, MS	E. Roustio, Franklin, NC

 <p><b>2.99</b></p> <p><b>2.99</b></p> <p><b>UNHEARD OF PRICE</b></p> <p><b>BOYS' KNIT SHIRTS OR PARACHUTE PANTS</b> Crew and v-neck action shirts or parachute pants in assorted colors. Sizes 8-18.</p>	 <p><b>Compare Up To 7.99</b></p> <p><b>\$3</b></p> <p><b>SPECIAL GROUP LADIES' CASUALS</b> Choose from sandals, canvas oxfords, step-ins or booties. Good selection of colors and styles.</p>	 <p><b>3.99</b></p> <p><b>3.99</b></p> <p><b>BEST BUY OF THE YEAR</b></p> <p><b>GIRLS' SCREENED TOPS OR FASHION PANTS</b> Long sleeve screen print crew tops or fashion pants with pocket treatments. 4-14.</p>
<p><b>2.99</b></p> <p><b>2.99</b></p> <p><b>2.99</b></p> <p><b>UNHEARD OF PRICE</b></p> <p><b>BOYS' KNIT SHIRTS OR PARACHUTE PANTS</b> Crew and v-neck action shirts or parachute pants in assorted colors. Sizes 8-18.</p>	 <p><b>2.50</b></p> <p><b>2.50</b></p> <p><b>MEN'S 2-PACK TEES OR BRIEFS</b> 100% cotton briefs or tees. Slight irregulars. S, M, L, XL. BOYS' SIZES... 1.99 PKG.</p>	 <p><b>40 TODDLER</b></p> <p><b>60 NEWBORN</b></p> <p><b>4.99</b></p> <p><b>4.99</b></p> <p><b>GATHERED LEG DIAPERS</b> Regularly 5.99. 48 Extra Absorbent, 40 Toddler or 60 Newborn disposable diapers.</p>

Prices Good At All Family Dollar Stores Through This Weekend. Quantities Limited On Some Items. No Sales To Dealers. Main St. Raeford, N.C. 9-9 Daily 1-6 Sun.

## It pays to learn income taxes from H&R Block.

America's Finest Income Tax Course

Learning income taxes now could offer you money-making opportunities and save you money on your return at tax time.

- Morning and evening classes
- Reasonable course fee
- Classes begin Sept. 4th

Send for more information today or call now!

Contact our nearest office.

**H&R BLOCK**

**527 Harris Ave.**  
**Raeford N.C. 28376**  
**875-5330**

Please send me free information about your tax preparation course.

Name \_\_\_\_\_

Address \_\_\_\_\_

City \_\_\_\_\_ State \_\_\_\_\_ Zip \_\_\_\_\_

Phone \_\_\_\_\_