



AIN'T WE GOT FUN!
 After watching Bobby toil long and hard over strips of balsa wood and blue prints to emerge with a small model airplane, we sort of took a notion that we would like to build one ourself. So, with our usual bent of going whole hog or nothing, we purchased ourself a dollar outfit and proceeded to dive into a 36-inch wingspread model equipped with dummy one-cylinder motor and all inconveniences.

Thus far, together with getting all stuck up with cement, cutting several fingers with a razor blade, messing up two of our wife's bedspreads, and pulling out numerous hunks of our fast thinning hair, we have the thing about half constructed. And it looks pretty good, too, even if it probably won't fly when we get the wings on—if we get the wings on.

SPEED WINS IN A RACE, BUT SLOW BURNING WINS MY VOTE IN A CIGARETTE. I SMOKE CAMELS. CAMELS ARE EXTRA MILD, EXTRA COOL—AND THEIR SLOWER BURNING GIVES ME EXTRA SMOKING



JIMMIE KELLY, Daring Speed Ace of Motor-Cycle Racing

In recent laboratory tests, CAMELS burned 25% slower than the average of the 15 other of the largest-selling brands tested—slower than any of them. That means, on the average, a smoking plus equal to



FOR EXTRA MILDNESS, EXTRA COOLNESS, EXTRA FLAVOR—
CAMELS
 Slow-Burning Costlier Tobaccos

But for good clean fun you ought to try building one sometime when you have a few weeks to spare. It's just a matter of shaping and glueing. You get a whole box full of little balsa sticks and things. The things you have to cut out with a razor blade. If they happen to split in the middle while you are cutting, that's all a part of the fun. And if your wife—if you have a wife—complains about you messing up the bedspread, that's her right. Just pay no attention, dodge the broom if you've been married long enough to acquire the art, and keep right on shaping and pasting.

Our wife doesn't mind us trying to build a model airplane at all, but she does wonder why we have to use the bed as a table. Personally, we use it because a bed provides lots of extra space in which to scatter things like pins and pieces of sticks, and excess glue and other necessary parts. And then a bed sort of lets one relax as one works. And we've found through experience that quite a bit of relaxing is necessary because building a model airplane is a job that cannot be rushed.

If this one turns out all right we are going to build one with a real miniature gasoline motor. That ought to be fun. In addition to littering up the bed with sticks and things, we could also mess it up with oil and gas spots, plus a few spots of soot and grease.

We're having lots of fun.
MORE GRASS TROUBLES
 We wrote something here the other week about our grass out home, complaining mightily because it grows faster than we can keep it cut. We'd like to report at this writing that it's still growing.

Here of late we have to get up early every morning and mow the

lawn so that the sun can shine in the windows. And just day before yesterday we had to hunt our children with a lawn mower for two hours.

Of course grass is wonderful stuff to look at and it does make a yard very attractive, but our grass is getting us down. And the lawnmower we've been borrowing from a neighbor is beginning to show considerable wear and tear. We've been sort of hinting that he buy a new one, but thus far he seems perfectly satisfied with the one he has. One of these days a wild blade of grass is going to wreck the thing and then he'll be sorry.

In case there are any Boy Scouts locally who are trying to win a merit badge for excellence in tracking or plotting a course from the stars, we'll be glad to donate the use of our yard. Of course we don't want to be held

responsible in case any scouts get lost.

THIS AND THAT
 More dinkuses can be installed on linotypes than you can shake a stick at, and when bigger and better dinkuses are made Ott Laffoon and Smith Williamson will probably be mixed up in it somewhere.

The other day a resistance coil, or something, burned out on one of the linotypes, and as a result the metal pot wouldn't heat. A replacement wasn't any nearer than New York, so Ott and Smith got busy.

Result: Two electric light bulbs lying on the floor. Every time the current automatically turns on to keep the metal at the right temperature, these two bulbs light up, which makes it very bad on our nerves, because every time they come on, we always jump. And as they flash on every few minutes, we jump every few min-

utes. You try jumping every few minutes and see how you feel.

Of course jumping like this is good exercise, and we must try and keep our weight down. Not that we're growing too fat, but so that our clothes will continue to fit. If we were suddenly to start expanding in every direction we'd be in an awful fix, and with the weather cool like it has been, a barrel would be entirely too drafty.

So there you are.

Just Opposite
 Coffee Nerves—When I drink coffee I can't sleep.
 Playfoot—With me it's just the opposite. When I sleep I can't drink coffee.

Down and Out
 Dzudi—Bilge is down and out, isn't he?
 Dinocan—Yes, he told me the other day he has to pay cash for everything.

Eyes Examined
 Glasses Fitted
DR. P. W. GREEN
 OPTOMETRIST
 Office: The Bank of Elkin Building
 Offices open daily for optical repairs and adjustments of all kinds. Examinations on Tuesdays and Fridays from 1 to 5 p.m. By Appointment Phone 146

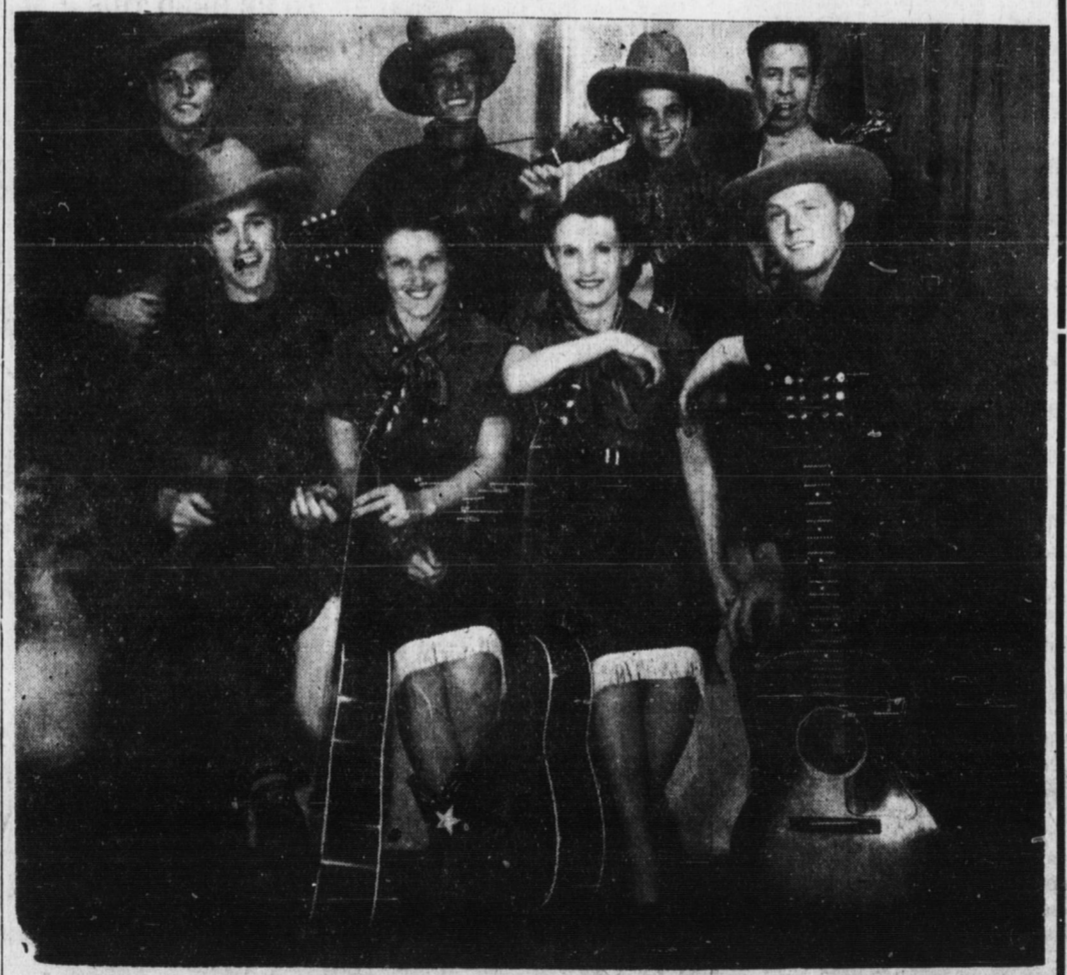
Holsum
 Don't Say Bread—
Say Holsum

THE LYRIC
 ALWAYS COMFORTABLE
 Natural, True to Life SOUND

TODAY ONLY—THURSDAY—
"Sherlock Holmes"
 News Admission 10c-25c

FRIDAY ONLY—
ROBERT MONTGOMERY As
"The Earl of Chicago"
 Selected Shorts Admission 10c-25c

SATURDAY—
BILL ("Wild Bill") ELLIOTT
 —IN—
"PIONEERS OF THE FRONTIER"
 —ON THE STAGE—



"THE COWBOY RAMBLERS"
 SINGING - DANCING - STRING MUSIC - COMEDY
 Cartoon - Serial - Comedy Admission 10c-30c

Note: After the close of school all teachers will be admitted for the special price of 10 cents on Monday afternoons only.

MONDAY-TUESDAY—NEXT WEEK—
 They're TAPPING Out The **TOPPER** of all TUNEFILMS!
Fred ASTAIRE
Eleanor POWELL
 in
"BROADWAY MELODY OF 1940"
 with
George MURPHY - Frank MORGAN - Jim HUNTER
Horace RICE - Lynne CARVER
 News - Cartoon Admission 10c-30c

WEDNESDAY—
"This Is My Heart"
 Cartoon - Serial Admission 10c to All

Reserved Seat TICKETS
 FOR NIGHT SHOWINGS OF
"Gone With the Wind"
 Go On Sale at Boxoffice
MONDAY, MAY 13TH
 3 Shows Daily—9:30 A. M. - 1:30 P. M. - 7:30 P. M.
ADMISSION
 MATINEES 75c — NIGHT \$1.10
 Note: Family Show Will Be Shown Thursday, May 23, Due to Showing of "Gone With the Wind" on Wed.
 REMEMBER—IT'S COMING
MAY 20 - 21 - 22

Royalair DOES YOUR CLEANING BETTER
A POWERFUL EFFICIENT Now CLEANER
 • Built by ROYAL
 As Illustrated \$39.95
 Many Additional Attachments Available

- CARPETS
- RUGS
- DRAPERIES
- VENETIAN BLINDS
- UPHOLSTERY
- LAMP SHADES
- BEDDING
- AUTOMOBILE INTERIORS
- DE-MOTHS
- DE-ODORIZES
- PURIFIES

HARRIS ELECTRIC COMPANY
 Phone 250 Elkin, N. C.

LYRIC THEATRE