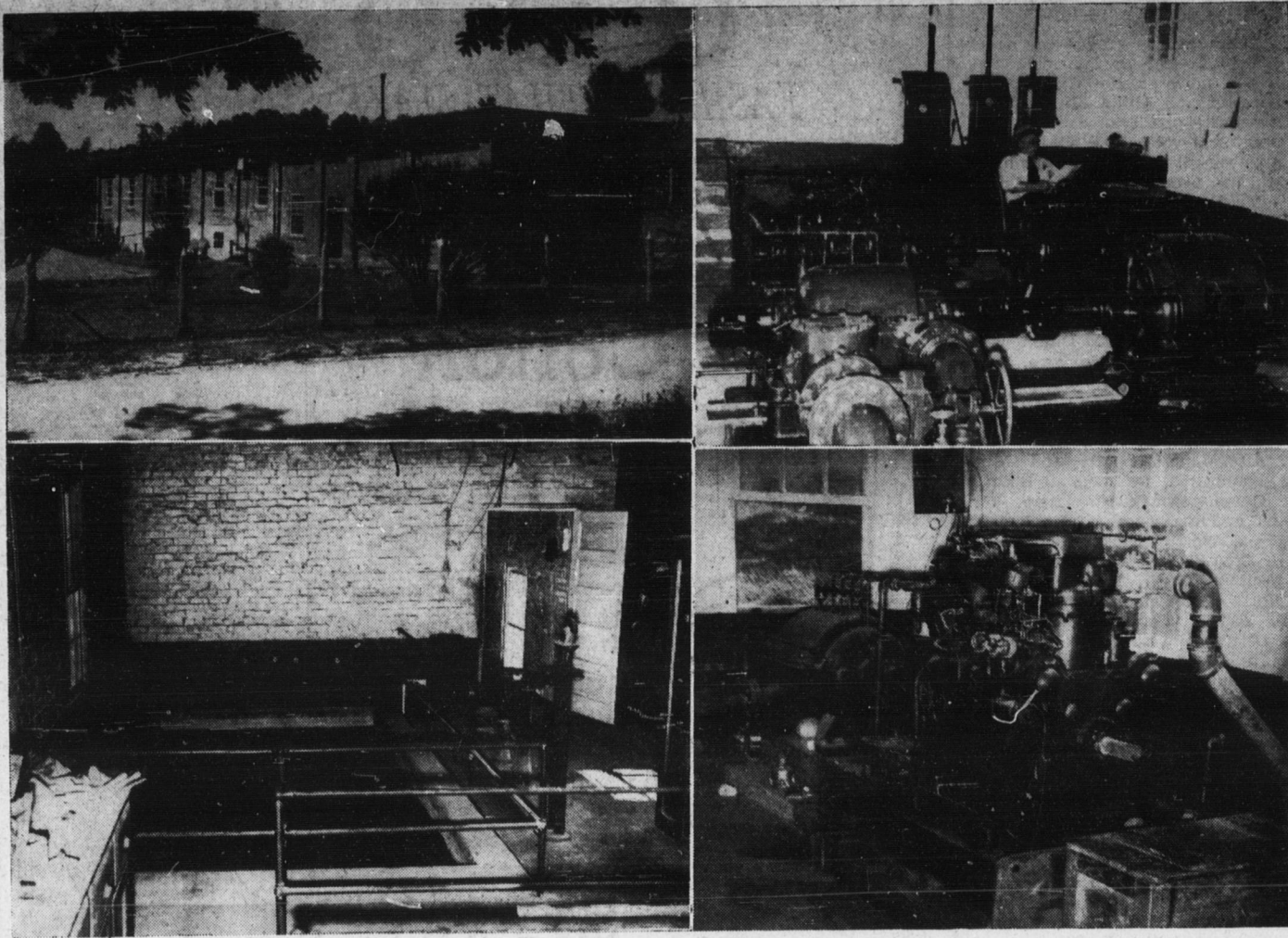


## Elkin's Water Supply As Good As Any in State



The majority of Elkin people take their water supply for granted, and know little of the water plant and its equipment which transforms creek water into pure, good tasting drinking water. The photos above were made in and around the plant. Top left is a view of the water department plant which houses pumps and filtering pools. Top right is view of new remodeled and re-equipped pump department, in which are located three electrically operated pumps with capacities of 240, 400 and 600 gallons per minute. Seated at desk in background is J. R. Windsor, superintendent of the water department, who did a majority of the remodeling himself. Lower left photo shows the smaller of the two filtering pools, which together filter an average of 290,000 gallons of water daily, although they are equal to an output of 400,000 gallons daily if needed. Lower right is the emergency pump and the marine type gasoline motor which runs it. This equipment can pump 800 gallons of water a minute if needed. It is for use only in case of electrical failure.—(Tribune Photos.)

## Elkin Water Plant Is Modern In Every Way; Adequately Equipped

Is Capable of Producing 400,000 Gallons of Water Daily if Needed, Although Average Output Is 240,000 Gallons; Plant Recently Rewired and Equipped for More Economical and Safer Operation; Water Is Rated High

To the average citizen Elkin's water supply is just something that runs out of the spigot when they turn it on. They know it's good water and plentiful, but they know very little, if anything, of the plant which operates day and night to keep their water good and pure and always on tap.

They also don't know that the town has just spent close to a thousand dollars in modernizing the water department plant, making it more efficient and safer for the men who operate it.

Elkin's drinking water is rated by the state as being as good as any found in the state. In purity it is unexcelled. In taste it is good. Yet all comes out of Big Elkin creek and an inspection of it as it flows to the filtering plant makes it look anything but good to drink.

To trace Elkin's water from the time it leaves the creek until it pours from the spigot is quite a journey. First the water flows from the creek into the new settling basin, recently constructed

across the creek from the old shoe factory. In this basin, which holds approximately 5,000,000 gallons, sediment in the water settles to the bottom, and it is from this basin that Elkin's water supply is drawn by the filtering plant. Two filtering pools are located in the plant, the water being filtered through various layers of gravel and sand, which removes practically all impurities. But germs that may be present in the water are too small to be filtered out, which calls for the use of chlorine gas.

As the water is filtered and pumped to two large reservoirs, each holding 100,000 gallons each, a complicated apparatus mixes the chlorine with the water, which purifies it so that it will be safe to drink.

From the reservoirs the water is pumped to Elkin's two large water tanks, the largest of which is located near the elementary school, and which holds 75,000 gallons. The second tank, recently constructed, is located in

North Elkin and holds 25,000 gallons. From these tanks it flows into the water mains, and becomes available to every spigot and every water hydrant in Elkin and Jonesville.

An average of 290,000 gallons of water is filtered daily by the plant, although 400,000 gallons could be filtered if need demanded.

Four pumps are located in the water department plant. Formerly operated by electric motors using 2,300 volts, three of these pumps are now powered by 220 volts, the motors having been rewired to operate on the smaller frequency in the interest of safety and economy. Prior to the change, lightning used to run into the plant, making all electrical storms a real hazard. J. R. Windsor, superintendent of the water department, said.

The fourth pump, with an output of 800 gallons a minute is reserved for emergency use, and is powered by a large gasoline engine of marine type. This pump is used only when failure of electricity might put the regular pumps out of operation.

In normal usage, only one pump is used, this pumping 240 gallons per minute. Two other electrically operated pumps are available, with an output of 600 gallons and 400 gallons per minute respectively. These pumps are used in case of fire when more than a normal amount of water is needed.

Citizens interested in making an inspection of the Elkin water plant are welcome, Mr. Windsor said.

Mr. and Mrs. Roy Mathis and family of Winston were week-end guests of Mrs. D. C. Mathis.

## Brooks Cross Roads

Mrs. Spencer Bell was called to McKeesport, Pa., Sunday night due to the death of her grandmother.

Mrs. Velma Weaver, Miss Gerry Weaver and Misses Mary and Carolyn Melton returned last week from Texas where they had

been visiting relatives for several days.

Edwin Shore, of Brevard, visited his parents, Mr. and Mrs. Miles Shore, over the week-end.

Mr. and Mrs. Tilden Byrd, of High Point, spent Sunday with her parents, Mr. and Mrs. J. C. VanHoy.

## EAST BEND

The Fall Creek Home Demonstration Club met in regular ses-

sion Saturday afternoon at the home of Mrs. E. E. Mounce. Mrs. Paul Fleming, club president, presided over the meeting. The program featured a demonstration by Miss Irene Brown on canning vegetables.

At the conclusion of the program the hostess, assisted by her daughters, Misses Nina and Doris, served delicious refreshments to the seventeen members and two visitors present.

Patronize Tribune advertisers. They Offer Real Values.

A CUSTOMER SAID ...

*Everybody in town seems to have the biggest tire bargain in history*

AND HERE'S WHAT WE ANSWERED...

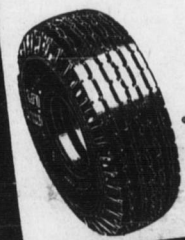
YOUR OLD TIRES ARE WORTH MORE TO US THAN THEY ARE TO YOU... COME IN AND FIND OUT WHY



Brisk demand for used tires—especially in certain sizes—makes it possible to pay you up to for each worn tire on your car (depending on size).

Sensational Value! THE U.S. TIRE

As Low As



(With your old tire)  
• "U.S. Tempered Rubber" Tread  
• "Safety-Bonded" cords  
• World-famous "U.S." tread design

It's not hard to claim sensational tire values, but when you really measure dollar for dollar and mile for mile, that's where the U. S. Royal De Luxe proves itself to be America's outstanding tire value.

**U.S. ROYAL De Luxe**

1. Greater Protection Against Blowouts! Every cord "safety-bonded," every ply a safety ply!
2. Greater Protection Against Skids! Famous "Brake-Action" tread with 2500 extra gripping edges controls skids, stops you quicker, safer, straighter.
3. Greater Protection Against Wear! Tempered Rubber tread, deeper non-skid design give you up to 38% more non-skid miles!

United States Tires are good tires

Free! EXPERT ADVICE Drive in any time! Without cost or obligation, we'll carefully inspect each tire for hidden cuts, cracks and bruises.

**US TIRES**



Double Guarantee  
1 Backed by written Lifetime Guarantee of the world's largest producer of rubber.  
2 Plus the added assurance of our personal guarantee of satisfaction.

G. M. A. C. BUDGET PLAN

**F-W CHEVROLET CO.**

Phone 255

Elkin, N. C.

Elkin's Newest

**ELK THEATRE**

Elkin's Coolest

Thursday, June 6—(Today)—

**"MONEY TO BURN"**

With the Higgans Family

Information Please - News — Admission 10c-25c

Friday-Saturday, Matinee and Night—

GORGEOUSLY FILMED IN NATURAL COLOR!

**THE GENTLEMAN FROM ARIZONA**



Beginning New Serial "Zorro's Fighting Legion" Mickey Mouse Cartoon — Admission 10c-25c

COMING—  
**"MY SON, MY SON"**

Monday-Tuesday, Matinee and Night—



**JOHN GARFIELD · ANN SHERIDAN PAT O'BRIEN**

**"CASTLE on the HUDSON"**

with BURGESS MEREDITH · Henry O'Neill · Jerome Cowan · Guinn "Big Boy" Williams · John Lili · An ANATOLE LITVIN Production · A WARNER BROS. First National Picture · Screen Play by Susan L. Miller, Jerome Helton and Courtney Terrant · From the Book by Lewis R. Loomis

Latest Issue "March of Time" — Admission 10c-25c

Wednesday, Matinee and Night—

**"ISLE OF DESTINY"**

In Natural Color with Wm. Gargan and June Lang

Admission Only 10c to All

WE CONGRATULATE THE OWNERS OF

**The Lewis Apartments**  
JUST COMPLETED IN ELKIN ON CHURCH STREET  
**Building Materials**

Used in this Modern Structure Were Purchased from Us  
YOU, TOO, MAY OBTAIN THE SAME HIGH QUALITY MATERIALS, THE SAME SATISFACTORY SERVICE, IF YOU DEAL WITH US!

**Elkin Lumber & Mfg. Co.**

"EVERYTHING TO BUILD ANYTHING"  
Phone 68 Elkin, N. C.