

**Safeguard the Crops**

You cannot afford to trust the results of many months' labor to the uncertainty of an old inflammable building. Concrete barns and silos protect you against loss by fire by preventing it.

The cost of permanent, firesafe and verminproof farm structures is low, too, for Portland Cement is the cheapest of all materials undergoing a manufacturing process.

Ask your building material dealer the advantages of using Atlas Portland Cement in construction work.

**ATLAS PORTLAND CEMENT**

*"The Standard by which all other makes are measured"*

**BUY CONFEDERATE MEMORIAL COINS.**

The Nation's Tribute to the South.

Every Southern man and woman, every boy and girl, in whose veins flows the blood of the heroes of 61-65, should want to possess one or more Confederate Memorial Half Dollars.

These beautiful coins, minted by the United States Government, are a Nation's Tribute to the valor of the Southern soldier. They are the final seal of Reconciliation, that the North and South, the East and the West, go forward henceforth, united as one people, serving the same high ideal, the same great destiny.

Proceeds from the sale of the Confederate Memorial Coins will be used to save the great monument to the heroes of the South at Stone Mountain, Ga. The monument will be the greatest ever constructed by the hand of man. It is being built by the contributions of patriotic citizens from every State. It must be completed while the heroes of 61-65 yet live, that they may again look upon the features of their great chieftain, unshined for the ages.

To carry forward this great trust is a solemn and sacred obligation on every Southern heart. The South can-

not, the South must not fail. Facts About the Confederate Memorial at Stone Mountain.

Stone Mountain is situated sixteen miles east of Atlanta in DeKalb county, Georgia.

Across this mammoth background of granite is being carved the greatest monument of history in memory of the men and women who dared all suffered all for the Confederacy.

Beginning at the summit of the precipice and sweeping downward a distance of 1,250 feet, will be carved in full relief a Panorama representing the Confederate forces and their leaders. Artillery appears at the top as if coming over the mountain. On the left the artillery will be Confederate cavalry in motion. In the center where the mountain bulges forward in a great promontory will be carved a colossal group representing the Confederate high command.

Even without the Panorama, the Central Group alone would surpass all other monuments. It will consist of Robert E. Lee, General Stonewall Jackson, President Jefferson Davis and four outstanding generals are being selected by an historical commission composed of the state historians of the thirteen Southern States. All of the seven will be on horseback. General Lee's head and hat cover an area twenty-five feet square. A dozen men can be seated comfortably on the brim of the hat. The head of General Lee's horse will be more than forty feet from the tip of the nostril to the tip of the ear. President Davis, General Jackson and the other figures of the Central Group will be of the same immense proportions.

Certificates redeemable in Confederate Memorial half dollars on July 30th are now being sold at one dollar each by banks and volunteer committees of citizens in all Southern communities.

For sale: Potato plants, 50 cents per hundred or mail W. C. Allison, Sylva, N. C.

**PAINS ALL OVER**

**Lady Says She Took Cardui and Never Saw Such Improvement—Was So Weak Couldn't Stand.**

Weathersby, Miss.—Mrs. James M. Hall, of this place, writes that she was "getting weaker all the time" when Cardui, the woman's tonic, was first brought to her attention. After she had taken Cardui a while, she writes that she "never did see such an improvement."

"I suffered all the time and had pains all over," says Mrs. Hall. "I was so weak I could not stand. My skin was cold and flabby. I did not have any color. I had always been a very active woman—used to outdoor exercise, walking and going where I pleased; and to get down, not able to get myself a drink, was indeed a hardship.

"Nothing seemed to help me, till I began on Cardui. The first bottle seemed to strengthen me, and I sent for five more. By the time I had taken these, I was on my feet, going around, doing my work, gained in health and strength.

"I took two more bottles, and I am well and strong. Can work my garden. I just had my more sickness."

Ask your druggist. NO-165



**The ODDS against the OIL**

They're long, longer than most of us ever realize. Heat, dust, dilution, pressure, speed, and tiny clearances are just a few of them. But we'll bet on "Standard" Motor Oil, for it's a thoroughbred.



Based on over 50 years' experience

Miss Elizabeth Rogers of Clyde, Route 1, was a Waynesville visitor on Wednesday.

Mr. and Mrs. Mac Johnson and Miss Nell Miller of Brevard were visiting friends in Waynesville last Sunday.

**Southern Railway System Sunday Excursions**

Until September 27th, the Southern Railway will sell Sunday excursion tickets from all stations between Asheville and Murphy to any station on the Murphy Division where the round-trip can be completed on train returning passengers to starting point before midnight same day.

Rates for these outings will be on basis of one fare plus 25 cents for the round-trip.

Call on your Local Ticket Agent for rates and passenger train schedule.

**J. H. Wood.**  
Division Passenger Agent,  
Asheville, N. C.

**Spotless Stores Courteous Service and Tell Tale Valves.**



Three Reasons why you see our Store so busy. You too can serve your family better food at no extra expense. The prices at our nearest store will convince you.

- Compound Lard, lb. 16c
- A&P Baked Beans, 3 cans for 25c
- Iona Brand Tomatoes, can 10c
- Iona Brand Sauerkraut, can 13c
- Norwegian Imported Sardines 2 cans, 25c
- Sunnyfield Brand Corn Flakes, pkg. 8c
- Astor Brand Rice, 3 pkgs. for 25c
- A&P Brand Salad Dressing, jar 14c
- Window Screens, each 59c
- Fly Swatters, each 5c

**THEA-NECTAR-TEAS**

Orange Pekoe-India Ceylon-Mixed  
2 oz. pkg. 10c. 4 oz. pkg. 19c. 8 oz. pkg. 37c

Good hitching lot in rear of Store.

THE GREAT ATLANTIC & PACIFIC TEA CO.  
JUST AROUND THE CORNER FROM EVERYBODY.  
Corner East and Main Street Waynesville



**The Most Popular Closed Car Ever Built**

In the Tudor Sedan, Ford dependability of chassis and engine, are matched with an attractive, sturdy and unusually well-designed body. It has many conveniences that only Ford economy methods of production could make possible at the price.

The Tudor is a practical family car—which anyone can drive, and which will give you pleasing and satisfactory service for years. Ask a dealer to give you a demonstration. He will gladly do so at your convenience.

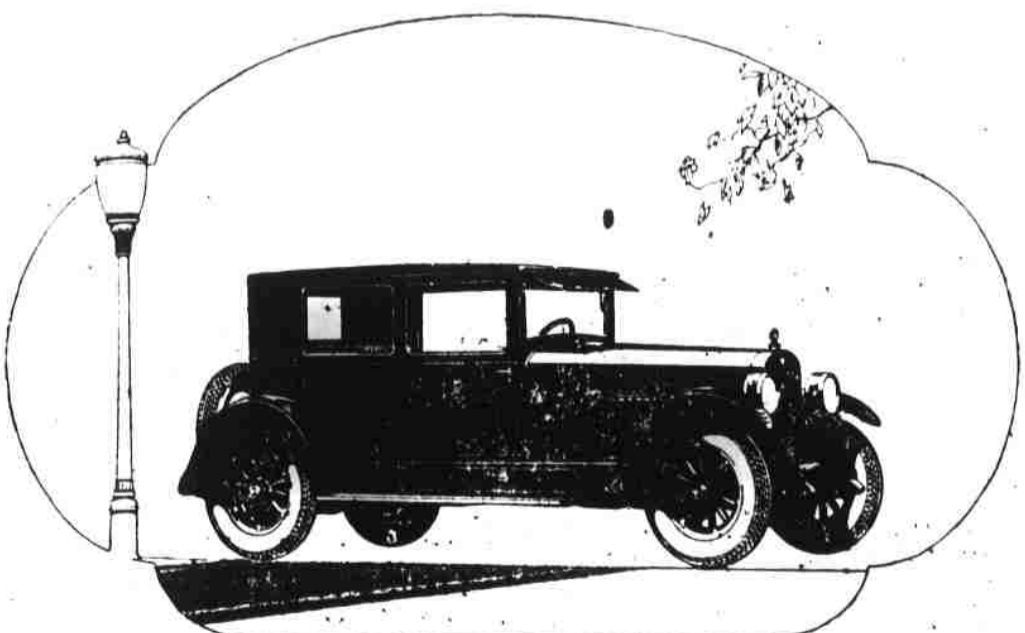
*Ford Motor Company Detroit*

TUDOR SEDAN	Runabout	— \$260
\$580	Touring Car	— 290
	Coupe	— 520
	Fordor Sedan	— 660

Full size balloon tires \$25 extra. On open cars demountable rims and starter are \$85 extra. All prices f. o. b. Detroit



MAKE SAFETY YOUR RESPONSIBILITY



Announcing a New Type The BROUGHAM \$1595

7-Pass. Sedan \$1795  
Freight and Tax Extra

**\$1250 for the HUDSON COACH**

The world's largest production of 6-cylinder cars permits the lowest prices in Hudson history. And for the finest Hudsons ever built. Thus Hudson is more than ever the "World's Greatest Buy."

Hudson-Essex Now World's Largest Selling 6-Cylinder Cars