

**HUNT'S
KETCHUP**

LIMIT 1 WITH
'20.00 FOOD ORDER

32 OZ.

59^c

LIMIT 1 WITH
'10.00 FOOD ORDER **79^c**

**DIXIE CRYSTAL
SUGAR**

LIMIT 1 WITH
'20.00 FOOD ORDER

5 LB.

\$1.29

LIMIT 1 WITH
'10.00 FOOD ORDER **\$1.45**

**BLUE BONNET
MARGARINE**

LIMIT 1 WITH
'20.00 FOOD ORDER

1 LB.

29^c

LIMIT 1 WITH
'10.00 FOOD ORDER **49^c**

CLOROX

LIMIT 1 WITH
'20.00 FOOD ORDER

1 GALLON

59^c

LIMIT 1 WITH
'10.00 FOOD ORDER **79^c**

FREE

\$50.00 CASH

\$25.00 CASH

\$10.00 CASH

EACH WEEK

**TEACHEY'S
SUPERMARKET**

ACROSS STREET FROM PINK HILL SCHOOL
PINK HILL, N. C.

**BE SURE AND
CHECK YOUR
NUMBER - YOU
COULD HAVE BEEN
LAST WEEK'S
WINNER**

LANCE 5 PKGS. **99^c**
NABS

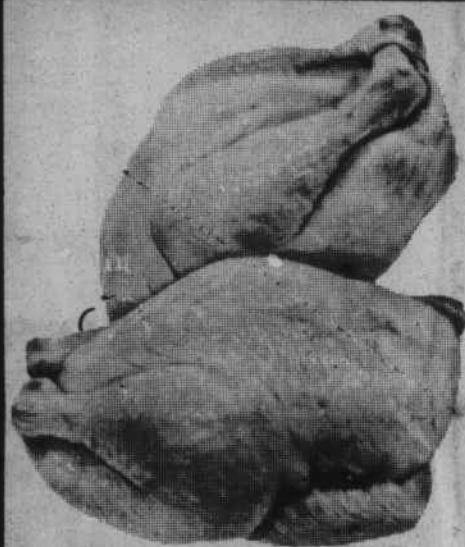
SAUER'S SALAD DRESSING QT. **89^c**

PRIDE OF FARM SWEET PEAS 303 CAN **3/\$1⁰⁰**

GREER APPLE SAUCE 303 CAN **3/\$1⁰⁰**

TOWN TALK ICE CREAM 1/2 GAL. **\$1¹⁹**

COMET RICE 28 OZ. **76^c**



**WHOLE
FRYERS**

(LIMIT 4 WITH
'10.00 FOOD ORDER)

42^c LB.

WESTWATER COUNTRY **HAMS** LB. **\$1⁵⁹**

CURTIS **FRANKS** 12 OZ. **89^c**

NECKBONES LB. **49^c**

PIG FEET LB. **49^c**

STANDING **RIB ROAST** LB. **\$2⁵⁹**

RIB STEAK LB. **\$2⁴⁹**

TOP **ROUND STEAK** LB. **\$2²⁹**

BOTTOM **ROUND STEAK** LB. **\$2⁰⁹**

BONE-IN FULL CUT

**ROUND
STEAK**

\$1⁵⁹ LB.



TRESWEET ORANGE (6PK.-6 OZ.) **JUICE** **99^c**

ROYAL GUEST AMERICAN SINGLES **CHEESE** 12 OZ. **\$1⁰⁹**

FRESH CRISP **LETTUCE** HEAD **49^c**

YELLOW **ONIONS** 3 LB. **69^c**

RUTABAGAS **18^c** LB.



**RUFFLES
POTATO CHIPS**
8 OZ.

69^c



**KRAFT
GRAPE JELLY**
2 LB.

99^c



**SOUTHERN
BISCUIT**

FLOUR
5 LB.

79^c



CRISCO OIL
24 OZ.

99^c



**LIPTON
TEA BAGS**
100 CT.

\$1⁹⁹



**MINUTE
MAID
ORANGE
JUICE**

1/2 GAL.

\$1⁰⁹



**WHITE CLOUD
TOILET TISSUE**
4 PK.

99^c



**LEMON
FRESHENED
BORAX
Fab**

FAB GT. SIZE

\$1⁶⁹