

**FROZEN  
FRENCH  
FRIES**

**2 LB.**

**2/79<sup>c</sup>**

**CATES  
SWEET  
SALAD  
CUBES**

**16 OZ.**

**69<sup>c</sup>**

**WHITE  
HOUSE  
APPLE  
JUICE**

**48 OZ.**

**89<sup>c</sup>**

**SAV  
MOR  
MARGARINE**

**1 LB.  
PKGS.**

**3/\$1**



**PETER PAN  
PEANUT  
BUTTER**  
18 OZ.

**\$1.39**

WE RESERVE THE RIGHT TO LIMIT QUANTITIES

**TEACHEY'S  
SUPERMARKET**

ACROSS STREET FROM PINK HILL SCHOOL  
PINK HILL, N. C.

WHERE YOUR FOOD STAMPS GO FURTHER



**STOKELY'S  
CATSUP**  
32 OZ.

**79<sup>c</sup>**

**DUKE'S** QT.  
**MAYONNAISE** **79<sup>c</sup>**

MASTER BLEND

**COFFEE** 13 OZ. BAG **\$1.99**

ICE CREAM

**SANDWICHES**

6 PK.

**2/\$1.19**

**ROYAL GUEST**

**PEACHES** 2 1/2 CAN **59<sup>c</sup>**

303 CANS

**TOMATOES** **3/\$1**

**CAMPBELL'S NO. 1 CHICKEN  
NOODLE O'S, CREAM OF CHICKEN  
& CHICKEN WITH RICE**

**SOUPS** **3/\$1.00**



**SIRLOIN  
STEAKS**

**\$1.99**  
LB.

T-BONE

**STEAKS** LB. **\$2.29**

PORTERHOUSE

**STEAKS** LB. **\$2.19**

CLUB

**STEAKS** LB. **\$2.29**

FROSTY MORN

**BOLOGNA** 1 LB. **\$1.39**

FROSTY MORN HONEY GOLD

**SAUSAGE** 12 OZ. **\$1.19**

FROSTY MORN

**FRANKS** 12 OZ. **99<sup>c</sup>**

GROUND

**CHUCK** LB. **\$1.59**

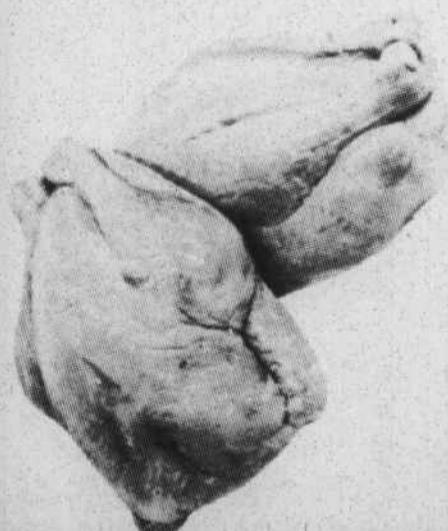
RAT

**CHEESE** LB. **\$1.89**

(LIMIT 4 WITH  
\$10.00  
FOOD ORDER)

**FRYERS**

**39<sup>c</sup>**  
LB.



WHITE CLOUD TOILET 4 ROLL PKG.

**TISSUE** **99<sup>c</sup>**

HI-DRI

**TOWELS** **2/95<sup>c</sup>**

3 LB. BAG

**ONIONS** **32<sup>c</sup>**

1 LB. BAG

**CARROTS** **19<sup>c</sup>**

WHITE

**POTATOES**

10 LB.

**89<sup>c</sup>**



**SMUCKER'S  
GRAPE  
JELLY**  
32 OZ.

**\$1.09**



COLD POWER

**WASHING  
POWDER**

GT. SIZE

**\$1.39**



**24  
COUNT  
LIPTON**

**TEA BAGS**

**\$1.19**



**5 OZ.  
ARMOUR'S  
VIENNA  
SAUSAGE**

**2/79<sup>c</sup>**