



OFFICERS AND LEADERS - ALBERTSON 4-H CLUB - Shown above, left to right, Marsha Britt - volunteer leader; Brentwood Lee, Vidette Rouse, David Lee, and Linda Rouse, volunteer leader. Not pictured: Leslie Murphy and Missy Stroud.

Albertson 4-H Club Formed

The newest 4-H club in Duplin County has recently been organized in the Albertson community. The club, under the leadership of Mrs. Linda Rouse and Mrs. Marsha Britt, have elected officers and have begun planning their calendar for the coming year.

Newly elected officers are: Vidette Rouse - president; David Lee - vice president;

Leslie Murphy - secretary-treasurer; Brentwood Lee, reporter; and Missy Stroud - songleader.

Anyone wishing to join the Albertson 4-H Club should contact Linda Rouse or Marsha Britt.

The 4-H program is coordinated through the Agricultural Extension Service in Kenansville. Four-H is open to all youth ages 9-19 regardless of race, color, sex or national origin. If you would like to form a club in your community, contact Ray Rhinehart, associate extension agent, 4-H, at 296-1996.

Extension Home Ec Buying A Coat

When winter sets in, having a coat in need of repairs can be a hassle. One way to prevent that is to check the durability of fastenings before you buy a winter coat.

A quality coat has buttons that are securely sewn on and a few extras sewn on the inside in case you lose one. Coat buttons can be impossible to match, and replacing all the buttons can get expensive.

If the coat has snaps, be sure they grip the fabric tightly. Test how they work a couple of times. Look for snaps that pull apart without putting too much stress on the coat fabric.

For coats with zippers, double check to be sure the zipper won't get caught on the coat lining. Also, does the zipper look heavy enough to last as long as the coat?

For most families, a new winter coat is a clothing investment that you will want to last for a few years. So, take some time to look over the buttons, snaps and zippers carefully. Most important, try them out several times to be sure the fastenings will work to your satisfaction.

Draft Dodger

Winter winds are starting to blow, and some of that cold air could come whistling in under the doors of your house.

If you are handy, you can use your sewing machines, the scrap basket and the children's sandbox to put together an effective and attractive barrier against the cold drafts. You can make a sand-filled tube called a draft dodger.

Here's how - First, cut a lining from a sturdy leak-proof fabric such as an old rubberized raincoat, oil cloth or a vinyl tablecloth. Cut the lining eight inches wide and as long as the width of your door and frame - plus two inches.

For the outer covering, select a fabric that complements the room's color scheme. Cut this piece nine inches wide and the same length as the lining.

Use a 5/8-inch seam allowance as you sew the lining fabric to form a tube. Leave one end open. Turn the tube right side out and fill with dry, sifted sand. Pack in enough sand so the tube is firm, yet flexible. Stitch the end shut.

Sew the outer fabric to make a second tube. Turn it right side out and work the sand-filled lining into the outer tube. Adjust to fit and sew the end shut.

The draft dodger is ready for duty to prevent cold drafts from coming in under the doors of your home.

Preventing White Clothes from Turning Gray

If some of your white clothes are beginning to look a bit gray around the edges, keep this in mind. Graying may be caused by overloading the washer, insufficient hot water, insufficient detergent, improper soaking or failure to use bleach.

Let us think about each one, starting with overloading the washer. When the washer is too full, some articles may not receive proper flexing action. The solution is to follow the loading procedures outlined in the operating instructions

Presiding will be Dr. Harold C. Doster, president of the college. The prayer will be offered by Dan Hensley Jr., director of church relations. Music will be provided by the ACC Band under the direction of Allen Molineux, and the ACC Choir under the direction of Robert Daniel.

Sen. Hardison is a native of Deep Run and received his education at ACC. He was elected to the N.C. House of Representatives in 1972, 1974, 1976, 1978 and 1980. He now serves as chairman of the Senate Appropriations committee and is vice chairman of the ways and means committee, and is a member of other senate committees.

A businessman, he was a founder of Humphrey-Hardison Oil Co., and Humphrey Hardison Inc. in Deep Run and established Eastern United Tires, Inc. of Kinston in 1976, and Goldsboro in 1980. He served on the Deep Run school board for 21 years and serves on the board of directors of the N.C. National First Financial Savings and Loan and Mount Olive College.

Hardison is a member of the Deep Run Free Will Baptist Church where he serves as a Sunday School teacher and has served as chairman of the finance committee.

He is married to the former Arlene Humphrey of Deep Run. They have one daughter.

Hardison To Speak At ACC

Senator Harold W. Hardison of Deep Run will be the featured speaker for Atlantic Christian College's spring convocation to be held on the campus on Thursday, Jan. 27 at 11 a.m. in Howard Chapel.

A portion of the convocation will be a memorial to the late Lawrence A. Moye.



FARM EQUIPMENT SALE NEEDHAM PARKS

Route 2, Seven Springs, N. C.

Saturday, January 29, 1983

10:30 A.M.

- | | |
|---|--|
| 1-175 A.C. Diesel Tractor—70 h.p. | 1-2-Row John Deere Corn Planter |
| 1-160 A.C. Diesel Tractor—55 h.p. | 1-14' Boom |
| 1-24-Blade A.C. Trailer Disk | 1-Davis Tobacco Harvester—Ferris Wheel |
| 1-2-Row A.C. Rolling Cultivator | 1-Davis Tobacco Harvester "Parts" |
| 1-3-16" A.C. Tripp Breaking Plow | 1-4-Row Tobacco Sprayer |
| 1-2-Row Lillian Rolling Cultivator-Fertilizer Distributor | 1-3-Point Fork Lift |
| 1-2-Row Holland Transplanter-Fertilizer Attachment | 1-2-4-D Sprayer |
| 1-2-Row Tobacco Treating Rig Cultivator | 1-Gasoline Motor and Pump |
| | 1-Farm Trailer |
| | 1-2-Row Stalk Cutter |
| | 1-Water Tank |
| | 1-Five Tobacco Pallets |

Other items too numerous to mention

NOT RESPONSIBLE FOR ACCIDENTS

Terms: Cash or Good Check

DIRECTIONS: Eight miles East of Mount Olive between Bones Chapel and Bliz yards and Holmes Mill on State Road No. 1501. At Paly Bridge on Catherine Goodson Farm. Watch for signs.

FOR MORE INFORMATION, CONTACT:

NEEDHAM PARKS (919) 658-3701

AUCTIONEERS

JAMES H. PARKER, JR. NCAL No. 1049 658-2700

JIMMY PARKER NCAL No. 1049 658-4375

PEPPERELL CARPETS

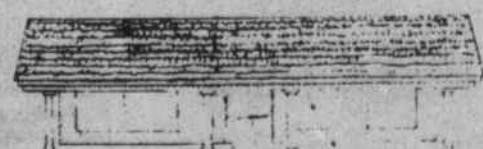
Our 30th Year

- Direct from the Mill Prices
- We Carry Our Own Accounts
- No Waiting
- Over 300 Rolls of Vinyl & Carpet in Stock
- Our Own Professional Installation
- Lowest Prices

We're Bigger Than We Look. Displaying 28,000 Sq. Ft. of Furniture & Carpet in a 14,000 Sq. Ft. Store.

"One of the best things we have is our price."

FREDERICK FURNITURE COMPANY



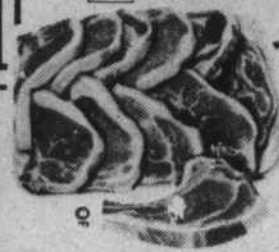
HWY. 117 - ROSE HILL PHONE 289-3448

NEW W.H. JONES

GROCERIES - HARDWARE - DRY GOODS
PINK HILL, N.C. *AA*

NOW TWO LOCATIONS TO SERVE YOU BETTER NEW LOCATION-315 SOUTH HERITAGE ST. KINSTON, N.C. PHONE 527-4206 (FORMERLY DUKE FARM SUPPLY)

FERTILIZER BULK LIME NITROGEN
 CHEMICALS FOR MORE INFORMATION CALL HOUSTON HOWARD 568-3171



LUNDY PORK CHOPS CENTER CUTS

\$1.89 LB.
FIRST CUTS LB. '1.29

LB. LUNDY'S PORK RIBS \$1.49
LB. LUNDY'S PORK NECKBONES 59¢
10-LB. PKG. '4.95
4-LB. BUCKET LARD \$1.69

CLARK'S FRESH SAUSAGE 10-LB. BOX '16.50
COZART'S SMOKE SAUSAGE 10-LB. BOX '12.50

12 OZ. KELLOGG'S CORN FLAKES 79¢
MARTINDALE NO. 2 1/2 CAN 79¢
5-LB. YAMS SHAWNEE FLOUR 99¢



KRAFT PARKAY MARGARINE 1-LB. PKGS.

2/\$1

JOY DISH DETERGENT GT. SIZE

\$1.39

COMET RICE 28 OZ. 79¢



PEPSI-COLA, COCA-COLA OR DR. PEPPER 24 BOTTLE CRATES-10 OZ. \$3.79



PEPSI-COLA, COCA-COLA & DR. PEPPER 2 LITER BOTTLES 89¢



DRY GOODS MEN'S FLANNEL SHIRTS

25% OFF MEN'S SWEATERS 1/2 PRICE LADIES BLAZERS 25% OFF



ONE LOT LADIES HOSE AND KNEE SOCKS

1/2 PRICE

SEE US FOR ALL YOUR HARDWARE & FARM SUPPLY NEEDS

- SHELF HARDWARE SMALL APPLIANCES
- SAMPSON PAINT ROLL ROOFING
- 5 V TIN FARM CHEMICALS-ALL KINDS
- GARDEN CHEMICALS-ALL KINDS GARDEN SEED-ALL KINDS
- SAMPSON PAINT STILL 20% OFF
- ALLADIN HEATERS STILL 10% OFF
- CONOCO ANTIFREEZE '2.99 GAL.