



Joe Lanier

SON of A gun

Duplin County's Board of Commissioners are faced with the fact that some \$4 million must be cut from the budget requests for 1983-84 if the property tax rate is to stay the same. . . Thus, it is doubtful if any department will receive their full request. . . Thus, the school board will probably be looking at a cut in their request for a million dollars new money. There is one thing in this school budget that I believe is a must that comes under new money. That is the \$56,000 it will take to refurbish the typing labs at two of the county's high schools. At the present time the typing labs or business classes are stocked with manual typewriters. Today's modern business offices are stocked with electric typewriters and word processors (a type of computer-typewriter). It seems extremely unfair that students in Duplin County must be taught typing and business procedures on typewriters that are behind the times as are Model A cars. . . The plan is to set up 16 electric typewriters and 16 word processors in the two high schools chosen this year and to repeat the process next year in the two remaining high schools. . . Also, in the two high schools that do not receive new typing machines this year, they will receive a computer lab — which is federally funded. . . That, too, will be flip-flopped next year, with the other two high school receiving computer labs. . . However, it will not be a choice of the county commissioners as to whether this will be funded. . . That will be the duty of the school board. . . They will undoubtedly have to make the tough decision — which is more important to the students of Duplin County. . . New learning machines or Southern Association accreditation.



Along the Way

By **Emily Killeto**

The tobacco program has gone through many changes since 1941. Today farmers designate to sell their poundage with a warehouse and are treated equally regardless of the allotment size.

In the past several years, the tobacco farmers have enjoyed the benefits of warehouse designation, which is done in the spring. The designation program allows small and large allotment holders equal consideration for market space throughout the season. Farmers are in the process of designating warehouses with the local Agricultural Stabilization and Conservation Service office. The designation deadline is April 15.

An article was published in the August 21, 1941, issue of THE DUPLIN TIMES. Wallace tobacco warehousemen outlined reasons to sell within Duplin. Wallace had two tobacco warehouses in 1941; today there are four markets in the town. The 1941 warehouses will sound familiar because they are still operating today! Hussey, and Blanchard & Farris (known as the Brick Warehouse) were the tobacco markets open within Wallace in 1941. Wallace's markets today include Hussey, Blanchard & Farris, New Duplin and New Sheffield.

The 1941 publication outlined an argument which still makes sense today — selling Duplin-grown tobacco within its home county. Listed as one reason to consider selling in Duplin was the operators of the warehouses, W.L. "Bill" Hussey and George D. Bennett at Hussey's and O.C. Blanchard and W.H. Farris at the Brick Warehouse were considered seasoned tobacco men with a knowledge of the local farmers' needs. The Wallace warehouses could be favorably compared to any larger tobacco market and were well-staffed, roomy and light. All major tobacco companies sent representatives to the Duplin warehouses

and local markets would save transportation costs for the farmer.

This year, as each year, the U.S. Tobacco Grading Service has requested the establishment of nine new grades and the deletion of 10 old grades. The new grades as proposed are: CSLP, low quality lemon priming-side cutters; CSFP, low quality orange priming-side cutters; X4LL, fair quality whitish-lemon lugs; C4LL, fair quality whitish-lemon cutter; B4DK, fair quality dark-red variegated leaf; BSDK, low quality dark-red variegated leaf; B6DK, poor quality dark-red variegated leaf; X4S, fair quality slick lugs; and C4KF, fair quality variegated orange cutters. The grades, B4R, H1F, H2F, M4F, M5F, M4KR, M5KM, M4GK and M5GK are suggested to be deleted from the grading system.

The Tobacco Associates' 36th annual report listed North Carolina's 1983 tobacco quota at 584,298,000 pounds. North Carolina far exceeds the quota of the over five tobacco-producing states. Alabama's production quota for 1983 is 743,000 pounds, Florida, 19,157,000 pounds; Georgia, 94,864,000 pounds; South Carolina, 113,930,000 pounds; and Virginia, 79,391,000 pounds. The North Carolina quota will more than quadruple the poundage of its nearest competitive tobacco-producing state. This state's large share of the total tobacco poundage grown in the U.S. should make North Carolina citizens aware of the role of tobacco in our state's economy.

Be aware, Duplin and North Carolina citizens, elections will be held for many political offices this year. Make sure the candidate pledges support for tobacco and check his past voting record. Does he support tobacco? A vote for a candidate not supporting tobacco would be a ballot cast against the state of North Carolina.

STATE INSPECTED

To Cut, Grind & Wrap Meats

JONES

FOOD STORES BEULA VILLE

STORE HOURS

8 TILL 7
6 DAYS A WEEK

Limestone

Village

WE RESERVE THE RIGHT TO LIMIT QUANTITY



BONELESS CHUCK ROAST

\$1.58 LB.

3 LBS. OR MORE
GROUND CHUCK \$1.69 LB.
BONELESS STEW BEEF \$1.79 LB.
BONELESS SHOULDER ROAST \$1.89 LB.

SHAWNEE 5 LB. BAG
FLOUR 77¢

PARKAY
MARGARINE
LB. PACK
2/\$1.00

5 OZ.
MERICO BUTTER-ME-NOT
BISCUITS 5/\$1

2 1/2 SIZE CAN
ROYAL GUEST SLICED
PEACHES 69¢

PILLSBURY INSTANT
HUNGRY JACK 16 OZ.
POTATOES 79¢

LA SAUCE SWEET & SOUR
SAUCE 17 OZ. 99¢

EMBERS 20 LB. BAG
CHARCOAL
\$3.19

TREESWEET FROZEN
ORANGE
JUICE 12 OZ. 89¢

KRAFT
MAYONNAISE
QT.
\$1.39

1/2 GAL.
CAROLINA ALL STAR ICE
CREAM \$1.69



FROSTY MORN 12 OZ.
FRANKS 99¢

FROSTY MORN 12 OZ.
BACON \$1.09

FROSTY MORN HONEY GOLD 12 OZ.
SAUSAGE \$1.29

FROSTY MORN
BOLOGNA LB. \$1.39



WHOLE SMOKED HAMS

16-18 LBS. **88¢** (HALVES OR SLICED 99¢ LB.)
LB.

CAROLINA SMOKED SAUSAGE

\$1.39
LB.

INDEPENDENT CAMBRIDGE COUNSELOR

Extraordinary weight loss - Lifetime Nutrition - Personalized Counseling

YOUR INDEPENDENT COUNSELORS ARE:

Jerald and Virginia Harper

Route 1, Box 254
Albertson, N.C. 28508

Phone (919) 568-3019



OLD HICKORY
BARBECUE

\$1.99
LB.



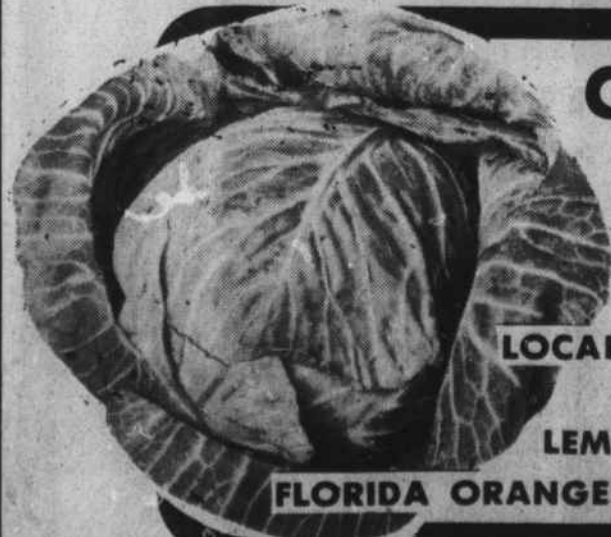
PILLSBURY
CAKE MIX

59¢
BOX



MUELLER'S THIN
SPAGHETTI
LB. BOX

59¢



CABBAGE

12¢
LB.

LOCAL SPRING ONIONS
39¢ BUNCH

LEMONS 3/29¢

FLORIDA ORANGES \$1.39 5 LB. BAG



PEPSI, COKE & MT. DEW

2 LITER

89¢

Farm Machinery Auction Sale

Tuesday, April 19th at 10 am

150 Tractors, 350 Implements

We buy & sell used equipment daily

Wayne Implement Auction Corp.

Highway 117 South P.O. Box 233, Goldsboro, N.C.
N.C. Lic. 188 (919) 734-4234