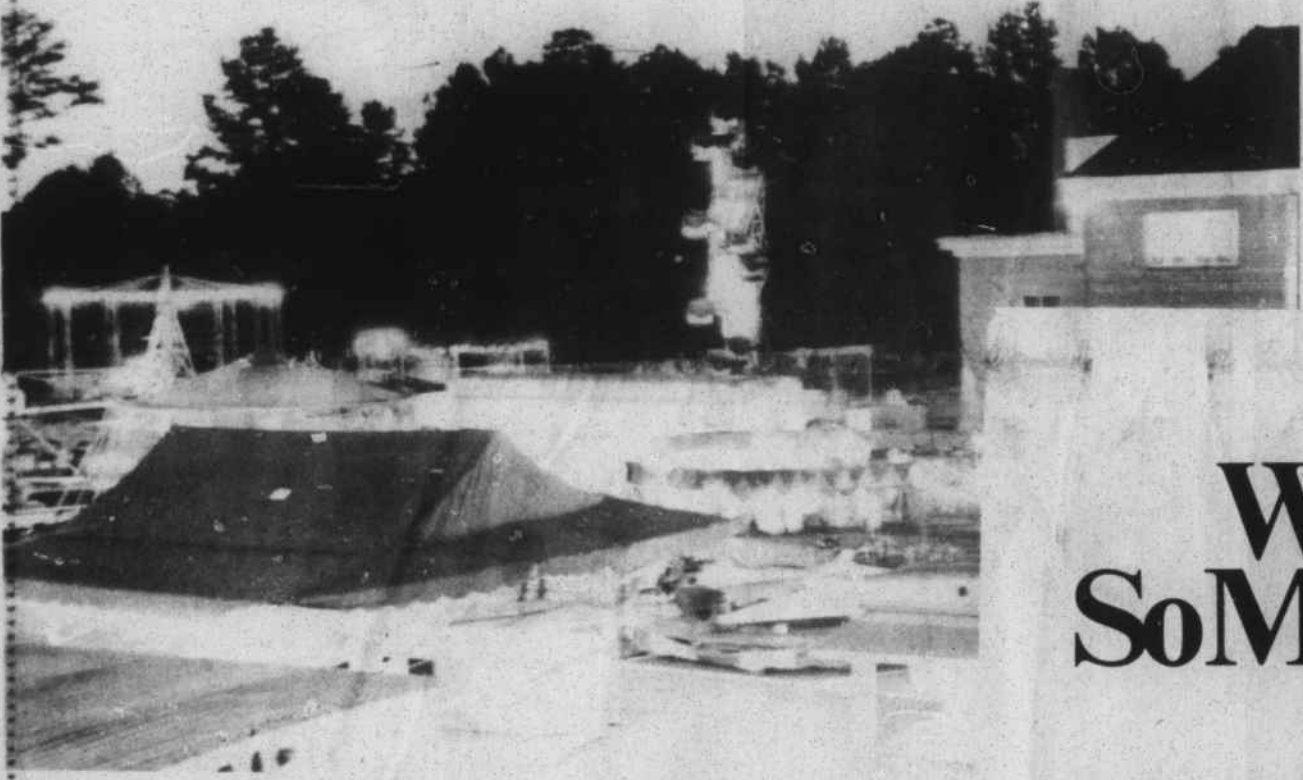
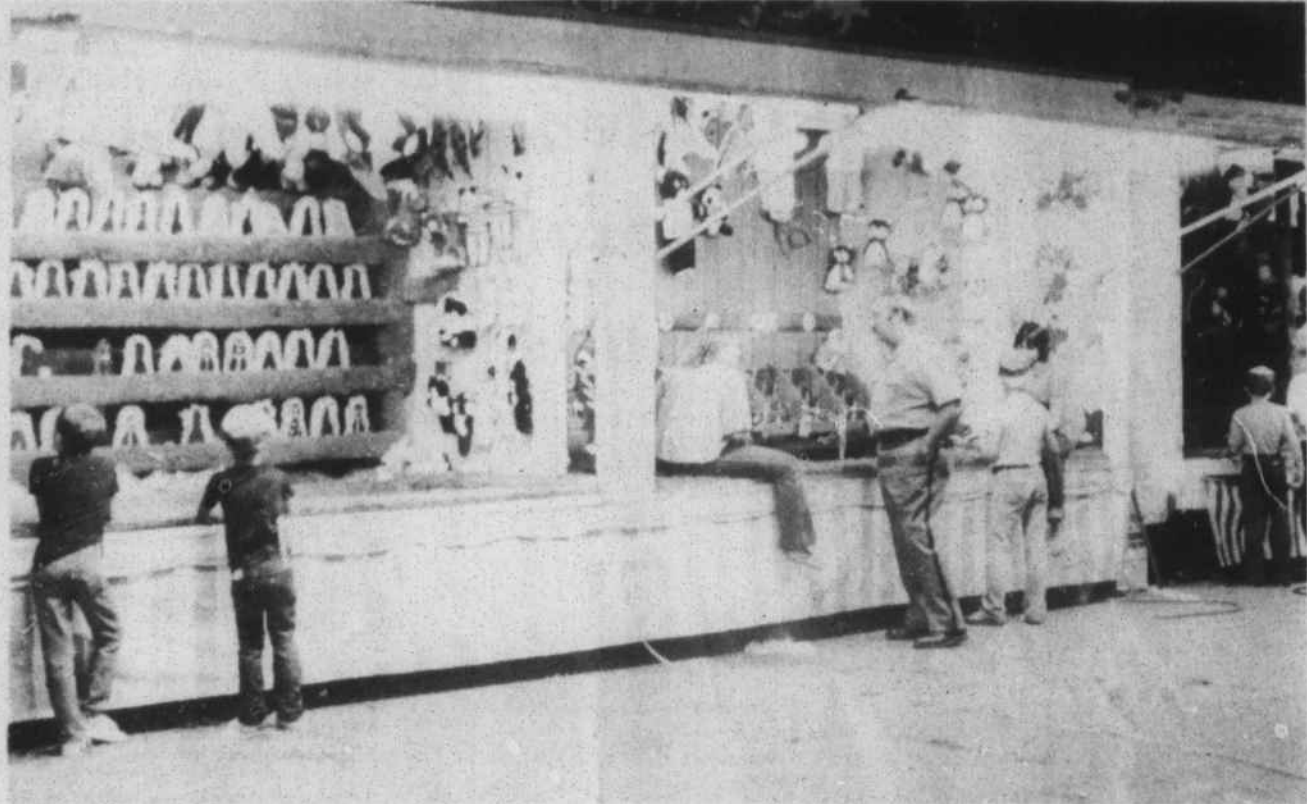
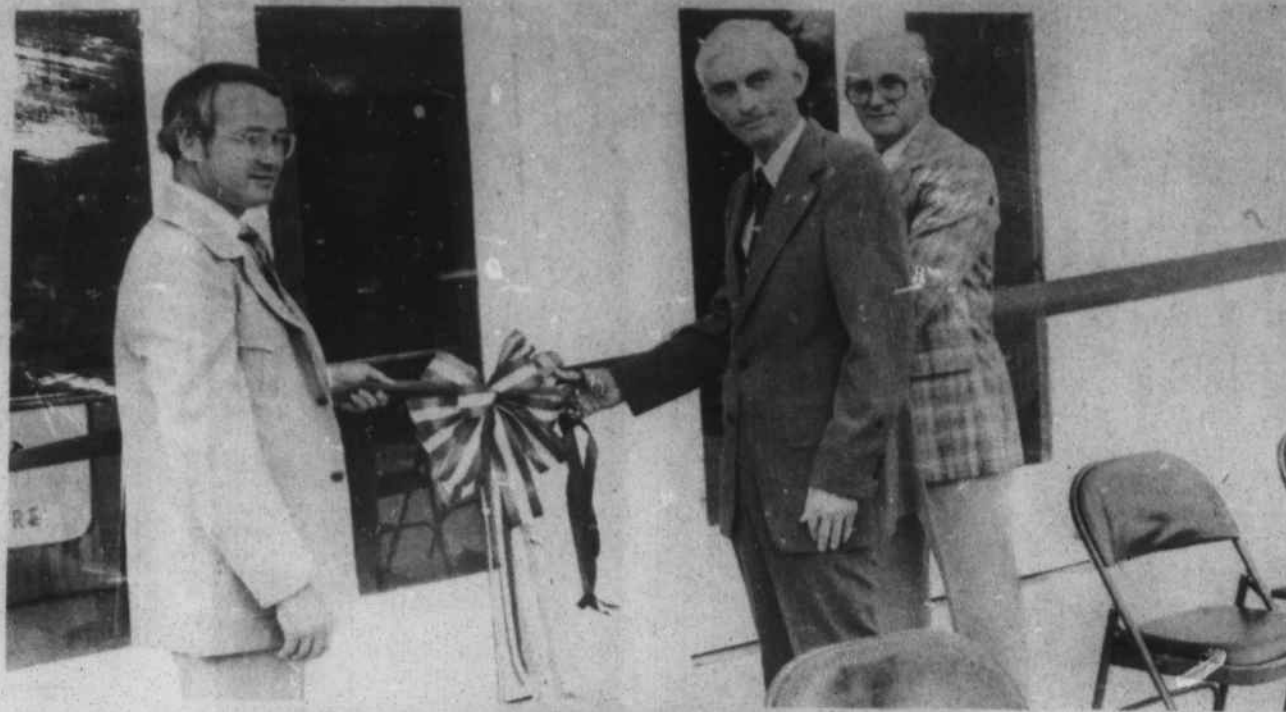


**1982
Duplin
Agri-
Business
Fair
Highlights**



**Hospital To
Increase Rates
This Weekend**

Duplin General Hospital in Kenansville will increase its room rates Saturday, according to Administrator Richard Harrell.

Semi-private room rates will increase from \$103 to \$123 per day. The coronary care rate will increase from \$250 to \$300 per day. Private rooms that were \$110 will increase to \$127 and rooms that were \$113 will increase to \$130 per day. Corner room rates will increase from \$118 to \$136 per day.

Rates in the four-bed wards will increase from \$96 to \$115 per day.

Rates for rooms in the psychiatry section will increase from \$115 to \$133 per day.

The room rate makes up less than half of the average hospital bill, Harrell said.

Last week, the hospital's board of trustees again discussed the problem of Duplin County physicians who send

patients to hospitals outside the county.

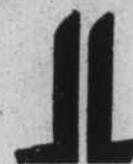
One of Duplin General Hospital's major problems recently has been the low percentage of residents who use the local institution.

Dr. Jeffrey Margolis of Goshen Medical Center in Faison recently asked to be placed on the inactive list of the hospital's medical staff. Margolis said he was beginning to practice in Sampson Memorial Hospital at Clinton because of a lack of physicians in the county to provide an exchange of time-off periods.

His action occurred after a physician left the Plain View Health Services clinic at Greenevers.

Dr. Kenneth Lee has begun practicing at the Plain View clinic but he and Dr. Margolis are still referring patients to the Sampson hospital, Harrell reported.

Stay With.....



GREAT AMERICAN INSURANCE COMPANIES

**Aubrey Cavenaugh
Agency**

*in Warsaw is now your
Great American Agent*

*Come by our office at 107 N. Front Street or
call 293-4424 for all your insurance needs.*

**Why Would A Bank Put
So Much Value On Something
Money Can't Buy?**



No one is surprised these days when a bank touts the quality of its services or announces with pride the addition of another zero in its assets column.

And certainly, these things are important. It's just that, at BB&T, we view them from a somewhat different perspective. Because, what we value above all else is something quite different. We place a premium on attitude.

Attitude shows up on the balance sheet only indirectly. But we venture to say that you'll notice the difference it makes when you enter any one of our branches.

You'll find, for example, that instead of merely providing a service, we're interested in the full range of your long-term financial plans and needs.

We believe that our commitment to long-term thinking gives us superior insight. And that this insight gives us the ability to understand the need and value of integrated financial solutions for our customers.

Responsiveness is another BB&T attribute. We're committed to responding to any request for our services in the absolute minimum amount of time.

Ultimately, you'll also discover that BB&T delivers the highest quality financial services across the board.

Quality. Commitment. Performance. For the things that mean more than just money, come to the place that's more than a bank.

BB&T
It's More Than A Bank.
It's An Attitude.

**PEPPERELL
CARPETS**

Our 30th
Year

- Direct from the Mill Prices
- We Carry Our Own Accounts
- No Waiting
- Over 300 Rolls of Vinyl & Carpet in Stock
- Our Own Professional Installation
- Lowest Prices

We're Bigger Than We Look Displaying 28,000 Sq. Ft. of Furniture & Carpet in a 14,000 Sq. Ft. Store.

"One of the best things we have is our price."

FREDERICK
FURNITURE
COMPANY

HWY. 117 - ROSE HILL
PHONE 289-3448