

# THE PINK HILL REVIEW

"Serving Pink Hill, Deep Run, Albertson, Beulaville, And Their Surrounding Areas"

OL. 6 NO. 4

KENANSVILLE, NC 28349

JANUARY 26, 1984

## Hardison Files

### Re-election To Senate

The filing time has come again for election of representatives to the General Assembly of North Carolina, especially for Senator from the Fifth Senatorial District, now composed of a part of Pender County in addition to all of Duplin, Jones and Lenoir counties. Having served one term in the North Carolina House of Representatives (to which I was elected in 1970), I am now completing my sixth term in the State Senate.

Therefore, it has been my privilege to serve the people of our District during all of that period of time, and I have always tried to honor that privilege by working diligently at all times to represent and benefit all of the people of our district and of our State. For some years now, I have been further honored with appointments to several important Senatorial Committees and Legislative Commissions. Many of these meet throughout the year when the Legislature is not in session. For example, I have been and am now chairman of the Senate Appropriations Committee and also a member of the State

Advisory Budget Commission. However, every year the time necessary to fulfill these duties continues to increase as our society, economy and way of life all become more complex, not to mention the continued increase in our population.

Nevertheless, my service on all these committees, commissions and boards helps me to better serve the people of our district. Accordingly, experienced, effective and diligent representation of our people becomes more important each year. It is my sincere belief that I can continue to effectively fulfill these duties. I have been asked to seek higher office, but after careful consideration and consulting with many of my friends in this area, it is my honest opinion that I can better serve the people of this district by remaining the Senator from the Fifth Senatorial District.

Therefore, I wish to announce that again I will be a Democratic candidate in the 1984 elections for Senator from that district and again pledge to continue to give my very best to that office. I will



Senator Harold Hardison

be proud to serve again as Senator, and again I respectfully and sincerely seek the active support and the votes of all the people in our district, and again I thank them for all the support and confidence they have always given me.

Harold W. Hardison  
P.O. Box 128  
Deep Run, NC 28525

### Goodman Announced For Re-election



District Court Judge Rodney B. Goodman announce he will file for re-election in the Eighth Judicial District. He was elected to the bench in 1980 and is currently completing his first term.

Goodman, a 38-year-old native of Kinston, graduated from UNC-Chapel Hill in 1967 and received his law degree in 1972 from Wake Forest University. He served in the U.S. Army and obtained the rank of sergeant.

"It has been a privilege for me to serve the people of this district as one of their judges, and I would greatly appreciate the opportunity to continue in this capacity," Goodman said.

#### WITH THANKS TO FRIENDS

Friends are wonderful gifts of love. I would like to thank each of you for your outpouring of kindness to our family during my recent hospitalization in Wayne Memorial and Pitt County Memorial Hospital. We are indeed blessed to have such caring friends.

Hazel W. Wallace



**LEUKEMIA BIKE-A-THON** - Recently 17 bike riders participated in the Leukemia Bike-a-thon. Those riding were David Whitfield and Valeria Newborn from B. F. Grady; Brett McLaurin, Robbie Pittman, Steve Whaley and Jonathan Stroud from Woodington; Glenn Murphy, Johnnie McIver, Deran Stroud, Douglas Lassiter, Milton Jones, Norman Rich Jr., Patrice Hill, Michael Bryant and Ann Whaley from Pink Hill Elementary. Also riding were two adults, Mrs. Rose Whaley and Mrs. Lou Ann Murphy (riding Joseph Earl Murphy). Most everyone rode 20 miles. The total collected was \$536.61 with Ann Whaley collecting the most - \$329.00 from 130 sponsors! She received a trophy plus a Leukemia T-shirt and gym bag. Glenn Murphy was the 1st runner-up, collecting \$80 from 14 sponsors. He received a trophy plus a T-shirt and

gym bag. The one who had the most sponsors other than the winner was Deran Stroud who had 19 sponsors and collected \$52. Deran received a plaque and a gym bag. Michael Bryant received a Leukemia T-shirt for collecting \$25. The co-chairman Ginny Maxwell, Linda Westbrook, Mary Ann Byrd, Pat Turner and Pam McLaurin wish to belatedly thank all the enthusiastic riders for their efforts in raising money for the Leukemia Society. A special thanks goes to Norman Rich for following the riders with his truck. Thanks also to Charlie's Grocery for donating the ice; IGA for the Pepsis and Teachey's for cookies. Thank you also to the many people who contributed money to the Leukemia Society for use in research projects and financial assistance to leukemia patients.

## Al-Anon Family Groups

More and more, clergy and lay people are recognizing that alcoholism is not a simple issue; it is a disease; a family disease spiritually, mentally and physically affecting not only the alcoholic but the entire family.

Al-Anon has one purpose: to help families and friends of alcoholics. This is achieved by offering them comfort, hope and friendship with the opportunity to grow spiritually.

Al-Anon is an established

#### LEWIS FAMILY COMING

The Christian Chapel Church is sponsoring the Lewis Family on Sunday, Feb. 19 at 2:30 p.m. at the Pink Hill School gym. For advance tickets, call 568-3978.

#### WHITLEY MOBILE OFFICE TO VISIT DUPLIN

Congressman Charlie Whitley's Third District mobile office will visit Duplin County on Tuesday, Jan. 31. Rodney Knowles, field representative, will be manning the office and available to persons having matters that they wish brought to Whitley's attention.

The mobile office will be in Chinquapin from 9:30 until 10:30 a.m. at the Post Office, at Rose Hill from 11 until 12 noon, also at the Post office, and at Warsaw from 12:30 p.m. until 1:30 p.m. at the Post office.

## Lenoir School Menus

### Week of January 30

Monday - spaghetti with meat sauce or chili burger, corn or tossed salad, apple sauce or fruit cocktail, rolls, gingerbread

Tuesday - grilled cheese or peanut butter sandwich, beef-vegetable soup, fresh fruit, crackers, cookies

Wednesday - fried or barbecued chicken, potato salad or broccoli, pineapple or carrot & raisin salad, rolls

Thursday - Manager's choice

Friday - fish fillet or barbecue, slaw or french fries,

peaches or pears, hushpuppies, lemon pudding.

Milk is offered with all meals. Each school offers a variety of extra items for sale.

### FISH-CHICKEN STEW

The Young Adult Sunday school class of Christian Chapel Free Will Baptist Church will sponsor a chicken stew and fish stew supper Saturday night, Jan. 28 at 6 p.m. Everyone is welcome. A small donation will be required.

## Local Girl Beauty Contestant



on Saturday, Jan. 28 at the Holiday Inn in Kinston.

Ellen will compete in the modeling, talent and beauty divisions. There are three separate divisions in which a contestant may win. The different age groups for the beauty pageant include Pee Wee (girls) 2-5, Little Miss 6-10, Master (boys) 3-9, Pre-Teen (girls) 11-13, Teen (14-17) and Miss (girls) 18-27.

Miss Riggleman is a 1983 graduate of Talladega High School, a contestant in the Pink Hill Miss Liberty contest, Miss Sweetheart in Talladega, and attended South Lenoir where she was chief cheerleader and was crowned Miss Vica.

Ellen loves poetry, dancing and art. She is employed part-time at the Beulaville Dance Academy. She wishes to thank all her sponsors who sponsored her in the pageant.

## Red Carpet

### Nights Of Theatre

The third annual "Red Carpet Nights of Theatre" will be presented at the Kinston Airport Theatre on Jan. 27 and 28 at 8:15 p.m. In co-sponsorship with the Kinston-Lenoir Community Theatre, the Community Council for the Arts (the Arts Council) announces the two-night performances by Roadside Theatre, "South of the Mountain."

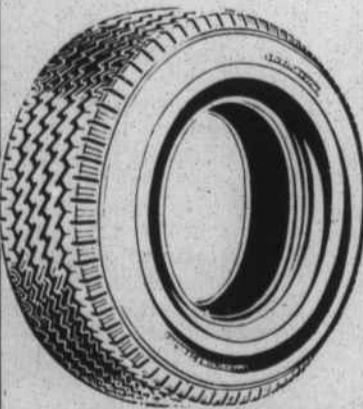
"South of the Mountain" is the story of two generations of a mountain family and the personal changes brought to their lives as industrialization and a modern way of life move into the mountains. A dramatic musical with 12 original songs, accompanied by guitar, banjo and fiddle, "South of the Mountain" dips deep into the rich reservoir of folk memory and brings big-city provincials a breath of authentic Americana.

The cast of Whitesburg, Kentucky's Roadside Theatre offer to their audiences a form of drama that has been around since Homer, a narrative form that entertains while it informs. What emerges is a portrayal of Americans in a locale, Appalachia, that is more rich and immediate than one is likely to read in any social history.

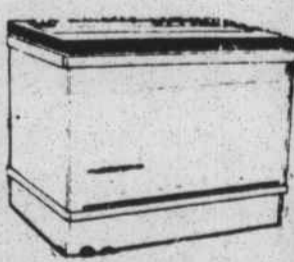
Both the Arts Council and the Community Council for the Arts suggest buying your tickets early as the last two years' performances have been a total sell out. "South of the Mountain" will truly represent two splendid evenings of family entertainment with all the thrills of

a Broadway atmosphere. For ticket information, call the Art Center, 527-2517.

## ODELL HILL FARM SUPPLY, INC.



'Top Quality' SafeMark Products



From Your Farm Bureau Service Center



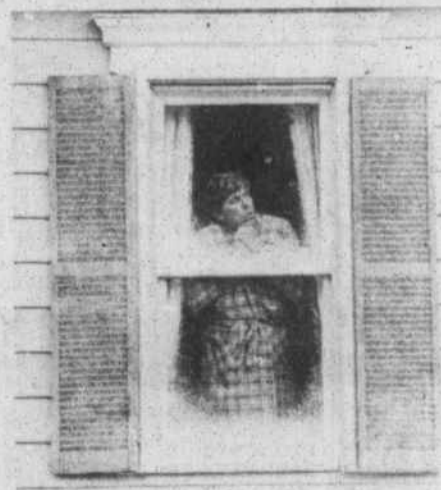
Attention Mr. Farmer!!!

Plantbed Materials And Custom Application -Now Available-

568-4410

Located 1 Mile South Of Deep Run On Hwy. 11

# HOW YOU CAN STOP YOUR HEATING DOLLARS FROM GOING OUT THE WINDOW.



Up to 16% of the heating you pay for could be going out your windows and doors because of surfaces exposed to the weather.

So, if you're searching for a way to save energy, installing storm windows and doors is worth considering. And, if you need to borrow the money, so is a trip to Carolina Power & Light.

We'll loan you up to \$600 at just 6% interest for attic or floor insulation, for storm windows and doors, or for other energy improvements.

Improvements that can help make any home more energy efficient from top to bottom.

For more details, call CP&L. We can help shut the door, and windows, on wasted energy.

## CP&L 6% HOME ENERGY LOANS.

To qualify you must be a CP&L residential customer with electric heat or whole-house cooling

"The Best Family Feast Down East"

Jackson Cross-Roads **KINGS** OPEN 10:00-9:00 Mon.-Sun.

FRIDAY SATURDAY AND SUNDAY

Special Available Only At Kings Take Out No. 2 Jackson Cross-Roads

Kinston

Full Service Grill

Jackson Cross-Roads **KINGS** OPEN 10:00-9:00 Mon.-Sun.