

GOOD PLAN TO PREVENT MOTHS FROM GETTING INTO GARMENTS



Girls Brushing and Sunning Clothes Before Storing.

The United States Department of Agriculture has issued a bulletin which sets forth the cardinal principles for preventing the tragedy of moth damage to clothing. The bulletin states that the most effective method of preventing moth damage is to brush and sun all woolen and fur garments before storing them away during the winter. The weather should be painstakingly selected for sunning, and the clothes should be hung on a clothesline, to receive the full benefit of the sun's rays. It is also possible to kill any moth eggs or larvae which may already be in them, says the United States Department of Agriculture. Special attention should be given to brushing all seams, creases and pockets.

Young Larvae Do Damage.

The adult moths which fly about do little damage to the clothing. They merely select woolen garments or furs in which to deposit their eggs, so that the young larvae eventually emerging from these eggs will have plenty of food. A large part of the damage caused by moths can be averted by this preliminary cleaning, brushing and sunning is thoroughly done, and if the clothes are then placed in absolutely tight containers which cannot later be entered by other moths.

POISONING FLIES BY USING FORMALDEHYDE

Addition of Sugar Will Add to Its Effectiveness.

Probably the best poisoned bait for house flies, according to the United States Department of Agriculture, is formaldehyde in milk used at the rate of about three teaspoonfuls of formaldehyde to a pint of a mixture of equal parts of milk and water. This is placed in flat dishes in places frequented by flies. A piece of bread or a sponge in the dish adds to the effectiveness. Brown sugar or molasses and water with 2 1/4 per cent formaldehyde (commercial, 40 per cent solution) added will probably also give satisfactory results. As far as possible other liquids should be removed when poisoned baits are exposed.

The use of poisoned solutions, especially arsenical solution in tubs containing portions of animal carcasses, has been tried and advocated against the screw-worm by a number of stockmen. A comparatively weak poison solution—about one gallon of dip, as used for cattle, diluted to seven gallons of water—is sufficient. Best results usually have been secured where a considerable portion of the animal matter was allowed to protrude from the poison solution, as there is a tendency for the solution to harden the bait and prevent its decomposition, thus reducing its attraction for flies.

It should be borne in mind that formaldehyde, 40 per cent, is poison when in the same proportion as wood alcohol, if taken internally. It should not be inhaled, nor should the eyes be exposed to it. Special pains should be taken to prevent children from drinking poisoned baits and to prevent the poisoned flies from dropping into foods or drinks. Arsenical solutions, as is well known, are extremely poisonous to man and animals. Care should be taken to protect the poisoned baits from live stock, and it is not advisable to have the baits close to barnyards where fowls are kept, as they may be poisoned by eating the dead flies.

HAVE OLD CARPETS REWOVEN

Old Material May Be Converted Into Durable Rugs—Should Be Thoroughly Cleaned.

New rugs may be woven from old worn carpets and rugs too shabby to be used as they are, points out the United States Department of Agriculture. The process for doing the work may be found in many localities. The old material is cut into strips about three-eighths of an inch wide, which are woven together and twisted making a carpet that like chenille and form the fringe of the new rug. Cotton string is used for the warp. Those strips are very heavy and soft, alike on both sides, and durable, provided they are cleaned carefully. They are generally rather neutral in color and without a definite design; borders, however, may be woven from strips of carpet of solid color, or figured carpet may be used for this purpose. In general, about six and a half pounds of old carpet is required to make a square yard of the rewoven fabric, depending, of course, on the weight of the old material.

When one does not possess a cedar chest, a tightly constructed chest of ordinary wood would be just as effective, provided the clothing is as thoroughly cleaned, brushed and sunned and has from one to two pounds of good-grade naphthalene packed with it. Woolen garments similarly cared for and prepared for storage may be protected by wrapping them tightly in several thicknesses of ordinary paper, with naphthalene flakes or balls distributed throughout the package.

Wood Chest Effective.

When one does not possess a cedar chest, a tightly constructed chest of ordinary wood would be just as effective, provided the clothing is as thoroughly cleaned, brushed and sunned and has from one to two pounds of good-grade naphthalene packed with it. Woolen garments similarly cared for and prepared for storage may be protected by wrapping them tightly in several thicknesses of ordinary paper, with naphthalene flakes or balls distributed throughout the package.

TAKE CARE OF PERISHABLES

During Warm Summer Months Keep Vegetables and Fruits at Cool Temperature.

Fresh vegetables and fruits should be kept clean, well ventilated, and, if possible, at a temperature between 60 degrees and 40 degrees F., advises the United States Department of Agriculture. "Decayed ones should be frequently sorted out. Very often the decayed portion may be cut away and the rest of the fruit or vegetable used at once. Wilted leaf vegetables sometimes may be freshened by soaking in water just before using. All vegetables and fruits, especially those to be eaten raw, should be thoroughly washed in running water before they are used. The loss of flavor and texture is very slight and is made up for by the removal of bacteria and possible spray residue. Decaying fruits and vegetables always attract flies.

Most cooked foods made with milk, eggs, meats, or fish, are excellent breeding places for harmful microorganisms, including many which cause poisoning. Chilled leftovers should be used as soon as possible. Leftovers of meat pie, dishes made with cream sauce, soft custard, boiled dressing, and dressing made with cream must be carefully kept and handled and promptly used. They often cause serious poisoning before they taste or smell spoiled. Boiled rice, hominy and other cereals also spoil quickly.

TEA IS ALWAYS REFRESHING

Bring Freshly Drawn Water to Boil and Then Pour on Requisite Amount of Leaves.

To make a pot of perfect tea, an expert in the United States Department of Agriculture directs one to bring freshly drawn water to a boil; pour it on the requisite amount of tea (one even teaspoonful for each cup) in a previously scalded pot, allow it to remain covered for three minutes; then decant or strain into another receptacle. The spent leaves should never be used again.

When one intends to serve iced tea on warm afternoons a supply of tea brewed and strained earlier in the day is advisable. When the tea is cool it should be placed next to the ice to chill. Cracked ice added just as the glass is served will not dilute it appreciably. Sugar and a slice of lemon may be used according to individual taste.

OF INTEREST TO THE HOUSEWIFE

Orange peeling gives an excellent flavor to peach jam.

Green grape jam is an excellent accompaniment to meat.

Potatoes are delicious when boiled and browned in butter.

The meat dressing will never be heavy if you add a liberal pinch of baking powder when mixing it.

The spout of a coffee pot may be cleaned with a man's pipe cleaner. Bend one end into a loop and every corner will be reached.

In Gay, Sheer Party Frocks; Inexpensive Jewelry Allowed

THE making of party frocks for the little miss is more of a pleasure than a task. No one need go beyond a list of a half-dozen materials to make a choice, and the most popular and engaging ones can be counted on the fingers of one hand—in silks they are crepe de chine, taffeta or georgette, and in cottons, voile, organdie, batiste, swiss, net and lace.

Nearly all of these fabrics are shown in a variety of flower-like colors, in which pink, maize, blue, lavender and green appear in many light tones. Net and batiste, either plain or embroidered, and lace appear in white

and lavalieres add just the proper touch to the costumes now in vogue, perhaps because of the recently awakened interest in the jewelry of ancient Egypt, and perhaps because manufacturers have brought out so many smart new designs in these pretty trinkets—the mode countenances inexpensive jewelry.

In any event there is no denying that beads of glass, wood and composition, earrings of onyx, jade, crystal and ivory, and ornaments of various compositions in brilliant colors are increasing in popularity, and what is for more interesting, they are being

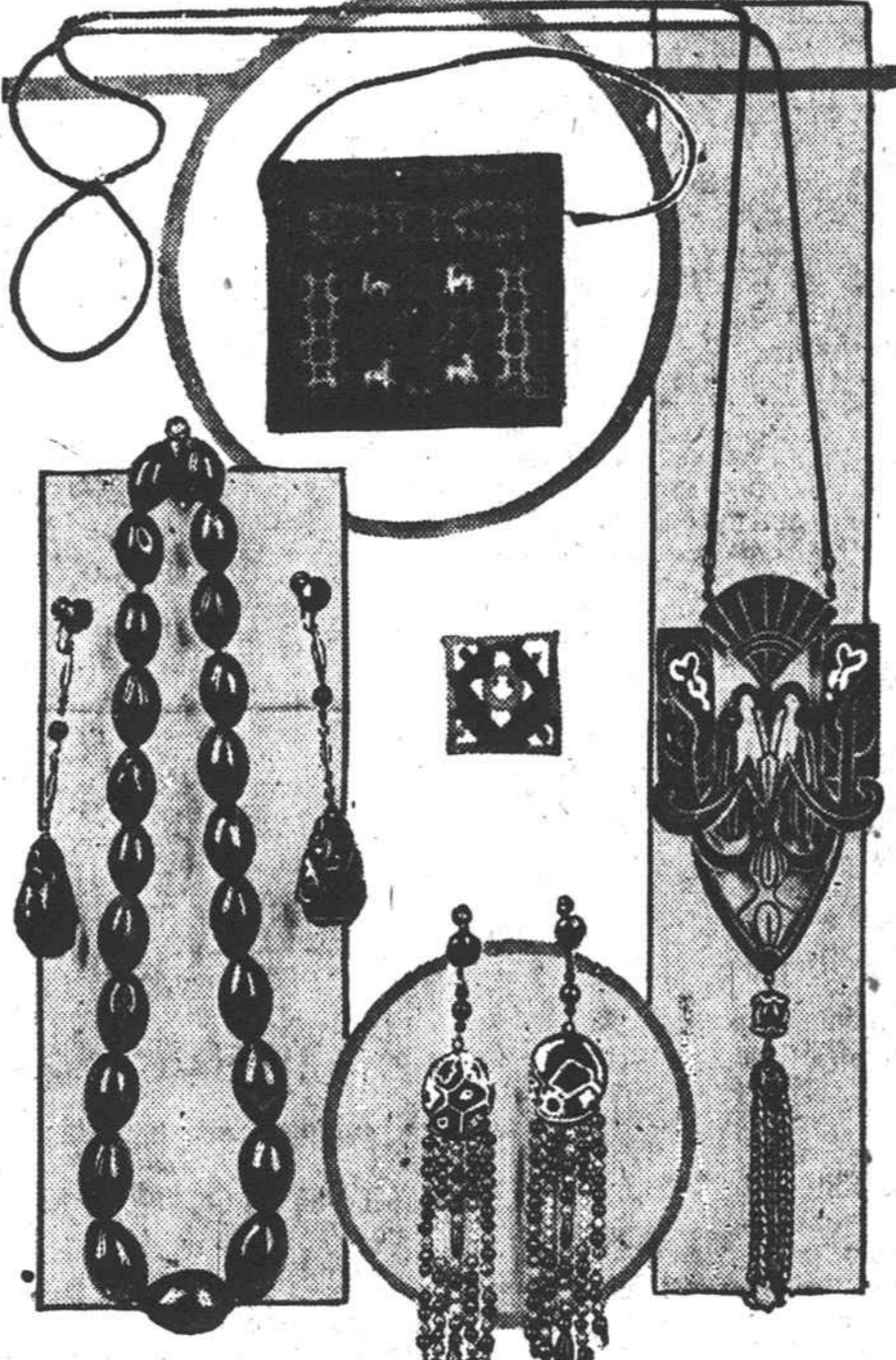


A PRETTY PARTY FROCK

or cream color, usually worn over a colored silk slip, but sometimes ribbon trimmings or a sash provide the only color touch on these sheer frocks. Many of them have a scalloped hem line, edged with narrow lace, and laced-edged tucks make a fine decoration on dresses of transparent fabrics. Lace flouncing, in simple designs, is occasionally used, and needs nothing in the way of trimming or embellishment except a little ribbon, in girdles or bows. A pretty frock of this kind appears in the picture, made of cream-colored lace and worn over a soft pink slip. There are ties of pink ribbon on the

worn by women of unquestionable standing and taste. The fad is here and will probably continue through the fall because of the promised vogue of rich embroideries and high colors in costumes for dress wear.

In the illustration above the bead and earring set is made of a composition in brilliant holly-berry red. The earrings in the center are of jet and pearl and are worn with charming effect either with an all-white or black-and-white costume. At the right is a lavaliere of galalith, modeled and colored from a pure Egyptian pattern. It provides a pleasing adjunct to the



THE LATEST IN JEWELRY

shoulders. The little lady is very much dressed up and may be on her way to the dancing class or a birthday party, where one must honor the occasion with her very best clothes.

Pretty frocks of crisp-taffeta, sleeveless and with wide berths of organdie, have their sashes made of taffeta in the color of the dress and lined with a contrasting shade or color. They are quite wide and long, with full loops. Most frocks have very short sleeves and these make opportunity for cuffs matching the collar. Crepe de chine is often collared with lace-trimmed georgette.

Perhaps because more women are finding out the new beads, ear-

simple costumes favored for summer. A great deal of care must be exercised in choosing jewelry of this character if it is to be worn with the best effect. Color is most important and unbecoming shades should be avoided as carefully as they are in hats and costumes. Jade earrings, for instance, can hardly be expected to add charm to a naturally sallow complexion, and a lavaliere that clashes with the color of the costume detracts rather than adds to the effectiveness of the ensemble.

Julius Bottomley
© 1923, Western Newspaper Union.

RECEIVED GREAT BENEFITS PE-RU-NA FROM THE USE OF



Mr. J. O. Sexton, R. F. D. No. 2, Grassy Creek, North Carolina: "I have used Pe-ru-na for the last two years and received great benefits from it. Pe-ru-na is fine for colds, grip and flu. I can recommend it most highly."

For coughs, colds, catarrh, the results of grip and Spanish Flu, stomach and bowel disorders and all other Catarrhal diseases, PE-RU-NA is recommended by a half century of usefulness.

TABLETS OR LIQUID SOLD EVERYWHERE

Often the Way. "Everybody tries to kiss that girl." "She doesn't seem so attractive. Why?" "She won't let you."—Louisville Courier-Journal.

A FEELING OF SECURITY

You naturally feel secure when you know that the medicine you are about to take is absolutely pure and contains no harmful or habit producing drugs.

Such a medicine is Dr. Kilmer's Swamp-Root, kidney, liver and bladder remedy.

The same standard of purity, strength and excellence is maintained in every bottle of Swamp-Root.

It is scientifically compounded from vegetable herbs.

It is not a stimulant and is taken in teaspoonful doses.

It is not recommended for everything.

It is nature's great helper in relieving and overcoming kidney, liver and bladder troubles.

A sworn statement of purity is with every bottle of Dr. Kilmer's Swamp-Root.

If you need a medicine, you should have the best. On sale at all drug stores in bottles of two sizes, medium and large.

However, if you wish first to try this great preparation send ten cents to Dr. Kilmer & Co., Binghamton, N. Y., for a sample bottle. When writing be sure and mention this paper.—Advertisement.

Georgian Never Heard of Ty Cobb. That "a prophet is not without honor or save in his own country." was brought to mind in Judge William H. Heston's court when Mrs. Robert Walker, negress, witness for her husband, who was charged with larceny, declared that although she came from Georgia she had never even heard of Ty Cobb until she came to Detroit.—Detroit News.

CHILDREN CRY FOR "CASTORIA"

Especially Prepared for Infants and Children of All Ages

Mother! Fletcher's Castoria has been in use for over 30 years to relieve babies and children of Constipation, Flatulency, Wind Colic and Diarrhea; allaying Feverishness arising therefrom, and, by regulating the Stomach and Bowels, aids the assimilation of Food; giving natural sleep without opiates. The genuine bears signature

Chas. H. Fletcher.

Too Expensive. "Does your wife object to your smoking?" "Yes," she says we can't both afford to do it."

Instant relief from CORNS without risk of infection



Safely! You can end the pain of corns, in one minute. Dr. Scholl's Zino-pads will do it, for they remove the cause—friction—pressure, and heal the irritation. Thus you avoid infection from cutting your corns or using corrosive acids. This antiseptic, waterproof. Sizes for corns, calluses, bunions. Get a box today at your druggist's or shoe dealer's.

Dr. Scholl's Zino-pads

Made in the laboratories of The Scholl Mfg. Co., makers of Dr. Scholl's Foot Comfort Appliances, Arch Supports, etc.

Put one on—the pain is gone!

ABSORBINE

will reduce inflamed, swollen Joints, Sprains, Bruises, Soft Bunches; Heals Blisters, Foll Eryl, Quittor, Fistula and Infected Sores quickly as it is a positive antiseptic and germicide. Pleasant to use; does not blister or remove the hair, and you can work the horse. \$2.50 per bottle delivered. Book 7 A free.

W. F. YOUNG, Inc., 310 Temple St., Springfield, Mass.

GREEN MOUNTAIN ASTHMA COMPOUND

quickly relieves the distressing paroxysms. Used for 25 years and result of long experience in treatment of throat and lung diseases by Dr. J. H. Guild. FREE TRIAL BOX. Treatise on Asthma, its causes, treatment, etc., sent upon request. 25c. and \$1.00 at druggists. J. H. GUILD CO., RUPERT, VT.

Census of Greenland. The population of Greenland, according to an official census completed by the Danish government, the results of which have just been made known, consisted of 274 Europeans, practically all Danes, and 14,081 natives, states the American consul at Copenhagen in a report to the Department of Commerce. The natives number 6,729 men and 7,352 women.

Idleness is emptiness; the tree in which the sap is stagnant remains fruitless.—Ballou.

The Quality Car

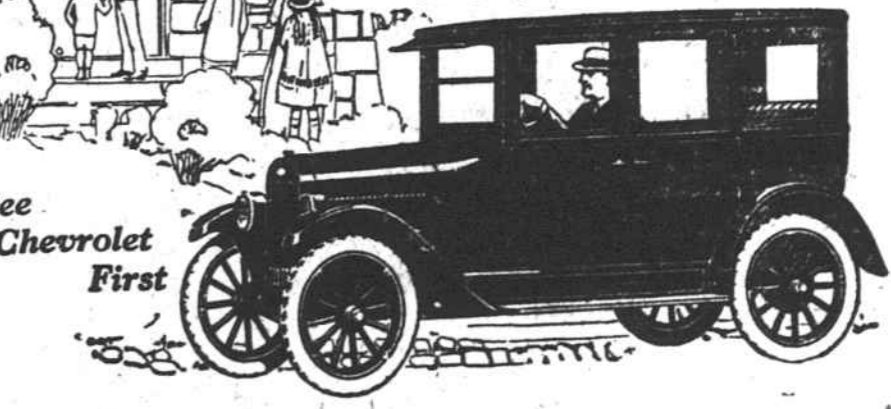
Not alone for every-day utility does Chevrolet represent the world's lowest-priced quality car. It also meets the requirements of particular people for those social and sport occasions when artistic proportion, high-grade coach work, and handsome finish are in harmony with the time and place.

You can be proud of your Chevrolet, combining, as it does, a high degree of engineering efficiency with modern quality features that appeal to the experienced and the discriminating.

Call at our showrooms and discover the astonishing values made possible by the exceptional volume of Chevrolet sales.

Prices f. o. b. Flint, Michigan

SUPERIOR Roadster	\$510
SUPERIOR Touring	525
SUPERIOR Utility Coupe	600
SUPERIOR Sedan	650
SUPERIOR Sedan	869
SUPERIOR Commercial Chassis	425
SUPERIOR Light Delivery	510
Utility Express Truck Chassis	575



CHEVROLET MOTOR CO. Division General Motors Corporation Detroit, Michigan