

**POLK COUNTY NEWS**

C. BUSH, Publisher  
H. M. FRASER, Editor  
Phone 99.

Published every Thursday at  
Tryon, North Carolina

Advertising Representative  
THE PRESS ASSOCIATION

The farmers of neighboring counties have realized the importance of cooperative marketing of farm produce in car loads lots.

The Polk County Farmers Federation has within the past two weeks secured the services of P. C. Squires, a man who comes to our farmers federation with highest recommendations from other similar organizations which he has been largely instrumental in making successful. The farmers of this county will be given an opportunity to make Polk County one of the truck producing counties of North Carolina.

The farmers of Henderson county, our neighbors have recently awakened to the value of cooperative farming with the result that a new federation warehouse will soon be erected in Hendersonville.

"The salvation of the farmer" states the Hendersonville News, "must come through profitable markets for his produce rather than through credits and his capacity to borrow from the banks because when he borrows a pay day must come. Abundant crops and starvation prices are not the back ground of our economic welfare. The farmers' wealth must come through profits on his productions. He has often sold at a loss because of lack of unity that resulted in an unorganized marketing system.

The federation of Fletcher and Buncombe, of which the local federation would be a unit, has clearly demonstrated the value of cooperative marketing in West North Carolina. The federation is now unable to supply the demand in car load lots. It is in touch with the big markets but can supply them only in a limited way. A larger field to draw from will enable it to fill its full mission of usefulness to the farmer. Its operations thus far have helped to move the surplus from the usually glutted local markets and as a consequence a brighter day has already dawned upon the farmers of Henderson and Buncombe. The opportunities for more profitable farm operations will increase in proportion to the support given the federation."

**SEND IN THE NEWS**

Suggestions To Correspondents  
About Writing News Items

The Polk County News is the only newspaper published and circulating in any community in Polk County.

Contributions of news items from any section of this territory are welcomed.

Anything of interest to any number of people in this territory is sufficient to be written and printed.

Typewritten letters are preferred. If this is not possible, then write plainly. Use plenty of paper.

Always begin letters by dating thus: Tryon Oct. 10.

Correspondents should bear in mind five important points WHO, WHAT, WHEN, WHERE and HOW.

That is, tell WHO it's about, WHEN, WHERE AND HOW it happened.

Tell those five things first and briefly, then enlarge as may be necessary.

Tell what's going on among your own people and your neighbors.

Birth, deaths, marriages, personals, reunions and social gatherings are good copy.

Be careful in spelling names and initials. Names are important. Mention everybody connected with the news item.

ALWAYS sign communications. Not necessarily for publication, but as an evidence of good faith. No attention paid to anonymous, unsigned communications.

**Magic Word.**

A Whittier mother was teaching her little son to say Amen at the end of his prayers, and the child suddenly asked: "Mother, what does Amen mean?" "Amen means the end, my dear," the mother explained. A few days later the little one was disobedient and the mother gave him a severe lecture. She felt he ought to have a whipping and talked on and on, to nerve herself for the ordeal of administering the spanking. Imagine her surprise when suddenly the child began crying "Amen, mother, Amen."

**The Adventure of Work.**

We are in grave danger in these days of dividing life into two utterly unrelated portions, and the true function of play as something that is essentially creative and life-renewing in the fullest sense is being forgotten. The best work must ever have in it the spirit of play; that is, the spirit of adventure. Great work, as another writer has said, is play itself.—Cape Argus.

**Farm Federation**

**News and Reviews**

By P. S. Squires'

**CHILDREN LETTUCE CLUB**

Motoring down the mountain side with Mr. J. R. Sams the other day after a bountiful dinner at the hospitable home of Mr. McMurray, the idea occurred to the writer that children should have a part in the Iceberg lettuce campaign now under way, and a suggestion that a Childrens Iceberg lettuce club be organized, met with instant response from Mr. Sams who offered to head a prize list with five dollars. His co-worker, the manager could do no less, and the matter had only to be mentioned to Mr. Jackson, when this enterprising business man of Tryon dug down in his pocket for the third five dollar bank note offered as prize money. Fifteen dollars was subscribed with no effort and no doubt this publicity will bring other liberal response.

Rules governing this contest will be published in an early issue of the News.

Looking over the current number of a New York Produce trade paper the manager was not a bit jealous to find that his idea of a children's lettuce club was not original. I find from this paper that a car of lettuce arrived in Chicago from Colorado, Sept. 28th, and it is worthy of some attention by reason of the fact that it was grown and packed by members of the boys and girls Iceberg lettuce club of Buena Vista. The quality of the car was reported as fine and gave ample evidence of the fact that there are a lot of embryo lettuce growers that should make a name for themselves within a few years.

The Polk County children's Iceberg lettuce club may not get in shape this year to load a refrigerator car of their own growing but the manager will see that there is a market for their crop.

P. C. Squires

**Item One.**

Manager Squires spent the early part of this week investigating the lettuce market of Asheville and found to his surprise that every head of lettuce exposed for sale in both wholesale and retail stores came from Colorado. Calling on McConnell Bros. wholesale produce merchants Mr. McConnell, for the information of the manager opened up a refrigerator car of Iceberg lettuce just in from Denver Colorado.

This lettuce was packed in crates holding three and a half dozen head and is selling at seven dollars and fifty cents per crate wholesale. Mr. McConnell kindly gave the manager a few heads from this car to place on exhibition at the Polk County Fair, so that prospective lettuce growers may see what the Iceberg lettuce looks like. The price has advanced and the retail merchants will probably have to sell this lettuce at twenty five cents per head.

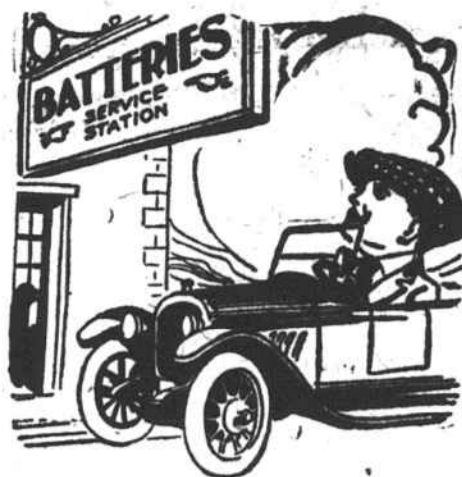
Going the round of the fancy retail stores three heads were selected of the best that could be had at a cost of twenty five cents per head.

At the County Fair Thursday a photo will be shown of eight heads, Iceberg lettuce grown in Onslow county North Carolina. These heads were grown from cast away plants and received no attention whatever. Taking root after being thrown away. At the close of the lettuce season these heads were discovered and grouped in a cold frame for the photo. The eight heads, self made Iceberg lettuce averaged two pounds and two ozs. each. The two best heads that could be found near the door of the car at McConnell Bros. store weighed one pound each and the heads that were purchased at the retail stores in Asheville averaged three quarter pounds each.

The result of this visit to Asheville should be a source of great help and encouragement to those who are about to take up this very important truck crop.

**Item Two**

The Federation Manager would like to meet every prospective Iceberg grower at the county fair on Thursday. Come prepared to state what acreage you will grow of the Iceberg. No farmer will be asked to plant a larger acreage than he can properly take care of. The largest individual acreage subscribed thus far is one acre and down to half and quarter to Iceberg if the soil and location seems suitable for this crop. Detailed information will be published, showing every feature of the work from making the seed bed and sowing the seed to the cultivation, harvesting, grading and packing, so the novice in this sort of gardening



**BATTERY SERVICE**

is what you will get here. Drive right up and have your auto battery put in perfect shape. We repair, recharge, test, rent, sell and otherwise handle auto batteries in a real service way. We specialize in this line.

**BISHOP'S GARAGE**  
Landrum, S. C.

**Venetian Grand Canal.**

The Grand canal is the name given to the principal canal and main water thoroughfare of Venice. It is nearly two miles in length, is in shape like the letter "S," and divides the city into two nearly equal parts. The "Canalazzo," as it is called in Italian, is spanned by the Rialto, and is lined with palaces which, although appearing stained and battered in the daytime, loom up grandly in the moonlight.

**LANDRUM**

Misses Julia Carroll and Aileen Pritchard were shopping in Spartanburg on Saturday.

Supt. Claude I. Truluck was elected vice-president of the County Teachers Association held in Spartanburg on Saturday.

Mr. and Mrs. J. A. Langley of Greenville S. C., spent Sunday in town with their daughter Miss Janet Langley

Mr. and Mrs. J. R. Mallory and Miss Nomie Mae were Spartanburg visitors on Saturday

Miss Julia Ray spent the past week-end with friends at Bolling Springs.

On Sunday morning the Carolina Special ran into a Ford roadster on the crossing at the Methodist Church, fortunately no one was hurt.

Miss Evelyn Lambricht who attends Greenville Womans College spent the week-end at home with her parents.

Mr. Archie Blackmon and his sister Mrs. J. V. Thompson spent last week with relatives in Kershaw.

Clifford Mallory returned this week from Erwin Tenn.

**Consolation.**

About trouble, there's this: A dead man has solved all his earthly problems.

**Varieties of Tomatoes.**

In crossing different varieties of tomatoes to obtain red fruit one parent must be red; to obtain pink tomatoes, one parent must be pink and the other pink or yellow, and to produce yellow fruit both parents must be yellow.

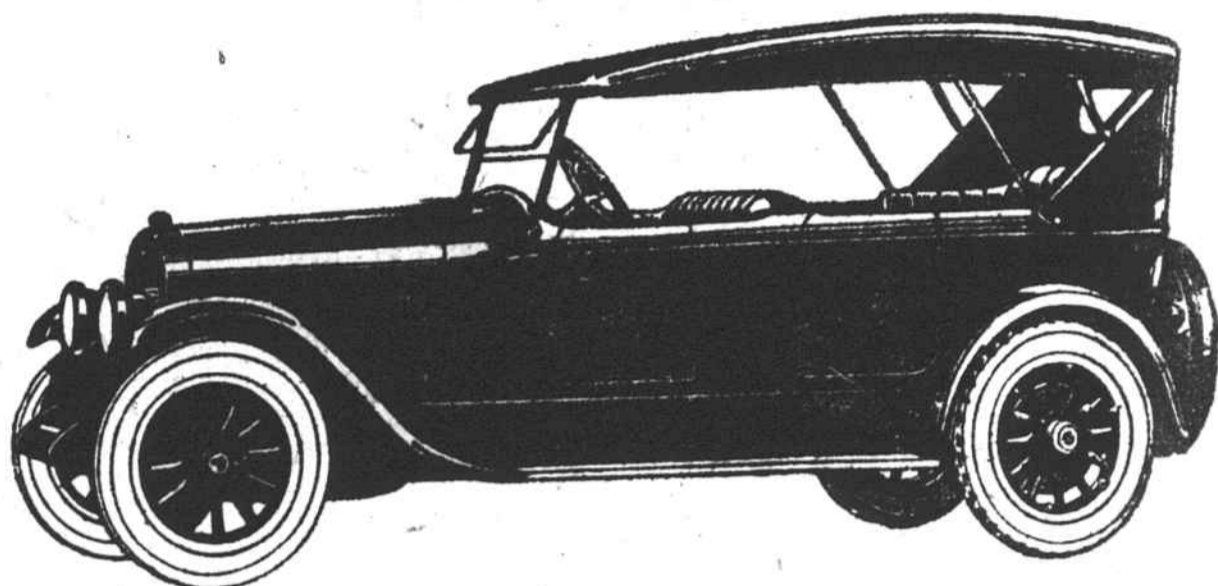
**Snow Effective Barricade.**

To test penetration of rifle shots snow walls six feet six inches thick were erected in France. Rifles were fired at a distance of 55 yards. In each case the ball was stopped at a penetration of five and a half feet.

**Dodge Brothers Motor Cars**

Longer springs in the new models assure riding comfort. The new 1924 Model Dodge will give you the utmost in service, satisfaction and savings. Telephone or write for demonstration of the 1924 Dodge Touring car.

**B. L. BALLENGER, Dealer**  
Tryon, N. C.



**LINCOLN**

Get Behind the Wheel

Driving the Lincoln brings a new sense of complete mastery of time and roads. Riding under all conditions and at any speed, is a smooth, even flight.

The Seven-Passenger Touring Car

**\$3800**

F. O. B. Detroit

Ten Body Types

300 operations accurate to one quarter thousandth of an inch; 1200 operations accurate to one half thousandth of an inch; 5000 operations accurate to one thousandth of an inch; make the Lincoln the most accurately built car in the world.

**Kilpin Motor Company, Tryon, N. C.**

**THE AUG. W. SMITH CO. SPARTANBURG, S. C.**



They are priced very moderately.  
**SEE THEM THIS WEEK.**

**AUTUMN'S NEWEST COATS**

interpret a host of style ideas.

There's the indispensable Utility Coat, inclining toward swagger stripes—The dress Coat with flared contour—Or the tube-like silhouette. Which of these will you choose?

They fashion themselves of the newest and loveliest fabrics, including:

**MARVELLA** **ARABELLA**  
**VELLONA** **CERONA**  
**ORMADALE** **FLAMINGO**

**CAMEL'S HAIR**  
**KASHA PLAIDS**  
**HONEY DEW**  
And other materials

**SMART SUITS FOR AUTUMN**

Many of the Suits now selling are trimmed in the finest of the fashionable fur trimmings—Caracul, Beaver, Mole, Fitch, Wolf and Fox. Colors include Cocoa and deep Brown shades, Black and Grey tones. These suits are of the highest type in styles and quality. Each one is a dominant value—Tailored suits without furs are also included.

**SMITH'S New Wool Frocks**

To have as chic lines in one's practical, every day frocks as in one's more formal ones is an achievement of which to be proud. The simplest Coat Dress chosen here will be ultra smart. Many of the new ones are of twill or rep, well tailored. A little less severe are Wool frocks of unbelted linen with a flare here or there. The colors are this season's newest and most popular shades.

**Silk Dresses For Every Woman**

Silk Frocks for autumn do surprise one. When their fronts are straight their backs are full and vice versa. Every Crepe dress shows its Satin side and when it is not lace-trimmed is often enlivened with a plaid of silk. These are Frocks typical of what smart women will wear for afternoons.

**Children's Fall Coats**

Soft, fleecy plaids, new Chinonillas, Sport Plaids, Bolivias and many new Coatings are featured; many Fur collars and cuffs, others plain, every girl is sure to find the Coat she is looking for and at a moderate price.

**SEND For SAMPLES**

of our goods and compare them with others. We'll be Glad to Send you samples.

**PROMPT MAIL ORDER SERVICE**

**BUTTERICK PATTERNS FOR FALL AND WINTER HAVE ARRIVED**

**REST ROOM FOR LADIES**

With maid in attendance on our second floor. Use it to your own convenience.