

CHIC AFTERNOON GOWNS; HATS OF SILVER AND GOLD

THE efforts of designers, in all manner of costumes, at present, seems to be to achieve the greatest degree of simplicity and still advance novelties in trimming and materials. The early tendency toward intricate lines and drapes has apparently been put aside in favor of the straight silhouette, the very long skirt giving way to ankle lengths or even shorter styles. Naturally, with these restrictions, the novelty of each costume must depend on its material, its color or its trimming, but there is such a variety in these that the designers do not lack

some form or other. In the group of dressy small hats shown here, each model boasts the sheen of metal.

If a hat is of velvet a most attractive trimming is gold lace, such as ornaments the hat at the top of the group. This model is of green velvet and is further ornamented with a brilliant gold pin. The hat at the right is of silver cloth with crown and upper brim of black velvet. The little cloche shape at the left shows the influence of the Chinese fashion in its decoration, which takes the form of a conventional Chinese design in gold em-



DRESSES WITH NOVEL TRIMMING

means to work with and new fashions do not suffer because of their uniformity in outline.

In the illustration a new dress is shown that display a great deal of individuality, though their lines are almost identical. The dress at the left is of georgette with a woven design of chenille which gives a broad effect. The draped sleeve fastens at the shoulder and elbow with tiny bows of velvet ribbon and a huge velvet poppy is posed at the waistline. There is a slight drape to the skirt, which falls in two points at the side.

The model shown at the right is made of blue georgette crepe and has

broidery. A narrow gold ribbon is used as a band about the crown.

The jeweled mode makes its bow in the little hat shown below, at the right. In this model jeweled pins are used against a background of heavy corded cloth of gold. The sectional crown is also piped with the same gold material. The hat shown below is an attractive off-the-face model, in which the trimming takes the form of gold stitching over the entire crown and brim. The tabs at the sides are finished with loops of gold beads.

Metallic brocades and all metal hats are very popular for evening wear. Sometimes the metal cloth combines two colors, such as gold and blue or



HATS OF SILVER AND GOLD

an embroidered design in silk and metallic threads of blue and silver. The treatment of the collar and of the skirt is particularly interesting, the skirt being plaited to form panels over the hips and encircled with roses made of the crepe.

All is not gold that glitters on winter hats, but if not gold then it is silver or jewels, jet or brocade, because to be fashionable it seems there must be a glitter to the hat in

silver and purple. Materials of this kind appear to the best advantage in little oriental wrapped turbans trimmed with a simple ornament of celluloid or jewels.

Julia Bottomley
(© 1923, Western Newspaper Union.)

To Avoid Spotting Furniture.
Place a piece of waxed paper a little larger than vase or jardiniere under centerpiece or dolly used, and this keeps any moisture from going through to furniture. Sometimes a few drops of water will be unnoticed and a spot appears on your table.

IMPROVED UNIFORM INTERNATIONAL

Sunday School Lesson

(By REV. P. B. FITZWATER, D. D.,
Teacher of English Bible in the Moody
Bible Institute of Chicago.)
(© 1923, Western Newspaper Union.)

LESSON FOR NOVEMBER 18

OUR LORD JESUS CHRIST A MISSIONARY

LESSON TEXT—Matt. 9:35-38; Luke 8:1-3; John 3:16-17.

GOLDEN TEXT—"God so loved the world, that He gave His only begotten Son, that whosoever believeth in Him should not perish, but have everlasting life."—John 3:16.

PRIMARY TOPIC—Jesus Preaching in City and Country.

JUNIOR TOPIC—Jesus a Missionary. INTERMEDIATE AND SENIOR TOPIC—The Missionary Activity of Jesus. YOUNG PEOPLE AND ADULT TOPIC—Christ's Missionary Zeal.

I. The Missionary Motive (Matt. 9:35-38.

As Jesus saw the multitude His compassion was aroused. Their pitiful condition moved Him to take steps to provide missionaries. The result of this was the sending forth of the Twelve. Jesus saw the multitude as:

1. Shepherdless Sheep (v. 36). The people were in need of a protector, provider and guide, just as sheep are of a shepherd. They were faint and scattered—distressed, cast down and hopeless. What a picture of the needy world today! The world is hungry but knows not how to have this hunger satisfied. They know not which way to turn in their confusion and perplexity. They are in need of that which alone the Good Shepherd can supply.

2. Grain Ready for Harvest (v. 37). He told the disciples that the grain was ripe, ready for the harvest, and that unless laborers were secured the harvest would be lost. This is still a picture of the world. The laborers are still few. It is the Lord's harvest that is ready to be gathered. No wonder He was moved with compassion! Those who have eyes to see and hearts to feel are still moved with compassion as they see the world ready to be gathered into Christ's fold but no one to perform the labor. The means for securing laborers for the harvest is prayer. He urged the disciples to pray that the Lord would send forth laborers.

II. Classes of Missionaries (Luke 8:1-3).

Three classes are here enumerated: 1. Jesus Himself (v. 1). He is the grand and supreme missionary. All receive their example and power from Him. He left all and gave all in this great enterprise.

2. The Twelve (v. 1). Christ called them and sent them forth. They were His representatives and were clothed with His power. Missionaries should be chosen and commissioned by the Lord himself. In the evangelization of the world there will always be need of the group of men and women devoted exclusively to that work.

3. Certain Women (vv. 2, 3). Christian women can most effectively do their part in preaching the gospel by ministering to the workers. All who have experienced the saving grace of God desire to have a part in sending the gospel to others that they too might be saved. The church is greatly indebted to the work of consecrated women.

III. The Missionary Message (John 3:16, 17).

The salvation which is offered to the lost world was accomplished through the sacrificial death of Christ. Out of a heart of love God gave His own son to die. The figure portraying the method of the Cross and salvation is that of the brazen serpent. The outstanding teaching as suggested by Dr. Charles R. Erdman is as follows:

"1. That men are, like the Israelites of old, serpent-bitten; but the deadly poison is the sting of sin.

"2. God has provided a remedy in the person of His Son; in His crucifixion we see sin vanquished, as the uplifted serpent pictured the death of the destroyer; yet as the uplifted serpent was not real but one of brass, so Christ was not really a partaker of sin but only made in the likeness of sinful flesh.

"3. As it was necessary for the dying Israelites to accept God's provision, and with submission and faith to look upon the brazen serpent, so it is necessary for us to look in repentance and faith to the crucified Savior and to commit ourselves to God as He is graciously revealed in Jesus Christ. If we refuse to accept Christ we perish, but faith results in eternal life.

"4. This provision is made by the love of God and is freely offered to everyone who believes. 'For God so loved the world, that He gave His only begotten Son, that whosoever believeth in Him should not perish, but have everlasting life.'"

His Presence.

When we have broken our god of tradition, and ceased from our god of rhetoric, then may God fire the heart with His presence.—Emerson.

God's Way.

God's way of forgiving is thorough and hearty—both to forgive and to forget; and if thine be not so, thou hast no portion of His.—Leighton.

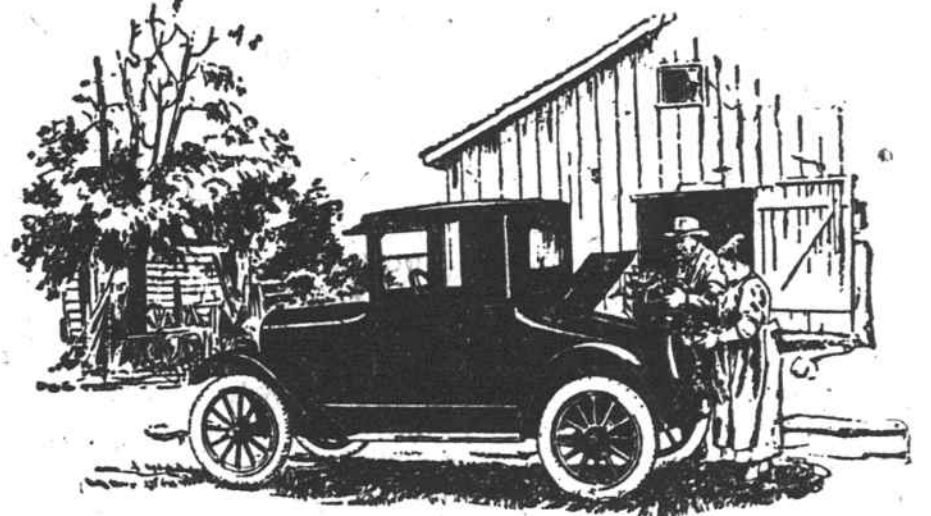
Heart and Home.

Without hearts there is no home.—Byron.

For Economical Transportation



Every Farm Needs Two



EVERY farm needs two automobiles, one of which should be a closed model Chevrolet.

The open touring car is best for general farm use, carrying passengers or perhaps miscellaneous bulky produce or merchandise, but for cold or rainy weather, and for church or social use the family needs a closed car, either a 2-passenger Utility Coupé as illustrated, or the 5-passenger Sedan. The extra large rear compartment is a feature of the Coupé.

These closed cars are very finely made, furnished, upholstered and trimmed. The windows are of plate glass and can be lowered, providing as much air as an open car, yet affording full protection against wind, rain, snow or cold when raised. With a second car on a farm, one is always available for those at home when the other car is out.

The low prices of Chevrolet make the ownership of two cars feasible for most farm families.

CHEVROLET MOTOR CO., DETROIT, MICH.
Division of General Motors Corporation

Prices Effective September 1, 1923
f. o. b. Flint, Michigan

Superior 2-Pass. Roadster	\$490
Superior 5-Pass. Touring	495
Superior 2-Pass. Utility Coupé	640
Superior 5-Pass. Sedan	795
Superior Commercial Chassis	395
Superior Light Delivery	495
Utility Express Truck Chassis	550

Five United States manufacturing plants, seven assembly plants and two Canadian plants give us the largest production capacity in the world for high-grade cars and make possible our low prices.
Dealers and Service Stations Everywhere

FIRST U. S. MILITARY MEDAL

Government Gave Gen. George Washington Decoration to Commemorate Evacuation of Boston.

The first military medal ever bestowed by the American government was one in gold to Gen. George Washington, to commemorate the evacuation of Boston by the British in 1776. Capt. Paul Jones was similarly rewarded after his famous fight with the "Serapis" in 1779, and the three men, Paulding, Williams and Van Wart, who captured Maj. John Andre in 1780, were given special medals by congress.

The first decoration, and so far as the staff of the U. S. A., and author of a work on military and civil orders, decorations and insignia, has been able to discover, which had a general application to enlisted men, was the result of an order issued in 1782 by General Washington. A soldier cited for the decoration was permitted to wear on his facings, over his left breast, the figure of a heart in purple cloth or silk, edged with narrow lace or binding.—Detroit News.

Unfortunately a man's epitaph comes along too late in the game for him to live up to it.

WIDENS MARKET FOR MEAT

United States Department of Agriculture Gives Hog Raisers Additional Outlet.

A wider market for United States meats, particularly pork, has been made available by the efforts of the United States Department of Agriculture and the State department, the most recent evidence of it being the opening of The Netherlands to shipments of fresh pork. This new market, with the English market, which was opened to the same products about 18 months ago, now gives hog raisers a considerable additional outlet at a time when production is at a high point.

The Silent Art.

"My boy, Josh, has given up tryin' to be a musician and wants to be a movie star," said Farmer Cornlossel.
"Are you disappointed?"
"No. We're all pleased. Josh won't have to make so much noise around the house practicin'."

Thinking counts little unless you act well.

A woman's nerves often make a man nervous.

As a man eateth so is he

THINKING moulds the mind and exercise develops the body, but food supplies the materials for building mind and body.

Grape-Nuts, made from wheat and malted barley, is a crisp, delicious cereal food, rich in wholesome nutriment.

The important mineral elements of the grains are readily available in this splendid food. The essential Vitamin-B is supplied in generous measure. The nutritious starches of the wheat and barley are partially pre-digested by 20 hours' baking.

Grape-Nuts with milk or cream is a complete food. Its compact form makes a little go a long way.

Sold by Grocers Everywhere!

Grape-Nuts

—THE BODY BUILDER

"There's a Reason"



St. Joseph's
LIVER REGULATOR
FOR BLOOD-LIVER-KIDNEYS
The BIG 25¢ CAN

The Public Demand.
"What are you going to make a doctor of?" answered
"If I can avoid it," answered
"Why should I risk
something that might make
me unpopular? All the public appears
at present is that I keep quiet
and be photographed."

**Hall's Catarrh
Medicine** is a Combined
Treatment, both
external and internal, and has been successful
in the treatment of Catarrh for over
years. Sold by all druggists.
J. CHENEY & CO., Toledo, Ohio

The Age Limit.
Should Withoress Is to be married
Is the bride very young?
Young enough to know better."

Your Work Hard?
Is your work wearing you out? Are
you troubled with throbbing backache—
headache, weak and discouraged? Then
go to your kidneys! Many occupa-
tions tend to weaken the kidneys. Con-
stant backache, headaches, dizziness
and rheumatic pains are the natural
result. You suffer annoying bladder
irritations; feel nervous, irritable
and worn out. Don't wait! Use **Doan's
Kidney Pills**. Workers everywhere
recommend Doan's. They should help
you, too. Ask your neighbor!

A North Carolina Case
E. L. Bryan, 11
West St., Sanford,
N. C., says: "My
kidneys got out of
condition, and I
had to get up at
night to pass the
water, which was
highly colored
and contained
sediment
besides burning in
passage. When I
had sharp pains shot through my
back, it hurt to straighten.
Doan's Kidney Pills soon rid me of
the trouble."

Get Doan's at Any Store, 60c a Box
**DOAN'S KIDNEY
PILLS**
POSTER-MILBURN CO., BUFFALO, N. Y.

What They Missed.
Two newsboys went to a perform-
ance of "Hamlet." In the last scenes,
after Hamlet had killed Laertes and
the king, and the queen had died of
poison and Hamlet of a poisoned
wound, one of the newsboys ex-
claimed: "Golly, Jim, what a time
that must have been for extras."

A Safe and Sure Laxative—
Sulphate Pills. One or two taken at
bedtime will keep you in good condi-
tion. Entirely vegetable.—Adv.

**Sure Relief
FOR INDIGESTION**
BELL-ANS
FOR
INDIGESTION
25 CENTS
6 BELL-ANS
Hot water
Sure Relief

BELL-ANS
4 AND 75¢ PACKAGES EVERYWHERE
**GREEN MOUNTAIN
ASTHMA
COMPOUND**
quickly relieves the distress-
ing paroxysms. Used for
25 years and result of long
experience in treatment of
throat and lung diseases by
Dr. J. H. Guild. FREE TRIAL
BOX, Treatment on Asthma, its
causes, treatment, etc., sent
on request. 50c and \$1.00 at
all druggists. J. H. Guild Co., Box 74, Rupert, Vt.

FLU Stop
Your
Coughs
and Colds
**FOLEY'S
HONEY AND TAR**
ESTABLISHED 1875
LARGEST SELLING COUGH MEDICINE IN THE WORLD
REFUSE SUBSTITUTES