

Building Days are Here

Winter Building Gains
 A questionnaire sent to the Department of Commerce by the winter depression in that the winter depression in building is being gradually leveled. During the last two years winter building has shown a decided increase over that of former years. It proves conclusively that the season is producing definite results. Investigation and experience have shown that the most north-south sections and during extreme weather work can go ahead about as fast and profitably as in summer.

Brick's Great Value
 Brick is the material that succeeds, few others can, in adapting itself to the wants of the man with good and a moderate income. In the use of brick on a proper plan it suggests all the qualities that should be associated with the word "home,"—permanence, hospitality, warmth, coziness, beauty. And brick has that rare quality characteristic which is to distinguish the elect among mankind—it grows old beautifully.

Time to Plant Trees
 Long winter evenings are the time for planning beautification of the home grounds. The man who plants a tree lives to point it out with pride.—Worth Star-Telegram.

Read The News
LET "PRICE" DETERMINE THE PRICE
 READ POLK COUNTY NEWS

COUNT SOYESHIMA



Count M. Soyeshima, former member of the Japanese house of peers who recently visited America and lectured at the University of Chicago, views America unfavorably, according to an article written by him for a Japanese monthly magazine. He says we are hypocritical, cruel and overbearing, and he also made unpleasant allusions to the way in which the prohibition laws are not observed.

What Roads Do

Roads. That's the answer to many things. Their coming is like the lifting of the shades in a darkened room and the people who live in that room become conscious of the rest of the world. They help keep down crime, promote good fellowship, permit the friendship of remoter individuals, inspire industry.—Greenville Advocate.



WANTED Middle Aged Man. Hustlers make \$50 to \$100 or more Weekly selling Whitmer's guaranteed line of toilet articles, soaps, spices, extracts and medicines. Polk County is open for you. You only need team or car. Experience unnecessary. Salesmanship taught Free. Full information on request. Write now. The H. C. Whitmer Company Columbus, Indiana Dept. 23 11-18-25-pd

WANTED: Young men and women Bookkeepers, Stenographers and Salesmen, learn in a few weeks in the Oldest Business College in North Carolina's Largest City, Small fee, easy terms, Board and room for boys and girls in the dormitory reasonable. Howard's Business College Winston Salem, N. C. April 29th.

FOR SALE—\$1,000 lot No. 1450 in Lake Lanier subdivision for \$375 net cash. Fifty foot front; depth 204 and 170 feet. Noah Hollowell, Hendersonville, N. C. 18-25-1-8

BUY THAT BED ROOM SUITE FROM "PRICE"

Community Building

City Lighting Matter of First Importance

An ornamental street-lighting system that affords adequate illumination at night, and also is inconspicuous in the daytime, harmonizing closely with the general scheme of architecture in the various parts of the city, is a source of great municipal pride. A city may have many beautiful thoroughfares, but their beauty is not apparent at night unless they are properly illuminated.

Proper lighting implies that the intensity of illumination should be varied to meet the requirements of the different sections of the city. Streets and avenues in the business districts where the traffic is heavier, for instance, require more light than those in the residential districts. Just the right amount of illumination is as necessary for effective street lighting as is the right method of illumination. The installation of a good lighting system is something that demands considerable thought and planning. Not alone the street-lighting system, but also the ornamental posts, the kind and shape of glassware, and the proper placing of the posts must be given careful study.

There are many streets and driveways which are beautifully lighted at night but which lose all of their pleasing appearance by day. This may be explained by studying the lamp posts. It will be found that the posts installed are huge and clumsy, poorly located, and do not harmonize at all with their surroundings. The posts, in fact, have marred the entire aspect of the street by day.

Vitality and Beauty in Buildings of Brick

Since the day when the Assyrians were in their glory the inventive genius of man has wrought great improvements in brick. Nowadays it is turned out of the kiln in nearly every color and shade, in every degree of coarseness and fineness. It dams a river, it paves a street, it forms the wall of a factory; it adorns the inside as well as the outside of a home.

There was once a time when the mortar joints were regarded as an unwelcome necessity, but that time is past. Modern art has shown that mortar can be made a valuable ally in attaining the ultimate object—beauty. With their units of many colors, the architect and the clever brick worker create a surface which has the look of a skillfully woven fabric, thus the bonding together of brick permits varied effects in what the architects call "texture." Brick has such a quality of humanity as clings to no other substance that goes into the making of a house.

There is always the knowledge that here is the work of human hands—that every piece was made by man and put into place by man. The effect, produced by man's harmonious arrangement of his many units, is one of lasting vitality.

It may be taken for granted that many a home builder has passed brick by because of mistakes ideas about its cost. In these days there is no reason for any man who is planning to build to yearn in vain for a home of brick; he may have it if he wants it.—Detroit Free Press.

Home-Owner's Value

The loss of one potential home owner eventually means the loss of incalculable wealth to the community. This was the opinion of Howard W. Elmore, vice president of the Chicago real estate board and now chairman of the committee of administration of the sixth annual "Own Your Home" exposition.

"When a community falls down on the job of securing even one family as permanent residents, it not only loses the sale of a house and lot, but it loses the ' upkeep ' on that family for a long period of years," he said.

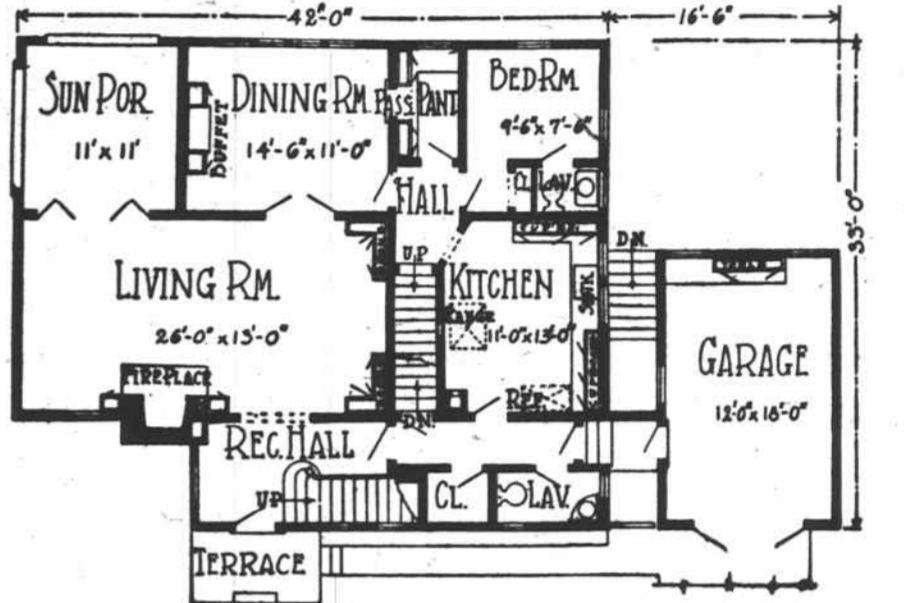
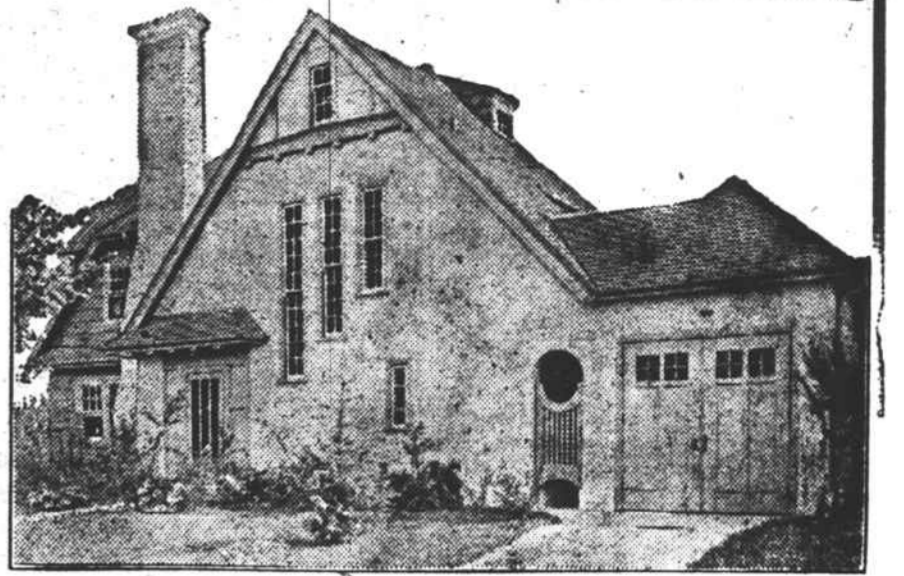
"One family may have many children and these children are likely to marry and settle in the same community. When one prospective home owner is lost, the purchasing power of many people is lost."

Why Snakes "Rattle"

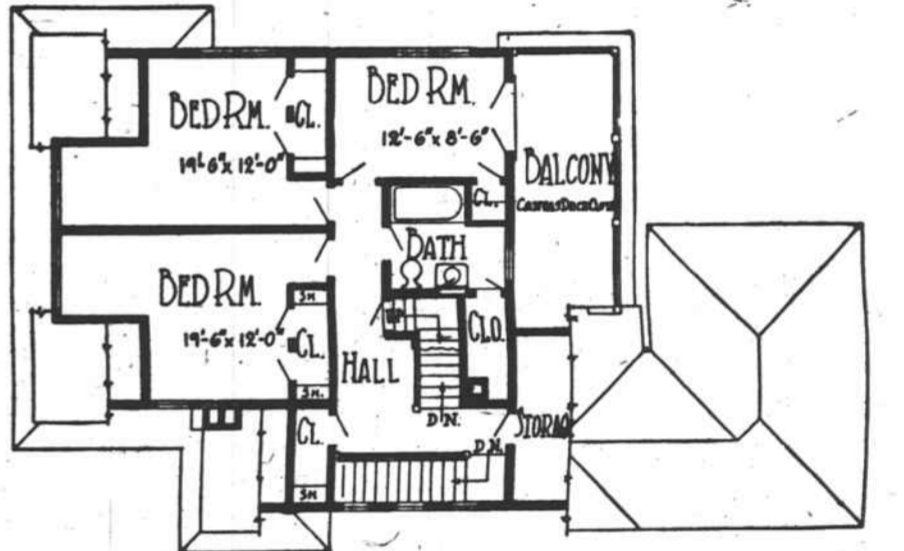
The vibrating of the snake's tail was a common characteristic of most snakes before the rattlesnake evolved from the common ancestral stock of Pit Vipers. The habit of vibrating the tip of the tail at a high rate of speed is believed to be an escape of nervous force brought about by immediate conditions.

READ POLK COUNTY NEWS

House and Garage Conveniently Combined in Attractive Building



First Floor Plan.



Second Floor Plan.

By WILLIAM A. RADFORD
 Mr. William A. Radford will answer questions and give ADVICE FREE OF COST on all problems pertaining to the subject of building, for the readers of this paper. On account of his wide experience as editor, author and manufacturer, he is, without doubt, the highest authority on the subject. Address all inquiries to William A. Radford, No. 1827 Prairie Avenue, Chicago, Ill., and only inclose two-cent stamp for reply.

Almost universal ownership of automobiles makes the garage an important consideration in the planning of the present-day home. By far the most common arrangement is a small separate building, to combine the garage with the house and thereby secure such additional convenience as the accessibility of the garage from the house without going out of doors.

When such a design is properly handled it is highly desirable, but care should be taken to avoid making the garage appear to be an addition merely "stuck on to" the house proper and also to subordinate it so that it does not appear as too conspicuous a part of the whole design.

This problem has been well handled in the house which is shown with the aid of a most attractive gateway which admits to the service entrance of the house and also to the garage. The stucco walls, on frame construction, lend themselves very satisfactorily to this treatment, and the shingled portion at the living-room end is effectively blended with them. Exterior ornament is strictly limited and simple in character. The gateway, already mentioned, a well designed entrance, the small-paned windows, brickwork at the top of the chimney and a panel effect in the gable, are the sum total of the ornamentation.

The floor plan shows a most unusual and practical arrangement of the essential rooms. From the terrace porch, entrance is made into a reception and stair hall, and from this directly into the large living room. Back of the living room is the dining room and, in the corner of the building, a sun porch. These living rooms are all well separated from the kitchen and first-floor bedroom as well as from the garage. The living room is provided with a large fireplace in the center of the front wall, built-in bookcases at one end and French doors opening into dining room and sun porch.

From the reception hall one passes into a hallway which gives access to the basement stairs, a hall closet, and a convenient lavatory. Beyond is the door which is used as a service entrance and which opens from the entry which also serves the garage. Back of this hallway is the kitchen from which another door opens into a small rear hall. From this there are doors opening to a second stairway to the second floor, the dining room and a pantry with service window into the dining room. Still another door reveals a bedroom with private lavatory which may serve as

a most convenient arrangement of servants' quarters.

On ascending to the upper floor we find two large bedrooms and one smaller one. The large rooms, placed over the living portion of the first floor, are practically identical, and each is provided with an unusually large closet, with shelves at both ends. The smaller bedroom has a smaller but ample closet, and there are large closets in the hall and off the bathroom.

The bathroom is conveniently placed at the head of the stairs within a few feet of all the bedroom doors. There is a large storage space under the roof adjacent to the garage structure, and a large balcony opening from the smaller bedroom. This balcony is decked with canvas and could easily be adapted to use as a sleeping porch. It is entirely hidden from the street side of the house.

Concrete Block for Partitions Advised

Basement partitions of concrete block or tile are recommended for carrying the weight of the floors and interior partitions as preferable to beams and columns, although for wide spans and heavy structures the latter are obviously necessary.

The rigid support afforded by interior masonry walls insures that there will be practically no settling of floors or interior partitions and consequently little if any cracking of plaster or loosening of interior trim. Such walls afford fireproof enclosures for heating equipment and fuel, confine steam, moisture and odors and provide isolation for fruit, vegetables or other perishables.

Concrete block and tile are much used for both load-bearing and non-load-bearing partition walls, also for fire-wall enclosures. Standard units are used for load bearing walls, while special units from four to six inches thick are often used for partition walls that do not carry loads other than their own weight.

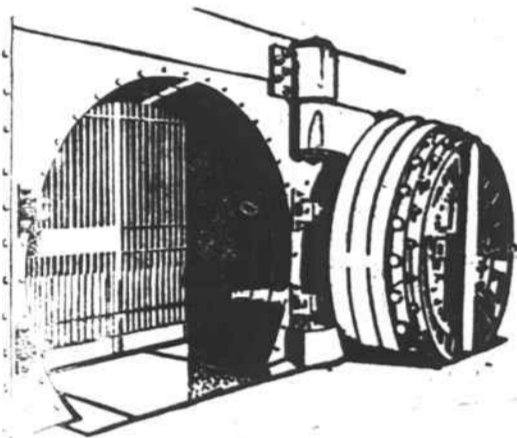
Wider Flooring

Present styles of architecture demand wide plank flooring for use with the early English, early French and Colonial house. Due to lumber having a tendency alternately to take on extensive moisture and dry out, one manufacturer of flooring is producing these wide planks, after lumber has been thoroughly kiln dried, of a veneered or laminated construction, to prevent shrinking, cupping, warping, etc.

Stucco for Beauty

Stucco is one of the most attractive types of construction and costs less for the effect given than almost any other type of construction. Stucco is ideally suited also for the needs of the man who wants to remodel his house.

SAFETY



Fire and thieves are an ever threatening menace to your money, your valuable papers and jewelry—and your peace of mind. Absolute safety can be had for but a trifling sum. Don't worry—don't be afraid of loss—rent one of our Safe Deposit Boxes.

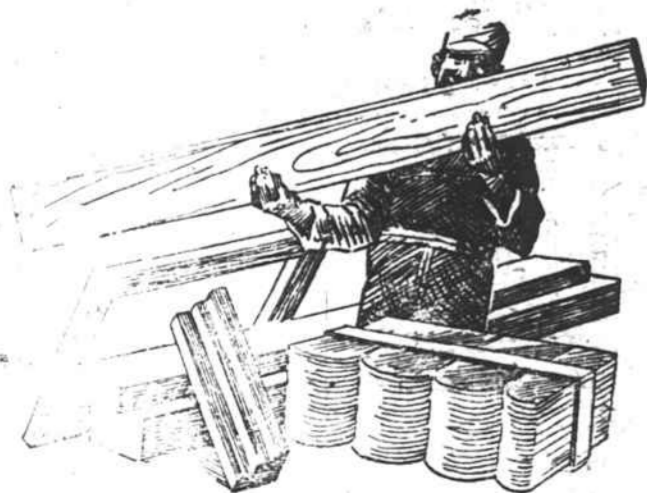
Your savings too, will be safe if INVESTED thru us. Start an account in our bank and let us save it for you until you need it. As long as you don't need it we will pay you 4 per cent interest plus absolute safety.

We cordially invite you to make our bank your bank and to consider us a friend, ready to serve you.

Polk County Bank & Trust Co.
 Columbus, North Carolina

LUMBER

Measured with the Golden Rule



We are ready to meet your building needs! Our yards are stocked with seasoned highest grade lumbers bought in large quantities when the market was right to cut your building costs. You'll also do better if you buy cement and other materials from us. At your service.

Landrum Builders Supply Co.
 LANDRUM, S. C.



What Are You Going To Do About It?

Sunday will soon be here. It comes every week just as it came in your childhood.

The bells will ring, the organ will make music, people will gather for devotions. Thus it will be in Tryon, and thus it will be throughout Christendom—not merely this week, but on every Sabbath to the end of your life.

Why?

Here is a force that persists—that surrounds you. The point is that it is here, present, living.

You cannot possibly ignore it.

What are you going to do about it?

Let's go! When? Next Sunday. Where? To Church.

Which Church? The Church of your preference.

BAPTIST

Regular services each Sunday 11 a. m. and 8 p. m.
 Special music evening services.
 Sabbath School 10 a. m.
 Public cordially invited.
 THOMAS L. JUSTICE, Pastor.

CATHOLIC

St. John's Church, corner Melrose avenue and Lanier street.
 Mass—Sunday 8:30 a. m.
 REV. J. A. MANLEY, Rector.

EPISCOPAL

(Church of the Holy Cross.)
 Sunday—Holy Communion 8 a. m.
 Sunday School 10 a. m. Morning Prayer and sermon 11.
 Confirmation Instruction — Monday 3:30 and 8 p. m. in Rector's Study.
 Wednesday—Mission Society Class conducted by Mrs. F. H. Touret, 3:45 p. m. Evening Prayer 5.
 Friday—Litany and address 5 p. m. All are cordially invited to these services.
 REV. C. P. BURNETT, Rector.

METHODIST

First and Third Sundays 11 a. m.
 Second and Fourth Sundays 7:30 p. m.
 Sunday School every Sunday 10 a. m.
 REV. P. E. PARKER, Pastor.

PRESBYTERIAN

Tryon—Second and Fourth Sundays each month 11 a. m.; First and Third Sundays 7:30 p. m.
 Columbus—First and Third Sundays 11 a. m.; Second and Fourth Sundays 7:30 p. m.

ERSKINE MEMORIAL (Congregational)

Rev. Will B. O'Neill, Minister.
 Sunday—Church School at 9:45 a. m.
 A graded school with classes for all.
 Wednesday—"Quiet Hour" 4:30 p. m.
 A friendly welcome awaits you.