

VFW Will Sell Poppies May 21, 22

Buddy poppy day, sponsored by the Veterans of Foreign Wars to raise money to aid disabled veterans here in Carteret county and to support national veterans' home, will be held May 21, and May 22, according to Dr. W. L. Rugger, senior vice-commander of Beaufort V.F.W. About 50 percent of the returns will be used locally.

Next Friday and Saturday poppies will be sold on the streets of Beaufort and Morehead City. Mayors in both towns have issued proclamations naming May 21 and 22 as civic poppy days. Mayor Hassell's proclamation follows:

"Whereas: The custom of setting apart certain days in each year to pay tribute to our heroes of Foreign Wars should not be abandoned or forgotten.

"Now therefore, I, W. L. Hassell, Mayor of Beaufort, N. C., in appreciation and devotion of this worthy cause and with an earnest desire to perpetuate this custom do proclaim May 21 and 22, 1948 as Buddy Poppy days in Beaufort."

Carolyn Mason, Atlantic, student at East Carolina Teachers college participated recently in a candlelight service of the Wesley foundation in Jarvis Memorial Methodist church, Greenville. The service was for installation of officers.

Harkers Island Inn To Open In June

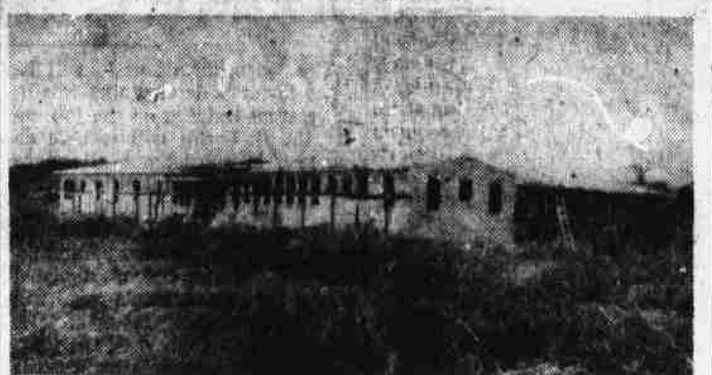


Photo by The Carteret News-Times

The Harkers Island Inn, located just east of Shell Point on Harkers Island, is nearing completion and J. B. Harker, who with his wife owns and will operate the inn, hopes to open the second week in June.

The inn will cater to parties of fishermen. The first will be the Metropolitan club of Norfolk, with a membership of 50 which will be in the inn the second week-end of next month.

The Harkers offer sports fishermen Gulf Stream fishing and all other types of coastal water sports involving finny creatures.

The long, rambling inn consists of a large entrance lobby, dining room, kitchen, sleeping accommodations for 50, and a small store where refreshments and cool drinks will be sold.

Mr. Harker has run into construction material trouble, as many other builders have, and most of the material was bought from the surplus supply at Bogue field. Building began in January, but was delayed too by the severe winter.

When construction plans are complete, a pier will be located in front of the inn. The Harkers will operate their own boat, the Elenore, and hire other local fishermen's boats as necessary.

Last year the Harkers operated a sports fishing service to Cape Lookout from Marshallberg.

London Theater Plan LONDON (AP)—Britain is to have a national theater "worthy of Shakespeare" along the south bank of the Thames about one mile from the site of Shakespeare's "Old Globe."

Chancellor of the Exchequer Sir Stafford Cripps says he will introduce legislation before 1950 providing for a grant of not more than \$4,000,000 for construction of the theatre.

Although spectator sports faced sharp curtailment in the early depression '30s, Americans in 1947 were spending 60 per cent more than in 1929 for such sports.

County Official Addresses Rotary Club At Inlet Inn

Dr. K. P. B. Bonner, chairman of the county board of commissioners, likened county government to a corporation Tuesday night at the weekly meeting of the Beaufort Rotary club in the Inlet Inn.

Gu's at the meeting were Miss Nell Stallings, physical education teacher at East Carolina Teachers college, and Bill Kittrell, ECTC student who will lead recreational activities in Beaufort during the summer months.

In his speech, Dr. Bonner pointed out that county government is "big business," and that as county administration grows more complex, it also grows more harassing financially. He said that 43 years ago it required three men, the sheriff, the register of deeds, and the clerk of courts to run the county on \$20,000, whereas now, the county has grown until it has about 14 million dollars worth of taxable property, and \$550,000 total revenue.

As for the county's financial indebtedness, Dr. Bonner stated that in six years, the debt was reduced from approximately four and one-half million dollars to two and one-half million. He explained that this had been accomplished largely by collecting delinquent and back taxes. He added that it would not continue to be decreased simply because the delinquent and back taxes had reached its "irreducible minimum."

Warning that recently they had only "gotten by" in meeting budget requests of various county units such as the schools, board of health, and farm and home agent, Dr. Bonner said that increased budget requests, due largely to increasing maintenance costs, makes it necessary that every dollar do the work of two. He added that county officers' requests were based on merit but that commissioners would be hard put to meet them.

Stressing the part the revenue from liquor sales played in defraying county expenses, Dr. Bonner stated that should this revenue be stopped, the taxpayer would have to pay as high as \$3.25 on every \$100, rather than the \$1.83 now being paid.

After his talk, he answered questions on county government, asked by Rotarians.

Jobs Guarding Nazis Suddenly Become Popular

BERLIN (AP)—Jobs guarding Rudolf Hess and the other six surviving major Nazi war criminals in Berlin's Spandau Prison, which once went begging, are now eagerly sought. When, after a year of four-year administration of the prison, the U. S. guard complement was unfilled, the American Military Government advertised in its Berlin Command "Daily Bulletin" to fill two vacant places. The Associated Press wrote a story about the advertisement, which offered the jobs at gross annual salary of 3619 dollars. The result was a flood of applications.

They came from Belgium, Holland, France, England, Hungary, the United States, Canada and numerous places in Germany. The non-American applications went into the wastebasket and so did some American bids. But others were retained on file in the event future vacancies must be filled.

The revenue system of the U. S. government is primarily based on six taxes: personal income, corporation income, liquor, tobacco, estates, and employment.

Farmer Proves Small Farms Can Yield Big Return

COLLEGE STATION, Raligh—C. G. Fisher, Transylvania county demonstration farmer, has proved that small farms can be made to yield larger returns by building up the land and conserving the soil, reports T. K. Jones, farm management analyst at State college.

Since 1935 Mr. Fisher has cooperated with TVA and the North Carolina Extension Service in testing high analysis fertilizers, conserving the soil, and following improved practices on his 56-acre farm in the Lake Toxaway community.

Mr. Fisher had been using 15 acres for cropland and eight acres for pasture. A larger acreage of better quality pasture was needed to support more livestock for a larger income. Five acres of the steeper cropland were shifted to pasture and seven acres more added by clearing woodland.

Liberal applications of lime, phosphate, and other fertilizers have resulted in much larger yields of both crops and pasture. Although the cropland has been reduced to 10 acres, more feed crops are produced than ever before. Corn yields have risen from 40 to 85 bushels per acre and hay yields have doubled. A three-year rotation is followed in which two-thirds of the cropland is kept in soil-conserving crops each year.

To utilize best his limited cropland and pasture acreage, Mr. Fisher turned to the production of purebred pointed Herefords. All cattle raised on the farm are registered or subject to registration. Mr. Fisher is rendering a service to the cattle producers of the community in permitting his neighbors to breed their cows to his purebred bull.

In addition to cattle, seven brood sows were kept in 1947. Hogs were raised mostly on the range, with grain feeding just before market. By conserving the soil building up the land, and practicing sound management principles, members of the Fisher family have made the farm pay and as a result are enjoying a high standard of living.

Blasting Aids Puddle Ducks

By Vern Haugland WASHINGTON (AP)—Blast the milfoil and bladderwort, the goosefoot and spatterdock out of your marshes and make the puddle ducks happy. This is the sober advice of the Fish and Wildlife Service—even if it does sound like double-talk.

Breeding populations of waterfowl, says the agency, have been increased by experimental dynamiting of potholes in vegetation-clogged swamps of Iowa and Maine. The artificially-established open water proved especially attractive to the puddle ducks—mallards, shovellers and the like. Diving ducks such as the redheads, canvasbacks, ruddy ducks and ringnecked ducks, showed some interest but in general still preferred to make their nests near deeper water.

Dr. Maurice W. Provost has provided the Fish and Wildlife Service with detailed reports on the blasting of Iowa marshes. "Throughout the prairie regions of the United States and Canada there are many small, shallow kettleholes," says Provost. "At their best these small ponds can support tremendous concentrations of nesting birds. Unfortunately, they often remain choked with vegetation."

Usually the grasses creep in when the muskrats, nature's pool-vegetation eradicators, are killed off. In addition to making marshes attractive for nesting ducks, dynamiting improves the living conditions for muskrats and invites them to return. "The added catch of muskrats alone," said Provost, "may defray the expense of blasting."

Food Problem SYDNEY, Australia (AP)—Because too many of his customers were ordering only tea and toast a Gympie (Queensland) proprietor has pasted a placard on the wall: "Get up or we'll both starve!"

DUSTY'S STAMP ALBUM

AMERICAN PYRAMIDS

THIS HUGE TOLTEC STONE GODDESS WEIGHS NEARLY 25 TONS. IT WAS CARVED WITHOUT METAL TOOLS

GIANT STONE CARVINGS ABOVE SOME EARLY TEMPLES

THIS CARVING IS OF QUETZALCOATL, THE PLUMED SERPENT

FEW PEOPLE KNOW THAT THERE ARE PYRAMIDS IN NORTH AMERICA, EVEN LARGER IN AREA THAN THE FAMED PYRAMIDS OF EGYPT.

- ON THE TOPS OF THE MOUNDS WERE LOCATED TEMPLES FOR WORSHIP.
- MANY OF THE MOUNDS WERE COVERED OVER AND ENLARGED BY LATER GENERATIONS.

The Soviet Union has issued a new series of postage stamps commemorating the 30th anniversary of the Soviet Army which took place February 23, 1948.

The new stamps, said the Moscow Bolshevik, show various military leaders and equipment and are in two denominations, 30 and 60 kopecks.

FOOD VALUES

High Quality—That's Our Line of All Foodstuffs

FINEST GRADE "A" MEATS
FROZEN FOODS

Freeman Bros.

Dial M-5751—M-5761

YOUR FAMILY CAN WIN \$25,000.00 CASH!

\$25,000.00 Is First Prize In Pepsi-Cola's "Treasure Top" Sweepstakes and Contests!

How'd you like to win \$25,000.00 cash? Here's your chance! Pepsi-Cola's great contests offer a top Family Sweepstakes Prize of \$25,000.00—among swell cash prizes! Also, State and National cash prizes every month! Lots of chances to win! Enter this sensational new series of Pepsi-Cola contests. Enter often—every entry gets a Treasure Certificate for the Family Sweepstakes Prizes. Contests close June 30, 1948.



Get the whole family in!

Look for "Treasure Tops"—Pepsi-Cola bottle tops with hidden designs under the cork. Collect 'em... swap 'em... get a complete set.

GET ENTRY BLANKS AT YOUR STORE

Bottled by: Greenville Bottling Co.
Under appointment from Pepsi-Cola Company, N. Y.

---COMPLETE--- Automobile Service

Wrecker Service - Motor Rebuilding

Wheel and Frame Alignment

Body and Fender Repair

Glass Replacement - Painting

LOFTIN MOTOR CO.

BEAUFORT, N. C.

Girl's Letters Spur International Relief

WORTHINGTON, Minn. (AP)—Tons of relief supplies have been shipped from Worthington to war-shattered Crailsheim, Germany. And about 200 citizens of each town write to each other. It all started when Martha Cashel, 11 years old, began writing to a girl in Finland.

Her parents, Mr. and Mrs. Charles Cashel, after sending gifts to their daughter's friend, sponsored extension of the project. Crailsheim was chosen through Com-

bined Relief Agencies Licensed to Operate in Germany (CRALOG) because it was similar in size and makeup to Worthington.

Rings made of silver coins once were believed to cure convulsions, and fish rings set with an eel hoof, epilepsv.

Vote for JAMES B. Vogler State Treasurer



DO YOU REMEMBER... POPCORN AT THE CIRCUS?

Of all the sights, sounds, and odors that make the circus such adventure to young and old... what lingers longer in the memory than the fragrance and crunchy goodness of fresh popcorn!

Here's a bread for your table with a flavor that is a pleasant surprise on first acquaintance... becomes your favorite for every bread purpose as you enjoy it day by day. Every slice is a real delight, no matter how you serve it!



Say
Bamby
to your Grocer

BRUSH ON A "NEW LOOK" WITH GLEEM NEW-BRITE ENAMEL!

Want to give a "new look" to your furniture—your woodwork, iron-work or automobile? It's easy—with GLEEM New-Brite Enamel! New-Brite is the all-purpose enamel for any job—indoors or outdoors. And in four hours, it dries to a hard, high-lustre finish that won't mar or scar!

So go to your GLEEM dealer and choose from the eighteen New-Brite colors. And remember! When you buy GLEEM, you get World's Finest Quality Paint!



Gleem NEW-BRITE 4-HOUR ENAMEL



R. T. Willis & Sons
Arendell St. N 223-1 Morehead City