

Too Much Puppy, Great Dane Stays Home

Omaha (AP)—The woman talking to an air lines official was planning to send her dog to Tokyo by air before making the trip to rejoin her husband, and she wanted to know the cost.

The going rate, the official told her, is \$3.45 per pound. "I guess we'll just forget about it," the woman said weakly. "We have a Great Dane. He weighs 125 pounds."

Indonesia is the largest Moslem country in the world in terms of people, says the National Geographic Society.



LUMBER
For Every Building Purpose
BUILDING SUPPLIES
Everything for Home Construction
PAINTS
Pittsburgh and Marietta
SCARBORO - SAFRIT LUMBER CO.
Phone 2-4581
Beaufort, N. C.

SPECIAL!
Air-Dried 1x5 d4s
Clear Grade - \$125
EXUM WOOD PRODUCTS
Highway 70 — West of Morehead City
Phone 6-4912 At Old Morehead Airport

GLASS FOR ALL PURPOSES
For All Purposes
Windows — Doors — Pictures
Commercial Store Windows
Table Tops — Mirrors
Auto Safety Glass Cut and Fitted
WE'LL DO THE JOB — JUST CALL
RUSSELL'S GLASS SHOP
PHONE 6-4744
Owned and Operated by Tommy Russell
905 Shepard St. Morehead City, N. C.

CONCRETE BLOCKS
SAND • GRAVEL
CEMENT • MORTAR CEMENT
Concrete Steps
Ornamental Products
Cement Drain Tile
Septic Tank Lids
Morehead Block & Tile Co., Inc.
Morehead - New Bern Highway Dial 6-3970

Straight Kentucky Bourbon
\$2.65 \$4.15
59 CT.
75%
8 YEARS OLD
26 PROOF
CASCADE
GEO. DIJON'S
CASCADE
KENTUCKY BOURBON WHISKY
GEO. A. DIJON DISTILLING COMPANY, LOUISVILLE, KY.

On The House



Wire brush basement walls to remove dirt and all loose particles before using cement-water paint.



Circular scrub brushing spreads cement-water paint over wall dampened by a fine fog spray.



Smooth surface is obtained by second coat in broad strokes with a whitewash or calcimine brush.



Each coat is cured by keeping wall damp with fog spray for 24 to 48 hours to prevent hair cracks.

for use with a roller, was tried. One coat covered better than the two coats of oil paint on top of shellac.
In another place cement-water paint was used with highly satisfactory results.
Portland cement paint, however, usually is available in plain white. If you want colors you add mineral pigments to suit. But the big advantage is that it provides a certain definite dampproofing quality which ordinary paints lack. Orendorf's report states: "Where the basement wall is subject to only mild or occasional dampness, it can often be made sufficiently dry by scrubbing in one or two coats of cement-water paint on the interior face of the wall. Where the water condition is severe, paint coats of this type usually will not correct the situation and it usually is necessary to excavate around the wall and apply Portland cement parge coating, over which two coatings of bituminous material is usually applied to bridge over any hair checks."
And here is the formula of that HHFA expert:
"Cement-water paint may be purchased ready-mixed or can be made by mixing either gray or white Portland cement with sufficient water to produce a creamy consistency. For coarse textured masonry walls, cement-water paints consisting of one part of fine silica sand (passing a 20-mesh sieve) and one part of Portland cement are effective. They are best applied by scrubbing in with a stiff-bristled brush similar to a household scrubbing brush. They should be kept damp for a few days to prevent hair checking."
The American Builder, trade publication for home builders, in an authoritative study of paint problems, recently observed that cement-water paints "repel moisture effectively." The method of use recommended is: (1) Vigorous wire brushing of surfaces; (2) Filling with a heavy paste, all large cracks; (3) Fog spraying the surface with a hose, allowing the water to drain off, but not dry; (4) Applying the first coat with circular movements of a scrub brush, without brushing the paint out; (5) Curing with a fine fog spray after the first coat has hardened, keeping it damp for 24 hours; (6) Applying a second coat in long, horizontal strokes with a whitewash or calcimine brush; (7) Curing after this coat has hardened by using a fine fog spray and keeping the surface damp for at least 48 hours.
If basement walls have been painted before, all old paint must be removed before using cement-water paints. But cement-water paints can be painted over in colors after a primer has been applied.
Britain's schools of law, called the Inns of Court, were damaged in the great London fire of 1666 and by bombs in world war II.

Rent Director Answers Queries

(These questions were selected from those often asked of local rent office. If you have a question about the rent stabilization program, address it to: Area Rent Office, 9th and Arendell, Pender Bldg., Morehead City, N. C.)

Q: We have lived in this apartment about two years. During this time, with the consent of our landlord, we have re-finished the floors, painted the woodwork and re-papered three of the rooms, at our own expense. Now the landlord wants to evict us so that his daughter who is to be married soon can move in. Can he do this? We think he should evict one of the other tenants who hasn't spent so much on their unit. But if he does make us move, is there any way we can recover from him the expense we have been put to in fixing this place up?

A: You have really asked several questions in one. If your landlord is acting in good faith and actually intends for his daughter to move in, he can petition our office and secure a certificate relating to eviction to evict you. All that such a certificate does is to let him exercise whatever rights, if any, he has to evict under the state law. We can do nothing about his evicting you instead of another tenant. He has the right to select the unit he wants. Regarding your rehabilitating the unit and any chance for you to recover the expenses for such, we are sorry to say there here, too, we have cautioned tenants time and again not to rehabilitate rental units or make repairs unless he makes an advance agreement with his landlord regarding the rehabilitation and gets it approved by the rent office. Generally speaking, the legal procedure on this, if the unit is in need of repair, painting or decorating, and the landlord fails or refuses to have the necessary repairs made, is for the tenant to petition our office for a rental reduction.

Q: On the date that this area was declared critical, I was renting a five-room house under a lease which entitled the tenant to use the garage right behind the property. As the tenant did not own a car, both he and I have used the garage for storage purposes. My tenant has now purchased a car and insists that I move my things out of the garage so he can use it. If I do so, can I charge him \$5.00 a month extra for the garage, which is the usual garage rent in this neighborhood? It is my belief that because he did not use the garage on the date the area was declared critical that the garage no longer goes with the house. My tenant says that the garage went with the house regardless of whether he had a car or not.

A. Your tenant is correct. The very fact, as you stated yourself, the lease covering the unit in question, on the date the area was declared critical provided for a five-room house with garage in rear.

Make Do



Knotholes in wood forms for cement work can be quickly patched with a piece of sheet metal only slightly larger than the hole, says the American Builder, trade publication for home builders. Merely bend a quarter-inch of each corner to form prongs, place the sheet over the hole, hold it with a block of wood and tap it down with a hammer.

Long Island Student Lives In Cemetery for Two Years

New York (AP)—A Long Island student will live in a national cemetery for the next two years because he submitted the high bid for rent on a house to the U. S. Army engineers.
The one-family frame house and two sheds is located on farmland purchased by the Army as an addition to the Long Island National Cemetery. It is estimated the graves will not reach Vincent J. Grievels front yard until his two years are up. He is a student at the Long Island Agricultural Technological institute.

Name of Railroad Station Irks Czech Communists

Vienna (AP)—The main railroad station in Prague is named after President Woodrow Wilson in honor of his work to give Czechoslovakia her independence.
But now that the communists are in power, the newspaper Kveti reports that the Prague city council is considering renaming it. The newspaper says a new name also may be given to the station named after Thomas Masaryk, founder of the Czech republic.

Clean Paint Brushes

Paint brush dirty? Slap it back and forth over a washboard propped up in a pail of thick soapsuds. Dip the brush down into the suds and then rub it across the board. Rinse in clear water; let dry, wrap, and store until needed.
would be the final answer that "the garage does go with the house" and therefore, you cannot secure a rental adjustment to cover such garage when it would not be an additional service. The tenant is now entitled to use of the garage, and if you in any manner keep him from using it, he may petition our office for a rental reduction because of a decrease in services.

NATIVE PINE MOULDINGS OF ALL DESIGNS
Lowe Brothers Paints
Fabulon Floor Finish — Window Units
LOCKHART MILLWORKS
Phone 6-3918
Highway 70 West of Morehead City

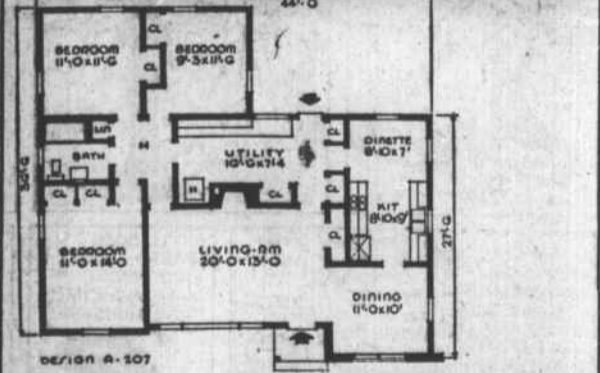
SEE THE LARGE DISPLAY OF
"VIRDEN" ELECTRIC LIGHTING FIXTURES
IN OUR SHOP
ED CARRAWAY
Phone 2590 or 2150 Next to Post Office Newport, N. C.

PLUMBING CONTRACTORS
(WE FINANCE)
HOUSEHOLD APPLIANCES — FIXTURES
Beaufort Plumbing & Supply Co.
Phone 2-4956
520 Front St. Beaufort, N. C.

Storm Windows and Doors
Save Fuel and Reduce the Cost of Home Heating
Let us estimate the cost of your storm windows and doors at no cost to you — have a comfortable house this winter.
MITCHELL'S CARPENTER SHOP
Phone 6-3956 Highway 70
West of Morehead City, N. C.

BLACK & DECKER ELECTRO POWER TOOLS
CARPENTER TOOLS
PAINTERS SUPPLIES
MASONS SUPPLIES
HARDWARE FOR BUILDING PURPOSES
Hardware & Building Supply Co.
Phone 6-3247
727 Arendell St. Morehead City, N. C.

IS THIS YOUR DREAM HOUSE?



THE ASBURY has a large utility room with three closets and a cabinet substitutes for a basement in this plan. It also houses the heating and laundry equipment.
A galley-type kitchen with cabinets on opposite walls allows for a large cross-lighted dining space in the kitchen. In addition, there is a double glazed picture window and fireplace in the living room.
Wardrobe closets in the bedrooms, three closets in the utility room, linen cabinet and coat closet provide for storage needs.
The first floor consists of an insulated slab on gravel fill. Exterior finish is asphalt shingle, with siding and a touch of brick in the front.
Overall dimensions are 44 feet by 27 feet 6 inches. Area is 1,292 square feet, eubage 16,356.
We have the most complete selection of plans for ideal small homes in this area, plus the materials to make them to your specifications. We also are ready to help you modernize and repair your present home.
HUNTLEY'S
BEAUFORT N. C.

Here are the **STRAIGHT SOLID FACTS** that lead thousands to **better truck buys!**

- FACT No. 1** Costs Less to Buy
- FACT No. 2** Rock-bottom operation and upkeep
- FACT No. 3** On-the-job efficiency saves money
- FACT No. 4** Keeps its value longer



CHEVROLET
MORE CHEVROLET TRUCKS IN USE THAN ANY OTHER MAKE
first
SOUND CHEVROLET COMPANY, INC.
1308 ARENDELL ST. Phone 6-4071 Morehead City, N. C.

Veterans of the trucking business buy for good, solid, levelheaded reasons. And they buy more Chevrolet trucks than any other make. Here's why. Chevrolet trucks — tires, frame, axles, springs, engine, transmission, brakes — all are factory-matched to your job.
Come in, and let us show you how great these Chevrolet trucks really are.