

Statistics

The overall dimensions of House of The Week HW-98 are 35 feet 6 inches by 58 feet 2 inches, including the garage and the patio.

The house has 1,395 square feet, excluding garage and patio. It will handily fit a 50 by 100 foot lot.

A 50-foot lot is just about as narrow as present building permits allow, but even where there is no zoning or building requirements, this house is ideal for the smaller, "forgotten" piece of property.

Bouvet Island (area 22 square miles) is a south Atlantic Ocean colony of Norway.

The House of the Week

Big Family House Fits 50-Foot Lot

By JOHN O. B. WALLACE

Are you trying to keep a roof over the heads of a large family, on a "small family" income? Here's a house designed to help solve your problem:

It's a small house with a big look to it.

It can be built on a town-sized lot. Yet it has three, or even four, bedrooms.

It has a 20 by 12 foot living room, an 11 by 8 foot dining room, a center hall plan, an 11 by 19 foot kitchen, an attached garage, a master bedroom suite and even an outdoor patio.

These are all "large house" features—yet the house can be built at moderate cost on a lot as narrow as 50 feet.

Architect Lester Cohen, who created this plan designated HW-98 in the House of The Week series, went to work on this difficult design assignment with some misgivings.

"To complicate an already difficult problem," he explains, "most people like the convenience of an attached garage." Cohen solved that problem, among others.

The garage makes the seven-room house appear larger than it is; the garage makes the patio possible and, best of all, the garage removes the "accordion" look so often found in narrow houses.

Fourth Bedroom or Den The room that is really unexpected in a house of these dimensions is the fourth bedroom. It has all necessary details to serve as an extra sleeping room for your family needs.

Or it is adaptable as a den, a study, a guest room, or a playroom. This room separated by folding doors from the center hall, is the indoor counterpart of the patio on the other side of the house—it's secluded, private and convenient.

The center hall plan, unusual in a narrow house, is a major interior feature. Because of it, no room becomes a corridor.

The living room is at the front, with a two-way, corner fireplace that can be shared by both the living and dining rooms. The living room has two full walls for high bookcases or other built-in furniture. The living and dining rooms form an L, with a 20 foot sweep across the front and the same sweep from front to back.

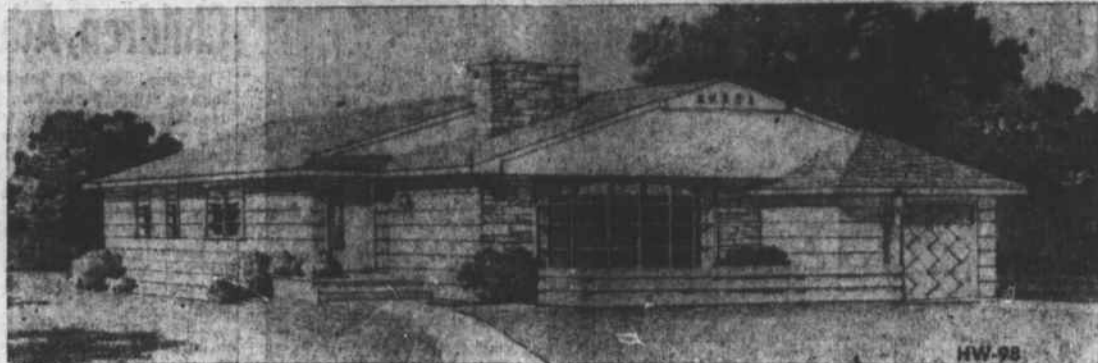
Sliding glass doors form a window wall for one side of the dining room and open onto the patio, which extends nearly 20 feet and is enclosed on one end by the garage and on the other by the master bedroom suite.

There is direct access to the patio from the master bedroom, the garage, the dining room and the kitchen. The service entrance to the kitchen is from the patio. The master bedroom lavatory is convenient for use as a guest washroom from the outdoor patio.

Well Planned Kitchen The kitchen has corner doors, one to the dining room, one to the patio and one to the core of the house with ready access to the cellar stairs and the front door. The "L" arrangement of the kitchen leaves an area for a breakfast nook or a built-in snack bar.

The master bedroom, a suite in every sense of the word, is distinctive for a house of this size. The suite is noise-insulated from other rooms by a huge dressing alcove that includes a built-in vanity and a group of four, extra-large closets with sliding doors.

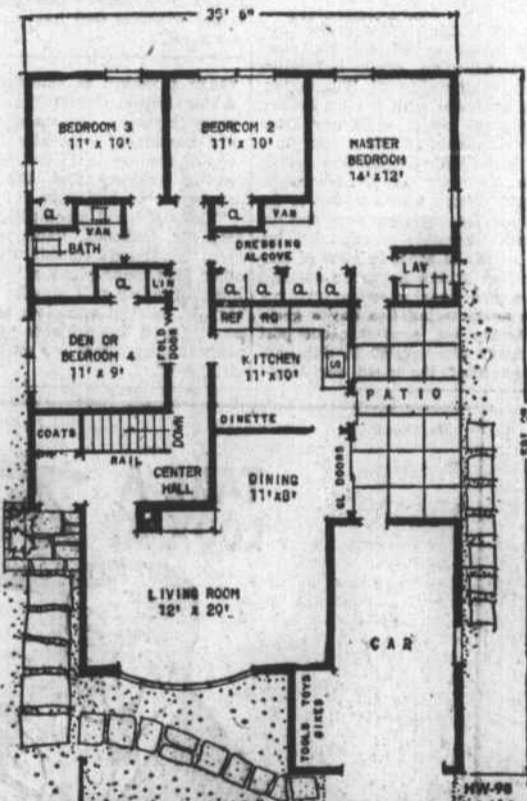
The children's bedrooms are of comfortable size. One has cross ventilation, and there are two large windows in the other. A



Perfect for a narrow lot, this small house with the big look has seven rooms and 1 1/2 baths. It has three bedrooms and even a fourth if desired.



This interior view shows the living room with its bow, picture window and a portion of the dining room separated from outdoor patio by sliding glass doors. The two-way, corner fireplace serves both living and dining rooms.



A center hall plan is the major interior feature of this house designed for a narrow lot. Thus, no room becomes a corridor.

bathtub with an alcove vanity and a built-in tub serves all bedrooms other than the master bedroom and is handy to the center hall.

The exterior of the house is in wood siding with a stone chimney and stone trim at the front, and a white pine plywood flush gable at the front and rear, an asphalt shingled roof, a bow picture window at the front of the living room, a wood fence, a lamp post and a decorative overhead garage door.

Writer Gives Light Figures

A new set of home lighting standards recommends lighting according to the size of the room. The figures released by the American Home Lighting Institute are these:

Very small rooms, up to 125 square feet, need a 12-to-15 inch ceiling fixture equipped with a 100-watt or three 40-watt bulbs.

If the user likes wall lighting, he can use a 6-foot valance or cornice. Average rooms between 125 and 225 square feet need a 15 to 17-inch ceiling fixture with one 150 or five 40-watt bulbs. The alternative is 8 to 12 feet of wall lighting.

Larger rooms over 225 square feet call for 16 to 20 feet of wall lighting. These may be supplemented by low-hanging ceiling fixtures in corners and activity centers.

Send This Coupon

Coupon form for requesting a study plan for house design HW-98. Fields include Name, Street, City, and State.

You can take this study plan to your bank or other mortgage lender and to your builder and get rough estimates on the cost of construction in this area, as well as an idea of the relation of the cost to your budget.

With this information you will know whether you will want to proceed with construction by ordering working blueprints direct from the architect and asking for bids for the work.

You can get a study plan for The House of The Week by filling in your name and address on the coupon on this page and sending it with 35 cents to this newspaper. This study plan shows each floor of the house together with each of the four elevations, front, rear and sides of the house. It is scaled at 1/4-inch per foot. It includes a guide on "How to Get Your House Built."

Two Fire Trucks, Police Car Have Rough Sledding

Zanesville, Ohio (AP)—It was a minor fire, but you should see the fire trucks.

The pumper was hit by a skidding car as it pulled out of Central Fire Station onto an icy Zanesville street. The aerial truck was rammed by another as firemen backed it into the garage after the fire.

And a police cruiser, hurrying to the fire, was hit by a third car.

Garden Tools

for Home Improvement at your Western Auto Associate Store

904 Arendell St. Morehead City, N. C.

Young Author Asks Help To Spell Part of Word

Little Rock, Ark. (AP)—One of Miss Betty Benson's grade school pupils asked how to spell a word that he pronounced "sex."

Miss Benson was surprised but complied. Later she looked at the story the boy had written and saw that it concluded: "I like turtles and in-sex." She explained to the young author how to spell "insects," but he thought the advice was needless. "I already knew how to spell 'in,'" he told her. "I asked you how to spell 'sects'."

Advertisement for Culligan Soft Water Service, featuring a cartoon of a man and a woman and the text "EVERYBODY LOVES SOFT WATER!"

Lumber

For Building and Home Improvement At a Savings

WILLIS BROS. LUMBER CO.

Highway 70-A Phone 6-3527 Morehead City

Building Material

Gleem Paint, Insulation Material, Lime, Plaster, Sand, Gravel, Mortar Mix, Plumbers' Supplies, General Hardware, All Type Wood Molding, Tile, GE Appliances, Scott-Atwater Outboard Motors, Tools, Hardware.

LUMBER

Allen & Bell Hardware Co., Inc.

Phone 279-1

Newport, N. C.

The Little Nine of Morehead City, Inc.

N. 18th Street Morehead City

Phone 6-5454

Offers professional Landscaping Service, including fill dirt, top soil, seeding, fertilizing, liming, spraying and mowing. Manure also available. We specialize and are experts in establishing and maintaining lawns.

No job too big or too small.

Phone 6-5454—Nights until 10 P.M. 6-5359

REDDY MIX by DAVE LINDSAY

Cartoon strip featuring Reddy Mix concrete and a character named Dave Lindsay. Includes text like "OH MAN! DID I GET A BIG KICK OUT OF KISSING MY GIRL LAST NIGHT?"

CARTERET CONCRETE Co.

915 Arendell St. Morehead City, N. C. Phone 6-4859

For the best in Floor Work

Call Fred Harvey 2-3002

Complete floor finishing—Plasti-Coat, sanding, varnishing, polishing and tiling

"You name it—Fred can do it"

Highway 101, Box 119 Beaufort, N. C.

Talk Over Your Home Improvements With Us!

We can help you solve your improvement problems through personal loans, refinancing of present loans.

Whether you win the contest or not, you will have made your home a healthier, more pleasant living place. "It's easier to repair than replace."

Commercial National Bank

Morehead City • Sea Level

TRY



For All Home Improvement Needs

SEARS

Catalog Sales Office Phone 6-4104 915 Arendell St. Morehead City

Advertisement for Building Supplies, listing various materials like windows, lumber, wallboard, doors, insulation, and cabinets. Contact: Morehead Builders Supply Co., Highway 70-A, Phone 6-3069.

Advertisement for D. A. Ballou, offering home improvement services like topsoil, fill dirt, and boat decks. Contact: 2300 Bay St., Phone 6-4418.

Advertisement for Lockhart Millwork Company, manufacturers of native pine moulding, special moulding made to order, cabinets, windows, doors, and door frames. Contact: Highway 70 West, Phone 6-3918.

Do's and Don'ts Of Home Repairs

Home repair tips including: DEFECTIVE WALLPLUG, KNOT, TERMINAL SCREW, LAMP CORD, and COUNCIL PRESIDENT DOES HIS VOTING WITH A BANG.

Advertisement for Add-omatic Savings, an automatic savings plan. Includes a chart showing how much you can save over time and a list of participating banks.