

Pine Knoll Shores Typifies Gracious Suburban Living

Submarine

(Continued from Page 1)

the juke box are rigged all through the sub. All the dimes put in the juke box are turned over to the recreation fund.

The submarine has a movie projector and always has a stock of film on hand for daily showings. The movie projector has a Cine-mascope lens but there is not much room for the wide screen.

Another important morale factor is the incentive pay submariners get for hazardous duty. Commander White said the pay roll averaged \$7,000 to \$8,000 every two weeks. The tour continued through the submarine with officers and members of the crew explaining the various features of the vessel. The jovial attitude of both officers and men and the neat appearance of the sub were the two most striking things about the tour.

Only the Best Get In

Before a man gets in the submarine service he must pass severe physical and psychological tests. When a large number of men is in a relatively small space for a long period of time it is important that all be cheerful, well-adjusted persons.

Commander White gave Mayor Dill a cigarette lighter with USS Argonaut SS 475 and a ship's emblem on it. He presented the chamber of commerce with a round plaque with a metal ship's emblem. Mr. DuBois said that he would put the plaque on the chamber office wall.

Everyone who visited the submarine reported that they received the same VIP treatment the mayor and chamber officers got. Mayor Dill promised the submarine crew the same courteous welcome he received when they came to Morehead City for liberty over the weekend.

Pine Knoll Shores, one of Carteret's newest and fastest developing suburban areas, is four miles west of Atlantic Beach on the Salter Path Road. The Shores represents but a small part of a seven-mile stretch of Bogue Banks owned by the heirs of Theodore Roosevelt.

The entire property embraces about 2,000 acres between Bogue Sound and the ocean. Pine Knoll Shores covers 138 acres on the eastern end of the property. It has been divided into 28 ocean front lots, 13 sound-side lots and over 200 lots on the rolling interior acres.

Many buyers seem to prefer the high, wooded interior lots. These reasonably priced building lots are far enough away from the ocean to be safe from storm damage and yet so elevated that they offer a direct view of the ocean over the ocean-front lots.

Two houses are under construction now at Pine Knoll Shores. In less than a year, agent Fred Clarkson has sold 18 lots to substantial citizens.

Doctors, lawyers and college professors head the list of persons who have bought property at Pine Knoll Shores.

Paved Streets

Despite its recent beginnings, Pine Knoll Shores has a look of permanency. Several streets have been paved and a number of all-weather roads have been constructed. An attractive sign welcomes visitors to the property.

To make Pine Knoll Shores attractive for "home folks", the owners have made three parks that will be community property.

Persons who own property in the Shores can make use of the parks as they see fit. Two of the parks are on the Bogue Sound side of the area and one is on the ocean side.

Carefully Planned

Pine Knoll Shores has been carefully planned so that the land contour, the large graceful trees and the near-tropical vegetation will serve as an unusual setting for many beautiful year-around homes.

All waterfront lots are 100 feet wide and most of the interior lots run between 70 and 80 feet wide. Each lot has a right-of-way on at least two sides.

The naturally rolling terrain, shade trees, vegetation, healthful climate and excellent beaches assure home builders at Pine Knoll Shores a pleasant, comfortable and satisfying environment.

Air Service Will Start Here June 1

Piedmont Airlines has announced, from its Winston-Salem office, that present plans call for starting air service to the Beaufort-Morehead airport Sunday, June 1.

Many vacationers — fishermen, surf lovers, families, or businessmen with a limited amount of time for leisure, find air service allows them more time here on the coast.

The Beaufort-Morehead airport is located at Beaufort. Unlike many airports, it is just a couple minutes' ride from town. The Piedmont office at the airport will be open as soon as air service starts.

New Power Artery to Feed Morehead-Jacksonville Area

By JACK RILEY

Crews of big men and still bigger machines are at work along the northeast Cape Fear near Wilmington, cutting right-of-way for a high-voltage line that will increase Carolina Power & Light Company's power supply to the Jacksonville-Morehead City area.

The 110,000-volt line will extend across country eastward from CP&L's Louis V. Sutton steam electric generating plant at Mount Misery on the Cape Fear, span the Northeast Cape Fear near Castle Hayne, and throw its shadow near the site of famed Lillington Hall, home of Revolutionary War leader General Alexander Lillington.

It will cross the Holly Shelter State Game Refuge, and continue in a "bee-line" to tap CP&L's distribution substation at Jacksonville. There it will feed a network of lines fanning out to Morehead City, Swansboro, Richlands, Newport, Beaufort, Atlantic Beach and other communities along the coast.

Poles and line will begin to rise in early June. The new power artery will be "hot" by next August. The high-tension conductor will span 47 miles—the longest single transmission project to be built by CP&L this year. It will in one step unite Wilmington, Jacksonville and Morehead City.

It will also complete a 110,000-volt transmission loop connecting CP&L's Goldsboro and Sutton plants—both post-war additions to southeastern North Carolina's power arsenal.

Vortex of Progress

At the juncture of these high-voltage lines is a vortex of economic growth that is outstanding in the CP&L service area.

The change is especially notable in Morehead City, and is sparked by a variety of enterprises which make the community a model of economic diversification.

The state port facilities and native fishing and shipbuilding industries here give the taste of the sea to Morehead's progress story. Roofing, chemicals and textiles add the color of traditionally inland industries. Its tourist trade continues with unabated vigor. Pleasure fishing and sunny beaches attract sea lovers the year around.

Morehead and its companion community of Atlantic Beach across Bogue Sound have known a year of unprecedented building and expansion. Pacing Atlantic Beach's growth are new concession buildings, new beach homes, a new fishing pier, a new municipal building and other lesser construction projects.

Only a month ago CP&L crews changed out a feeder line to the beach from the old Morehead substation, switching to the company's new substation on the outskirts of town. This new distribution link gives the beach resort more power capacity on which to grow.

26 Conventions in 1958

Morehead City is well established as a convention center in the Carolinas, and its refurbished Morehead Biltmore Hotel is a popular convention headquarters.

Twenty-six conventions are on tap for Morehead in 1958—many more are expected next year.

To serve conventioners and permanent residents alike seven new stores have gone up in the past year; five of them are now in operation. Eating places are expanding to accommodate the throngs. Morehead's streets have been widened to take the flow of traffic. Fort Macon State Park offers new facilities.

Assisting Morehead's progress is electric power. Its most modern aspect is the heat pump, already installed in several homes, commercial and professional buildings to give year-round cooling and heating through the basic elements of air, water and electricity. Modern street lights "dress up" the community.

Power Usage Up

All classes of CP&L customers in the Morehead area are using more electricity than ever before according to George Stovall, local CP&L manager; in fact, they are well ahead of the company's system average, which stands 43 per cent above the national norm.

The domestic customer is still the leader in total power usage. Mr. Stovall says, and in the Morehead City area uses an average of 4,812 kilowatt-hours per year, compared to the CP&L system average of 4,539. The residential customers served by the Morehead office of CP&L used 1,680,024 kilowatt-hours of power in April alone—an increase of 216,320 kwh over April a year ago.

Rural growth has continued too, and customers in the rural home and on the farm average 3,514 kilowatt-hours of power per year; commercial customers 11,988; and industries 244,412 kilowatt-hours per year.

All commercial and industrial establishments have shown gains over last year in power usage—proof that they have weathered the so-called recession.

Morehead City's economic growth, and its 53 years of electric service, is one of the highlights in the history of Carolina Power & Light Co., which notes its 50th anniversary this year.

"CP&L's attention will continue to focus on the area," says Mr. Stovall, "because the years to come are the most promising years of all."

He added that with the improved port facilities, plus the other natural industrial advantages that the community enjoys, the Morehead City area is expected to show continued prosperity.

"CP&L plans to continue its expansion of facilities to meet the power needs," he added. "The two new generating plants—Sutton and Goldsboro—are evidence of the company's concern for better service to the area." Mr. Stovall described the new transmission line from Sutton to Jacksonville-Morehead as "just another chapter in the progress story."

Native Son in Paris



Rear Admiral James W. Davis, USN, son of Mrs. J. J. Davis of Smyrna, is now in Paris, France as Naval Deputy to the commandant of the NATO Defense College. He was chief of staff and aide to Vice Admiral Wallace M. Beakley, commander of the Seventh Fleet, prior to the Paris assignment.

Port Calendar

Patella—Sailed from state port Sunday after unloading asphalt at Trumbull's.
Kloosterdyk—Sailed from state port yesterday with a load of tobacco for European ports.
Chastine Maersk—Sailed from state port yesterday with tobacco for the far east.
Goettingen—Due at state port Friday to load tobacco for Hamburg.
Perseo—Due at state port Saturday with a cargo of petroleum products for Standard Oil.

Two Autos Collide Near Broad Creek

Two cars collided at 7:30 p.m. Sunday on NC 24 near Broad Creek. Driver of a 1952 Chevrolet which was struck in the rear was Mrs. Rosa Bell, route 1 Newport, who complained of a neck injury.
Patrolman W. E. Pickard said she was struck as she was making a left turn. In the other car, a 1955 Ford, was John C. Billings, Camp Lejeune. Damage to each car was estimated at \$200.
Billings was charged with following too closely.

Hearing Date Set

Army engineers will conduct a hearing at 10 a.m. Monday, June 16, at the Beaufort courthouse. Subject of the hearing will be storm problems affecting North Carolina from Portsmouth Island to Moore Inlet.

Board Meeting

(Continued from Page 1)

ley to check with the auditors to find out exactly what was due the recreation commission.

Street Funds Low
Street commissioner G. E. Sherderson reported that his department was running low on funds for the fiscal year. He predicted that he would be able to "somehow" manage to keep up the services of his department.

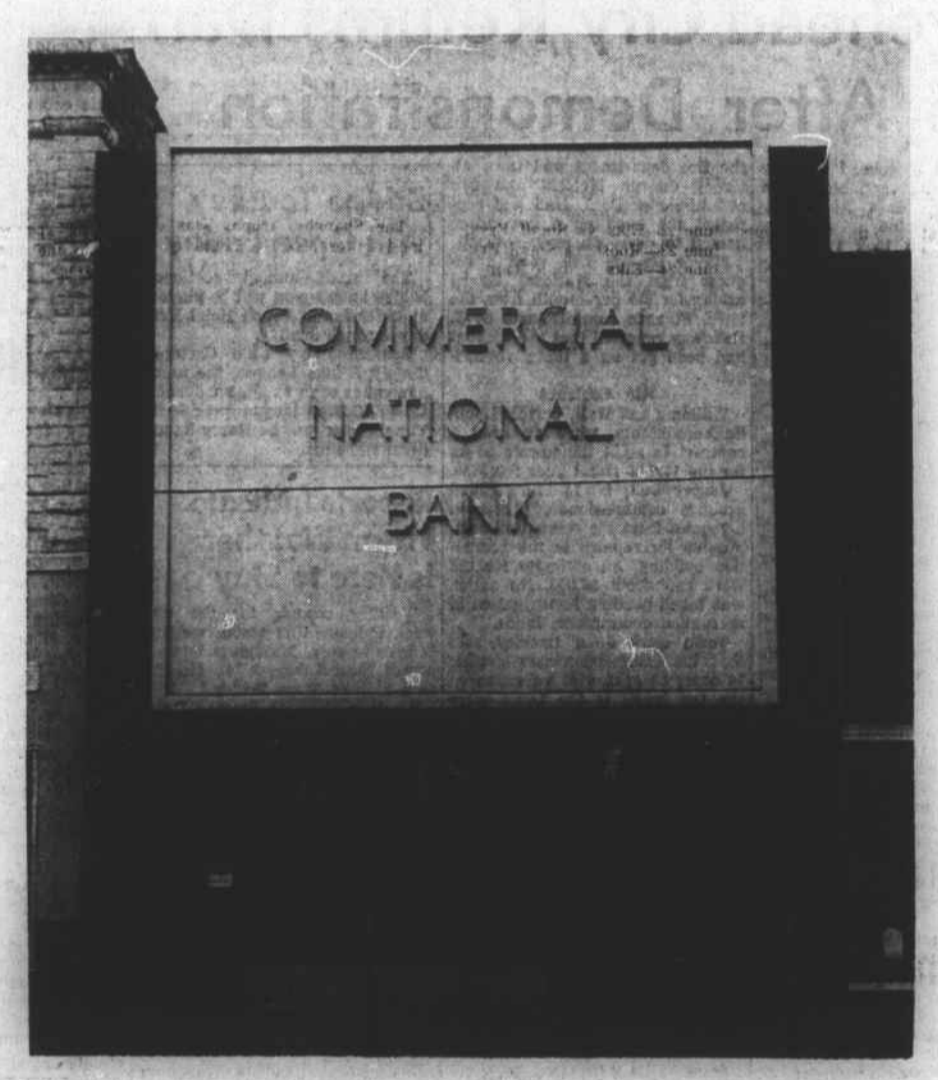
Mayor Dill said that he saw Senator Sam Ervin at the state Democratic Convention at Raleigh last week before. "Senator Ervin told me that there is a possibility that funds will be available after the end of this fiscal year for change improvements at state port," mayor reported.

The bill was to have been presented by the late Sen. Kerr Scott, who died before he had a chance to put it on the floor. Senator Ervin thinks that the bill may be introduced by another senator and get through before the end of the current session.

Washed Ashore

Herbert Morris, Princeton, N. C. and two companions got too close to the shore in their outboard motorboat Sunday and a wave washed them up on the beach. The Coast Guard was called and Taft Pilcher and Norvie Gillikin put the outboard on the truck, carried it to the sound side and helped the men put it back in the water.

Banking Facilities? The BEST!



FOR THE BEST VACATION WE WELCOME EVERYONE TO CARTERET COUNTY

For the best fishing, the best beach, the best swimming, the best climate, the best boating, the best shopping, meet the best people in the world, and for the best banking facilities, make Commercial your banking headquarters while you're here.

Commercial National Bank

MOREHEAD CITY • SEA LEVEL
MEMBER
FEDERAL DEPOSIT INSURANCE CORPORATION
FEDERAL RESERVE SYSTEM

I am a candidate for Coroner of Carteret County, Primary May 31st, 1958. Your vote will be appreciated.
Signed
W. David Munden

Oiling The Wheels Of Progress...

Yes, it is our job to keep the wheels rolling, the boats moving and the home fires burning, and there's no better way of doing this than by supplying you with Sinclair gasoline and oil and lubricants for your car, truck or ship, and Sinclair fuel oil for your heater or furnace or tobacco barn. When you buy Sinclair you are buying the best, and each sale we make gives us the feeling that we are helping contribute to the progress of our community.

T. T. "Tom" Potter & Son

MARKETER
Drive With Care — Use Sinclair
Beaufort 2-4726 PHONES Morehead City 8-3218
Morehead City, N. C.

SINCLAIR REFINING CO.

Court

(Continued from Page 1)

after his license was suspended. He was given a six-month sentence suspended on payment of \$215 and court costs.

James Oscar Chapman was found guilty on two counts of public drunkenness and given 30 days in jail, to work on the streets.

Charge Amended
A charge of drunken driving, against Frank Lawson Powell Jr. was amended to careless and reckless driving to which Powell pleaded guilty. He was ordered to surrender his driver's license for 30 days, pay \$100 and court costs.

Gene C. Norris and Archie Green Jr. each were given 30 days suspended on payment of \$25 and court costs. They were found guilty of forcible trespass. The charge was amended from crime against nature.

The \$300 bond posted by Alfred Haven Brant, charged with his third count of driving after his license was suspended, was forfeited when he failed to appear.

Bonds Forfeited
Others who forfeited bond were Gordon B. Best, improper muffler; Arthur Carroll Taylor, speeding; James Gregory Allen, public drunkenness.

Macon Ennett Jr. paid court costs on a charge of having an improper muffler. The court ordered that the case against Charles Dunn, charged with public drunkenness, be removed from the docket.

Cases against the following were continued: D. J. Graham, Harry Morris, Daniel B. Afford, J. E. Howard, and Richard Gillikin.

To Sell Peppies
The Morehead City American Legion auxiliary will sell peppies Saturday in downtown Morehead City. Proceeds will go toward veterans hospitals.