

TRY



SEARS CATALOG SALES

For All Home Improvement Needs

SEARS
Catalog Sales Office
Phone 6-1104
915 Arendell St.
Morehead City

Statistics

House of The Week design X-16 has a total of eight rooms, including four bedrooms, plus two baths, two lavatories and two shower rooms.

There are 1,367 square feet in the living and bedroom levels and 767 square feet in the entrance level. The overall dimensions of the house, including the attached garage, are 33 by 80 feet 9 inches. A minimum lot 100 by 100 feet is recommended although a larger lot would be desirable. There is a basement under the dining-living-kitchen area.

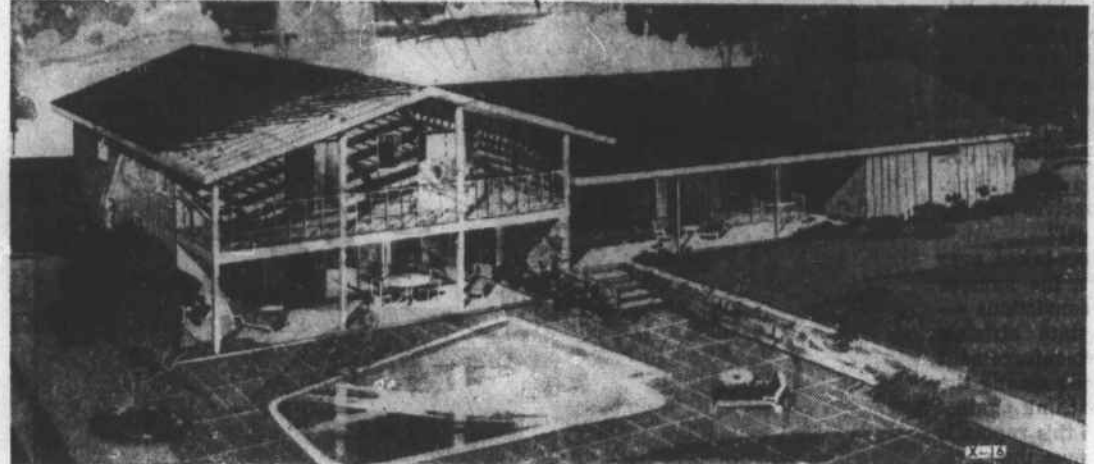
Man Fails to Get Friends Out of Jail, Joins Them

Cushing (AP) — When Ulysses Tippet learned three of his weekend guests were arrested for public intoxication after leaving his home, he felt he had to be the perfect host and got enough money to post bond.

When he appeared at police headquarters, police asked him to join his friends. He was charged with public intoxication.

The House of the Week

Pool, Sun Deck Add Lively Note to Split Level Plan



This rear view takes in the swimming pool, the cabana lounge, the rail-enclosed sun deck, the rear porch and the garden. The bedroom wing lies just forward from the sundeck. The living and dining rooms are just inside the rear porch.

By JOHN O. B. WALLACE

A swimming pool, complemented by sun deck, cabana lounge porch and a rear garden, makes this House of The Week a sure winner with outdoor living enthusiasts.

As refreshing as a cool breeze at this time of the year, the plan has three main levels, each with its own specific design features to take advantage of the pool and its surrounding area.

Designated X-16 in the House of The Week series, the plan combines ranch styling with split level room arrangement. The pool is one of its many features.

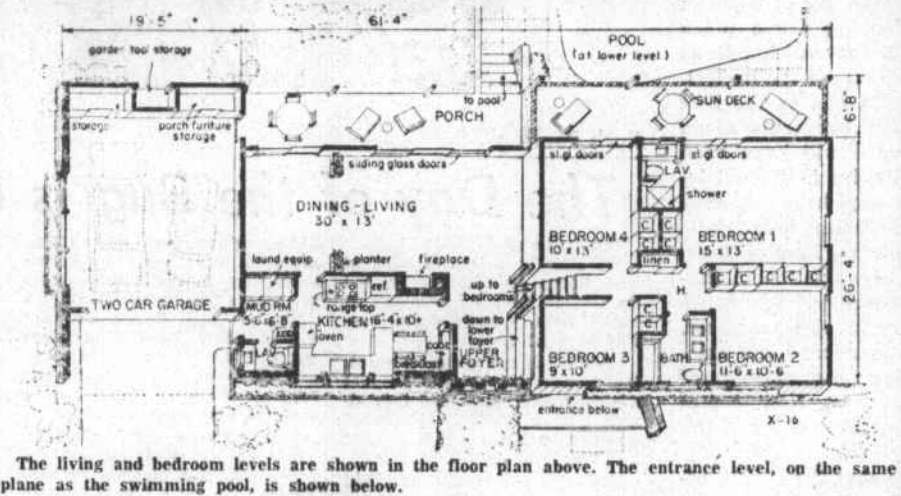
The three levels work toward the outdoor living theme in this way:

The entrance, or pool level, has a terrace-family room with a wide open view of the pool. A sheltered cabana lounge is directly outside.

The dining-living room level has glass doors opening onto a porch with steps leading down to the pool area. The porch itself looks out on an expansive garden.

The bedroom level has its two main bedrooms to the rear and they have sliding glass doors which open onto a sun deck. The sun deck overlooks the pool from above.

Throughout the house, Architect Rudolph A. Matern has overlooked no detail that would contribute to comfortable living the year round.



The living and bedroom levels are shown in the floor plan above. The entrance level, on the same plane as the swimming pool, is shown below.

A Span of 30 Feet

The dining-living area is formed by in-line rooms with a 30-foot-long open space. The rooms are divided by low planters.

A fireplace is located here and the back of its chimney provides a brick wall for the kitchen. There is direct access to both the dining and living rooms from the kitchen.

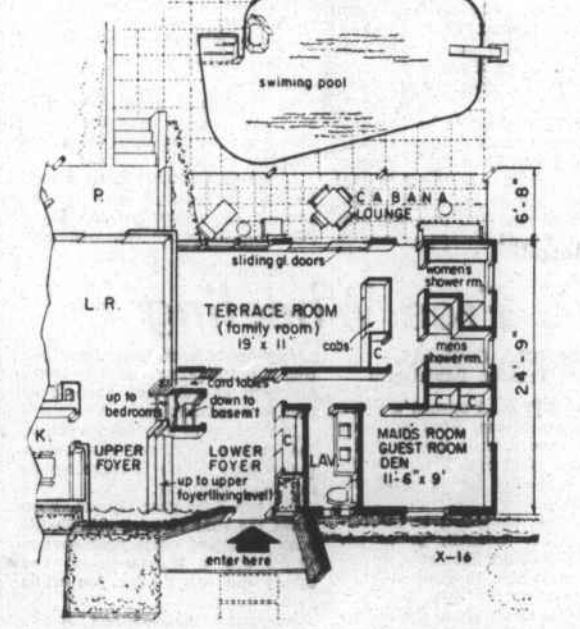
One end of the kitchen opens into the foyer which is just five steps up a six-foot-wide staircase from the entrance foyer.

The bedroom steps lead from the upper foyer level.

Directly below the bedroom wing is the entrance level with a terrace-family room and a room which may be used as a maid's room, a guest room or a den.

The terrace-family room has a tiled concrete floor and directly to its right are two shower rooms, one for women and one for men. A lavatory also is located on this level. The cabana lounge lies between this area and the swimming pool.

The pool, itself, has been given an interesting shape, modernistic in its treatment. Because of its irregular contour, either poured or sprayed concrete may be used in its construction.



Rail-Enclosed Sun Deck

The roof over the sun deck is open and latticed. The sun deck is surrounded by a white iron rail. Haed, scored concrete has been used for the floor of the porch, the cabana lounge and the area surrounding the pool.

There is a half-height side light to provide light for the lower foyer—and the front kitchen has a large bay window. The garage has a cathedral-type sash with a planter box below.

Likewise adding to the exterior are shutters, brick planters and angled, gable overhangs. The chimney is of brick and asphalt shingles are used for the roof.

The entrance foyer is 9 by 12 feet in size, and guests standing here

Send This Coupon

THE NEWS-TIMES

Enclosed is 25 cents. Please send me a copy of the study plan for The House of the Week, Design X-16

NAME _____ (Please Print)

STREET _____

CITY _____ STATE _____

You can take this study plan to your bank or other mortgage lender and to your builder and get rough estimates on the cost of construction in this area, as well as an idea of the relation of the cost to your budget.

With this information you will know whether you will want to proceed with construction by ordering working blueprints direct from the architect and asking for bids for the work.

You can get a study plan for The House of the Week by filling in your name and address on the coupon on this page and sending it with 25 cents to this newspaper.

This study plan shows each floor of the house together with each of the four elevations, front, rear and sides of the house. It is scaled at 1/4-inch per foot. It includes a guide on "How to Get Your Home Built."

Jackson Hole, Wyo., where the Grand Teton National Park is located, has a rim of mountains which rise as high as 13,000 feet.

USCG Reports Rise in Number Of Rescue Calls

The Fifth Coast Guard District Rescue Coordination Center appeared headed for another record-breaking year as assistance cases for the first half of 1958 totaled 1,153, which was 62 above the previous high set in 1957.

In releasing these figures today, Rear Admiral H. C. Moore, Commander of the Fifth Coast Guard District, indicated that the first six months of 1957 had, in turn, been approximately 40 per cent higher than the first half of 1956, and that the trend was toward a continued climb.

A contributing factor to the 1958 rise was the unusually serious ice conditions in February which led to 73 calls for assistance by ice-bound shipping in the Fifth District area of Virginia, North Carolina, Maryland and the District of Columbia.

The primary cause, however, was the increasing use of the waterways by recreational boaters.

Talk Over Your Home Improvements With Us!

We can help you solve your improvement problems through personal loans, refinancing of present loans.

You can make your home a healthier, more pleasant living place. "It's easier to repair than replace."

Commercial National Bank
Morehead City • Sea Level

BUILDING SUPPLIES

Morehead Builders Supply Co.
Highway 70-A Phone 6-3059 Morehead City

The Little Nine of Morehead City, Inc.

N. 18th Street Morehead City
Phone 6-5454

Offers professional Landscaping Service, including fill dirt, top soil, seeding, fertilizing, liming, spraying and mowing. Manure also available. We specialize and are experts in establishing and maintaining lawns.

No job too big or too small.
Phone 6-5454 Nights until 10 P.M. 6-5359

for healthier families...

... keep them comfortably happy in a home where it's always "Spring" ... where WILLIAMSON WETHERMATIC Year-round Air Conditioning prevents summer sweating and wintery chills. Phone today for a FREE Room Comfort Survey.

Byrd Metal Works
N. 28th St. Phone 6-3328 Morehead City

REDDY MIX by DAVE LINDSAY

OH, YOU POOR DEAR! MY HUSBAND HEARD YOUR BEGGING THAT HE BEAT YOU UP EVERY MORNING!

YOU MEAN HE SERVED YOU RIGHT! HE BEAT YOU UP EVERY MORNING TO MAKE YOU COFFEE!

HE DOESN'T STRIKE ME, HE BEATS ME UP EVERY MORNING TO MAKE MY COFFEE!

CHECK UP ON THE WONDERFUL SERVICE CARTERET CONCRETE CO.

HAVE FOR YOUR CONVENIENCE ITS TOPPS!

CARTERET CONCRETE CO.

Call 6-4859 Certified READY MIXED CONCRETE HIGHWAY 70 W. Morehead City

BEAUTIFY FLOORS IN A FLASH!

do it yourself... save money!

Why have dull, worn-looking floors? Just use our Clarke rental floor equipment to give your floors like-new brilliance! We provide everything you need and full, easy instructions.

phone for your Clarke rental equipment today!

BEAUFORT HARDWARE CO., INC.
Merrill Bldg. Phone 2-4686 Beaufort, N. C.

BEAUTIFUL WALLS OF CONCRETE MASONRY

Exposed concrete block walls add beauty... modern design to today's finest homes... and at the same time save you dollars and dollars on expensive interior finishing... and upkeep. Masonry paints are now available in many beautiful decorator colors... for complete harmony of masonry walls and other interior and exterior decorations. For quality block... precision made on Stearns equipment... see us today.

USE CONCRETE MASONRY FOR STRUCTURAL BEAUTY

MOREHEAD BLOCK & TILE CO., INC.
Phone 6-3970
NEW BERN HIGHWAY MOREHEAD CITY, N. C.

CHAINED TO KITCHEN CHORES?

BOUND TO WORK?

SHACKLED BY SHOPPING?

Free Yourself with a Freezer!

Whether you're chained, bound or shackled, like those busy homemakers above, take the freezer way out. Free yourself from extra time, work and worry with the care-free convenience of an electric freezer.

Unexpected company? — No time to shop? — Meal monotony got you down? ... please madam, no tears. Just take a quick "cook's tour" of that frost-tipped food store you'll find in your freezer.

At your fingertips and fresh as the dew are scores of meals ready to lend spice and variety to any menu. You're pickin' pretty from flavor-fresh foods to cook, heat, or thaw and eat.

Growing season's here. A tasty time to take it easier the freezer way. Visit your electric dealer's display of electric freezers and refrigerator-freezers. See for yourself how you can free yourself with the care-free convenience of an electric freezer. Why not do just that, this week?

CAROLINA POWER & LIGHT COMPANY