

# STORM HELENE CAME A-HELLIN'



Warned of the approaching storm, many boat owners ran their craft into Pelletier Creek, a protected harbor at Cannon's Boatworks west of Morehead City. This shot was taken from the mast of the Flevo, some 50 feet above the surface of the water. Captain of the Flevo is Arved Rosing.



Furniture sat out in the rain and winds after this house on Cedar Street, Beaufort, collapsed. The house was occupied by Mrs. Ida Gose.



Atlantic coach Roy Cockerham scratches his head as he tries to figure out a place for his basketball teams to practice. He is standing by the sheet metal roof that blew off the gym.

Photos by Bob Seymour

ALL WHO READ  
READ  
THE NEWS-TIMES

## CARTERET COUNTY NEWS-TIMES

10¢

47th YEAR, NO. 78.

TWO SECTIONS TWELVE PAGES

MOREHEAD CITY AND BEAUFORT, NORTH CAROLINA

TUESDAY, SEPTEMBER 30, 1958

PUBLISHED TUESDAYS AND FRIDAYS



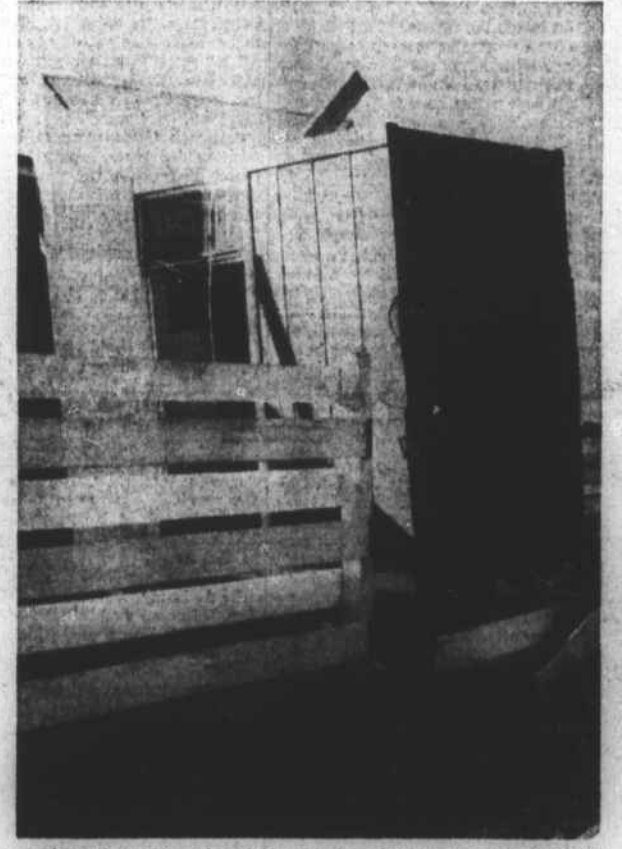
Boats moored along the thoroughfare between Cedar Island and Atlantic fared pretty well during Helene. These boats, seemingly on dry land, are in deep water. Dead marsh grass was floated across the road and is one to three feet thick on top of the water. The road was blocked for a time by the marsh grass, at some places 4 feet deep on the hard surface.

### Pole Bows to Helene



This telephone pole is one of a string of six poles blown over or broken off along the railroad track near Camp Glenn. The fallen lines had to be repaired before trains could get through.

### Perched Too High



Although used to a lot of air, this broadcast booth atop Dom-EI's at the beach couldn't quite take what Helene breathed out. It toppled to the ground, crashing on top of a fence.

### Smilin' Through



Lillie Grace Herbert and Iva Faye Hill, pretty Beaufort High School students, pull a "dress alike" act and show the proper gear to wear while out scouting a hurricane.

### Boat Piles on Porch



Mrs. Clayton Fulcher Jr. sits on the bottom of a skiff that washed up on the porch of her Driftwood Motel at Cedar Island. The interior of the motel was not damaged except where a leak in the roof let the rains flood one apartment.



Thousands of dollars of damage was caused to the Freeman Wholesale Co. when the roof blew off between 3 and 3:30 p.m. Saturday. Rain then caused more loss by wetting the merchandise stored inside. Part of the concrete block wall collapsed on the west side, shown above, and landed on top of a box car.

More  
HURRICANE  
HELENE  
Pictures  
On Other Pages  
This Issue

### Tide Table

(Eastern Standard Time)

Tides at the Beaufort Bar

HIGH	LOW
Tuesday, Sept. 30	
9:31 a.m.	3:29 a.m.
9:44 p.m.	3:54 p.m.
Wednesday, Oct. 1	
10:02 a.m.	3:55 a.m.
10:16 p.m.	4:25 p.m.
Thursday, Oct. 2	
10:31 a.m.	4:17 a.m.
10:50 p.m.	4:55 p.m.
Friday, Oct. 3	
11:06 a.m.	4:38 a.m.
11:33 p.m.	5:28 p.m.