

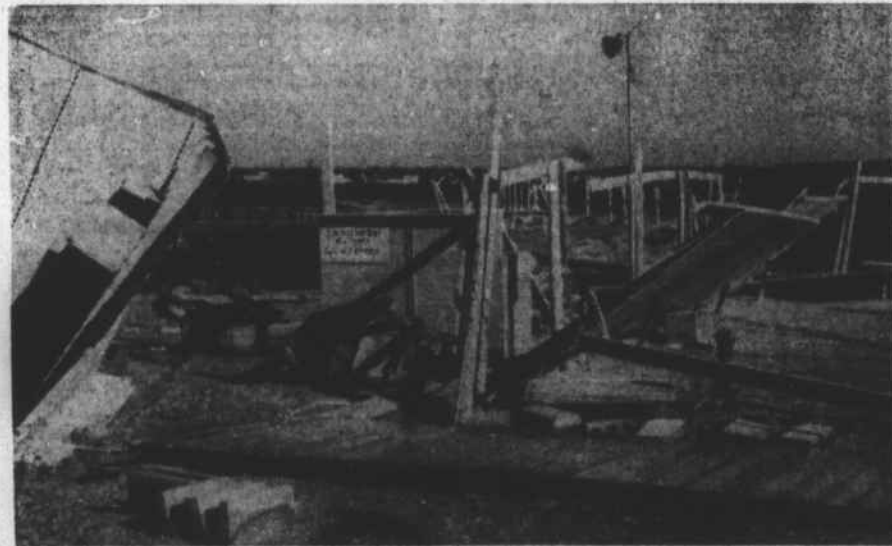
# Helene Left Scars Where She Raked Through County



Half of this Danco sign withstood the fury of Helene's winds but the other half, lower left, collapsed Saturday afternoon. This sign is on US 70 near Mansfield Park.



This group of children and others from Salter Path spent Saturday night in the Morehead City municipal building. Salter Path was deserted when hurricane Helene ripped through.



A. B. Cooper's porpoise pool at Atlantic Beach managed to hold its own during Helene but the fence and ticket booth were demolished. Micky, the porpoise, weathered the storm in good condition.



This garage in the yard of Harvey Taylor, Sea Level, lost a good part of its roof during hurricane Helene. In addition to losing its roof, the garage was flooded with several inches of water.

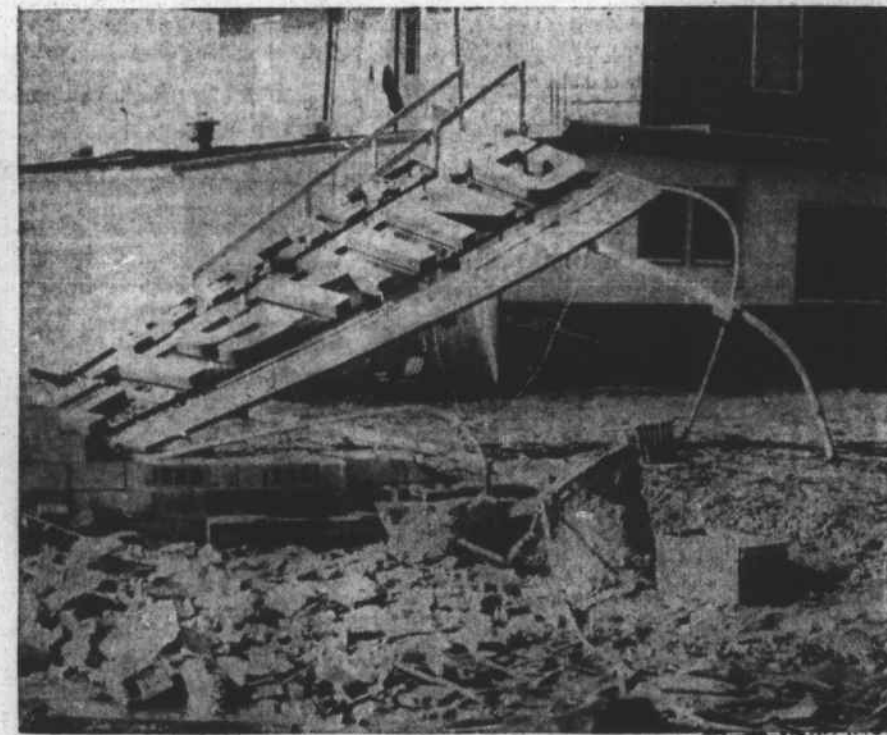


Two of the storm refugees at Graham Harden School, Havelock, were Mrs. Juvenile Bradford, left, and Mrs. Laura Smith, 67, Salter Path. Mrs. Smith was the oldest refugee at the shelter. Mrs. Bradford, who is recuperating from a broken leg, was the first to arrive.



Photos by Bob Seymour

A. B. Roberts, right, and Robert Freeman examine damaged groceries in W. P. Freeman Wholesale Grocery warehouse, Morehead City. Hurricane Helene ripped about half of the roof off the cement block building. Sky is showing through at the top of the picture where the roof used to be.



The Carolina Queen sign at Fleming's on the Atlantic Beach Causeway was wrecked by Helene's high winds. The heavy metal pipes that held the sign bent to the ground under the force of the wind.



Art Taylor, 212 Mansfield Parkway, clears his front yard and burns the green pine limbs. White smoke from similar fires could be seen at many points along the parkway Sunday and Monday.



Jimmy Wallace takes a look at some rain-soaked crackers that were stored under the section of roof that blew off the Freeman warehouse during the storm. Mr. Wallace, outlined against the sky, is standing in the east side of the building.



This six-car garage collapsed under the fury of Helene's high winds Saturday. The garage served families at Bogue Sound Shores near Gales Creek. The sound is in the background. There were no cars in the garage since a neighbor had warned all the auto owners that the garage was about to fall.

## After-Notes on Helene

Mrs. Ikie Guthrie, Marshallberg, suffered several cuts on her face during Helene Saturday afternoon when a window pane in a door blew out. Mrs. Guthrie had just closed the door when the glass shattered. That she escaped more serious injury is attributed to the fact that her face was slightly turned when the glass flew.

Damage at Marshallberg has been estimated at \$50,000. Percy Davis lost part of the end of his fish house. Part of the roof of M. W. Willis boat works blew off.

The roof of Willis boatworks at Williston was partly taken off and new boats damaged.

At Gloucester the chimney on the home of Miss Josie Pigott was blown down. A roof of a barn on Walter Stewart's place blew off and many trees went down.

Quite a few of the persons who took refuge in shelters brought their own food and blankets, for which shelter chairmen were most thankful.

In charge of the shelters were Ramie Davis, Camp Glenn School; S. R. McLendon, W. S. King School; Mrs. Leonard Lewis, Morehead City municipal building; Alonzo Simpson, Beaufort courthouse; and Randolph Johnson, Queen Street School.

The Rev. John Cline, president of the County Ministers Association, by radio requested ministers to keep churches open in case they were needed as shelters.

Carteret-Craven Electric Membership Corp. had two extra crews in from Asheboro, one from Goldsboro with two trucks and a tree cutting crew. W. C. Carlton, manager, reported no trouble from high water except at Cedar Island.

Guards were so diligent in keeping people away from the beach during the storm that S. A. (Red) Horton, who operates the water works there, was not allowed across the bridge. Mayor George Dill, Morehead City, wrote an "official pass" for him and he finally got there.

Constable George Smith, Morehead township, who lives at Atlantic Beach, drove into a high tension wire in the darkness and whirling rain. Fortunately, the power was off.

Beach causeway, lost all its dressing rooms, and most of the fence, though braced, blew down. Damage is partially covered by insurance, according to A. B. Cooper, owner.

In accordance with a request by Mayor George Dill, Gen. Capus Waynick, North Carolina National Guard, issued the order calling the Morehead City National Guard unit to active duty.

Planes at Cherry Point were flown inland prior to the storm. One hundred thirty persons took refuge in the Graham Barden School at Havelock where they were fed and shown movies. Women Marines took care of children. Lt. D. C. Hawkins, USMC, was in charge of the shelter.

State highway patrolmen were stationed at Atlantic and Smyrna to relay radio messages from the western part of the county to New Bern. New Bern could then relay messages back to Morehead City.

Girls at Carolina Power and Light were kept on duty around the clock to answer phone calls reporting difficulty (some phones were in operation throughout the storm).

CP&L had the following at work: J&L Construction Co. 3 crews, 19 men, 6 trucks and a trailer; Weeks and Andrews, 3 crews, 15 men, 6 trucks and trailer; CamCo Construction Co., 1 crew, 4 men, 1 truck and trailer; Stackhouse Construction Co., 2 crews, 11 men and 2 trucks; and Asplundh Tree Co., 4 crews, 16 men and 4 trucks, plus chippers which grind up the limbs after they're cut.

There were also two radio-equipped service trucks from Dillon and Florence, S. C. George Stovall, CP&L manager, reports that the company had its own radio repairman here, also the line operations department assistant from Wilmington.

Restaurants on the Morehead City waterfront say the only thing that prevented water from being waist-high inside their buildings was the switch of the wind to the north on high tide Saturday night.

The county was full of highway patrolmen during the storm, all of them called in to maintain a radio communications line from the eastern part of the county through to the west and upstate.