

R.B. Howard Names Men In Scout Finance Drive

R. B. Howard, Morehead City, chairman of the Boy Scout finance drive, has announced the following chairmen throughout the county:

George R. Wallace, special gifts; Hugh Styron, Atlantic; Stanley Potter and David Jones, Beaufort; Earl C. Davis, Harkers Island; Gordon Becton, Hartlowe; Charles D. Harris Jr., Marshfield.

Bud Dixon, Morehead City; Bob Montague and Wallace Hill, Newport; Headen Willis, Smyrna; Dolly Fulcher, Stacy; Lloyd M.

(Back) Pinott, Gloucester; Gerald Murdock, Wildwood; Elmer Dewey Willis, Williston.

Mr. Howard said that each of the above chairmen will be calling on other volunteer workers. The campaign officially starts today. He said that he hoped each worker would work willingly and with enthusiasm.

Though Carteret has increased its contribution to the Boy Scout movement considerably over the past few years, it still has not paid its way, Mr. Howard points out. Other counties in the East Caro-

Send This Coupon

THE NEWS-TIMES
Enclosed is 25 cents. Please send me a copy of the study plan for The House of the Week, Design T-305

NAME _____
(Please Print)

STREET _____

CITY _____ STATE _____

You can take this study plan to your bank or other mortgage lender and to your builder and get rough estimates on the cost of construction in this area, as well as an idea of the relation of the cost to your budget.

With this information you will know whether you will want to proceed with construction by ordering working blueprints direct

from the architect and asking for bids for the work.

You can get a study plan for The House of the Week by filling in your name and address on the coupon on this page and sending it with 25 cents to this newspaper.

This study plan shows each floor of the house together with each of the four elevations, front, rear and sides of the house. It is scaled at 1/4-inch per foot. It includes a guide on "How to Get Your Home Built."

Steel Industry Claims Thriving Competition

New York (AP)—The steel industry lays claim to a thriving competition.

To prove it, Steelways magazine lists the following figures: 33 steel companies making structural shapes; 64 turning out hot rolled bars; 44 producing cold finished bars; 59 making wire and wire products; 24 making cold rolled sheets; 63 making stainless steel.

lina Council have helped meet Carteret's expenses.

Scouting has grown steadily in the county over these years. According to council ratings, Carteret in 1955 was in ninth place among the 13 counties in the council; in 1956 it was in fifth place, in 1957 in second place and at present it stands first.

"These facts should be the necessary inspiration to each citizen of the county to subscribe to the movement," Mr. Howard said. "The cost of servicing each Scout is \$9.50 and we have over 500 Scouts. What is a boy worth? What is a good citizen worth? Is he not worth more than \$9.50 to you?"

The House of the Week

You Can Get Extra Space By Raising House in Rear



Ranch version of the popular split-level house represents a smart appearance.

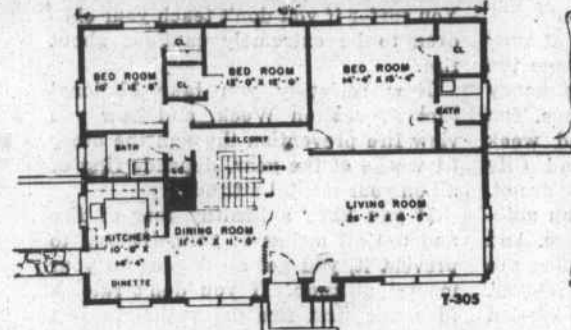
This House Should Fit on 75-Foot Lot

Overall dimensions of this house, Design T-305, are 48 1/2 by 34 feet. Allowing driveway and turning space on the opposite side, this house should fit on a 75-foot lot, depending on local zoning restrictions.

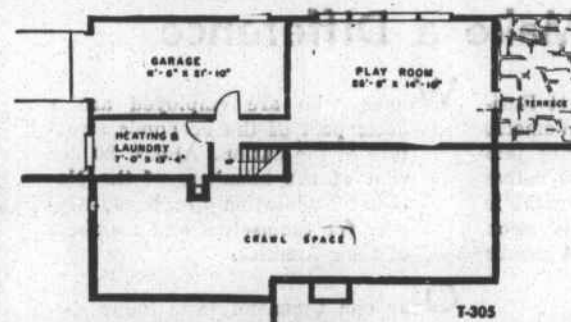
The house covers about 1,600 square feet.

UFO Watch

Alamogordo, N. M. (AP)—L. J. Lorenzen, director of an organization gathering information on unidentified flying objects, says this fall may show a heavy rash of sightings. Lorenzen is gathering volunteers to start a 24-hour watch on the skies for UFO's.



Main floor on the front of the house and bedrooms with balcony at the rear — this is how the plan works out.



Playroom and garage are on the ground level under the bedrooms. Retaining walls are shown at each end of house.

By DAVID G. BAREUTHER

A smart way to get more house for your money has been worked out in this new variation of tri-level design. It's a house with a one-story front and a two-story rear. The living room, dining room and kitchen floor is just midway between the two rear stories.

The innovation, shown here in Design T-305 for The House of the Week, gives you extra rooms economically. A simplified, sweeping roof, similar to the historic salt box roof, has no joists or complicated valleys.

This is a house to answer basement-versus-no-basement controversies. It elevates space that might have been used for a basement up to ground level.

It makes the garage part of the house instead of a separate building or wing. It gives you a large ground floor playroom opening out on a garden terrace. It provides a laundry that calls for no stair climbing to reach a drying yard.

The house has the advantages of a three-story house without having a full flight of stairs. Its floor levels are separated by only six steps. Yet it has no resemblance to the conventional split-level appearance of a cottage hitched to a two-story neighbor.

You enter the house at the living room-dining-kitchen level. Just half a flight up is a dramatic balcony at the bedroom level. Half a flight down from the living room is the garage entrance and playroom level.

There is no basement as such. A ventilated crawl space separates the living room floor and its joists and insulation from the earth. A seal over the ground in this space keeps out moisture.

Playroom and laundry are built on concrete slabs which can be paved with colorful asphalt tiles. The concrete floor of the garage needs no covering, unless you like deck enamel for appearances and ease of cleaning.

But—and this is something lots of people prefer—your bedrooms are upstairs, even though you have a ranch house front.

The general design of this house is especially attractive. Windows are large and numerous. Caleb Hornbostel and Associates, the architects, suggest a roof of colored wood shakes. The heavy hand split type of shakes, painted white, could be striking.

Center hall convenience is achieved in the plan without actual construction of a hallway. This results in an open merging of living room, dining room and balcony.

Rooms are large throughout the house. The living room measures more than 15 by 26 and has a ceiling rising to a story and a half. The kitchen is large enough for dinette space and is shaped for efficient "U" arrangement of cabinets and equipment. The dining room is screened from the front door by vertical baffles.

Three good sized bedrooms have walk-in closets. There are two bathrooms, one with a stall shower and both planned for modern vanity type lavatories.

The playroom downstairs is almost as large as the living room and is unbroken by columns. In fact, there are no lally columns in this house. Spans are planned to eliminate the need for such posts.

For economy a fireplace has been omitted, but it would be easy to accommodate one in or near the far corner of the living room with an outside chimney at that end of the house.

He Had A Right
Oklahoma City (AP)—A woman telephoned police that a man calmly backed his car up to a house trailer stored in her back yard, hooked up and drove off. A check by officers showed the man was from a finance company.

Concrete paved surfaces help boost farm profits



Studies prove that your stock will reach market size sooner, produce far more meat per bushel of feed when raised on clean and sanitary concrete.



On concrete the feed is eaten — not trampled into the mud. Energy that was wasted by wading in mud and mire is converted to added growth. Animals stay clean and healthy.



There are profits, too, in labor saved. Less time is needed to clean cows before milking. The back-breaking job of filling mudholes and grading the barnyard every year is eliminated. You will also profit through a substantial annual savings in valuable manure.

For details on how durable, economical concrete can help boost profits on your farm, just fill out and mail the coupon below.

-----PASTE COUPON ON BACK OF POSTCARD AND MAIL TODAY-----

PORTLAND CEMENT ASSOCIATION A national organization to improve and extend the use of portland cement and concrete through scientific research and engineering field work.

1401 State Planners Bank Bldg., Richmond 19, Va.

Please send booklet, (distributed only in U.S. and Canada, list subject): _____ Name _____

St. or R. No. _____

Post Office _____

Winter on the Way... Now is the Time For

INSULATION

Insulate your home for winter warmth and comfort. Insulation brings down fuel bills... actually pays for itself in a very short time. Be smart... be thrifty. Act now! You'll be glad you did when cold weather comes. See us for all your building supplies.

SAFRIT LUMBER CO.

Lenoxxville Road Phone PA 9-3541 Beaufort, N. C.

See Us For

Mechanical Tools

Carpenter Tools

WESTERN AUTO STORE

Morehead City

Worried about roof "blow off"... Come in and see the new Seal-O-Matic Shingles

HERE'S THE SECRET
The sun's heat seals the tabs automatically because of this special factory-applied petroleum resin cement strip on the underside of each shingle

These new Johns-Manville Shingles hold tight in high winds because they are self sealing!

Here is the most important contribution to roofs for homes and farm buildings in the last 50 years... a roof of traditional shingle design that is self sealing. The sun's heat causes these amazing shingles to seal themselves down at the butt edge and grip the shingles underneath with bulldog tenacity... they defy even high winds to pry them loose. Seal-O-Matic Shingles are available in the popular Thick Butt style in many colors and blends. Stop in and let us demonstrate them to you. Ask for a free estimate.

JOHNS-MANVILLE BUILDING MATERIALS

DORIC CERAMIC WALL TILE LASTS A LIFETIME

For the kitchen, bathroom, sinktops and floors; each wall tile has spacer lugs at the edges that automatically sets tile even distance apart, tough, glazed surface. Our first quality 75¢ per sq. ft. For hotels and extra bath, our second quality, 67¢ per sq. ft.

Complete selection of the trim pieces, wall floor tile mastic, special spreaders and joint grout. You don't have to be a professional to install Doric tile.

SPECIAL WHILE THEY LAST

30-Gallon Table Top Water Heaters Only \$75.00

F&W Water Pump 600 Gallons Per Hour 12-Gallon Tank — Model BL Only \$75.00

42" Sink Base With Cast Iron Sink Less Fixtures Only \$60.70

4' x 4' Tile Board Choice of Colors Only \$4.70 Per Sheet

Warm Air Heating System 84,000 BTU Co. Flo Furnace with Pipe and Defuses for Six Warm Air Outlets. Only \$339.23 Or \$10.67 Per Month On Approved Credit

Formica For Table Tops Choice of Colors. Full Size Sheet Only 54¢ Sq. Ft.

42" Cast Iron Sink Only \$31.55 Cash Price

Close Coupled Commode Complete to Floor \$30.05 Cash Price

We Also Carry a Complete Line of Warm Air Heating Systems

TRY

SEARS CATALOG SALES

For All Home Improvement Needs

SEARS Catalog Sales Office
Phone PA 6-5181
215 Archway St.
Morehead City

All Prices Are Subject to N. C. Sales Tax

HUNTLEY'S

Phone PAk 9-4467

HIGHWAY 16 EAST BEAUFORT, N. C.

HIGHEST QUALITY

LOWEST PRICES