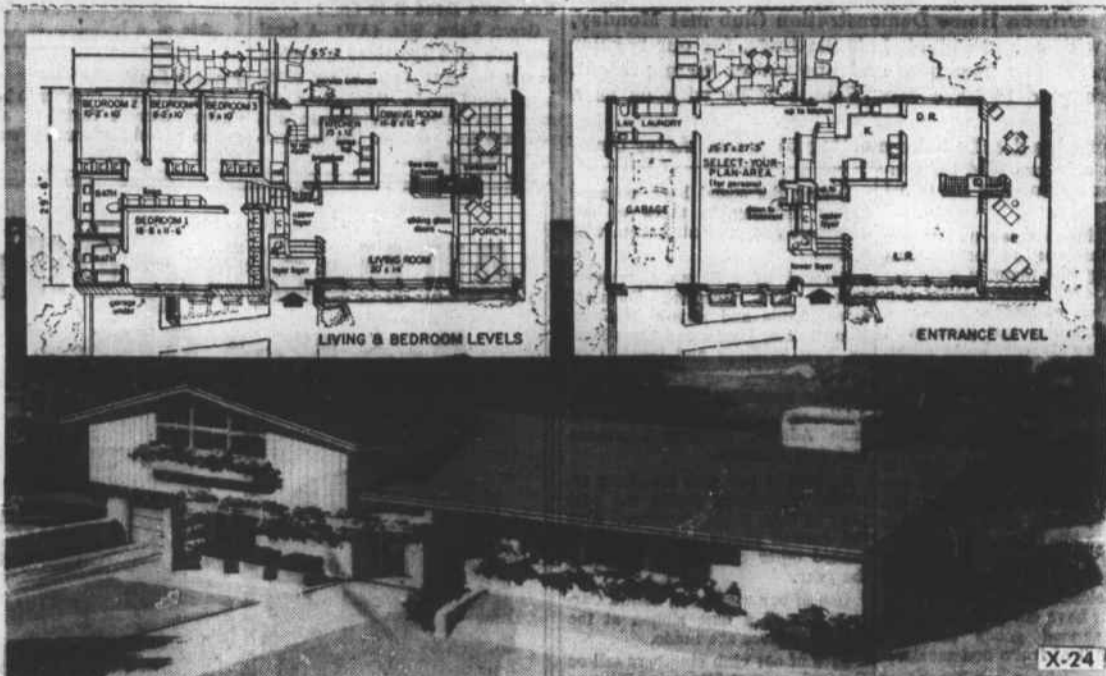


The House of the Week

This Plan Features 'Fluid' Area Adaptable to Any Need



This ranch-type split will fit the personality of any owner because it has a large select-your-plan area adaptable to the special needs of any individual.

The basement is under the area occupied by living and dining rooms and kitchen.

By JOHN O. B. WALLACE

Houses should have a personality all their own, too. This happy state of affairs is seldom realized except in the expensive custom-built dwellings...

Designed by a noted American architect and designated X-24 in the "House of the Week" series, it is a "personality house" in the sense it was created to fit a wide variety of contrary needs and tastes.

Its chief feature is a large entrance-level room — more than 400 square feet in area. This space can be adapted to many purposes according to the needs, temperament and personality of the owner.

The architect, Rudolph A. Marten, says: "I wanted to design a home in which there is a large area—easily accessible to the outdoors and other parts of the house—that could be used or arranged according to the personal requirements of the individual owners."

"The basic living requirements can be designated into a home to satisfy the population in general. But all individuals live differently and have their own special needs."

"The select-your-plan area in House of the Week design X-24 gives each owner the opportunity to build his own special needs into a basic, well-designed home."

Here are complete details of this plan in an easy-to-follow, area-by-area description:

The Living Area: Nearly square in shape this area includes the 14 by 20 foot front living room and the dining room. The living room has banks of glass on two walls, one of which is formed by sliding glass doors leading to an adjacent porch.

A through, two-way fireplace serves as a separation between the living and dining rooms. The outside extension of this fireplace becomes a barbecue grill on the covered porch at the right. The dining room opens directly onto this porch through sliding glass doors.

The Sleeping Area: There are four bedrooms and two baths in the sleeping wing which is separated from the living level by eight steps. Both baths are of the "Hollywood" type with built-in vanities and planters.

The master bedroom, 18 feet 8 inches by 11 feet 6 inches, has its own private bath. There is a cathedral-type window at the front

of the master bedroom, with a long planter box outside.

The kitchen, at the rear of the house and adjoining the dining room, has the appearance of being a balconied kitchen because of its connection with the lower, adjoining level.

There are no partitions to detract from this feeling of openness. A rear service entrance is near the foot of the four steps at the back of the kitchen. The kitchen, an ample 15 by 12 feet, has space for a four-chair breakfast table.

Laundry facilities and a lavatory are on the lower level and handy near the kitchen. The heating plant and the utilities are in the basement.

The porch at the right is covered by the extending roof, is enclosed on two sides by brick walls and runs the full depth of the house. There is a rear terrace off the lower level.

Storage Statistics: In the bedroom wing alone there are 12 closets and a five-unit bank of linen closets. A full basement lies under the living area.

The garage is under the bedroom wing at the left. There are large storage closets in both the lower and upper floors.

The select-your-plan area is 15 feet 3 inches wide and extends the full depth of the house, 27 feet 5 inches. There are stairs from this area to the basement. A lavatory is only a step away. Its possible arrangements are numerous.

The front part could become an office and the rear a family room. Other possibilities include a doctor's or professional suite, shop, dark room, maid's room, recreation room, den, hobby room, guest room, a fifth bedroom—or even a rental apartment.

The Exterior: Brick and vertical boards are used in combination on all outside walls. The twin-door front entrance is recessed in masonry and protected overhead by a flat deck. A pierced masonry wall, planters and an angled trellis add decorative touches. The roof is of asphalt shingles. The chimney is brick with a concrete smoke cap above the flues.

Dimensional Data: Overall dimensions are 65 feet 2 inches by 29 feet 6 inches. A minimum lot of 90 by 100 feet is recommended.

There are 1,585 square feet in the living and bedroom levels and 341 square feet in the entrance level. The garage has 286 square feet. There are eight rooms, including four bedrooms, and 2 1/2 baths.

Just Thinking

Four Students Write Poems

By TUCKER R. LITTLETON Beaufort Faculty Member

Though the readers of this column may have profited nothing, our students have at least been given some incentive for creative writing, as is testified by the many poems this time.

The first poem, Life's Troubles, was written by one of our juniors, Mollie Thomas. The second poem, Mist, was written by Jackie Wheatley, one of our seniors. Joyce Sewell, another of our seniors, wrote the third poem, Life. The last four poems were written by a student who still wishes the name withheld.

Life's Troubles: Never a sorrow, never a care, Never a worry to make grey hair— Yes, that's me through and through!

Mist: The midnight sky is dark and bleak; The air is filled with chills. In the thin moonlight, so far away The mist rolls over the hills.

My Fate: Outside—the night black! And suddenly a face appeared At my window in silhouette. I started. Was this the face of my fate? —Name withheld by request

My Season: Autumn is my time of year—if not spring. Corn stalks standing in the brown fields, left to dry, And on the ground at their feet, ripe pumpkins orange.

Sea Breezes: From my patio the wind blows bringing the wet, sweet smell of the sea to me from a great distance.

It smothers the small and delicate plants And animals as it goes by. It creeps through the woodlands sleep And drifts across the sky.

It fills each valley from end to end As though it were a dent With softest, sweetest angel dew That must be heaven-sent.

It goes away when the sun appears And will not come again Until the moon is high above And the clouds are filled with rain. —Jackie Wheatley

Life: Life to me is just a journey Through a field of joy and pain— Days when hopes are well worth hoping Days when dreams are dreams in vain,

Offtimes standing at the crossroads, Roads that lead to Who-knows-where, Down through lands of joy and gladness Or through vales of vain despair.

Yet I walk with faith, just trusting That when all of life is done All my paths will merge together Leading to my setting sun. —Joyce Sewell

My Fate: Outside—the night black! And suddenly a face appeared At my window in silhouette. I started. Was this the face of my fate? —Name withheld by request

My Season: Autumn is my time of year—if not spring. Corn stalks standing in the brown fields, left to dry, And on the ground at their feet, ripe pumpkins orange.

Sea Breezes: From my patio the wind blows bringing the wet, sweet smell of the sea to me from a great distance.

Pencil Draws 35-Mile Line; Like to Try It?

New York (AP)—A plain old ordinary seven-inch pencil will draw a line 35 miles long before you run out of lead and begin scraping your knuckles.

The pencil industry turns out 1 1/2 billion pencils a year, enough to draw a line 52 1/2 billion miles long or two million times around the earth.

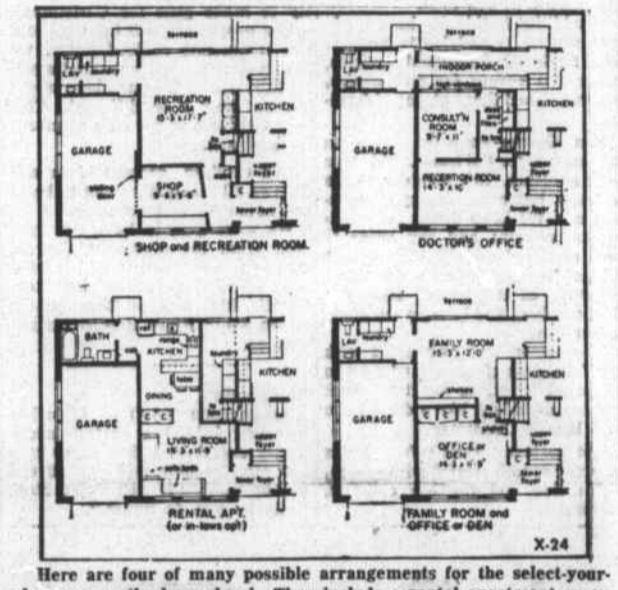
That's just a sample of some of the facts and figures that the pencil people's statisticians have calculated (with a pencil, of course) to amaze us ordinary users.

For instance: There are 350 different kinds of pencils made in the United States in 19 different degrees of hardness. They come in 72 different shades and colors, including the ever-popular yellow.

They range in design from the large round ones for little children, who like to grasp them like a broom handle, to the precise hard lead jobs used by engineers and architects.

Pencils are scarce in many parts of the world but in the United States each of us uses an average of nine per year — and that includes those that are chewed and tapped on desks.

But there's one thing the statisticians haven't figured out. If there are that many pencils kicking around, why is it so many telephone conversations open with the words: "Wait a minute. Wait until I find a pencil."



Here are four of many possible arrangements for the select-your-plan area on the lower level. They include a rental apartment or an apartment for older relatives.

Send This Coupon

Coupon form for requesting a copy of the study plan for House of the Week, Design X-24. Fields include Name, Street, City, and State.

You can take this study plan to your bank or other mortgage lender and to your builder and get rough estimates on the cost of construction in this area, as well as an idea of the relation of the cost to your budget.

With this information you will know whether you will want to proceed with construction by ordering working blueprints direct from the architect and asking for bids for the work.

You can get a study plan for The House of the Week by filling in your name and address on the coupon on this page and sending it with 35 cents to this newspaper.

This study plan shows each floor of the house together with each of the four elevations, front, rear and sides of the house. It is scaled at 1/4-inch per

foot. It includes a guide on "How to Get Your Home Built."



CONCRETE MASONRY

ATTRACTIVE INEXPENSIVE PERMANENT

Easy to lay, long lasting, and attractive concrete masonry blocks are the ideal material for building steps, terraces, and patios... especially for the "DO-IT-YOURSELF" fan of today.

DO IT TODAY—THE CONCRETE MASONRY WAY MOREHEAD BLOCK & TILE CO., INC. Phone PA 6-3970 NEW BERN HIGHWAY MOREHEAD CITY, N. C.

California BOUND Letter

Winds up at Guam Island. McAlester, Okla. (AP) — Mrs. Don B. King mailed a letter to friends in California and it wound up in Guam. The post-office reported the missive somehow stuck to the back of another letter written by a McAlester resident to her sister on Guam.

Advertisement for Fred Harvey Old Floor Refinishing and All Kinds of Tile Work. Phone PA 8-4200 Beaufort, N. C.

REDDY MIX by DAVE LINDSAY



Advertisement for Carteret Concrete Co. with phone number 6-4859 and address Highway 70 W. Morehead City.

Advertisement for Gleen Interior Flat paint. Features include: Flattest finish ever, A film you can scrub, 1-coat hiding power, Superior performance, Costs less to use, Invisible touch-up, Odorless, fast-drying! World's finest quality at world's lowest cost per square foot!

Large advertisement for Seal-O-Matic Shingles. Features include: 'Worried about roof "blow off"... Come in and see the new Seal-O-Matic Shingles. These new Johns-Manville Shingles hold tight in high winds because they are self sealing! Here is the most important contribution to roofs for homes and farm buildings in the last 20 years... a roof of traditional shingle design that is self sealing. The sun's heat causes these amazing shingles to seal themselves down at the butt edge and grip the shingles underneath with bulldog tenacity... They defy even high winds to pry them loose. Seal-O-Matic Shingles are available in the popular Thick Butt style in many colors and blends. Stop in and let us demonstrate them to you. Ask for a free estimate. HIGHEST QUALITY — LOWEST PRICES HUNTLEY'S Highway 70 East Phone PA 8-4457 Beaufort, N. C.

Advertisement for Sears Catalog Sales Office. Phone PA 6-5181 815 Arendell St. Morehead City.

Advertisement for Safrit Lumber Co. Everything for building, remodeling. Phone PA 8-3848 Beaufort, N. C.